

UN Ebola Response Multi-Partner Trust Fund

18 November 2014

OBJECTIVE

The United Nations Secretary-General launched the United Nations System Response to the Ebola Outbreak to unite efforts of all concerned UN Entities and act as a platform for the global control of the Ebola Outbreak. The Strategic Objectives of the UN System Response to the Ebola Outbreak are: (1) Stop the outbreak; (2) Treat the infected; (3) Ensure essential services; (4) Preserve stability; and (5) Prevent outbreaks in countries currently unaffected.



© UNICEF

The UN Secretary-General has launched the **Ebola Response Multi-Partner Trust Fund**, which will ensure:

- a coherent UN System contribution to the overall Ebola outbreak response through a common financing mechanism;
- speedy, coordinated, and rapid UN action;
- mobilization of funding from Member States, regional legislative bodies, inter-governmental or nongovernmental organizations, businesses and individuals;
- a results-based management system to enable monitoring of the Fund's contribution to the Ebola response; and

- support for UN's efforts in establishing a global platform that facilitates the work of the other partners and stakeholders in the fulfillment of the Strategic Objectives.

GOVERNANCE STRUCTURE

The Steering Board will provide the Secretary-General with periodic feedback, guidance and expert advice on the use of Ebola Response MPTF and ensure strategic and programmatic coherence with other financing instruments. This Board is co-chaired by the Special Envoy on Ebola and the Director-General of WHO. The Steering Board members include the Special Representative of the Secretary General for UNMEER, one senior government representative of each affected country, Heads of the relevant UN Agencies' Funds and Programmes, representatives of International Financial Institutions, five top donors to the Ebola Response MPTF, Regional Organizations, and up to five NGOs. The Steering Board will meet every six months.

The Advisory Committee will provide guidance to the Special Envoy in the management of the UN Ebola MPTF. The Advisory Committee will also serve as a forum for discussing strategic issues and sharing information on funding coverage. The Advisory Committee will consist of the following members Special Envoy on Ebola (as a Chair), three representatives of contributing donors, three representatives of the affected countries (one from each affected country), and a representative at UNMEER (observer). Three UN Ebola Crisis Managers (one from each affected country) will serve as Resource Persons to the Advisory Committee. The MPTF Office will serve as ex-officio member of the Advisory Committee.

The Special Envoy on Ebola in consultation with the Advisory Committee will articulate the Ebola MPTF funding priorities, and make fund allocation decisions.

The Special Envoy will be supported by a **Fund Secretariat** that will provide the administrative support to the Advisory Committee; support the fund mobilization efforts led by the Special Envoy; organize calls for and appraisal of proposals; and monitor and report

on Fund's programmatic performance to the Advisory Committee.

The Ebola Response MPTF is designed to support and allocate resources to **Recipient Organizations** (UNMEER, UN Organizations and Departments, IOM and NGO Implementing Partners) in undertaking specific activities and functions, aligned with the Special Envoy on Ebola's five Strategic Objectives and 13 Mission Critical Actions

The Ebola Response MPTF is administered by the UNDP MPTF Office, acting as the **Administrative Agent**. The UNDP Multi-Partner Trust Fund Office is a UN Facility which administers over 100 UN common funding instruments (<http://mptf.undp.org>). The MPTF Office is responsible for Fund design and set-up, the maintenance of the Fund account, the receipt of donor contributions and the disbursement of funds upon instructions from the Special Envoy and provision of periodic consolidated reports.

FUND OPERATION

Proposals to support Mission Critical Actions, ranging from care for persons with Ebola to social mobilization and community engagement will be supported by the Fund. Operational procedures of the Ebola Response MPTF are streamlined to facilitate rapid fund allocation processes. The timeframe between Calls for Proposals and beginning of implementation will be maximum 7 days with every effort to shorten this period.

HOW TO CONTRIBUTE

Contributions to the Ebola Response MPTF may be accepted from Member States, regional legislative bodies, inter-governmental or nongovernmental organizations, businesses and individuals. In order to contribute to the Fund, the Standard Administrative Arrangement with the MPTF Office needs to be signed.

Contributors are encouraged to provide un-earmarked contributions. If due to specific donor preferences the un-earmarked contributions are not feasible, donors may earmark their contributions to a specific affected country or Strategic Objective of Ebola Response.

NEXT PAGE: GOVERNANCE STRUCTURE OF THE EBOLA RESPONSE MPTF & PROPOSAL DEVELOPMENT AND APPROVAL PROCESS

Contributors		Pledge
	Australia	\$8,755,000
	Azerbaijan	\$1,000,000
	Canada	\$3,568,879
	Chile	\$200,000
	China	\$6,000,000
	Colombia	\$100,000
	Denmark	\$5,000,000
	Estonia	\$50,826
	Finland	\$9,021,601
	Germany	\$6,300,000
	India	\$10,000,000
	Ireland	\$1,240,000
	Japan	\$5,940,000
	Kazakhstan	\$50,000
	Luxembourg	\$254,130
	Malta	\$62,000
	New Zealand	\$1,169,400
	Norway	\$2,290,000
	Philippines	\$2,000,000
	Romania	\$40,000
	Republic of Korea	\$5,000,000
	Sweden	\$14,000,000
	United Kingdom	\$32,467,532
	Venezuela	\$5,000,000
	Volvo	\$1,500,000
TOTAL:		\$121,009,368

CONTACTS

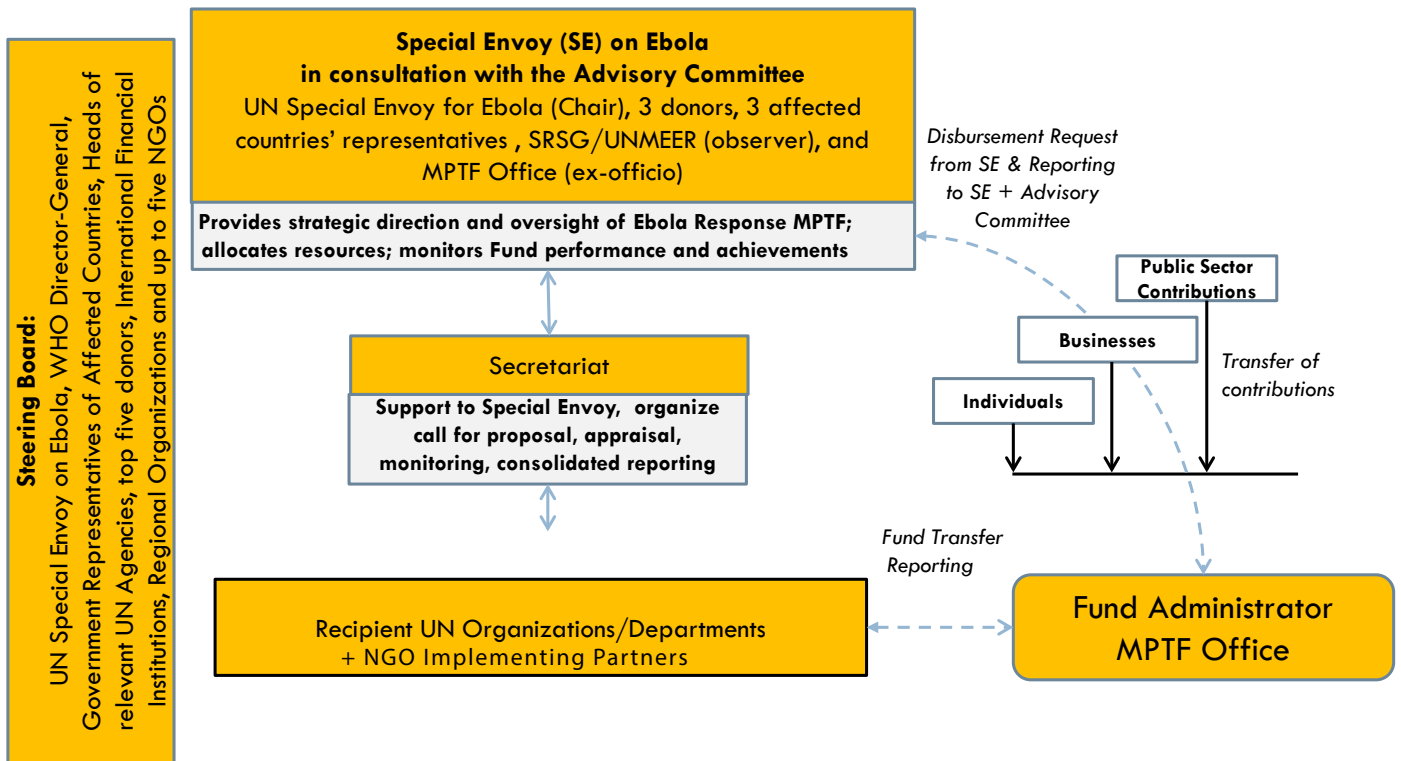
For Policy and Programme Issues:

Dr. David Nabarro, Special Envoy on Ebola
E-mail: david.nabarro@undp.org

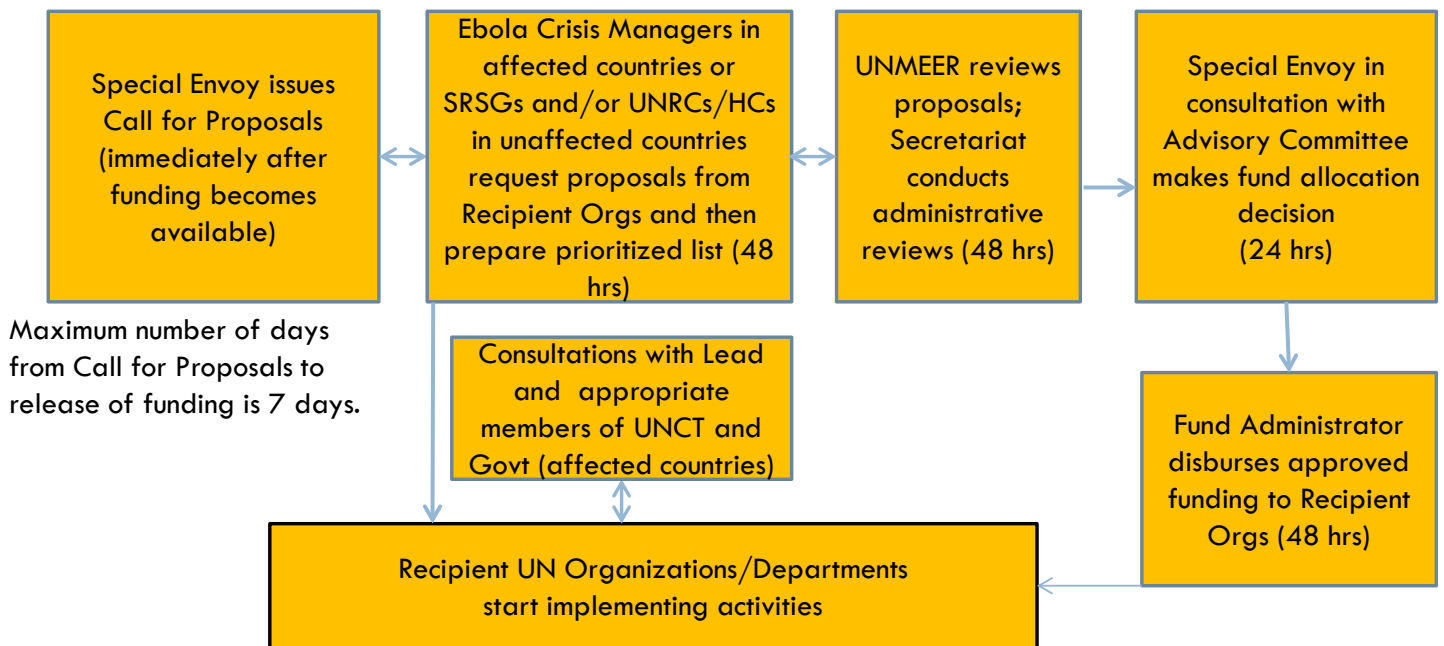
For Fund Administration Issues:

Multi-Partner Trust Fund Office (MPTF Office)
Mr. Yannick Glemarec, Executive Coordinator, Tel: +1 212 906 6880;
E-mail: yannick.glemarec@undp.org
Ms. Olga Aleshina, Senior Portfolio Manager, Tel: +1 212 906 6155;
E-mail: olga.aleshina@undp.org

GOVERNANCE STRUCTURE OF THE EBOLA RESPONSE MPTF



PROPOSAL DEVELOPMENT AND APPROVAL PROCESS



FUND TRANSFERS TO DATE: 17 NOVEMBER 2014

Strategic Objective: *SO2 TREAT the infected*

Mission Critical Action: *MCA03 - Care for Persons with Ebola and Infected Controls*

PROJECT	RUNOS	AMOUNT
Liberia Air Services - Provision of common logistics and transport services	WFP	\$4,000,000
Guinea Air Services - Provision of common logistics and transport services	WFP	\$4,000,000
Sierra Leone Air Services - Provision of common logistics and transport services	WFP	\$4,467,724
Sierra Leone Transport of Essential Items	WFP	\$11,052,470
Sierra Leone Establishment of Ebola Treatment Units	WFP	\$2,687,375
Sierra Leone Communication Equipment	WFP	\$167,547
TOTAL		\$26,583,116

For more information about the Ebola Response MPTF, visit the Ebola Response MPTF webpage at:

<http://mptf.undp.org/ebola>