



**UN Haiti Cholera Response Multi-Partner Trust Fund  
PROJECT MONTHLY PROGRESS REPORT  
Period: June - 2018**

<b>Project Number and Title:</b> Preventing and cutting cholera transmission in the West Department	<b>PROJECT START DATE<sup>1</sup>:</b> 30-march-2018	<b>AMOUNT ALLOCATED by MPTF</b> \$1,000,791.00  <b>Other Sources:</b> <ul style="list-style-type: none"> <li>Government of Japan \$2,600,000</li> <li>CERF LOAN \$8,000,000</li> <li>Government of Canada \$1,500,000</li> </ul> <b>Government Input:</b> National coordination salary	<b>RECIPIENT ORGANIZATION</b> UNICEF  <b>IMPLEMENTING PARTNER(S):</b>  <b>Haiti:</b> MSPP (Government) DINEPA (Government) ACF, ACTED, OXFAM, Solidarites International, IFRC, CRF (NGOs)  <b>West department:</b>  DSO: MoH departmental level (Government)  Solidarités International (NGO)																								
<b>Project ID:</b> 00109989 (Gateway ID)																											
<b>Project Focal Point:</b> Name: Samuel Jean Beaulieu E-mail: <a href="mailto:sjbeaulieu@unicef.org">sjbeaulieu@unicef.org</a> Telephone : (509) 4753 8082	<b>EXTENSION DATE:</b> n/a																										
<b>Proposal Location (Departments):</b> Haiti – West Department	<b>PROJECTED END DATE:</b> 29-march-2019	<table border="1"> <thead> <tr> <th colspan="5">Expenditures as 06/30/2018 (US \$)</th> </tr> <tr> <th>Global budget</th> <th>Indirect Support Costs (7%)</th> <th>Expenditures</th> <th>Committed funds</th> <th>Balance available</th> </tr> </thead> <tbody> <tr> <td align="right">1,000,791.00</td> <td align="right">27,075.29</td> <td align="right">386,769.88</td> <td align="right">207,812.00</td> <td align="right">379,133.83</td> </tr> </tbody> </table>		Expenditures as 06/30/2018 (US \$)					Global budget	Indirect Support Costs (7%)	Expenditures	Committed funds	Balance available	1,000,791.00	27,075.29	386,769.88	207,812.00	379,133.83									
Expenditures as 06/30/2018 (US \$)																											
Global budget	Indirect Support Costs (7%)	Expenditures	Committed funds	Balance available																							
1,000,791.00	27,075.29	386,769.88	207,812.00	379,133.83																							
<b>Strategic Objective TRACKS</b> <table border="1"> <tr> <td><input checked="" type="checkbox"/></td> <td><b>TRACK 1a:</b> Intensifying efforts to cut transmission of cholera and improve access to care and treatment</td> </tr> <tr> <td><input type="checkbox"/></td> <td><b>TRACK 1b:</b> Addressing the medium/longer term issues of water, sanitation and health systems</td> </tr> <tr> <td><input type="checkbox"/></td> <td><b>TRACK 2:</b> Assistance and Support</td> </tr> </table>		<input checked="" type="checkbox"/>	<b>TRACK 1a:</b> Intensifying efforts to cut transmission of cholera and improve access to care and treatment	<input type="checkbox"/>	<b>TRACK 1b:</b> Addressing the medium/longer term issues of water, sanitation and health systems	<input type="checkbox"/>	<b>TRACK 2:</b> Assistance and Support	<b>Beneficiaries:</b> Please, indicate the number of beneficiaries and provide disaggregated data, if available <table border="1"> <thead> <tr> <th colspan="2">No. of Beneficiaries</th> </tr> </thead> <tbody> <tr> <td>Communities</td> <td></td> </tr> <tr> <td><b>Total</b></td> <td></td> </tr> </tbody> </table> <table border="1"> <thead> <tr> <th colspan="2">No. of Beneficiaries</th> </tr> </thead> <tbody> <tr> <td><b>Women:</b></td> <td align="right">81,682</td> </tr> <tr> <td><b>Girls:</b></td> <td align="right">64,178</td> </tr> <tr> <td><b>Men:</b></td> <td align="right">78,478</td> </tr> <tr> <td><b>Boy:</b></td> <td align="right">61,662</td> </tr> <tr> <td><b>Total:</b></td> <td align="right"><b>286,000</b></td> </tr> </tbody> </table>		No. of Beneficiaries		Communities		<b>Total</b>		No. of Beneficiaries		<b>Women:</b>	81,682	<b>Girls:</b>	64,178	<b>Men:</b>	78,478	<b>Boy:</b>	61,662	<b>Total:</b>	<b>286,000</b>
<input checked="" type="checkbox"/>	<b>TRACK 1a:</b> Intensifying efforts to cut transmission of cholera and improve access to care and treatment																										
<input type="checkbox"/>	<b>TRACK 1b:</b> Addressing the medium/longer term issues of water, sanitation and health systems																										
<input type="checkbox"/>	<b>TRACK 2:</b> Assistance and Support																										
No. of Beneficiaries																											
Communities																											
<b>Total</b>																											
No. of Beneficiaries																											
<b>Women:</b>	81,682																										
<b>Girls:</b>	64,178																										
<b>Men:</b>	78,478																										
<b>Boy:</b>	61,662																										
<b>Total:</b>	<b>286,000</b>																										
<b>Epidemiological situation:</b>  <p>The epidemiological trend continues to show positive signs in the country despite an increase in the last two months with about 80-160 suspected cases being reported per week (including a mix of cholera and other acute watery diarrhoea cases) nationally and more recently in the West Department, with an increase in the number of suspected cholera cases notified during 2 weeks of June. However, this increase does not concern the agglomeration of Port au Prince but the city of Leogane and Cornillon. In the last week of June, the situation seems to be under control in the Department, and an overall decrease of incidence is currently being observed throughout the country. As of week 26 (June 30<sup>th</sup>), the total number of cases in the country was 2,609 compared to 7,626 for the same period in 2017.</p> <p>An active surveillance system was reinforced in addition to the existing surveillance system (West, Centre, Artibonite), the responses were strengthened and a “high profile operation” is being prepared to start between mid-July and early August with MSPP, UNICEF and partners to limit the risk of disease upsurge.</p>																											

<sup>1</sup> The date project funds were first transferred.



**UN Haiti Cholera Response Multi-Partner Trust Fund**  
**PROJECT MONTHLY PROGRESS REPORT**  
**Period: June - 2018**

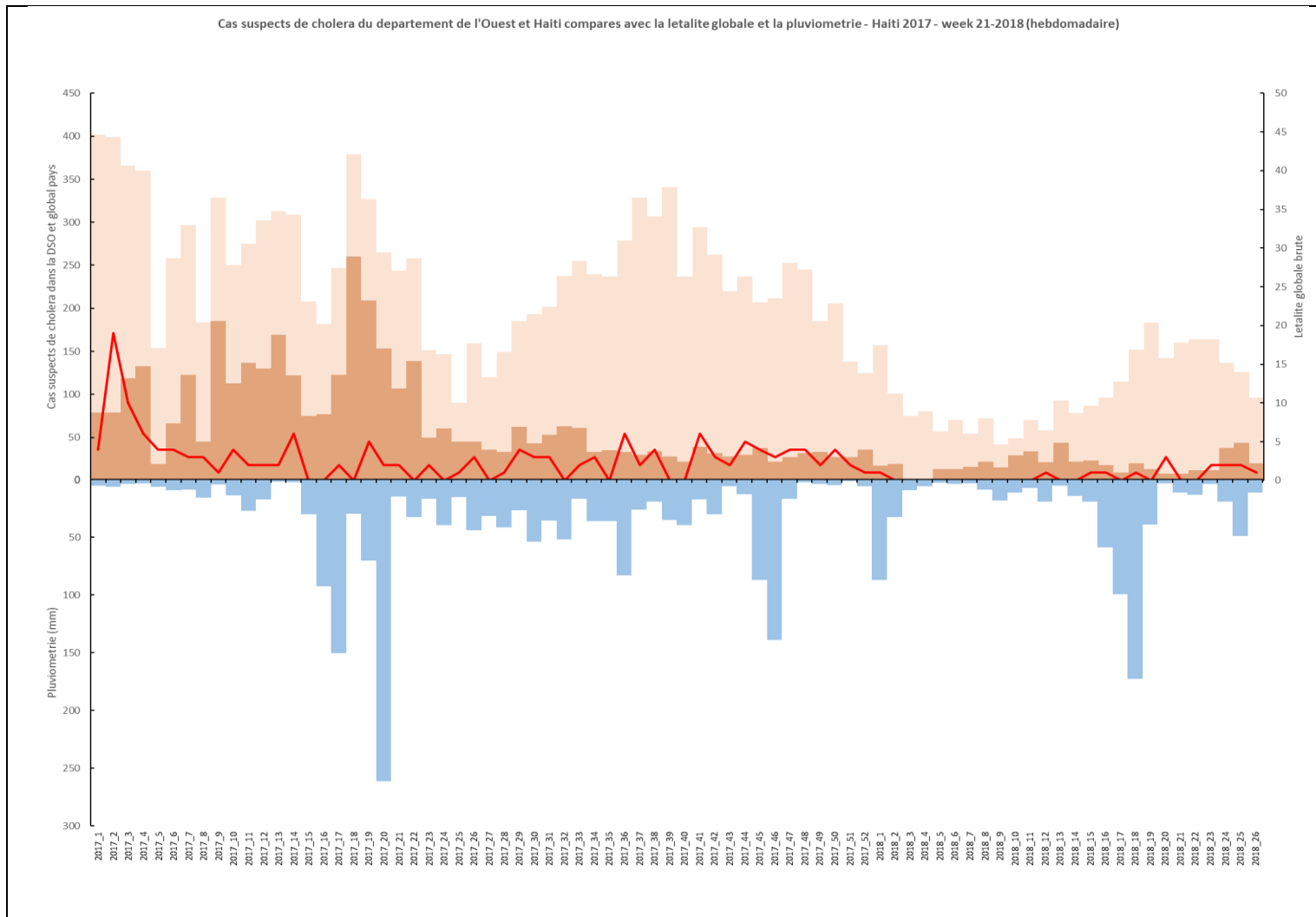


Figure 1: Cholera suspected cases in Haiti (light orange) and West department cholera cases (dark orange) compared with national fatality cholera cases (red curve) and rainfall (blue) - Haiti week 01 -2017 to week 26 – 2018. Data Sources: epidemiological: MSPP/DELIR; Rainfall: NASA

**Key achievements:**

**Strengthening surveillance and coordination**

UNICEF continues to support and participate in the national coordination at the national level, with PAHO and the World Bank.

A cholera officer still closely supports the West Department Health Directorate to ensure a strong daily surveillance and coordination. The very low incidence in this heavily populated department has been the result of both component since early 2017 and must be maintained considering the high vulnerability of many areas. Surveillance and coordination quick meetings still take place twice a week. UNICEF officer also supported MoH, DINEPA (National Directorate for Water and Sanitation) and partners to elaborate an emergency response plan in the event of a new upsurge of the disease.

UNICEF continues its support to the national cholera coordination cell of DINEPA. The cell is composed of two persons and assists the Regional DINEPA offices in increasing chlorination where needed.



**UN Haiti Cholera Response Multi-Partner Trust Fund  
PROJECT MONTHLY PROGRESS REPORT  
Period: June - 2018**

***Sustaining rapid response to alert***

Through its NGO partners (Solidarités International, ACTED), UNICEF supports 20 teams in the West Department. The MPTF contributes by allowing Solidarités International to maintain 15 teams active.

In May, with the increase in case in Artibonite, UNICEF asked Solidarités International to deploy three teams in this department to complement UNICEF partner ACF's teams. In June, only one team of Solidarités International remained in Artibonite in support of ACF.

Such mechanism allows for an efficient use of resources, increasing the number of teams in areas most affected.

Below a summary of UNICEF partners' activities at both national and in the West department since January 2018 to date:

**COMMUNITY RESPONSE AT A GLANCE – Summary of activities from January to end of June- Haiti DSO 2018**

	June	January 2018 to date
Suspected cases reported by MSPP	126	<b>490</b>
*Number of interventions by EMIRA & NGO's (rapid responses and preventions activities)	383	<b>3102</b>
Number of response done (rapid responses only)	185	<b>1961</b>
Responded cases by EMIRA & NGOs teams	225	<b>2237</b>
% of response < 48 h	97%	<b>97%</b>
% of responded cases (suspected and no suspected)	100%	<b>100%</b>
Number of joint responses EMIRA (MoH) + NGO	225	<b>3110</b>
% of joint responses	41%	<b>40%</b>
Average of households per response (i.e "cordon sanitaire" size)	16	<b>15,9</b>
Number of persons treated with chimioprophylaxy	1712	<b>12982</b>
Number of households having received at least one HWT product	3966	<b>31252</b>
Number of persons sensitized (rapid responses only)	11237	<b>87432</b>
Number of persons sensitized (rapid responses and prevention)	37678	<b>251015</b>
Number of disinfected houses	3886	<b>29325</b>
Average of disinfected houses per response	14.3	<b>15</b>
Number of emergency water chlorination points activated	12	<b>82</b>

*\* Rapid responses= one response for one cholera suspected case; \*Preventions activities= mobilization and sensitization activities but not attached directly to one suspected case*

***Linking emergency need to long-term capacity development***

A first mobile DINEPA team, mixed with Solidarites International staff, has been created as planned. Discussion with DINEPA at the central level took place during the first quarter of 2018 to define the role and hierarchical link of this team within DINEPA structure. The first missions of this mobile team took place in Croix des Bouquets, Carrefour, Port-au-Prince (West), Lascahobas, Belladeres and Saut d'Eau (Centre) from end of March to beginning of July 2018. The main objective of the WASH mobile response team is to ensure effective chlorination in all water systems located in affected areas. The two others teams are being created and shall be active beginning of the second semester 2018. The second team will be based in the Centre Region to respond to WASH / Cholera emergencies in the Center and North Region. The third team will be based in the West to solely focus on the West Department, most populated and historically cholera prone. The current team will then concentrate its focus on the West and South region.



**UN Haiti Cholera Response Multi-Partner Trust Fund  
PROJECT MONTHLY PROGRESS REPORT  
Period: June - 2018**

**MONTHLY PROGRESS REPORT RESULTS MATRIX**

**OUTPUT INDICATORS**

<b>Indicator</b>	<b>Geographic Area</b>	<b>Projected Target (as per results matrix)</b>	<b>Quantitative results for this current reporting period</b>	<b>Cumulative results since project commencement (quantitative)</b>	<b>Delivery Rate (cumulative % of projected total) as of date</b>
<i>Description of the quantifiable indicator as set out in the approved project proposal</i>					
# department where coordination of the alert-response is reinforced	West,	1	1	1	100%
# DINEPA staff supported within the National Cholera Coordination Cell	National	2	2	2	100%
# NGO teams supporting MSPP rapid response teams in Ouest	West,	12	12	12	100%
# joint mobile DINEPA-NGO teams activated	National	3	1	1	33%
# of deployment weeks in others department done by the joint teams	National EMO-EPAH	Depends on outbreaks	2	8	N/A
	Rapid response team (no EMO-EPAH)	Depends on outbreaks	4	7	N/A