

## KEY FINDINGS

- **88%** of household indicated that they are separated from family members, with schooling being the most cited reason.
- **88%** reported nuclear family living outside the PoC, and of those residing in displacement sites 60% were in Bentiu PoC and 29% in UN House PoC 3.
- **70%** of households in **Bentiu** and **57%** of households in **Rubkona** reported no perceived additional pressure on resources due to returning populations.
- Households in **Rubkona** town reported higher levels of inadequate infrastructure compared to **Bentiu town**.
- Sharing food distributions is the primary way host communities support IDPs and returnees.

## BACKGROUND

In September of 2018, DTM IOM South Sudan conducted a host community perception survey in **Bentiu** and **Rubkona** towns in Unity State. The purpose of this project was to better understand the potential for tension between the host community residing in the towns and returnees and IDPs, particularly as negotiations to reach a new peace agreement in the country were ongoing. Bentiu and Rubkona towns, as well as the PoC that was created in 2013, have borne the brunt of displacement during the ongoing crisis in Unity State. As a result, it becomes imperative to better understand and anticipate how stakeholders can adequately plan for services and programs.

There are significant differences in the estimated population of Bentiu and Rubkona towns. Additionally, the infrastructure and accessible institutions in each town present a contrast, particularly as Bentiu also hosts state government institutions. As a result, residents of Rubkona often travel to Bentiu to access services and institutions that are not available in their locality.

## METHODOLOGY AND SCOPE

A total of 546 households were surveyed, with **266** in **Bentiu** and **280** in **Rubkona**. Using the last available population statistics from 2008, the households surveyed met the minimum sample size to ascertain 90% confidence level with 5% margin of error.

## PERCEPTION OF RETURNING POPULATIONS

In both towns, households surveyed are seeing both returnees and IDPs moving to the area. For example, **71%** of households in **Bentiu** and **89%** in **Rubkona** reported a **perceived increase in returnees** coming home. Rate were higher for IDPs, as **76%** of **Bentiu** respondents and **91%** of **Rubkona** respondents reported that **IDPs were moving to their locality**.

## POPULATION DEMOGRAPHICS

The overwhelming majority of heads of households were female (90%), indicative of the burden that women take on during times of conflict in South Sudan, particularly as it is predominantly men that serve as actors in different armed factions.

## SEPARATED HOUSEHOLD MEMBERS

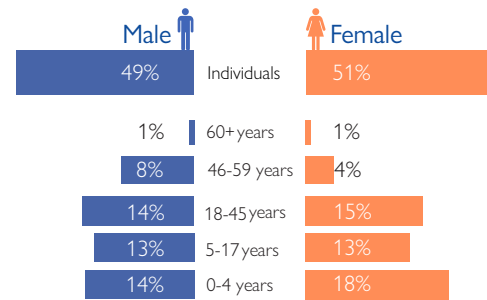
This fragmentation is also reflected in the fact that of the 293 households that responded to this question, 88% indicated that they had household members elsewhere, of which 88% were located in other parts of South Sudan. The primary reasons cited for separation of household members were schooling (43%), lack of safety (22%) and lack of financial means (20%).

## SOURCES OF INFORMATION

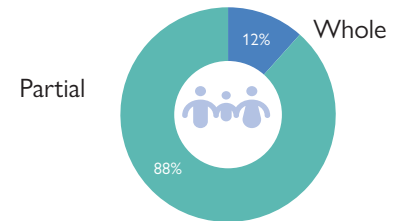
In **Bentiu Town**, public announcements (66%), phone communication (16%) and word of mouth (10%) were reported as the most common sources of information. In contrast, households in **Rubkona** reported radio (51%), public announcements (34%) and word of mouth (4%) as their most common sources of information.

Households were asked what type of information is important to them. In both towns, almost all respondents identified information about infrastructure as being important (99.6). In **Bentiu**, information about education (72%) and health facilities (50%) were also cited by households as being important. Parallel findings were observed in **Rubkona**, where 63 per cent of households reported information about education as important, and 59 per cent cited information about health facilities.

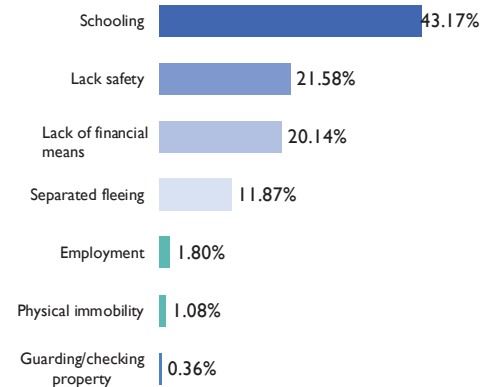
## POPULATION PROFILE



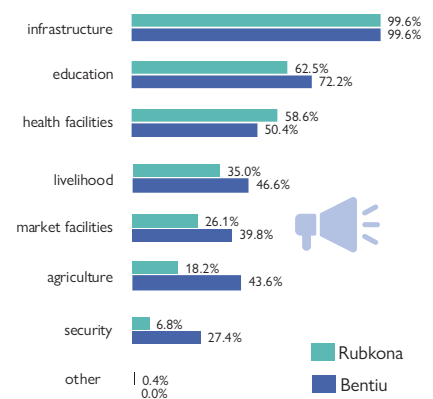
## WHOLE/PARTIAL HOUSEHOLD



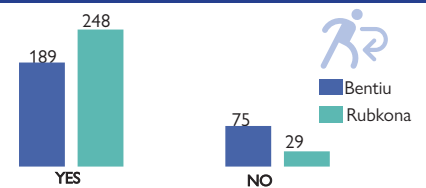
## REASONS FOR FAMILY SEPARATION



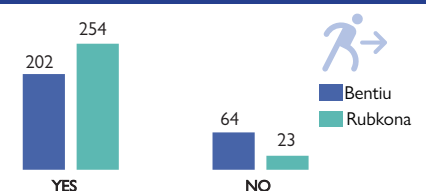
## TYPES OF INFORMATION IMPORTANT:



## MORE RETURNES COMING HOME

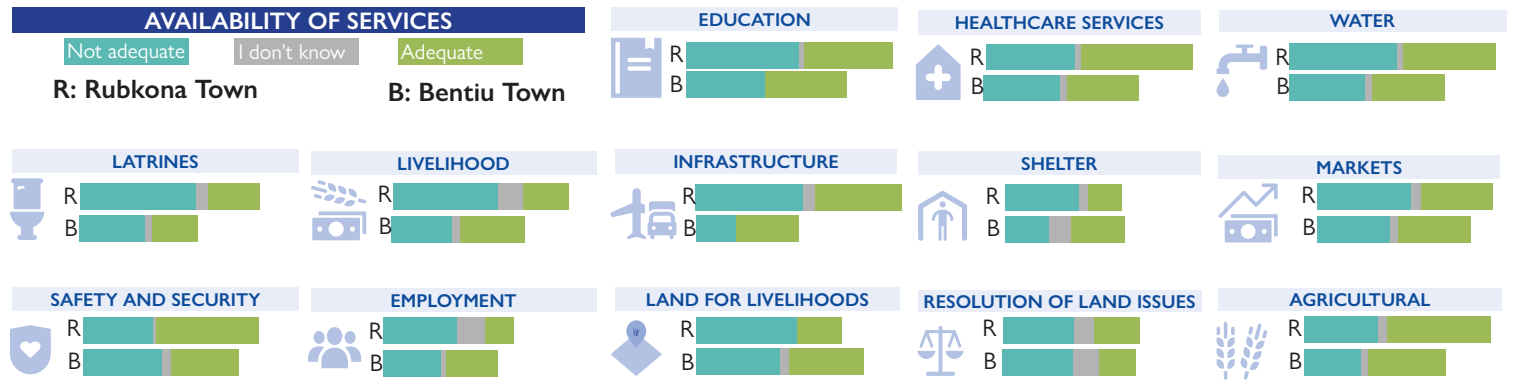


## PERCEIVE IDPS COMING HERE



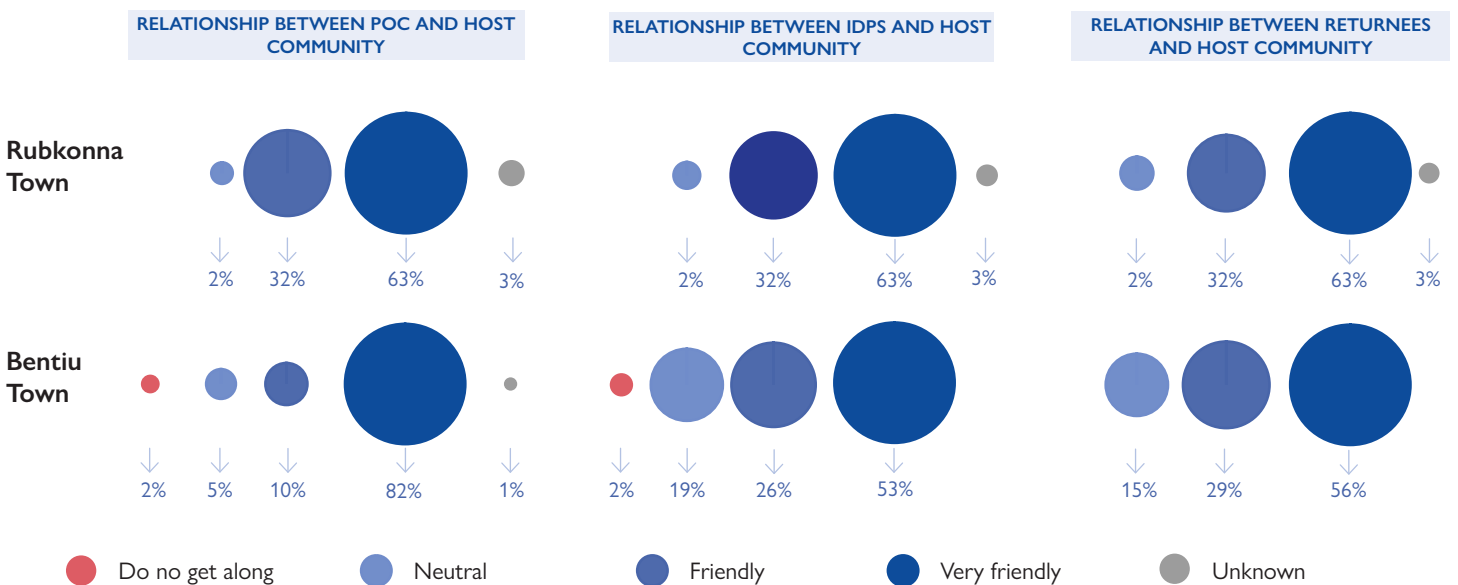
**INFRASTRUCTURE**

Households in each town were asked which facilities and services were available to them, and to what extent they were sufficient. For most services, **Rubkona town** reported a **higher level of “not adequate” services** that were operating in comparison to households in **Bentiu town**.



**RELATIONSHIP BETWEEN HOST COMMUNITIES AND IDPS AND RETURNEES**

The perception survey indicated that a significant majority of the residents of both towns expected more returnees (Bentiu 91%, Rubkona 96%) and IDPs (Bentiu 84%, Rubkona 94%) to settle in the towns in the future. For those that had already settled in the towns/host communities, the majority of households reported a “very friendly” (Bentiu 61%, Rubkona 53%) or “friendly” (Bentiu 33%, Rubkona 26%) perception towards IDPs, and “very friendly” (Bentiu 67%, Rubkona 56%) or “friendly” (Bentiu 27%, Rubkona 29%) for returnees. This was also supported in the towns’ perceptions of the relationship with the PoC, which was reported to be predominantly very friendly for both Bentiu (63%) and Rubkona (82%).



**SUPPORT TO IDPS AND RETURNEES**

Households reported that the host community actively supports both returnees and IDPs residing in the towns. For **Bentiu**, sharing food distributions (67% HHs) and providing food from home (71% HHs) were the two most cited methods of supporting IDPs. For **Rubkona**, sharing food distributions (84% HHs) and food from home (86%) were also the most cited reasons. Similar results were observed for host community support for returnees: in **Bentiu** food distribution (74% HHs) and sharing tools (76%) were most cited, and in **Rubkona** sharing food distributions (84%) and sharing tools (86%) were the most cited reasons. Security and water provision were listed as the interventions most required by households in both Bentiu (88%; 80%) and Rubkona (98%; 33%). In **Bentiu**, payam chiefs and administrators were listed as the primary local organizers of support, whereas in **Rubkona** the Relief and Rehabilitation Commission was listed as the primary organizers.

DTM IS SUPPORTED BY



For further information contact, DTM South Sudan at [southsudandtm@iom.int](mailto:southsudandtm@iom.int)