



PROGRESS REPORT

Reporting UN Organization	: United Nations Development Programme
Country	: Lebanon
Award ID	: 00057771
Project ID	: 00071490
Award Title	: Hydro Agricultural Development for Marjeyoun Area (Litani)
Award Timeframe	: Oct 2009– Oct 2011
Reporting Period	: 1 April 2010 to 30 June 2010

I. PURPOSE

Project Summary:

The project will assist local communities in Marjeyoun area to benefit from a main canal supplying water to South Lebanon from West Bekaa. The project will show the advantages and efficiency of modern irrigation techniques, will propose the new cropping patterns in the region, and will support the establishment of a very much needed Water Users Association. The project will have a direct impact on the livelihood of at least 1,250 households within 5 communities affected by the July 2006 conflict through extending the areas suitable for agriculture, and will provide direct assistance to the farmers in the area. The project will produce topo-cadastral maps which are the bases for designing the irrigation distribution networks, will establish a land classification database as a prerequisite for the development of the hydrant implementation plans, and will execute land reclamation for an area of 522 ha setting up the infrastructure for the water distribution network.

Project Objective:

The objective of this proposed pilot project is to prepare the infrastructure and to facilitate the implementation of the irrigation distribution network in the “Marjeyoun” North Perimeter through a participatory approach involving the farmers to ensure proper management of water use.

Project Linkages to National Priorities and Reconstruction Goals:

This project will be a model for the other areas which will benefit from Canal 800. It will set the infrastructure for the distribution network, will show the advantages and efficiency of modern irrigation techniques, will propose the new cropping patterns in the region with their socio-economic impact, and will support the establishment of a very much needed Water Users Association. The project will have a direct impact on the livelihood of the local communities affected by the July 2006 conflict through extending the areas suitable for agriculture and will provide direct assistance to the farmers through providing them with wheat seeds to be cultivated on their lands for two consecutive years (other field crops will be considered as well), awaiting the supply of irrigation water from the main canal.

The project is in line with the Millennium Development Goals, namely goal 7 - Ensure Environmental Sustainability. It works towards the target of proportioning total water resources used in each country. It further meets national priorities on water resource management of the Ministry of Energy and Water and is in line with the water reform programme set by the Lebanese Government.

Project Implementation Partners:

- Litani River Authority
- Council for Development and Reconstruction
- Communities of “Burghoz”, “Blat”, “Dibbine”, “Ibl Essaki”, and “Jdaydit Marjeyoun”.
- Association of the Friends of Ibrahim Abd El Al (AFIAL)

Key Coordination:

- Ministry of Agriculture (MoA) – Green Plan (GP)
- Ministry of Energy and Water (MoE&W)
- Ministry of the Environment (MoE)

Acronyms:

- | | |
|---|---------|
| - Litani River Authority | ≡ LRA |
| - Council for Development and Reconstruction | ≡ CDR |
| - Association of the Friends of Ibrahim Abd El Al | ≡ AFIAL |
| - Ministry of Agriculture | ≡ MoA |
| - Green Plan | ≡ GP |
| - Ministry of Energy and Water | ≡ MoE&W |
| - Ministry of the Environment | ≡ MoE |
| - Lebanon Mine Action Center | ≡ LMAC |
| - United Nations Mine Action Center | ≡ UNMAC |

II. RESOURCES

	Amount (USD)
Total budget approved :	2,000,000
Total disbursements as for 30 June 2010 :	77,450
Commitments for next quarter :	100,000
Available Balance :	1,922,550

Budget and Expenditure Breakdown per LRF Category:

CATEGORY	Total Budget(USD)	Total Exp. to date (USD)
1. Personnel (Incl. staff and consultants)	232,200	43,200
2. Contracts (Incl. companies, professional services)	1,416,959	27,000
3. Training (incl. AV printing / production)	30,000	0
4. Transport (local)	15,000	1,200
5. Supplies and commodities (Incl. IT equipment and rental & maintenance)	100,000	500
6. Equipment (including installation)	40,000	0
7. Travel	15,000	0
8. Miscellaneous	20,000	500
9. Agency Management Support (7%)	130,841	5,050
TOTAL	2,000,000	77,450

III. PROGRESS

- **Stakeholder Analysis and Survey:**

The project team conducted a stakeholder survey for the five villages in the area of the project in order to finalize the stakeholder analysis. Workshops were prepared for each of the five villages introducing the project and its main activities. In addition, the presentations tackled the topic of the Water Users Association which will be established by AFIAL.

- **Production of Land Use Map:**

Available land use/cover map (1998) was updated to reflect year 2009 status using GeoEye-1 satellite images for the area of the project.

Field visits were undertaken in the study area to collect information and interpretation keys for image interpretation. In addition, field checking (97 field sites) was carried out to test the accuracy of image interpretation at selected sites and to clarify interpretation assumptions. These sites were located using GPS with a precision of 10 m. They have been chosen by a random stratified sampling to cover all obtained land use/cover class. The established confusion matrix between the delineated land use/cover on the GeoEye imageries and those verified in the field indicated a high overall accuracy of 93%.

- **Acquiring Cadastral Maps:**

The project managed to acquire a list of all land owners in the five villages covered by the project (around twelve thousand cadastral records). These will be used to identify the agricultural lands at the preliminary phase of the project, and then will be consolidated with data from the stakeholders on the ground. A letter was also submitted to the directorate of cadastre and restate in order to obtain the cadastral maps for the villages targeted by the project; the reply was that only paper maps will be supplied and the project will have to scan and digitize them in order to have the soft copy which will be needed for the upcoming phases of implementation.

- **Preparing the Draft Legislation for the WUAs**

Several meetings were held with the legislator preparing the draft law for the Water Users Associations. The general definitions were explained such as the stakeholders, the irrigation water, irrigated lands, the geographical frame, etc. in addition to the legal procedures for the establishment of the WUAs internal law and membership, as well as the registration fees, tariffs and enforcement. The draft law, once finalized, will be submitted to the parliament and AFIAL will undertake the lobbying efforts to disseminate the concept and pass the law.

- **Preparing Draft ToR for the Land Classification:**

A draft ToR is being prepared for the recruitment of the expert to conduct the land classification whereby any available data at the national level will be collected and consolidated for around 745 ha. The classification parameters should include geology, terrain slopes, soil description, in-depth percentage of stones and gravels. From the soil description parameters, a soil series classification has to be done. This series classification must be supported by physical laboratory analysis (Coarse and fine sand, silt and clay); chemical parameter analysis (Nitrogen, Potassium, Phosphate, Calcium, Magnesium, Iron, etc.)

- **Recruitment of Project Personnel:**

The Administrative Assistant joined the team at the beginning of May 2010; in addition a UNV site engineer has also been recruited for 4 months to conduct the initial assessment on the ground. Also, GIS Graduates will be recruited to assist in the Digitization of the Cadastral Maps once they are received from the directorate of cadastre and restate

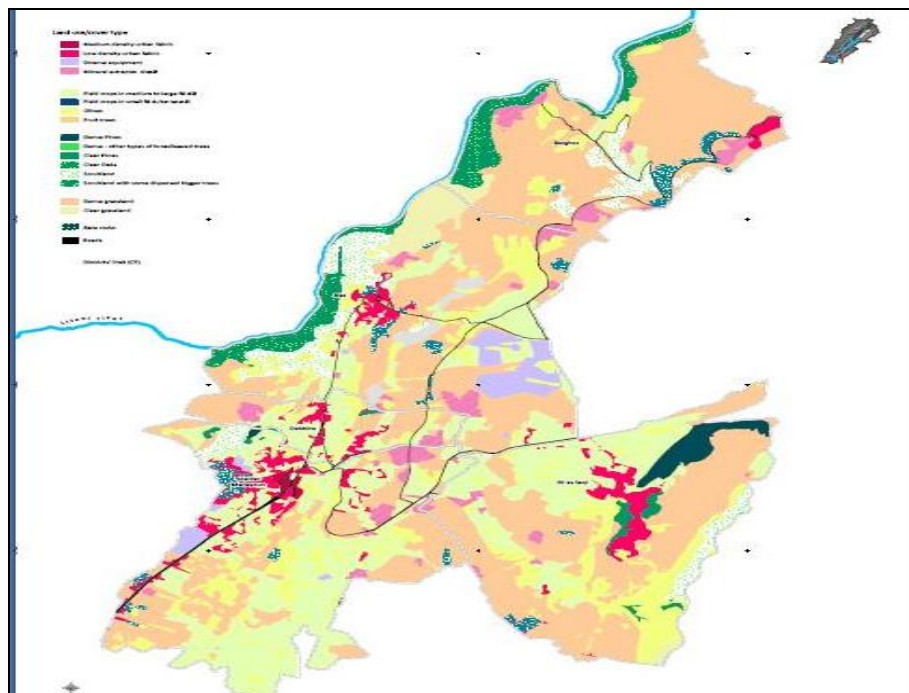
Activity Results	Activity Actions	Progress up to 30 June 2010	Targets for 2010
1 Establishment of Water Users Association (WUA)	1.1 Draft the required legislation to establish the WUA Financial Management; 1.2 Lobby with policy makers to pass the required legislation	✓ Many meetings with the legislator drafting the WUA law ✓ Stakeholder Analysis	✓ Capacity building trainings; ✓ Review of existing legislation related to WUA
2 Development of land database and hydrant plans	2.1 Processing of topo-cadastral maps, using GIS; 2.2 Conduct physical & chemical laboratory analysis for soil and infiltration measurements (every 4 ha); 2.3 Obtain data on the geology, slopes, percentage and nature of rocks, stones and gravel on surface, and current land use for the project area; 2.4 Determine cropping pattern and water needs at farm level; 2.5 Finalise the hydrant plans	✓ Collection of necessary information has started ✓ Production of updated land cover/use map ✓ Acquiring lists of cadastral records for the area ✓ Preparing ToR for land classification	✓ Collection and consolidation of land classification information for the region; ✓ Development of the topo-cadastral maps;
3 Execution of land reclamation works	3.1 Develop guideline basis for land reclamation works; 3.2 Prepare land reclamation designs for uniform geographical region 3.3 Execution of the base works; 3.4 Support complementary works (Terraces, walls, stone and gravel removal) to be done by farmers; 3.5 Provide the farmers with wheat seeds for cultivating their land	✓ This activity has not been initiated yet	✓ Initiation of the design of the reclamation programme; ✓ Selection of contractor for execution of land reclamation
4 Project Management	4.1 Establish PMU; 4.2 Establish coordination and linkages between all project partners; 4.3 Ensure timely implementation and reporting on project activities	✓ Recruitment of Project Assistant ✓ Advertising for a UNV site engineer	✓ Recruitment of the remaining team members; ✓ Timely reporting on all project activities

IV. WORK PLAN PER ACTIVITY FOR THE THIRD QUARTER IN 2010 (July - September 2010).

Key Milestones Wks	July				August				September			
	1	2	3	4	1	2	3	4	1	2	3	4
1. Establishment of Water Users Associations												
1.1 Data Collection												
1.2 Identification of Stakeholders												
1.3 Legislation Review												
1.4 Capacity building Trainings												
2. Development of Land Database & Hydrant Plans												
2.1 Collection and consolidation of land classification information for the region												
2.2 Finalizing ToRs for the Production of topo-cadastral maps												
3. Execution of Land Reclamation Works												
3.1 Initiation of the design of the reclamation programme;												
4. Project Management												
4.1 Recruitment of the site engineer												
4.2 Technical, Financial and operational mgt.												
4.3 Promotion of synergies with other projects												
4.4 Information exchange and coordination												

Implementation Constraints and Lessons Learnt during this Quarter:

- ➔ The project experienced some delays to be initiated which may result in the need to extend the project end date. Should this be necessary, an official request for extension will be formally submitted to the LRF Steering Committee.
- ➔ Political and security situation south of the *Blue Line*: The project is relying more on national rather than international staff.
- ➔ Presence of cluster bombs and explosive remnants of war: The project is coordinating with the Lebanon Mine Action Center (LMAC) and the United Nations Mine Action Center (UNMAC) in that regard.



Updated Land Cover/Use Map 2010 for the Project Area