

**JOINT PROGRAMME MONITORING REPORT:**  
**ECONOMIC GOVERNANCE WINDOW**

This report is due no more than 20 days following the end of the 2<sup>nd</sup> and 4<sup>th</sup> quarter. Please submit to the MDF-G Secretariat at: [mdgf.secretariat@undp.org](mailto:mdgf.secretariat@undp.org)

**Section 1: Identification and Joint Programme Status**

**a. Joint Programme Identification and basic data**

|   |  |
|---|--|
| <p><b>Date of Submission:</b> 29 July 2010<br/> <b>Submitted by:</b><br/>         Name: Kathleen P. Mangune<br/>         Title: Chief Economic Development Specialist<br/>         Organization: National Economic and Development Authority<br/>         Contact information:<br/>         Email: KPMangune@neda.gov.ph<br/>         Tel.: +632-631-3724<br/>         Fax: +632-631-2188</p> | <p><b>Country and Thematic Window</b><br/> <i>Philippines</i><br/> <i>Democratic Economic Governance</i></p>   |
| <p><b>MDTF Atlas Project No:</b> 00050712<br/> <b>Title:</b><br/> <i>MDG-F 1919: Enhancing Access to and Provision of Water Services with the Active Participation of the Poor</i></p>  | <p><b>Report Number:</b> 2<br/> <b>Reporting Period:</b> January – June 2010<br/> <b>Programme Duration:</b> 02 June 2009 – 01 June 2012</p>   |
| <p><b>Participating UN Organizations</b></p> <ol style="list-style-type: none"> <li>1. <i>United Nations Development Programme (UNDP)</i></li> <li>2. <i>United Nations Children's Fund (UNICEF)</i></li> </ol>   | <p><b>Implementing partners<sup>1</sup></b></p> <ol style="list-style-type: none"> <li>1. <i>National Economic and Development Authority (NEDA)</i></li> <li>2. <i>Department of the Interior and Local Government (DILG)</i></li> <li>3. <i>National Water Resources Board (NWRB) as Responsible Party</i></li> </ol> |

<sup>1</sup>Please list all the partners actually working in the joint's programme implementation, NGOs, Universities, etc. If you are working with a large number of partners please annex the list.

| <b>Estimated Budget Summary</b>   |   |
|---|---|
| <b>Total Approved Joint Programme Budget:</b><br><i>US\$ 5.37 Million</i> | UNDP: <i>US\$ 3.81 Million</i><br>UNICEF: <i>US\$ 1.56 Million</i><br>Total: <i>US\$ 5.37 Million</i> |
| <b>Total Amount of Transferred to date:</b>                               | UNDP: <i>US\$ 1,307,540<sup>2</sup></i><br>UNICEF: <i>US\$ 749,535</i><br>Total: <i>US\$2,057,075</i> |
| <b>Estimated Total Budget Committed<sup>3</sup> to date:</b>              | UNDP: <i>US\$ 1,015,742</i><br>UNICEF: <i>US\$ 566,577</i><br>Total: <i>US\$1,582,319</i>             |
| <b>Estimated Total Budget Disbursed<sup>4</sup> to date:</b>              | UNDP: <i>US\$ 733,890</i><br>UNICEF: <i>US\$ 187,520</i><br>Total: <i>US\$921,410</i>                 |

---

<sup>2</sup>Including US\$20,000 Formulation Advances

<sup>3</sup>Based on an exchange rate of US\$1.00:PhP46.70

<sup>4</sup>Based on an exchange rate of US\$1.00:PhP46.70

## Beneficiaries

### Direct Beneficiaries

| Indicate Beneficiary type<br>(i.e. farmers, policy makers, SMEs, etc.) | No. Institutions | No. Women  | No. Men | No. Ethnic Groups |
|--|------------------|--|---------|-------------------|
| Central Government   | 3                | 49   | 58      |                   |
| Local Government   | 36               | To be validated/determined thru the on-going baseline survey among JP covered regions. |         |                   |
| Water Service Providers  | 36               | To be validated/determined thru the on-going baseline survey among JP covered regions. |         |                   |
|  |                  |  |         |                   |
| <b>Total</b>   | 39               |  |         |                   |

### Indirect Beneficiaries

| Indicate Beneficiary type<br>(i.e. farmers, policy makers, SMEs, etc.) | No. Institutions | No. Women | No. Men | No. Ethnic Groups              |
|--|------------------|-----------|---------|--------------------------------|
| Villagers <sup>5</sup>   |                  | 363,804   | 368,196 | To be validated/<br>determined |
|  |                  |           |         |                                |
|  |                  |           |         |                                |
| <b>Total</b>   |                  | 363,804   | 368,196 |                                |

---

<sup>5</sup>Based on estimated 122,000 households to be served by 36 beneficiary local water service providers, with an assumed 6 persons per household, and gender disaggregation based on 2000 census.

## MDG-F Monitoring Report

### **b. Joint Programme M&E framework**

| <b>Expected Results (Outcomes &amp; outputs)</b>   | <b>Indicators (with baselines &amp; indicative timeframe)</b>  | <b>Means of verification</b>  | <b>Collection methods (with indicative time frame &amp; frequency)</b>  | <b>Responsibilities</b>  | <b>Risks &amp; assumptions</b>   |
|--|--|---|---|--|--|
| Output 1.1 Incentives mechanisms and partnership modalities (e.g., leveraging local capital and/or subsidy) developed and enhanced for investments in “waterless” and poor communities.                          | <b>Indicators:</b> 1 policy issuance promoting the use of the schemes by 2011<br><br><b>Baseline:</b> No other policy issuance except NG-LGU cost-sharing arrangement          | Compendium/compilation of policy issuances issued by government<br><br>Progress/Annual Reports  | Research/Data collection (Feb-Apr 2011)<br><br>Regular M&E and Reporting (Quarterly/Annual)<br><br>Final evaluation report  | NEDA:<br>- Prepare TOR and procure/hire experts<br>- Provide technical counterpart to experts<br>- Assist experts in coordinating with relevant government agencies and in accessing data/information<br>- Review of deliverables<br>- Participate in actual M&E | <b>National and local elections posed difficulties in the conduct of local activities.</b><br><br><b>Low political commitment at national &amp; local levels, arising from change in administration, may delay project implementation.</b> |
| Output 1.2.1 Policy on National Government-Local Government Units (NG-LGU) cost sharing arrangement for water supply and sanitation provision for poor municipalities reformulated and recommended for adoption. | <b>Indicator(s):</b> 1policy issuance recommended for cost sharing arrangement by 2011<br><br><b>Baseline:</b> Current cost sharing arrangement based on LGU income class only | Compendium/compilation of executive issuances issued by government<br><br>Inventory/Models of NGA-LGU cost sharing arrangements.<br><br>Progress/Annual Reports | Research/Data collection (Jan-Mar 2011)<br><br>Research/Data collection (Jan-Mar 2011)<br><br>Regular M&E and Reporting (Quarterly/Annual)<br><br>Final evaluation report     | UNICEF:<br>- Review of deliverables<br>- Conduct of actual M&E<br>Other Partners (UNDP, DILG, NWRB):<br>- Review of deliverables<br>- Conduct of/participate in actual M&E   | <b>Conflicting national and local laws and policies.</b><br><br><b>Weak capacity of NGAs and LGUs to implement projects.</b><br><br><b>Lack of support from the private sector.</b>  |
| Output 1.2.2 Programming policies of the P3W reviewed and amended, and recommended for adoption.   | <b>Indicator(s):</b> 1set of guidelines for programming recommended for adoption by 2010<br><br><b>Baseline:</b> Current implementing guidelines available                     | Progress/Annual Reports   | Research/Data collection (July-Sept 2010)<br><br>Research/Data collection (July-Sept 2010)<br><br>Regular M&E and Reporting (Quarterly/Annual)<br><br>Final evaluation report |  |  |

## MDG-F Monitoring Report

|  |  |   |  |  |  |
|--|--|---|--|--|--|
| <p><b>Output 1.3</b><br/>WATSAN Councils and Water user associations formed/organized with increased participation of women.</p> | <p><b>Indicator(s):</b>36 WATSAN councils &amp; water user association organized</p> <p><b>Baseline:</b>No WATSAN Councils were organized during the implementation of the P3W</p> | <p>Government Reports (NWRB/LWUA/LGU)</p> <p>2010 Baseline Survey Results/Progress/Annual Reports/Field Visit Reports</p> | <p>Research/Data Collection (Jan-Dec 2010)</p> <p>Regular M&amp;E and Reporting (Quarterly/Annual)</p> | <p>DILG:</p> <ul style="list-style-type: none"> <li>- Prepare TOR</li> <li>- Facilitate the creation of WATSAN councils through issuance of EOs</li> <li>- Assist NGOs, Academe in the formation of users association</li> <li>- Review deliverables of experts</li> <li>- Validate results of the baseline survey</li> <li>- Coordinates with LGUs in all related activities</li> </ul> <p>UNDP:</p> <ul style="list-style-type: none"> <li>- Conduct of actual M&amp;E</li> <li>- Provide overall guidance</li> </ul> <p>LGUs:</p> <ul style="list-style-type: none"> <li>- Submit/validate data</li> </ul> <p>Other Partners (UNICEF, NEDA, NWRB):</p> <ul style="list-style-type: none"> <li>- Review of deliverables</li> <li>- Conduct of/participate in actual M&amp;E</li> </ul> | <p><b>National and local elections posed difficulties in the conduct of local activities.</b></p> <p><b>Low political commitment at national &amp; local levels, arising from change in administration, may delay project implementation.</b></p> <p><b>Conflicting national and local laws and policies.</b></p> <p><b>Weak capacity of NGAs and LGUs to implement projects.</b></p> <p><b>Lack of support from the private sector.</b></p> |
| <p><b>Output 1.4</b><br/>Tariff-setting methodology adjusted for small scale water service providers.</p>                        | <p><b>Indicator(s):</b> 1 tariff-setting methodology revised and recommended for adoption</p> <p><b>Baseline:</b> Current 5-year tariff-setting methodology available</p>          | <p>Progress/Annual Reports</p>  | <p>Research/Data collection (July-Sept 2010)</p>   | <p>NEDA:</p> <ul style="list-style-type: none"> <li>- Prepare TOR and hire experts</li> <li>- Provide technical counterpart</li> <li>- Assist experts in coordinating with relevant government agencies and in accessing data/information</li> <li>- Review of deliverables</li> <li>- Participate in actual M&amp;E</li> </ul> <p>UNICEF:</p> <ul style="list-style-type: none"> <li>- Review of deliverables</li> <li>- Conduct of actual M&amp;E</li> </ul> <p>Other Partners:</p> <ul style="list-style-type: none"> <li>- Review of deliverables</li> <li>- Conduct of/participate in actual M&amp;E</li> </ul>   |  |

## MDG-F Monitoring Report

|   |   |   |   |  |  |
|---|---|---|---|--|--|
| <p><b>Output 2.1.1</b><br/>Mentoring mechanisms formulated, recommended for adoption and institutionalized.</p> | <p><b>Indicator(s):</b> at least 1 module for mentoring formulated</p> <p><b>Baseline:</b> No available guidelines/modules.</p>   | <p>Capacity building &amp; M/E Modules</p> <p>Progress/Annual Reports/Knowledge Products</p>  | <p>Research/Data Collection/Module Development/Training Roll-out (Jan 2010 –June 2011)</p> <p>Regular M&amp;E and Reporting (Quarterly/Annual)</p>  | <p>NEDA:</p> <ul style="list-style-type: none"> <li>- Prepare TOR and hire experts for assessment</li> <li>- Provide technical counterpart</li> <li>- Assist experts in coordinating with relevant government agencies and in accessing data/information</li> <li>- Review of deliverables</li> <li>- Participate in actual M&amp;E</li> </ul> <p>DILG:</p> <ul style="list-style-type: none"> <li>- Prepare TOR for capacity assessment and formulation of modules</li> <li>- Review deliverables/outputs</li> <li>- Coordinate with LGUs, WSPs and LWUA</li> <li>- Submit report to relevant partners</li> </ul> <p>UNDP and UNICEF:</p> <ul style="list-style-type: none"> <li>- Review of deliverables</li> <li>- Conduct of actual M&amp;E</li> </ul> <p>Other Partners (e.g., NWRB):</p> <ul style="list-style-type: none"> <li>- Review of deliverables</li> <li>- Participate in actual M&amp;E</li> </ul> <p>WSPs:</p> <ul style="list-style-type: none"> <li>- Submit/validate data</li> </ul> | <p><b>National and local elections posed difficulties in the conduct of local activities.</b></p> <p><b>Low political commitment at national &amp; local levels, arising from change in administration, may delay project implementation.</b></p> <p><b>Conflicting national and local laws and policies.</b></p> <p><b>Weak capacity of NGAs and LGUs to implement projects.</b></p> <p><b>Lack of support from the private sector.</b></p> |
| <p><b>Output 2.1.2</b> WATSAN Toolbox implemented.</p>  | <p><b>Indicator(s):</b> 36 LGUs trained in planning and management/financing; 36 user associations trained in operations &amp; management of water facilities; 36 WSPs trained in efficient/effective service delivery</p> <p><b>Baseline:</b> Toolbox available;<br/>Data on current level of competency for planning, operations &amp; management to be</p> | <p>Capacity building &amp; M/E Modules/ WATSAN Tools/Manuals</p> <p>LGU Development Plans</p> <p>Progress/Annual Reports/Field Visit Reports/Knowledge Products</p> | <p>Research/Data Collection/Module Development/Training Roll-out (June 2010 –June 2011)</p> <p>Research/Data Collection (June 2010- June 2011)</p> <p>Regular M&amp;E and Reporting (Quarterly/Annual)</p> <p>Capacity Assessment (pre and post assessment of competencies level)</p> | <p>DILG:</p> <ul style="list-style-type: none"> <li>- Prepare TOR</li> <li>- Collect/compile/ consolidate monitoring data</li> <li>- Coordinate with LGUs</li> <li>- Review deliverables of experts</li> <li>- Submit report to relevant partners</li> <li>- Assist experts develop the framework on Capacity Assessment as input to the WATSAN Toolbox</li> <li>- Participate in actual M&amp;E</li> </ul> <p>UNDP:</p> <ul style="list-style-type: none"> <li>- Review of deliverables</li> </ul>  |  |

## MDG-F Monitoring Report

|   |   |  |   |  |   |
|---|---|--|---|--|---|
|   | determined thru the on-going capacity assessment  |  |   | <ul style="list-style-type: none"> <li>- Conduct of actual M&amp;E Other Partners (e.g., UNICEF, NEDA, NWRB)</li> <li>- Review of deliverables</li> <li>- Conduct of/participate in actual M&amp;E</li> </ul>  | <p><b>National and local elections posed difficulties in the conduct of local activities.</b></p> <p><b>Low political commitment at national &amp; local levels, arising from change in administration, may delay project implementation.</b></p> |
| <p><b>Output 2.2</b><br/>Improved sector plans formulated and monitoring mechanisms established.</p>                            | <p><b>Indicator:</b>36 MW4SPs formulated; 36 monitoring systems established</p> <p><b>Baseline:</b> No MW4SPs and monitoring systems in 36 target municipalities</p>              | <p>Government Reports (DILG/NWRB/LWUA/LGU)</p> <p>LGU Development Plans</p> <p>Progress/Annual Reports/Field Visit Reports</p> | <p>Research/Data Collection (June 2010- June 2011)</p> <p>Research/Data Collection (June 2010- June 2011)</p> <p>Regular M&amp;E and Reporting (Quarterly/Annual)</p> | <p>DILG:</p> <ul style="list-style-type: none"> <li>- Prepare TOR</li> <li>- Review deliverables/ outputs of contracted firm</li> <li>- Coordinate with LGUs</li> <li>- Submit report to relevant partners</li> <li>- Participate in actual M&amp;E</li> </ul> <p>UNDP:</p> <ul style="list-style-type: none"> <li>- Review of deliverables</li> <li>- Conduct of actual M&amp;E</li> </ul> <p>Other Partners (e.g., UNICEF, NEDA, NWRB)</p> <ul style="list-style-type: none"> <li>- Review of deliverables</li> <li>- Conduct of/participate in actual M&amp;E</li> </ul>  | <p><b>Conflicting national and local laws and policies.</b></p> <p><b>Weak capacity of NGAs and LGUs to implement projects.</b></p> <p><b>Lack of support from the private sector.</b></p>  |
| <p><b>Output 2.3</b><br/>Localized Customer Service Code based on the framework for service delivery developed and adopted.</p> | <p><b>Indicator(s):</b>36 localized customer service codes based on manual/ guidelines developed</p> <p><b>Baseline:</b>Only Customer Service Code for Level III is available</p> | <p>Progress/Annual Reports/ Field Visit Reports</p> <p>HH Surveys</p>  | <p>Regular M&amp;E and Reporting (Quarterly/Annual)</p> <p>Research/Data Collection (Apr 2009)</p>  | <p>DILG:</p> <ul style="list-style-type: none"> <li>- Review deliverables</li> <li>- Coordinate with LGUs and WSPs</li> <li>- Submit report to relevant partners</li> <li>- Participate in actual M&amp;E</li> </ul> <p>NWRB:</p> <ul style="list-style-type: none"> <li>- Prepare TOR</li> <li>- Review of deliverables</li> <li>- Participate in actual M&amp;E</li> </ul> <p>UNDP:</p> <ul style="list-style-type: none"> <li>- Review of deliverables</li> <li>- Conduct of actual M&amp;E</li> </ul> <p>WSPs:</p> <ul style="list-style-type: none"> <li>- Submit/validate data</li> </ul> <p>Other Partners (e.g., UNICEF, NEDA)</p> |   |

## MDG-F Monitoring Report

|  |  |  |   |  |   |
|--|--|--|---|--|---|
|  |  |  |   | <ul style="list-style-type: none"> <li>- Review of deliverables</li> <li>- Conduct of/participate in actual M&amp;E</li> </ul>   | <p><b>National and local elections posed difficulties in the conduct of local activities.</b></p> <p><b>Low political commitment at national &amp; local levels, arising from change in administration, may delay project implementation.</b></p> |
| <p><b>Output 2.4</b><br/>Advocacy and awareness raised of LGUs, WSPs, and community on a) WSP responsibilities; b) customer service code; c) KPIs and standards; d) tariff setting and regulation; e) management and operations options/alternatives; and f) sanitation.</p> | <p><b>Indicator(s):</b>1 national IEC plan; 36 localized IEC plans;<br/>% increase over baseline on the level of awareness of LGUs, WSPs, and community</p> <p><b>Baseline:</b> Data on level of awareness of LGUs, WSPs, community to be determined from the on-going baseline survey</p> | <p>Government Reports (DILG/NWRB/LWUA/LGU)</p> <p>LGU Development Plans</p> <p>Progress/Annual Reports</p> <p>IEC National Plan</p> <p>Localized IEC Plans</p> | <p>Research/Data Collection (Jan 2010-Dec 2011)</p> <p>Research/Data Collection (Jan 2010-Dec 2011)</p> <p>Regular M&amp;E and Reporting (Quarterly/Annual)</p> <p>Regular M&amp;E and Reporting (Quarterly/Annual)</p> <p>Government Reports on MDGs esp. on Water &amp; Sanitation (Annual)</p> | <p>DILG:</p> <ul style="list-style-type: none"> <li>- Prepare TOR</li> <li>- Review deliverables/ outputs of consultancy firm</li> <li>- Coordinate with LGUs and WSPs</li> <li>- Participate in actual M&amp;E</li> </ul> <p>UNICEF:</p> <ul style="list-style-type: none"> <li>- Review of deliverables</li> <li>- Conduct of actual M&amp;E</li> </ul> <p>Other Partners (e.g., UNDP, NEDA, NWRB):</p> <ul style="list-style-type: none"> <li>- Review of deliverables</li> <li>- Conduct of/participate in actual M&amp;E</li> </ul> | <p><b>Conflicting national and local laws and policies.</b></p> <p><b>Weak capacity of NGAs and LGUs to implement projects.</b></p> <p><b>Lack of support from the private sector.</b></p>  |

c. Joint Programme Results Framework with financial information



## MDG-F Monitoring Report

| JP output: 1.1 Please highlight the rate of delivery for each joint programme's output:   |  |      |    |           |                               |                   |   |  |                              |                                  |                                  |
|---|--|------|----|-----------|-------------------------------|-------------------|---|--|------------------------------|----------------------------------|----------------------------------|
| a. Less than 30% b. between 31%-50% c. between 51-60 d. between 61%-70% e. between 71%-80 d. More than 80%  |  |      |    |           |                               |                   |   |  |                              |                                  |                                  |
| Outputs   | Activity   | YEAR |    | UN AGENCY | RESPONSIBLE PARTY             | Source of Funding | Budget description  | Estimated Implementation Progress (in '000 US\$) |                              |                                  |                                  |
|   |  | Y1   | Y2 |           |                               |                   |   | NATIONAL/ LOCAL                                  | Total Amount Planned (Y1-Y3) | Estimated Total Amount Committed | Estimated Total Amount Disbursed |
| Output 1.1 Incentives mechanisms and partnership modalities (e.g., leveraging local capital and/or subsidy) developed and enhanced for investments in "waterless" and poor communities. | 1.1.a Prepare TOR for study and experts  | X    |    | UNICEF    | NEDA                          | MDG-F             | Contracts<br>Equipment<br>Supplies<br>Conference/Training<br>Travel<br>Other Direct Costs | 252.83 <sup>6</sup>                              | 102.37                       | 16.36                            | 6.47%                            |
|   | 1.1.b.1 Procurement/Hiring of experts  | X    |    | UNICEF    | NEDA                          | MDG-F             |   |  |                              |                                  |                                  |
|   | 1.1.b.2 Mobilization of Study Team; preparation of Work and Financial Plan   | X    |    | UNICEF    | NEDA/Study Team               | MDG-F             |   |  |                              |                                  |                                  |
|   | 1.1.c.1. Inventory of existing incentives and partnership modalities employed by various programs of government, NGOs, and the PS  | X    |    | UNICEF    | NEDA/Study Team               | MDG-F             |   |  |                              |                                  |                                  |
|   | 1.1.c.2 Literature review of other local and international practices   | X    |    | UNICEF    | NEDA/Study Team               | MDG-F             |   |  |                              |                                  |                                  |
|   | 1.1.c.3 Consultation with major stakeholders at the national level   | X    |    | UNICEF    | NEDA/Study Team               | MDG-F             |   |  |                              |                                  |                                  |
|   | 1.1.c.4 Submission and review of Inception Report  | X    |    | UNICEF    | NEDA/Study Team/<br>Study TWG |                   |   |  |                              |                                  |                                  |
|   | 1.1.d.1 Stocktaking of existing policies, laws, issuances and rules and regulations that encourage or discourage either public or private entities to invest at the local level            |      |    | UNICEF    | NEDA/Study Team               | MDG-F             |   |  |                              |                                  |                                  |
|   | 1.1.d.2 Characterization of WSPs in terms of operations and business practices   | X    |    | UNICEF    | NEDA/Study Team               | MDG-F             |   |  |                              |                                  |                                  |
|   | 1.1.d.3 Assessment of locally and internationally available mechanisms for possible application in waterless and rural areas taking consideration the WSP existing in waterless/poor areas | X    |    | UNICEF    | NEDA/Study Team               | MDG-F             |   |  |                              |                                  |                                  |
|   | 1.1.d.4 Submission of draft compendium of partnerships and incentive modalities  | X    |    | UNICEF    | NEDA/Study Team               | MDG-F             |   |  |                              |                                  |                                  |
|   | 1.1.d.5 National Consultations   | X    |    | UNICEF    | NEDA/Study Team               | MDG-F             |   |  |                              |                                  |                                  |

<sup>6</sup>Excluding equipment costs amounting to US\$ 7,500 which is pooled with equipment costs of other NEDA-led outputs under PMU costs

## MDG-F Monitoring Report

|  |   |   |   |        |                               |       |   |                     |              |              |       |
|--|---|---|---|--------|-------------------------------|-------|---|---------------------|--------------|--------------|-------|
|  | 1.1.d.6 Development of draft framework for partnerships and incentives provision in the provision of water supply services in waterless and poor communities                  | X |   | UNICEF | NEDA/Study Team               | MDG-F |   |                     |              |              |       |
|  | 1.1.d.7 Submission and review of Interim Report   |   | X | UNICEF | NEDA/Study Team/<br>Study TWG | MDG-F |   |                     |              |              |       |
|  | 1.1.e.1 Formulation of recommended enhancements to existing incentives and partnership (with various potential partners) modalities for different WSPs                        |   | X | UNICEF | NEDA/Study Team               | MDG-F |   |                     |              |              |       |
|  | 1.1.e.2 Formulation of innovative incentives and partnership (with different potential partners) modalities for WSPs that can be potentially adopted in waterless/rural areas |   | X | UNICEF | NEDA/Study Team               | MDG-F |   |                     |              |              |       |
|  | 1.1.e.3 Development of a detailed action plan for the implementation of the recommended incentive/partnership mechanisms by different WSPs                                    |   | X | UNICEF | NEDA/Study Team               | MDG-F |   |                     |              |              |       |
|  | 1.1.e.4 National Consultations (presentation of recommendations)  |   | X | UNICEF | NEDA/Study Team               | MDG-F |   |                     |              |              |       |
|  | 1.1.e.5 Submission and review of Draft Final Report   |   | X | UNICEF | NEDA/Study Team/<br>Study TWG | MDG-F |   |                     |              |              |       |
|  | 1.1.f.1 Draft INFRACOM and other committee resolutions  |   | X | UNICEF | NEDA/Study Team               | MDG-F |   |                     |              |              |       |
|  | 1.1.f.2 Presentation to INFRACOM and other relevant committees  |   | X | UNICEF | NEDA/Study Team               | MDG-F |   |                     |              |              |       |
|  | 1.1.f.3 Final revision of framework and action plan   |   | X | UNICEF | NEDA/Study Team               | MDG-F |   |                     |              |              |       |
|  | 1.1.f.4 Submission and review of Final Report   |   | X | UNICEF | NEDA/Study Team/<br>Study TWG | MDG-F |   |                     |              |              |       |
| <b>Total</b>                             |   |   |   |        |                               |       | <b>252.83</b>   | <b>102.37</b>       | <b>16.36</b> | <b>6.47%</b> |       |
| Output<br>1.2.1<br>Policy on<br>National | 1. 2.1.a Prepare TOR for study and experts  | X |   | UNICEF | NEDA                          | MDG-F | Contracts<br>Equipment<br>Supplies<br>Conference/Training | 257.83 <sup>7</sup> | 108.17       | 20.11        | 7.80% |
|  | 1. 2.1.b.1 Procurement/Hiring of experts  | X |   | UNICEF | NEDA                          | MDG-F |   |                     |              |              |       |
|  | 1.2.1.b.2 Mobilization of Study Team; preparation of Work and Financial Plan  | X |   | UNICEF | NEDA/Study Team               | MDG-F |   |                     |              |              |       |

<sup>7</sup>Excluding equipment costs amounting to US\$ 2,500 which is pooled with equipment costs of other NEDA-led outputs under PMU costs

## MDG-F Monitoring Report

|  |   |   |        |                 |                               |       |   |                     |       |       |        |
|--|---|---|--------|-----------------|-------------------------------|-------|---|---------------------|-------|-------|--------|
|  | 1.2.1.c.1 Initial review of reports and policies on NG-LGU cost-sharing                                       | X |        | UNICEF          | NEDA/Study Team               | MDG-F | Travel<br>Other Direct Costs  |                     |       |       |        |
|  | 1.2.1.c.2 Identification of LGUs to be covered  | X |        | UNICEF          | NEDA/Study Team               | MDG-F |   |                     |       |       |        |
|  | 1.2.1.c.3 Submission and review of Inception Report   | X |        | UNICEF          | NEDA/Study Team/<br>Study TWG |       |   |                     |       |       |        |
|  | 1.2.1.d.1 Assessment of current NG-LGU cost-sharing arrangement thru literature review and FGDs/consultations | X |        | UNICEF          | NEDA/Study Team               | MDG-F |   |                     |       |       |        |
|  | 1.2.1.d.2 Development of draft grant/subsidy framework thru literature review and FGDs/consultations          |   | X      | UNICEF          | NEDA/Study Team               | MDG-F |   |                     |       |       |        |
|  | 1.2.1.d.3 Submission and review of Interim Report   |   | X      | UNICEF          | NEDA/Study Team/<br>Study TWG | MDG-F |   |                     |       |       |        |
|  | 1.2.1.e.1 Formulation of guidelines within new framework  |   | X      | UNICEF          | NEDA/Study Team               | MDG-F |   |                     |       |       |        |
|  | 1.2.1.e.2 Consultation workshops  |   | X      | UNICEF          | NEDA/Study Team               | MDG-F |   |                     |       |       |        |
|  | 1.2.1.e.3 Submission and review of Draft Final Report   |   | X      | UNICEF          | NEDA/Study Team/<br>Study TWG | MDG-F |   |                     |       |       |        |
|  | 1.2.1.f.1 Draft INFRACOM and other committee resolutions  |   | X      | UNICEF          | NEDA/Study Team               | MDG-F |   |                     |       |       |        |
|  | 1.2.1.f.2 Presentation to INFRACOM and other relevant committees  |   | X      | UNICEF          | NEDA/Study Team               | MDG-F |   |                     |       |       |        |
|  | 1.2.1.f.3 Final revision of guidelines and framework  |   | X      | UNICEF          | NEDA/Study Team               | MDG-F |   |                     |       |       |        |
|  | 1.2.1.f.4 Submission and review of Final Report   |   | X      | UNICEF          | NEDA/Study Team/<br>Study TWG | MDG-F |   |                     |       |       |        |
|  | <b>Total</b>  |   |        |                 |                               |       |   |                     |       |       |        |
| Output 1.2.2 Programming policies of the P3W reviewed and amended, and recommended for adoption. | 1.2.2.a Prepare TOR for study and experts   | X |        | UNICEF          | NEDA                          | MDG-F | Contracts<br>Equipment<br>Supplies<br>Conference/Training<br>Travel<br>Other Direct Costs | 181.73 <sup>8</sup> | 75.16 | 24.84 | 13.67% |
|  | 1.2.2.b.1 Procurement/Hiring of experts   | X |        | UNICEF          | NEDA                          | MDG-F |   |                     |       |       |        |
|  | 1.2.2.b.2 Mobilization of Study Team; preparation of Work and Financial Plan                                  | X |        | UNICEF          | NEDA/Study Team               | MDG-F |   |                     |       |       |        |
|  | 1.2.2.c.1 Initial review of secondary information   | X |        | UNICEF          | NEDA/Study Team               | MDG-F |   |                     |       |       |        |
|  | 1.2.2.c.2 Submission and review of Inception Report   | X |        | UNICEF          | NEDA/Study Team               | MDG-F |   |                     |       |       |        |
|  | 1.2.2.d.1 Review of secondary materials and reports on the program  | X |        | UNICEF          | NEDA/Study Team               | MDG-F |   |                     |       |       |        |
|  | 1.2.2.d.2 Assessment of current implementation of P3W   | X |        | UNICEF          | NEDA/Study Team               | MDG-F |   |                     |       |       |        |
| 1.2.2.d.3 Focus Group Discussions  | X   |   | UNICEF | NEDA/Study Team | MDG-F                         |       |   |                     |       |       |        |

<sup>8</sup>Excluding equipment costs amounting to US\$ 2,500 which is pooled with equipment costs of other NEDA-led outputs under PMU costs

## MDG-F Monitoring Report

|   |   |   |   |        |                            |       |  |                     |               |               |               |
|---|---|---|---|--------|----------------------------|-------|--|---------------------|---------------|---------------|---------------|
|   | 1.2.2.d.4 Submission and review of Assessment Report  | X |   | UNICEF | NEDA/Study Team/ Study TWG | MDG-F |  |                     |               |               |               |
|   | 1.2.2.e.1 Initial review and redraft of Implementing Guidelines                                     | X |   | UNICEF | NEDA/Study Team            | MDG-F |  |                     |               |               |               |
|   | 1.2.2.e.2 Consultation workshops  | X |   | UNICEF | NEDA/Study Team            | MDG-F |  |                     |               |               |               |
|   | 1.2.2.e.3 Submission and review of Draft Revised Guidelines   | X |   | UNICEF | NEDA/Study Team/ Study TWG | MDG-F |  |                     |               |               |               |
|   | 1.2.2.f.1 Draft INFRACOM and other committee resolutions  |   |   | UNICEF | NEDA/Study Team            | MDG-F |  |                     |               |               |               |
|   | 1.2.2.f.2 Presentation to INFRACOM and other relevant committees                                    |   |   | UNICEF | NEDA/Study Team            | MDG-F |  |                     |               |               |               |
|   | 1.2.2.f.3 Final revision of guidelines  |   |   | UNICEF | NEDA/Study Team            | MDG-F |  |                     |               |               |               |
|   | 1.2.2.f.4 Submission and review of Final Report   |   |   | UNICEF | NEDA/Study Team/ Study TWG | MDG-F |  |                     |               |               |               |
| <b>Total</b>  |   |   |   |        |                            |       |  | <b>181.73</b>       | <b>75.16</b>  | <b>24.84</b>  | <b>13.67%</b> |
| Output: 1.3 WATSAN Councils and User Associations Organized | 1.3.1 Conduct baseline survey of waterless areas without organized local user                       |   | X | UNDP   | DILG                       | MDG-F | Contracts<br>Personnel<br>Supplies<br>Travel<br>Training<br>Other Direct Costs | 1285.68             | 569.57        | 404.03        | 31.43%        |
|   | 1.3.2 Conduct inclusive consultations and mobilization for WATSAN Councils                          |   | X | UNDP   | DILG                       | MDG-F | Supplies<br>Other Direct Costs   |                     |               |               |               |
|   | 1.3.3 Conduct inclusive consultations and mobilization for user associations                        |   | X | UNDP   | DILG                       | MDG-F | Supplies<br>Travel<br>Transportation<br>Training<br>Other Direct Cost          |                     |               |               |               |
| <b>Total</b>  |   |   |   |        |                            |       |  | <b>1285.68</b>      | <b>569.57</b> | <b>404.03</b> | <b>31.43%</b> |
| Output 1.4<br>Tariff-setting methodology adjusted for small | 1.4.a Prepare TOR for study and experts   | X |   | UNICEF | NEDA                       | MDG-F | Contracts  | 181.73 <sup>9</sup> | 64.55         | 15.00         | 8.25%         |
|   | 1.4.b.1 Procurement/Hiring of experts   | X |   | UNICEF | NEDA                       | MDG-F | Equipment  |                     |               |               |               |
|   | 1.4.b.2 Mobilization of Study Team; preparation of Work and Financial Plan                          | X |   | UNICEF | NEDA/Study Team            | MDG-F | Supplies<br>Conference/Training  |                     |               |               |               |
|   | 1.4.c.1 Literary review of proven and effective international best practices on economic regulation | X |   | UNICEF | NEDA/Study Team            | MDG-F | Travel<br>Other Direct Costs   |                     |               |               |               |

<sup>9</sup>Excluding equipment costs amounting to US\$ 2,500 which is pooled with equipment costs of other NEDA-led outputs under PMU costs

## MDG-F Monitoring Report

|   |  |   |   |        |                            |       |   |               |              |              |              |
|---|--|---|---|--------|----------------------------|-------|---|---------------|--------------|--------------|--------------|
|   | 1.4.c.2 Review of existing regulatory framework as well as relevant laws   | X |   | UNICEF | NEDA/Study Team/ Study TWG |       |   |               |              |              |              |
|   | 1.4.c.3 Review of existing 5-year tariff-setting methodology used by NWRB as well as other methodologies used currently used in the sector | X |   | UNICEF | NEDA/Study Team            | MDG-F |   |               |              |              |              |
|   | 1.4.c.4 Key interviews with major stakeholders at the national level   | X |   | UNICEF | NEDA/Study Team            | MDG-F |   |               |              |              |              |
|   | 1.4.c.5 Submission and review of Inception Report  | X |   | UNICEF | NEDA/Study Team/ Study TWG |       |   |               |              |              |              |
|   | 1.4.d.1 Gather relevant data for the categorization of WSPs nationwide   | X |   | UNICEF | NEDA/Study Team            | MDG-F |   |               |              |              |              |
|   | 1.4.d.2 Assessment of current implementation of P3W  | X |   | UNICEF |                            | MDG-F |   |               |              |              |              |
|   | 1.4.d.3 Focus Group Discussions  | X |   | UNICEF | NEDA/Study Team            | MDG-F |   |               |              |              |              |
|   | 1.4.d.4 Submission and review of Assessment Report   | X |   | UNICEF | NEDA/Study Team/ Study TWG | MDG-F |   |               |              |              |              |
|   | 1.4.e.1 Initial review and redraft of Implementing Guidelines  | X |   | UNICEF | NEDA/Study Team            | MDG-F |   |               |              |              |              |
|   | 1.4.e.2 Consultation workshops   | X | X | UNICEF | NEDA/Study Team            | MDG-F |   |               |              |              |              |
|   | 1.4.e.3 Submission and review of Draft Revised Guidelines  |   | X | UNICEF | NEDA/Study Team/ Study TWG | MDG-F |   |               |              |              |              |
|   | 1.4.f.1 Draft INFRACOM and other committee resolutions   |   | X | UNICEF | NEDA/Study Team            | MDG-F |   |               |              |              |              |
|   | 1.4.f.2 Presentation to INFRACOM and other relevant committees   |   | X | UNICEF | NEDA/Study Team            | MDG-F |   |               |              |              |              |
|   | 1.4.f.3 Final revision of guidelines   |   | X | UNICEF | NEDA/Study Team            | MDG-F |   |               |              |              |              |
|   | 1.4.f.4 Submission and review of Final Report  |   | X | UNICEF | NEDA/Study Team/ Study TWG | MDG-F |   |               |              |              |              |
|   |  |   |   |        |                            |       | <b>Total</b>  | <b>181.73</b> | <b>64.55</b> | <b>15.00</b> | <b>8.25%</b> |
| Output 2.1 Capacities at the local level strengthened | 2.1.1 Assess current mentoring practices and practitioners   |   | X | UNDP   | NEDA                       | MDG-F | Contracts<br>Equipment<br>Supplies<br>Conference/Training<br>Travel<br>Other Direct Costs | 185.57        | 51.81        | 31.13        | 16.77%       |
|   | 2.1.2 Conduct assessment for WATSAN Councils   |   | X | UNDP   | DILG                       | MDG-F | Supplies<br>Travel Transportation   | 730.89        | 110.32       | 68.34        | 9.35%        |
|   | 2.1.3 Develop and pilot mentoring mechanisms (i.e. how to conduct and operationalize)  |   | X | UNDP   | DILG                       | MDG-F | Training<br>Other Direct Costs  |               |              |              |              |

## MDG-F Monitoring Report

|  |  |   |   |                 |      |       |   |                      |               |                     |               |
|--|--|---|---|-----------------|------|-------|---|----------------------|---------------|---------------------|---------------|
|  | 2.1.4 WATSAN toolbox ready for roll-out  | X | X | UNDP            | DILG | MDG-F |   |                      |               |                     |               |
|  | 2.1.5 Conduct intensive learning program for WATSAN Councils and user associations |   | X | UNDP            | DILG | MDG-F |   |                      |               |                     |               |
| <b>Total</b>   |  |   |   |                 |      |       |   | <b>916.45</b>        | <b>162.13</b> | <b>99.47</b>        | <b>10.85%</b> |
| Output 2.2<br>Improved<br>sector plans<br>formulated             | 2.2.1 Formulate sector plans   |   | X | UNDP            | DILG | MDG-F | Contracts<br>Personnel  | 857.16               | 122.44        | 121.68              | 14.20%        |
|  | 2.2.2 Implement/Install M&E  |   | X | UNDP            | DILG | MDG-F | Supplies<br>Travel<br>Training<br>Other Direct Costs  |                      |               |                     |               |
| <b>Total</b>   |  |   |   |                 |      |       |   | <b>857.16</b>        | <b>122.44</b> | <b>121.68</b>       | <b>14.20%</b> |
| Output 2.3<br>Localized<br>Customer<br>Service Code              | 2.3.1 Formulate localized service code using NWRB guidelines                       |   | X | UNDP            | DILG | MDG-F | Contracts<br>Personnel<br>Supplies<br>Travel<br>Training<br>Other Direct Costs                          | 115.52               | 79.15         | 61.64               | 53.36%        |
|  | <b>Total</b>   |   |   |                 |      |       |   |                      | <b>115.52</b> | <b>79.15</b>        | <b>61.64</b>  |
| Output 2.4<br>Advocacy and<br>awareness raised<br>of LGUs, WSPs, | 2.4.1 Design and implement IEC plan  |   | X | UNICEF          | DILG | MDG-F | Contracts<br>Personnel<br>Supplies<br>Personnel Travel<br>Training<br>Counterparts<br>Other Direct Cost | 389.40               | 95.75         | 17.64               | 4.53%         |
|  | <b>Total</b>   |   |   |                 |      |       |   |                      | <b>389.40</b> | <b>95.75</b>        | <b>17.64</b>  |
| JP Programme Management<br>Support                               | 1. JPD preparation activities  | X |   | UNDP            | NEDA | MDG-F | Other Direct Costs  | 550.41 <sup>10</sup> | 153.99        | 10.43 <sup>11</sup> |               |
|  | 2. JPD Launching   | X |   | UNDP            | NEDA | MDG-F | Other Direct Costs  |                      |               | 2.45                |               |
|  | 3. PMC Establishment   | X |   | UNICEF,<br>UNDP | NEDA | MDG-F | Personnel<br>Transport<br>Other Direct Costs  |                      |               | 54.61               |               |
|  | 4. PMC Meetings  | X |   | UNDP            | NEDA | MDG-F | Other Direct Costs  |                      |               | 0.11                |               |
|  | 5. Coordination Meetings (TWG, other JPs, other agencies, experts, etc.)           | X | X | UNDP,<br>UNICEF | NEDA | MDG-F | Other Direct Costs  |                      |               | 0.41                |               |
|  | 6. Pre-Implementation Workshop   | X |   | UNDP            | NEDA | MDG-F | Conference/Training<br>Other Direct Costs   |                      |               | 1.73                |               |

<sup>10</sup>Inclusive of pooled equipment costs from other NEDA-led Outcome 1 outputs

<sup>11</sup>Cash advance for advance formulation (US\$20,000)

### MDG-F Monitoring Report

|  |   |   |                 |      |       |  |               |               |              |               |  |
|--|---|---|-----------------|------|-------|--|---------------|---------------|--------------|---------------|--|
| 7. Orientation Workshop                    | X |   | UNICEF          | NEDA | MDG-F | Conference/Training<br>Other Direct Costs                        |               |               | 1.16         |               |  |
| 8. Annual Reviews and Planning Workshop    | X |   | UNICEF          | NEDA | MDG-F | Conference/Training<br>Supplies<br>Other Direct Costs            |               |               | 0.67         |               |  |
| 9. M&E Framework                           | X | X | UNICEF,<br>UNDP | NEDA | MDG-F | Contracts<br>Conference/Training<br>Travel<br>Other Direct Costs |               |               | 3.84         |               |  |
| 10. Site Visits                            | X | X | UNDP            | NEDA | MDG-F | Travel<br>Other Direct Costs                                     |               |               | 1.05         |               |  |
| 11. IEC                                    | X | X | UNICEF          | NEDA | MDG-F | Contracts<br>Conference/Training<br>Travel<br>Other Direct Costs |               |               | 2.95         |               |  |
| 12. Supplies and Equipment                 | X |   | UNICEF          | NEDA | MDG-F | Supplies<br>Equipment  |               |               | 10.85        |               |  |
| 13. Annual Audit                           | X |   | UNICEF,<br>UNDP | NEDA | MDG-F | Contracts<br>Supplies<br>Other Direct Costs                      |               |               |              |               |  |
| 14. Other management establishment support | X | X | UNDP            | NEDA | MDG-F | Travel<br>Other Direct Costs                                     |               |               | 1.34         |               |  |
| <b>Total</b>                               |   |   |                 |      |       |  | <b>550.41</b> | <b>153.99</b> | <b>91.60</b> | <b>16.64%</b> |  |

## Section II: Joint Programme Progress

### a. Narrative on progress, obstacles and contingency measures

There are still no results to report on as the programme is still in its 1<sup>st</sup> year of implementation. Nevertheless, progress in activities leading to the achievement of the results is reported below:

#### **Progress in outcomes:**

- Outcome 1:
  - Implementation of activities under the four (4) policy studies under Outputs 1.1, 1.2.1, 1.2.2 and 1.4 of Outcome 1 is in full swing since the beginning of the year. Despite the minor delays encountered particularly arising from difficulties in coordinating and conducting local activities during the period of the election campaign, the studies are expected to be completed within the 3-year implementation period and without compromising the timeframes of other activities of the JP.
- Outcome 2:
  - Groundwork for the building of local capacities in terms of water and sanitation planning and monitoring, customer service code formulation, water and sanitation toolbox application and information, education and communication planning is ongoing.

#### **Progress in outputs:**

- Outputs 1.1 and 1.2.1: Study teams are currently in the process of analysing the data they have gathered from the field.
- Outputs 1.2.2 and 1.4: Study teams have completed their data gathering from the field and are currently analysing the data they have gathered. The teams' final deliverables are expected within the 3<sup>rd</sup> Quarter of the year.
- Output 1.3: Draft baseline surveys were formulated with the participation of IPs and RPs. The baseline survey instrument was pre-tested in the 1<sup>st</sup> quarter of 2010, the results of which were used for the refinement of the guidelines and the completion of the manuals for the survey. Technical Inventory Trainings for the Baseline Survey were conducted in Regions 2, 5, 9, 10 and 13.
- Output 2.1.1: The Study Team subjected for validation of stakeholders and experts their initial findings and recommendations on mentoring practices and practitioners. In capacity assessment, consultations on the Capacity Assessment Framework and a Capacity Development Scoping workshop were conducted, as well as a 'Training of Trainers' for the Capacity Assessment Team. Consultants for the needs assessment and formulation of training modules have been on board since June 2010.
- Output 2.1.2: A Capacity Assessment Framework for Local Water Governance was developed. Formulation of TOR for the WATSAN Toolbox Consultancy Services is ongoing.
- Output 2.2: The Local M&E Assessment Report is being finalized. Procurement of Consultancy Firm to assist in the formulation of local plans is completed and awaiting CAP approval from UNDP Bangkok.
- Output 2.3: A draft Localized Customer Service Code was prepared based on results of consultations and validation workshops.
- Output 2.4: The IEC Research Study was completed. Initial "Key Messages on MDGF 1919" were formulated. A Press Conference and Publicity for the MDGF 1919 in Region 10 (Northern Mindanao) was conducted. Initial IEC collaterals (brochures, tarpaulins, billboard, etc.) developed for national and local distribution. The strategic communication plan is expected to be completed by July 2010.



## MDG-F Monitoring Report

**Are there difficulties in the implementation? What are the causes of these difficulties? Please check the most suitable option**

- UN agency Coordination
- Coordination with Government
- Coordination within the Government (s)
- Administrative (Procurement, etc) /Financial (management of funds, availability, budget revision, etc)
- Management: 1. Activity and output management 2. Governance/Decision making (PMC/NSC) 3. Accountability
- Joint Programme design
- External to the Joint Programme (risks and assumptions, elections, natural disaster, social unrest, etc)
- Other. Please specify:  
Disharmonized UN agency financial rules and guidelines have caused additional encumbrance to government partners in planning, budgeting, management and reporting

- b. Please, briefly describe (250 words) the current difficulties the Joint Programme is facing. Refer only to progress in relation to the planned in the Joint Program Document. Try to describe facts avoiding interpretations or personal opinions.

Delays have been encountered at the beginning of the year due to the protracted response time of partner agencies to review and comment on the reports (e.g., inception report) being submitted by the policy study teams. It took the Technical Working Group one month to review vis-à-vis the one week indicated in the teams' workplans.

Delays in activities were also encountered as a result of the slow procurement of UN partner agencies for equipment and software requested as early as August 2009, supplies, and consultancy services (e.g., Outputs 1.3, 2.2 and 2.4).

While there was a delay in the approval of the JP AWP for 2010 (February 2010), the delay was compounded by the delays in the approval of the agency (NEDA/DILG) 2010 AWP by UNDP. Subsequently, there was a delay in the release of the January-June 2010 funds (20 April for DILG and 27 May for NEDA). UNICEF is yet to release funds for the DILG component (Output 2.4). Said delays have resulted in the postponement and rescheduling of some JP activities.

Particularly for UNICEF, there is no smooth transition from the original JP focal persons (for overall JP and for IEC).

- c. Please, briefly describe (250 words) the current external difficulties (not caused by the joint programme) that delay implementation. Try to describe facts avoiding interpretations or personal opinions.

The elections in May 2010 resulted in difficulties in coordinating and conducting local activities during the campaign period particularly in (i) scheduling and siting of workshops/consultations, (ii) confirming participation, (iii) availability of local government personnel (some were running for office).

## MDG-F Monitoring Report

- d. Please, briefly explain (250 words) the actions that are or will be taken to eliminate or mitigate the difficulties (internal and external referred B+C) described in the previous **text boxes b and c**. Try to be specific in your answer.

Overall, the JP is set to come up with an updated plan in its planning exercise in July 2010 that will ensure completion of activities within the 3-year implementation period of the JP.

In the review of output deliverables, where a joint review by the Joint Technical Working Group is not feasible, NEDA and DILG are strictly imposing one-week deadlines, with the understanding that should there be no comments/recommendations received before said deadline, the outputs/deliverables are deemed acceptable.

A permanent focal person from UNICEF has been assigned to the JP, and has agreed to take on both responsibilities (overall JP technical and IEC). An agreement was reached with the UNICEF AND UNDP focal persons that all communications requiring immediate technical or administrative inputs from said agencies will be provided to them to facilitate response/action. For Output 1.3, DILG is preparing an alternative procurement plan should the procurement by UNDP regional office not be completed/concluded by July 2010. Regular official follow-ups have also been resorted to.

To avoid future delays in the approval of the JP AWP, the PMC instructed the PMT to conduct the planning exercise earlier in the year so as to have the AWP ready for PMC and NSC approval by November.

To avert major delays from the election, the study teams have changed methodology from focus group discussions to key informant interviews, which are easier to coordinate and schedule.

## MDG-F Monitoring Report

### e. Inter-Agency Coordination and Delivering as One

- Is the Joint Programme in line with the UNDAF? Please check the relevant answer

Yes  No

- If not, does the Joint Programme fit into the national strategies?

Yes  No

If not, please explain:

What types of coordination mechanisms and decisions have been taken to ensure joint delivery? Are different joint programmes in the country coordinating among themselves? Please reflect on these questions above and add any other relevant comments if you consider it necessary:

Apart from the PMC mechanism, the JP has instituted quarterly meetings to ensure that there is communication and coordination between and among the outcome teams. There is also regular contact via e-groups to ensure joint delivery and timely implementation of activities.

The different JPs coordinate among themselves -- either directly or through the UN Coordination Office (UNCO). UNCO also periodically shares relevant information on existing JPs, when relevant.

Please provide the values for each category of the indicator table described below:

| Indicators  | Baseline | Actual Value    | Means of Verification                              | Collection methods                           |
|---|----------|-----------------|--|--|
| Number of managerial practices (financial, procurement, etc) implemented jointly by the UN implementing agencies for MDG-F JPs. | 0        | 0               | Quarterly meetings, PMC Meetings, progress reports | Inter-agency coordination, review of reports |
| Number of joint analytical work (studies, diagnostic) undertaken jointly by UN implementing agencies for MDG-F JPs.             | 0        | 4 <sup>12</sup> | Quarterly meetings, PMC Meetings, Progress reports | Inter-agency coordination, review of reports |
| Number of joint missions undertaken jointly by UN implementing agencies for MDG-F JPs.  | 0        | 1               | Quarterly meetings, PMC Meetings, Progress reports | Inter-agency coordination, review of reports |

<sup>12</sup> For MDG-F 1919: 1 Government partners' assessment, 2 JP Planning/Review workshops, 1 audit

## MDG-F Monitoring Report

Please, provide additional information to substantiate the indicators value (150 words). Try to describe qualitative and quantitative facts avoiding interpretations or personal opinions.

### f. Development Effectiveness: Paris Declaration and Accra Agenda for Action

**Are Government and other national implementation partners involved in the implementation of activities and the delivery of outputs?**

- Not involved
- Slightly involved
- Fairly involved
- Fully involved

**In what kind of decisions and activities is the government involved? Please check the relevant answer**

- Policy/decision making
- Management:  budget  procurement  service provision  other, specify:

**Who leads and/or chair the PMC and how many times have they met?**

Institution leading and/or chairing the PMC NEDA co-chairs PMC with UNRC Number of meetings. 2

**Is civil society involved in the implementation of activities and the delivery of outputs?**

- Not involved
- Slightly involved
- Fairly involved
- Fully involved

**In what kind of decisions and activities is the civil society involved? Please check the relevant answer**

- Policy/decision making
- Management:  budget  procurement  service provision  other, specify:

**Are citizens involved in the implementation of activities and the delivery of outputs?**

- Not involved
- Slightly involved
- Fairly involved
- Fully involved (e.g., cooperation with LGUs as beneficiary and implementers)

## MDG-F Monitoring Report

**In what kind of decisions and activities are citizens involved? Please check the relevant answer**

- Policy/decision making  
 Management:  budget  procurement  service provision  
 other, specify (participatory consultations to surface needs/requirements)

**Where is the joint programme management unit seated?**

- National Government  Local Government  UN Agency  By itself  other, specify

Based on your previous answers, briefly describe the current situation of the government, civil society, private sector and citizens in relation of ownership, alignment and mutual accountability of the joint programmes, please, provide some examples. Try to describe facts avoiding interpretations or personal opinions.

Target local government units (LGUs) are receptive to the JP Outcome 2 and are willing to support and be involved in the implementation and achievement of program outputs. This is evidenced by their willingness to formalize the cooperation thru a Memorandum of Agreement and/or local Executive Ordinance. They have also shown ownership in terms of preparing their regional annual work plans to complement the program's over-all work plan. Local chief executives have also agreed to allocate funds for water supply provision in their 2011 budget.

In terms of IPs, accountability is evidenced by the designation of permanent/organic personnel at the national and local/regional levels complemented by a full time project staff.

### g. Communication and Advocacy

Has the JP articulated an advocacy & communication strategy that helps advance its policy objectives and development outcomes? Please provide a brief explanation of the objectives, key elements and target audience of this strategy, if relevant, please attach (max. 250 words).

- Yes  No

Due to the delays, the IEC component has not been completed as originally scheduled. The IEC specialist has been on board since January 2010, and finalization of the strategic communications plan is expected in July 2010. The highlight of the advocacy and communication strategy at the national level is to tap the media and the civil society, where necessary, to drum up support from the national government, as well as the legislative branch of government, for prioritizing the provision of water to poor communities. Some of the activities being planned is a national forum for members from the House of Representatives aimed at lobbying for legislative agenda that will enhance provision of water to the poor, a video showcase (participated in by university film students) depicting the condition of the people without access to water, and a postcard-making/sending drive (participated in by elementary/secondary school students) aimed at sending the waterless's message (through the youth) to the president, the local representatives and the decision-makers (heads of agencies).

At the local level, the JP will focus on awareness raising for the following: roles and responsibilities of WSPs, tariff setting and regulation, customers service code, key performance indicators and standards, management and operations options, sustainable sanitation to be elaborated in the IEC plan. These core themes can be the bases for increased dialogues on critical MDG related issues among civil society, and eventually encourage or increase participation.

## MDG-F Monitoring Report

What concrete gains are the advocacy and communication efforts outlined in the JP and/or national strategy contributing towards achieving?

- Increased awareness on MDG related issues amongst citizens and governments
- Increased dialogue among citizens, civil society, local national government in relation to development policy and practice
- New/adopted policy and legislation that advance MDGs and related goals
- Establishment and/or liaison with social networks to advance MDGs and related goals
- Key moments/events of social mobilization that highlight issues
- Media outreach and advocacy
- Others (use box below)

What is the number and type of partnerships that have been established amongst different sectors of society to promote the achievement of the MDGs and related goals? Please explain.

- |  |          |
|--|----------|
| <input type="checkbox"/> Faith-based organizations             | Number   |
| <input checked="" type="checkbox"/> Social networks/coalitions | Number 2 |
| <input type="checkbox"/> Local citizen groups                  | Number   |
| <input type="checkbox"/> Private sector                        | Number   |
| <input checked="" type="checkbox"/> Academic institutions      | Number 2 |
| <input type="checkbox"/> Media groups and journalist           | Number   |
| <input type="checkbox"/> Others (use box below)                | Number   |

What outreach activities do the programme implement to ensure that local citizens have adequate access to information on the programme and opportunities to actively participate?

- Focus groups discussions
- Household surveys
- Use of local communication mediums such as radio, theatre groups, newspapers, etc
- Open forum meetings
- Capacity building/trainings
- Others

Mentoring, coaching and field visits are some of the outreach activities that are planned to ensure adequate access to information and participation of local citizens.

## Section III: Millennium Development Goals

## a. Millennium Development Goals

The MDG-F main objective is to contribute to progress to the attainment of the Millennium Development Goals worldwide. This subsection aims to capture data and information on the joint programmes contribution to 1 or more Millennium Development Goals and targets.

For this purpose the Secretariat has developed a matrix where you should link your joint programme outcomes to 1 or more Millennium Development Goals and Targets. This matrix should be interpreted from left to right. As a first step you should reflect on the contributions that each of the JP outcomes is making to one or more MDGs. Once this link is established, it needs to be further developed by connecting each joint programme outcome to one or more MDG targets. As a third step you should estimate the number of beneficiaries the JP is reaching in each of the specific outcomes. Finally you should select the most suitable indicators from your joint programme's M&E framework as a measure of the Millennium targets selected. Please, refer to the example provided below.

| MDG #  | Joint Programme Outcome 1   | MDG Target #   | MDG Indicators   | JP Indicator   |
|--|---|--|--|--|
| <b>Goal # 7: Ensure environmental sustainability</b> | Outcome 1: Investment support mechanisms established for poor communities/municipalities to improve efficiency, access, affordability and quality of potable water. | Target # 11: Halve the proportion of people with no access to safe drinking water and basic sanitation or those who cannot afford it by 2015 | 86.8% of population have access to safe drinking water by 2015 | 4 executive/policy issuance(s) to support investments in poor communities/municipalities in the provision/improvement of water supply services by 2011 |
|  | Joint Programme Outcome 2   | MDG Target #   | MDG Indicator  | JP Indicator   |
|  | Outcome 2: Enhanced capacities of LGUs and WSPs to develop, operate, and manage potable water services.   | Target # 11: Halve the proportion of people with no access to safe drinking water and basic sanitation or those who cannot afford it by 2015 | 86.8% of population have access to safe drinking water by 2015 | % increase in the level of competency of LGUs and WSPs to develop, operate, and manage water services by 2012  |

**Additional Narrative comments**

Please provide any relevant information and contributions of the programme to the MDGs, whether at national or local level.

The JP is designed to complement the President's Priority Program on Water (P3W) for waterless areas in the Philippines. The JP will provide the soft component (capacity building, organization, policies) to P3W which focuses on providing the hard infrastructure (water supply systems) to waterless areas. This is consistent with the recommendations of the Philippine Water Supply Sector Roadmap which stresses the equal importance of the soft and hard components of water supply provision.

## Section IV: General Thematic Indicators

## 1. Strengthen national and local governments' capacity to manage and monitor water supply and sanitation services

**1.1. Number of laws, policies or plans** supported by the joint programme that explicitly aim to improve water and sanitation policies and management

Applies  Does not apply, if so please move to section 1.5

Policies

Laws

Plans

No. National 4

No. Local

No. National

No. Local

No. National

No. Local 36

**1.2. Please briefly provide some contextual information on the law, policy or plan and the country/municipality where it will be implemented** (base line, stage of development and approval, potential impact):

The study will come up with recommendations that will be the basis for policy issuances by relevant committees of the government. The issuance on incentives mechanisms and partnership modalities that poor (waterless) communities can adopt /apply to increase public and private investment in the water services provision. The mechanisms would cover an entire range of incentives, modality (leveraging local capital, subsidy) and potential partners, among others, water districts, national government, civil society organizations and the private sector.

A policy issuance on national government (NG)-local government unit (LGU) cost-sharing arrangement based on the review of the current arrangement aims to balance social subsidies with better ownership, accountability and responsibility from recipient communities. The NG-LGU cost sharing arrangement specifies the amount of grant (as a percentage of the total project cost) that the NG can provide to LGUs. The current cost sharing arrangement is based on the LGU's income classification, where higher earning LGU's receive less grant. Cost sharing (for water supply) should consider a) non-viability of areas, wherein grant should be provided regardless of income class of the LGU and b) limit use of NG grant/subsidy to funding capital expenditure for communities in the periphery of populated areas or in the hinterlands, and/or to water supply association formation/capacity development, among others.

An issuance endorsing enhanced guidelines for the effective implementation of the NG's programs for waterless areas aims to ensure sustainability of water supply systems provided by NG's programs for waterless areas, promote better targeting of NG assistance and enhance accountability and ownership.



A policy issuance on the utilization of an adjusted tariff-setting methodology for small water service providers (WSPs), which typically operate in poor communities, aims to encourage said small WSPs to be formalized and regulated by the National Water Resources Board.

The above issuances will have a nationwide application/scope.

A municipal water supply and sanitation plan will be developed for each of the 36 beneficiary municipalities of the JP. The plans will include situation assessment, targets, local policies (guided by national policies), and fund requirements for their local water and sanitation.

**1.3. Sector where the law, policy or plan is focused:**

**Comments**

- Regulation of competencies and integrated management
- Access to drinking water
- Water use and pricing
- Water supply and quality control
- Sanitation services, spills and dumping control
- Infrastructure  Other Specify: Funding for water infrastructure

**1.4. Number of citizens and/or institutions directly affected by the law, policy or plan**  Applies  Does not apply

|  | Total No.    | No. Urban | No. Rural    |
|--|--------------|-----------|--------------|
| <input checked="" type="checkbox"/> Citizens                     |              |           | 732,000      |
| <input checked="" type="checkbox"/> National Public Institutions | Total No. 3  |           |              |
| <input checked="" type="checkbox"/> Local Public Institutions    | Total No. 36 | No. Urban | No. Rural 36 |
| <input checked="" type="checkbox"/> Water Service Institutions   | Total No. 36 | No. Urban | No. Rural 36 |

**1.5. Number of institutions, civil servants and/or citizens trained to take informed decisions on water management and sanitation issues**

- Applies  Does not apply

|   |              |  |  |
|---|--------------|--|--|
| <input checked="" type="checkbox"/> Public Institutions           | Total No. 39 |  |  |
| <input type="checkbox"/> Private Sector Institutions              | Total No.    |  |  |
| <input type="checkbox"/> NGOs                                     | Total No.    |  |  |
| <input checked="" type="checkbox"/> Community based organizations | Total No. 36 |  |  |

|  |  |   |                      |
|--|--|---|----------------------|
| <input checked="" type="checkbox"/> Civil servants<br><input checked="" type="checkbox"/> Citizens<br><input type="checkbox"/> Other Specify:  | Total No. 107* (excludes local)<br>Total No. | Women 49<br>Women<br>Women  | Men 58<br>Men<br>Men |
| <p><b>1.6. Increase in the area covered by the water supply and sanitation monitoring systems due to the JP Intervention:</b></p> <p><input checked="" type="checkbox"/> Applies   <input type="checkbox"/> Does not apply</p> <p><input checked="" type="checkbox"/> Water supply system:                      % increase<br/> <input checked="" type="checkbox"/> Sanitation system:                              % increase</p> <p>Note: Percentage increase can only be determined after the on-going assessment of the technical inventory of the Baseline Survey.</p> <p style="text-align: right;">Level of analysis of the information compiled<br/> <input type="checkbox"/> National information system   <input checked="" type="checkbox"/> Local information system</p> |  |   |                      |
| <p><b>1.7. <sup>13</sup>Government budget allocated to water and sanitation services before the implementation of the Joint Programme</b></p> <p>National budget:                      204,217.4 \$ USD<br/>                 Total Local budget (s) :                      204,217.4 \$ USD<br/> <i>(in localities of intervention of the JP)</i></p>  |  | <p><b>Comments</b></p> <p>Figures are based on the budget allocated for Regions 2, 5, 9, 10 &amp;13 of the President’s Priority Program on Water (P3W). Percentage of actual budget utilized to be determined after the Baseline Survey</p> |                      |
| <p><b>1.8. Variation (%) in government budget allocated to provide water and sanitation services from the beginning of the joint programme to present time:</b></p> <p>National budget:                      % Overall<br/>                 % Triggered by the Joint Programme</p>   |  | <p><b>Comments</b></p> <p>To be determined after the Baseline Survey and during the formulation of the Municipal Water Supply Sanitation Sewerage Sector Plan (MW4SP)</p>   |                      |
| <p>Local budget:                      % Overall<br/>                 % Triggered by the Joint Programme</p>  |  |   |                      |

<sup>13</sup> For indicators 1.7 and 1.8 the Secretariat acknowledges the potential difficulties to obtain the information requested. Therefore, if not available, please provide the best estimate available. The information requested refers to the budgetary year in which the monitoring report falls

## 2. Improve access to safe drinking water (physical and financial access)

**2.1. Number of citizens that gained access to safe and affordable drinking water with the support of the JP.**  Applies  Does not apply

No. Citizens 732,000

No. Women 363,804

No. Men 368,196

Note: Targeted number based on the planned interventions but benefit may accrue to all 732,000 beyond the 3-year JP period (as JP provides only soft component, i.e., setting the stage for investments on hard infrastructure). Within the JP period, this will be determined during the formulation of MW4SPs

**2.2. Variation (%) of the population with access to drinking water in the region of intervention from the beginning of the programme to present time:** %

Note: To be determined after the conduct of the Baseline Survey.

**2.3. Number of municipalities/communities/cities with increased access to safe and affordable drinking water through the JP**

Total Number 36

No. of Urban Communities

No. of Rural Communities

**2.4<sup>14</sup>. Based on available data, indicate the type of improvements produced on the wellbeing of the population through increased access to potable water:**

Health

Women and children safety<sup>15</sup>

Improvement of livelihoods

**Comments**

The following are the expected improvements based on the planned interventions of the program e.g. advocacy on water supply and sanitation issues, organization of water user associations, capacity

<sup>14</sup> This indicator requires the use of baseline information from which a variation can be observed. If this data is not available the Secretariat recommends collecting it in order to complete this impact indicator for next reporting period.

<sup>15</sup> By eliminating the need to search for water at natural water streams

|   |   |
|---|---|
| <input checked="" type="checkbox"/> Children schooling <sup>16</sup><br><input type="checkbox"/> Affordability<br><input type="checkbox"/> Others, specify: _____ | development among water service providers and local government units, among others. |
|---|---|

**3. Community empowerment and participation in water management decision processes**

**3.1. Number of community organizations<sup>17</sup> strengthened or created leading to increased citizen participation in decision making processes:**

Applies  Does not apply

|                      |           |         |                     |
|----------------------|-----------|---------|---------------------|
| No. Organisations 36 | No. Women | No. Men | %from Ethnic groups |
|----------------------|-----------|---------|---------------------|

**3.2. Number of citizens sensitized on hygiene and sanitation issues.**  Applies  Does not apply

|   |                   |           |         |                     |
|---|-------------------|-----------|---------|---------------------|
| Total No. 275<br><br>Note: Figure is based on the initial IEC Research Study conducted with school children and community organizations, and is expected to increase during the actual IEC campaign | No. Children: 100 | No. Women | No. Men | %from Ethnic groups |
|---|-------------------|-----------|---------|---------------------|

**4. Water supply and sanitation service providers strengthened**

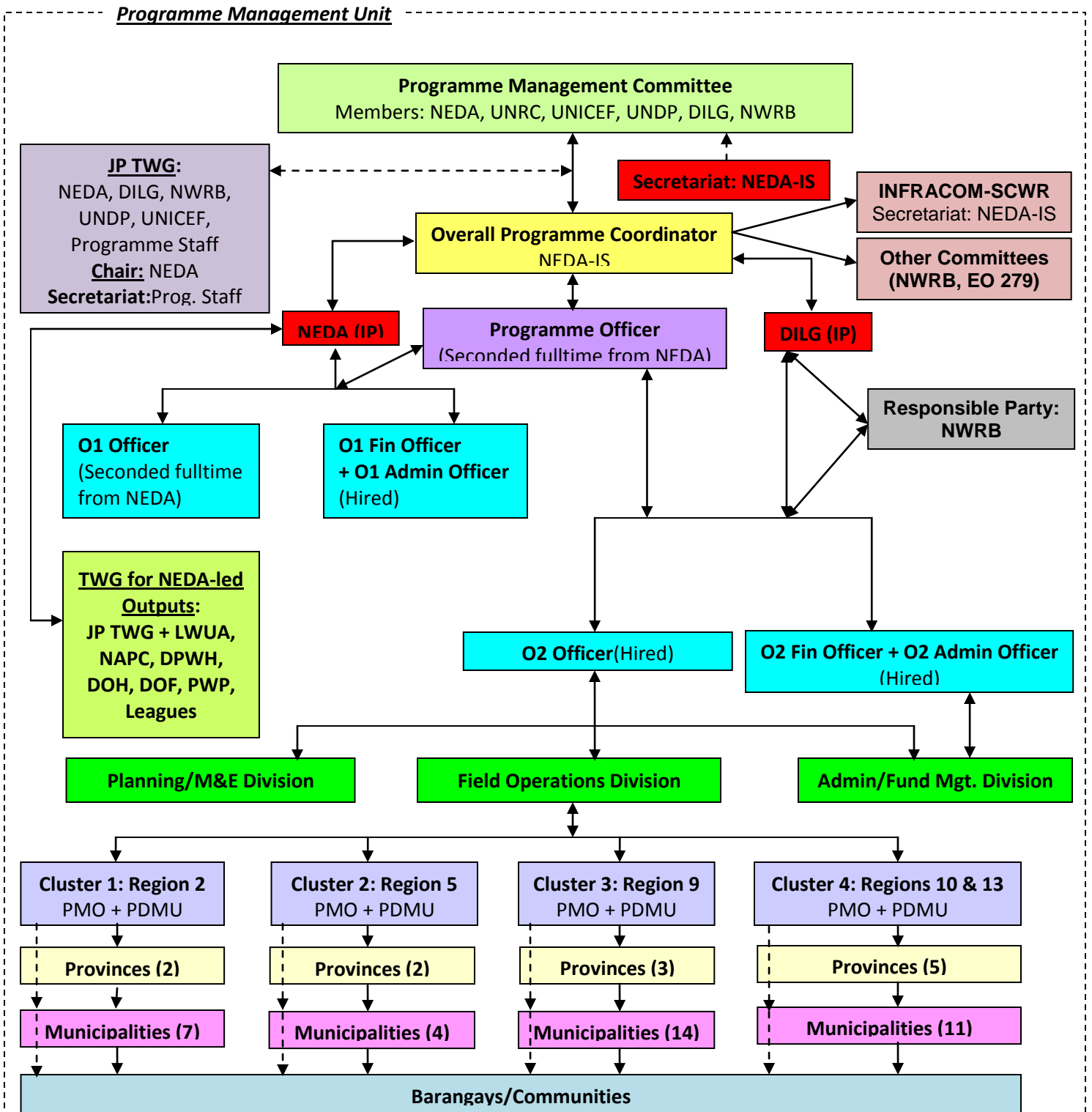
**4.1. Number and type of water and sanitation service providers strengthened:**  Applies  Does not apply

<sup>16</sup>By reducing unavailability due to illness and the time invested in searching for water

<sup>17</sup>These included NGOs, cooperatives, civil society networks, local committees, women and/or youth groups, neighborhood associations, etc.

|  |  |  |                       |   |   |   |                                  |
|--|--|--|-----------------------|---|---|---|----------------------------------|
| <input checked="" type="checkbox"/> Public institutions<br><input checked="" type="checkbox"/> Private Institutions<br><input checked="" type="checkbox"/> Community organizations<br><input type="checkbox"/> Public Private Partnership<br><input type="checkbox"/> Other: Specify<br>Note: To be determined after the Baseline Survey | No.<br>No.<br>No.<br>No.<br>No.<br>Note: To be determined after the Baseline Survey  | <table style="width: 100%; border: none;"> <tr> <td style="width: 50%;"><b>National Level</b></td> <td style="width: 50%;"><b>No.</b></td> <td style="width: 50%;"><b>Local Level</b></td> <td style="width: 50%;"><b>No.</b></td> </tr> </table> Note: To be determined after the Baseline Survey | <b>National Level</b> | <b>No.</b>  | <b>Local Level</b>  | <b>No.</b>  |                                  |
| <b>National Level</b>  | <b>No.</b>   | <b>Local Level</b>   | <b>No.</b>            |   |   |   |                                  |
| <b>4.2. Indicate the type of intervention used to strengthen water and sanitation service providers:</b>   |  |  |                       |   |   |   |                                  |
| <input checked="" type="checkbox"/> Training<br><input checked="" type="checkbox"/> Knowledge transfer   | <input type="checkbox"/> Equipment provision<br><input checked="" type="checkbox"/> Human resources reinforcement  | <input type="checkbox"/> Establishment of public private partnerships  |                       |   |   |   |                                  |
| <b>4.3. Number of water and sanitation service providers mentioned above that have developed or improved a financial plan and sustainability system:</b>   |  |  |                       |   |   |   |                                  |
| Total Number<br><br>Note: To be determined after the Baseline Survey   | Type of financial plan: <table style="width: 100%; border: none;"> <tr> <td style="width: 33%;"><input checked="" type="checkbox"/> Water use tariff structures</td> <td style="width: 33%;"><input checked="" type="checkbox"/> Environmental services payment mechanisms</td> </tr> <tr> <td><input checked="" type="checkbox"/> Loans and grant funds</td> <td><input type="checkbox"/> Others:</td> </tr> </table> |  |                       | <input checked="" type="checkbox"/> Water use tariff structures | <input checked="" type="checkbox"/> Environmental services payment mechanisms | <input checked="" type="checkbox"/> Loans and grant funds | <input type="checkbox"/> Others: |
| <input checked="" type="checkbox"/> Water use tariff structures  | <input checked="" type="checkbox"/> Environmental services payment mechanisms  |  |                       |   |   |   |                                  |
| <input checked="" type="checkbox"/> Loans and grant funds  | <input type="checkbox"/> Others:   |  |                       |   |   |   |                                  |

ANNEX: ORGANIZATIONAL STRUCTURE



JP TWG: Core TWG undertakes JP work planning, budgeting, report preparation, and technical level discussions on implementation concerns.

TWG: Expanded TWG to review outputs/deliverables (e.g., policy study reports, IEC plan) of experts hired under the JP.

Regional Coordinators for 4 Clusters are hired in Manila but based in the regions supervise region-led activity implementation, and coordinate and facilitate activities of IPs, RP and experts at the local level.

Programme Staff: Programme Officer (NEDA), Outcome Officers (NEDA & DILG), Finance Officers (NEDA & DILG), Admin Officers (NEDA & DILG)