

## Section I: Identification and JP Status

### Leave no women behind Joint Programme

#### Semester: 2-11

Country	Ethiopia
Thematic Window	Gender Equality and Women's Empowerment
MDGF Atlas Project	
Program title	Leave no women behind Joint Programme
Report Number	
Reporting Period	2-11
Programme Duration	
Official Starting Date	
Participating UN Organizations	* UNFPA * WFP
Implementing Partners	* Ministry of Finance and Economic Development ( MoFED) * Ministry of Women & Children Affairs (MoWCA) * Regional Bureaus of Agriculture and Rural Development ( BoARD) * Regional Bureaus of Cooperative Promotion Agency. * Regional Bureaus of Education ( BoE) * Regional Bureaus of Finance and Economic Development ( BoFED) * Regional Bureaus of Health ( BoH) * Regional Bureaus of Women Affairs ( BoWA)

#### Budget Summary

Total Approved Budget

WFP	\$4,299,638.00
UNFPA	\$3,200,362.00
<b>Total</b>	<b>\$7,500,000.00</b>

**Total Amount of Transferred To Date**

WFP	\$4,299,638.00
UNFPA	\$3,200,362.00
<b>Total</b>	<b>\$7,500,000.00</b>

**Total Budget Committed To Date**

WFP	\$2,537,689.00
UNFPA	\$1,917,000.00
<b>Total</b>	<b>\$4,454,689.00</b>

**Total Budget Disbursed To Date**

WFP	\$2,707,689.00
UNFPA	\$2,286,812.00
<b>Total</b>	<b>\$4,994,501.00</b>

**Donors**

As you can understand, one of the Goals of the MDG-F is to generate interest and attract funding from other donors. In order to be able to report on this goal in 2010, we would require you to advise us if there has been any complementary financing provided for each programme as per following example:

Please use the same format as in the previous section (budget summary) to report figures (example 50,000.11) for fifty thousand US dollars and eleven cents

Type	Donor	Total	For 2010	For 2011	For 2012
Parallel		\$0.00	\$0.00	\$0.00	\$0.00
Cost Share		\$0.00	\$0.00	\$0.00	\$0.00
Counterpart		\$0.00	\$0.00	\$0.00	\$0.00

DEFINITIONS

1) PARALLEL FINANCING – refers to financing activities related to or complementary to the programme but whose funds are NOT channeled through UN agencies. Example: JAICA decides to finance 10 additional seminars to disseminate the objectives of the programme in additional communities.

2) COST SHARING – refers to financing that is channeled through one or more of the UN agencies executing a particular programme. Example: The Government of Italy gives UNESCO the equivalent of US \$ 200,000 to be spent on activities that expand the reach of planned activities and these funds are channeled through UNESCO.

3) COUNTERPART FUNDS - refers to funds provided by one or several government agencies (in kind or in cash) to expand the reach of the programme. These funds may or may not be channeled through a UN agency. Example: The Ministry of Water donates land to build a pilot 'village water treatment plant' The value of the contribution in kind or the amount of local currency contributed (if in cash) must be recalculated in US \$ and the resulting amount(s) is what is reported in the table above.

## Beneficiaries

Beneficiary type	Targetted	Reached	Category of beneficiary	Type of service or goods delivered
Rural Women participating in CC	8,995	13,321	Citizens/Women	Awareness Raising/Media/Sensitization
Rural Women engaged in Livelihood - trained on IGA and entitled to credit.	8,000	6,424	Citizens/Women	Food Security and Nutrition
Community Members engaged in CC - including women	17,990	23,310	Communities	Awareness Raising/Media/Sensitization
Adolescent girls & Women participating in Life Skill & Literacy	83,750	59,950	Citizens/Women	Women and Girls Literacy/ Education
Adolescent Girls & Women	66,639	60,097	Communities	Health (Including Sexual/Reproductive Health & Hiv)
Health Extension Workers & Health Staff through training.	437	493	Civil Servants/Women	Gender-Responsive Planning, Budgeting, Service Provision

## Section II: JP Progress

### 1 Narrative on progress, obstacles and contingency Measures

Please provide a brief overall assessment (1000 words) of the extent to which the joint programme components are progressing in relation to expected outcomes and outputs, as well as any measures taken for the sustainability of the joint programme during the reporting period. Please, provide examples if relevant. Try to describe facts avoiding interpretations or personal opinions

#### **Plases describe three main achievements that the joint programme has had in this reporting period (max 100 words)**

The three major results identified under this Gender Joint Program (supported by findings of the Mid Term Evaluation Report , October 2010), are:

. Behavioral change at individual and community level, led to collective community actions to reduce Harmful Traditional Practices, Child Marriage and Female Genital Mutilation/ Cutting.

- Reduced prevalence of child marriage by collective community actions/ response taken against. Also testimonies of reduced stigma and discrimination of women living with HIV/ AIDS and increased access of voluntary counseling and testing for HIV/AIDS by the community. In addition, changing gender roles and division of labor at household level.

. Improved livelihood opportunities through capacity building and access to credit , resulted in increased assets and reinforced culture of saving and women's self-esteem.

- The access and ownership of resources, has boosted their self-esteem and changed gender relationships in the household and improved the status of women in the community. It also increased the participation of women in public sphere activities and decision making. The program supported the establishment of 77 saving and credit cooperatives and 79% of the cooperative leaders are composed of women

. Increased sexual and reproductive health seeking behavior and use of health services among adolescent girls and women.

- Improving the knowledge of adolescent girls and women on sexual and reproductive health issues, through trainings/discussion groups led by health extension workers and changing attitudes and norms through the community conversation sessions, all these efforts combined, with additional health supplies/procurement and training of health staff on gender sensitive service delivery, resulted in: Slightly increasing trend in women delivering at health centers and health posts assisted by a trained health professional and significantly increasing number of women using family planning and maternal health services.

#### **Progress in outcomes**

. Outcome 1: Behavioral change at individual and community level.

-. Reduced prevalence of early marriage by collective community actions/ response taken against early marriage.

-. Reduced stigma and discrimination of women living with HIV/ AIDS and increased access of voluntary counseling and testing for HIV/AIDS by the community.

-. Testimonies of changing gender roles and division of labor of household chores and control of household assets.

. Outcome 2: Literacy and Life Skills

- Women attending literacy classes are now more supportive of children to attend school, thus boosting formal education and valuing girls education
- . Outcome 3: Reproductive Health
- Increased sexual and reproductive health seeking behavior and use of health services among adolescent girls and women.
- . Outcome 4: Livelihood
- Improved livelihood opportunities through capacity building and access to credit, resulted in increased assets and reinforced culture of saving and women's self-esteem.

### **Progress in outputs**

Progress in outputs ( accumulative)

- . Social Mobilization and Community Conversation:
  - More than 10,000 community members graduated on CC, from a total of 23,310 mobilized.
  - Around 200 cases of child marriage interrupted by actions taken at community level.
- . Livelihood:
  - More than 75 SACCOs ( Cooperatives) established.
  - Loan re-payment ( on average) around 80-90%
  - More than 24,000 women with skills on IGA, book keeping, and knowledge on saving and credits principles & management. And around 6,200 women engaged in different IGAs.
- . Sexual and Reproductive Health
  - More than 14,600 targeted beneficiaries received contraceptive services ( not accumulative):493 Community health extension workers trained on gender, HIV/Aids and SRH
- . Literacy and Life Skills
  - Supporting access to education and learning of more than 50,000 adolescent girls and women.

### **Measures taken for the sustainability of the joint programme**

1. Harmonization of AWPY4 and Sustainability Strategy Plan: sustainability actions/ activities included and budgeted under AWPY4.
2. Improvement Plan Jan12-Dec13: agreed and formalized Action Plan " live document" including sustainability actions for accountability and implementation assurance.
3. Enhance the advocacy strategy: to encourage uptake of program components by government sector offices and to increase the possibility of additional financial support from other sympathetic Donors.
4. Strengthening the already existing alignment and coordination with the government efforts: one of the strengths of the JP ( MTE report Nov2010 ) is how the institutionalization of the program into the government structures ensures greater ownership and integration of the program activities among the government plans and budget.
5. Under the livelihood intervention: budget allocated to build the capacity of the Cooperative (SACCO) through trainings on management and building a sustainable logistic-structure. Main efforts done for advocacy and lobbying to strengthen the support to the women's SACCO's.

### **Are there difficulties in the implementation?**

Coordination within the Government (s)  
Administrative / Financial

### **What are the causes of these difficulties?**

#### **Briefly describe the current difficulties the Joint Programme is facing**

- 1) Lengthy procurement process at Country level: this specially affects the intervention under reproductive health " procurement of health supplies and equipment" .
- 2) Weak coordination among government IPs -at times- due to over burdening and limited and stretched staff capacity, resulting in challenges to involve some sector bureaus in joint field visits, continuous technical support and participation in PMC meetings.
- 3) Disharmony between funds release and work plan schedule: this has created a cycle of delays that results in rushed implementation, rushed liquidation and work overload.
- 4) Lack of clarity on some interventions: in some districts the "way forward" and approach under the SRH and the Literacy components, is not understood properly and requires close follow up and guidelines.
- 5) Turnover and unexpected salary increase: a new salary policy has been agreed at government level ( Program Implementation Manual PIM, August 2011) and the program staff claims for a salary increase according to this Governments new standards.

#### **Briefly describe the current external difficulties that delay implementation**

Major difficulty is the disharmony between UN fund cycle and countries fiscal calendar.

Another external difficulties:

- Updated new salary policy recently approved by the Government and the UN at Country Level ( Program Implementation Manual PIM, August 2011. According to the new " standards" the program staff is entitled to a salary increase, an unexpected policy that was not planned and not budgeted during the development of LNWB AWPY4.
- New Adult Literacy Program: developed and approved recently by the Government, where the Ministry of Education expect to target adults ( men and women)through an innovative new approach and manual. The already ongoing literacy program activities and tools ( targeting women), need to be harmonized with this initiative.

#### **Explain the actions that are or will be taken to eliminate or mitigate the difficulties**

- 1) The Government has introduced new " procurement procedures" in order to accelerate the provision and delivery of items under the health sector. □
- 2) The Federal technical group will establish parallel meetings and agenda with Sector Bureaus of Education and Health, keeping direct communication with assigned focal persons.
- 3) Already approved at Country Level, to pilot biannual fund release to the program targeted regions, keeping the time frame of quarterly reporting.
- 4) Technical support/guidelines will be provided by UNFPA, through closer follow up an communication for the standardization of the approach under the life skills and literacy activities.
- 5) Harmonization of salary program staff and new policy already in process, after agreement reached at PMC level( federal and regional).
- 6) Introduction of new adult literacy program an tools, already included and budgeted in the AWPY4- targeting LNWB women.

## **2 Inter-Agency Coordination and Delivering as One**

**Is the joint programme still in line with the UNDAF?**

Yes true  
No false

**If not, does the joint programme fit the national strategies?**

Yes  
No

**What types of coordination mechanisms**

Coordination mechanisms:

A) Inter- Agency and Delivery as One:

In the development process of the UNDAF- Ethiopia (2012-2015) joint and harmonized - one voice - participation of the LNWB UN- Agencies ( WFP- UNFPA) in order to assure alignment of the MDG- Gender Joint Program with the coming Development Assistance Framework at Country level ( Outcome 4).  
Involvement and active participation on the bi-monthly coordination meetings, organized and chaired by the Resident Coordinator, with the rest of the MDG- F Joint Programmes.

B) Steering Committees and Technical Groups:

According to MDG-F Implementation guidelines, at this step of the Joint Program implementation coordination system fully set up:

a) National Steering Committee (NSC): at the national level, provides guidance to all the joint programs, particularly in terms of coordination between programs and harmonization of procedures between the Government and the UN.

b) Program Management Committee (PMC): at all levels from federal to local levels, the PMCs are deeply involved in decision making and determine the direction of the program.

Different PMCs have been set up at Regional, District and at the lowest administrative level (sub Kebele), where the Program Management Committees is composed by a technical team, Kebele administrators, the Chairperson of the Local Farmers Association, Chairperson of the Cooperatives and the Chairperson of the Women Association. The Kebele PMC ensures that the program selects and reaches the appropriate beneficiaries.

c) Technical groups: at all levels, provides coordination, technical support and continuous follow up of the implementation and communication among the community, the technical members and PMC.

d) Quarterly Joint field visits: to the regions and targeted districts

e) Experience Sharing.

**Please provide the values for each category of the indicator table below**

Indicators	Baseline	Current Value	Means of verification	Collection methods
------------	----------	---------------	-----------------------	--------------------

Number of managerial practices (financial, procurement, etc) implemented jointly by the UN implementing agencies for MDG-F JPs

Ethiopia gender survey, a study in 7 regions  
Ethiopia young adult survey, a study in 7 regions

Population based survey that took place in 2009 in urban and rural areas of seven regions in Ethiopia. Nearly 10,000 young people aged 12-24 and over 8,000 women aged 15-49 were interviewed, in the areas of reproductive health GBV, Women's rights, migration and livelihood.

Number of joint analytical work (studies, diagnostic) undertaken jointly by UN implementing agencies for MDG-F JPs

Number of joint missions undertaken jointly by UN implementing agencies for MDG-F JPs

### 3 Development Effectiveness: Paris Declaration and Accra Agenda for Action

#### Are Government and other national implementation partners involved in the implementation of activities and the delivery of outputs?

Not Involved      false  
Slightly involved      false  
Fairly involved      false  
Fully involved      true

#### In what kind of decisions and activities is the government involved?

Policy/decision making  
Management: budget  
Management: procurement  
Management: service provision

*Also involved in:*

- *Annual Work Plan: Performance Review and Annual Work Plan Revision, through a consultative process at all levels ( district- region- federal) involving the UN Agencies.*
- *Personnel recruitment: Government focal program staff involved in the recruitment process and final decision.*

#### Who leads and/or chair the PMC?

- . At Federal level: Ministry of Women, Children and Youth Affairs ( MoWCYA)
- . At Regional level: Bureau of Women, Children and Youth Affairs (BoWCYA)
- . At District level: the office of Women, Children and Youth Affairs with the Administrator Officer ( WoWCYA)



**Number of meetings with PMC chair**

For the Period: July 2011- December 2011

PMC Federal: 1 meeting (December 2011).  
PMC Regional: 3 (cumulative of both regions)  
PMC district: Monthly in 11 districts

\* Additional;

- AWP Meetings: Performance AWPY3 and review AWPY4 ( August- September), participation of some PMC members and UN.
- Experienced Sharing Meeting ( 20-23 December), with the attendance of stakeholders and representatives/members of the PMCs from both regions.

**Is civil society involved in the implementation of activities and the delivery of outputs?**

Not involved            false  
Slightly involved        false  
Fairly involved            true  
Fully involved            false

**In what kind of decisions and activities is the civil society involved?**

Policy/decision making  
Management: other, specify

- . *Women Association at district level: involved and participating in decision making forums and events related to the social mobilization intervention.*
- . *Health Extension Workers: engaged in decision making and review meetings under intervention of Sexual and Reproductive Health activities.*
- . *Volunteers/ educators: provide technical support and in some districts implementation of activities under the literacy and life skills intervention.*
- . *Kebele management: at village level the local management team, in charge of selecting the beneficiaries among the community, as well as, follow up of achievements and challenges in the implementation to be reported to Women's Affairs Office through programme staff.*

**Are the citizens involved in the implementation of activities and the delivery of outputs?**

Not involved            false  
Slightly involved        false  
Fairly involved            true  
Fully involved            false

**In what kind of decisions and activities are the citizens involved?**

Policy/decision making  
Management: service provision

**Where is the joint programme management unit seated?**

National Government

Local Government

### Current situation

The program manifests elements of strong coordination, with involvement of several levels of administration and large groups of stakeholders. For Example; PMC, technical committees, cooperatives, component groups at community level and groups of trainees. The leadership and coordination among UN agencies in their relationship with government partners is appreciated. Both UNFPA and WFP have approached the partners as one and their role is clearly defined.

## 4 Communication and Advocacy

**Has the JP articulated an advocacy & communication strategy that helps advance its policy objectives and development outcomes?**

Yes true  
No false

**Please provide a brief explanation of the objectives, key elements and target audience of this strategy**

Based on the Implementation Guidelines provided by the MDG Achievement Fund , has been developed and agreed with stakeholders and implementing partners, an Advocacy

and Communication strategy ( with the corresponding budget allocated) , in synergy with the MDG goals and the specific LNWB objectives. This strategy pillars:

- . Target: focus on rural population where the programme is being implemented
- . Media: radio programmes, newspaper, IEC/BCC material.
- . Advocacy: at institutional level, UN and International Community.

New: Development and dissemination of Community Conversation Manual improved, including Gender Based Violence and gender approach to HIV/ Aids, leadership and SRH.

**What concrete gains are the advocacy and communication efforts outlined in the JP and/or national strategy contributing towards achieving?**

Increased awareness on MDG related issues amongst citizens and governments

Increased dialogue among citizens, civil society, local national government in relation to development policy and practice

Media outreach and advocacy

**What is the number and type of partnerships that have been established amongst different sectors of society to promote the achievement of the MDGs and related goals?**

Faith-based organizations	1
Social networks/coalitions	1
Local citizen groups	
Private sector	
Academic institutions	
Media groups and journalist	1

Other

**What outreach activities do the programme implement to ensure that local citizens have adequate access to information on the programme and opportunities to actively participate?**

Focus groups discussions

Household surveys

Use of local communication mediums such radio, theatre groups, newspapers

Capacity building/trainings

## **Section III: Millenium Development Goals**

### **Millenium Development Goals**

#### **Additional Narrative Comments**

**Please provide any relevant information and contributions of the programme to de MDGs, whether at national or local level**

**Please provide other comments you would like to communicate to the MDG-F Secretariat**

Data analysis:

- Due to reviewed and improved Monitoring and Evaluation Framework and new MIS in place, the data compiled by the program staff needs to be cross check according to this recently established system. Special attention to the criteria used to get data under the Reproductive Health interventions that should be aligned with the reviewed indicators ( more specific). In the next field visit MoWCYA and UN Agencies to asses and verify alignment with MIS.
- As per cross checked budget under the Livelihood component ( doc. Results Framework), the final budget for Y2=\$ 1,479, 804, Y4=\$ 1,657,803 ( updated in January). The document attached is the information processed until Dec2011.

## Section IV: General Thematic Indicators

### 1 Mainstreaming gender in policy making and improving the legal system to recognize and guarantee the rights of women

#### 1.1 Number of laws, policies or plans supported by the programme that explicitly address gender based discrimination and promote gender equality and women's empowerment.

##### Policies

No. National	N/A
No. Local	N/A

##### Laws

No. National	N/A
No. Local	N/A

##### Plans

No. National	N/A
No. Local	N/A

#### 1.2 Are they in line with international commitments adopted by the country (particularly CEDAW)? Please, specify:

Please briefly provide some contextual information on the law, policy or plan and the country/municipality where is going to be implemented (base line, stage of development and approval, potential impact of the policy)

N/A

#### 1.3 Sector in which the law, policy or plan focuses:

N/A

**Comments**

N/A

**1.4 Government Budget allocated to gender equality policies or programmes before the implementation of the Joint Programme**

**National Budget**

Total

**Local Budget**

Total

**1.5 % variation in the Government's budget devoted to gender equality policies or programmes from the beginning of the joint programme to present time**

**National Budget**

% Overall

% Triggered by the Joint Programme

**Local Budget**

% Overall

% Triggered by the Joint Programme

**1.6 Number of citizens and/or institutions the law policy or plan directly affect**

Citizens

National Public Institutions

Local Public Institutions

Private Institutions

## 1.7 Number of institutions, civil servants and citizens trained with the support of the Joint Programme to take informed decisions on gender related issues

### Public institutions

Total

### Private Sector Institutions

Total

### Civil Servants

Total

Women

Men

### Citizens

Total 71,262

Women 71,262

Men

## 2 Improving participation of women in economic life and public decision making of their community and/or country

### Budget

National budget

Total Local budget

### Number of women empowered and/or trained with the support of the joint programme who gained access and/or improved their economic rights

No. women

No. urban

% Ethnic group

Specify

### Number of women empowered and/or trained with the support of the joint programme who improved their income

### Type of improvements generated by the Joint Programme on the beneficiaries' wellbeing through the improvement of economic rights/income generation

Health and/or sexual and reproductive health

Food security and nutrition

Reduce vulnerability  
Education

**2.1 Number of women empowered and/or trained with the support of the joint programme who gained access and/or improved their economic rights**

Women  
Urban  
Ethnic group  
Rural

**2.2 Number of women empowered and/or trained with the support of the joint programme who improved their income**

Women  
Urban  
Ethnic Group  
Rural

**2.3 Type of improvements generated by the Joint Programme on the beneficiaries' wellbeing through the improvement of economic rights/income generation**

Food security and nutrition  
Reduce vulnerability  
Education

**Comments**

**2.4 Number of women who, gained access to public decision making with the support of the joint programme**



Total number  
Urban  
% Ethnic group  
National  
% Local

### **3 Decreasing the level of violence against women/girls and improving support provided to victims of violence**

#### **3.1 Number of women/girls with access to prevention and protection services (e.g. shelter, medical or legal support, etc), anti-discrimination and/or reproductive health care through the support of the joint programme**

Total 82,978  
Women 82,978  
Girls  
Urban  
Rural/indigenous

#### **3.2 Number of women/girls who have used anti-violence services (e.g. shelter, medical or legal support, etc), anti-discrimination and/or reproductive health care with the support of the joint programme**

Total 23,610  
Women 23,610  
Girls  
Urban  
Rural/Indigenous

### 3.3 Variation (%) of gender based violence cases reported to the police from the beginning of the Joint Programme to present time

## 4 Awareness rising on gender equality issues and enabling an environment for women exercising their rights

### 4.1 Number and type of partners targeted sensitized on gender related issues

Civil servants

*Number and type of partners targeted sensitized:*

*Community Conversation has stimulated community dialogue and consciousness on HIV & AIDS, Reproductive Health and gender issues. This community groups formed by all categories of people ( young and elderly, men and women, religious leaders, traditional healers, clan leaders, representatives of local administration, girls and boys..) engaged on regular CC sessions held discussions on Harmful Traditional Practices such as Female Genital Mutilation/ Cutting , child marriage and GBV.*

*Community Members : Total 23,310 ( 60%F-40%M)*

Private institutions

*Number and type of partners targeted sensitized:*

*Community Conversation has stimulated community dialogue and consciousness on HIV & AIDS, Reproductive Health and gender issues. This community groups formed by all categories of people ( young and elderly, men and women, religious leaders, traditional healers, clan leaders, representatives of local administration, girls and boys..) engaged on regular CC sessions held discussions on Harmful Traditional Practices such as Female Genital Mutilation/ Cutting , child marriage and GBV.*

*Community Members : Total 23,310 ( 60%F-40%M)*

Community organizations

*Number and type of partners targeted sensitized:*

*Community Conversation has stimulated community dialogue and consciousness on HIV & AIDS, Reproductive Health and gender issues. This community groups formed by all categories of people ( young and elderly, men and women, religious leaders, traditional healers, clan leaders, representatives of local administration, girls and boys..) engaged on regular CC sessions held discussions on Harmful Traditional Practices such as Female Genital Mutilation/ Cutting , child marriage and GBV.*

*Community Members : Total 23,310 ( 60%F-40%M)*

Religious leaders

*Number and type of partners targeted sensitized:*

*Community Conversation has stimulated community dialogue and consciousness on HIV & AIDS, Reproductive Health and gender issues. This community groups formed by all categories of people ( young and elderly, men and women, religious leaders, traditional healers, clan leaders, representatives of local administration, girls and boys..) engaged on regular CC sessions held discussions on Harmful Traditional Practices such as Female Genital Mutilation/ Cutting , child marriage and GBV.*



*Community Members : Total 23,310 ( 60%F-40%M)*

*Other, specify*

*Number and type of partners targeted sensitized:*

*Community Conversation has stimulated community dialogue and consciousness on HIV & AIDS, Reproductive Health and gender issues. This community groups formed by all categories of people ( young and elderly, men and women, religious leaders, traditional healers, clan leaders, representatives of local administration, girls and boys..) engaged on regular CC sessions held discussions on Harmful Traditional Practices such as Female Genital Mutilation/ Cutting , child marriage and GBV.*

*Community Members : Total 23,310 ( 60%F-40%M)*

No. National Level

No. Local Level

#### **4.2 Indicate the type of media /awareness raising action used**

Radio

Community based activities

Schools

Peer to peer initiatives

Leave No Woman Behind  
MDG- Gender Joint Program  
M&E Frame Work

**July/2012**

Prepared by: Beletshcahew Aynalem

MIS Consultant

## **Acronyms**

CC	Community Conversation
DA	Development Agents
FGD	Focus Group Discussion
HEW	Health Extension Workers
IPs	Implementing Partners
JP	Joint Program
KA	Kebele Administration
KII	Key Informant Interview
LNWB	Leave No Woman Behind
M&E	Monitoring and Evaluation
MDGF	Millennium Development Goals Achievement Fund
MIS	Management Information System
MTR	Mid Term Review
PMC	Program Management Committee
PMT	Program Management Team
UNCT	United Nations Country Team
UNDP	United Nations Development Program
UNFPA	United Nations Population Fund
WFP	World Food Progra

## 1. Program Profile

Title of the programme	Leave No Woman Behind Joint Program
Duration	36 months
Start	February 2009
End	February 2012- extension request, to end December 2012
Donor	Millennium Development Goals Achievement Fund (MDGF), through a partnership agreement with Government of Spain and UNDP
Total budget	\$ 7.5 Million
Implementation area	Amhara and Tigray regions of Ethiopia
Target Population	1,640,963 in Amhara and 580,081 in Tigray,
UN partners	UNFPA and WFP
Implementing Partners	Line Ministries offices: Women, Children & Youth Affairs, Finance and Economic Development, Agriculture, and Cooperatives, Health, and Education
M&E	Baseline survey was done MTR was done (November 2010)

## **Background**

Leave No Woman behind Joint program (LNWB JP) is supported by the Millennium Development Goals Achievement Fund (MDG-F), an international cooperation mechanism aiming at accelerating progress on the Millennium Development Goals (MDGs) worldwide, while supporting UN reform efforts at the country level. The fund was established in December 2006, with a generous contribution of €528 million Euros (\$US710M) from the Spanish Government to the United Nations system.

The LNWB JP under this Gender window, was designed to Achieve the Millennium Development Goals in particular MDG 1- Poverty Reduction and MDG 3 Gender Equality and women's Empowerment, through 4 core program components such Social mobilization, Literacy and Life skill, Reproductive Health (RH), and Livelihood. The preliminary work for the program including base line survey was done by Population Council in both *implementing* regions.

The program is implemented in 5 woredas of Tigray (GuloMaheda, Hintalowajerat, SamreSeharti, TankuaAbergale, and NaiderAdet) and 6 woredas of Amhara (West and East Estie, Dembia, Sekota, North Achefor, and Sekela). The total target population is 1,640,963 (580,081 in Tigray and 1,060,882 in Amhara).

On October 2010 a Mid Term Review (MTR) was carried over by an independent consultant (as per the MDG Secretariat Implementation Guidelines July 2009) to examine the relevance, effectiveness, efficiency, impact and the sustainability of the JP.

## **About this Frame Work**

This consultancy was undertaken following the Mid Term Review recommendations to improve the Monitoring Information system of the program and to step-up monitoring and recording of outcome level program results. The development of the framework followed a participatory approach. The consultancy encompassed in-depth discussion with the key Implementing Partners (IPs), UNFPA and WFP, district and regional coordinators in the two program implementation regions.

A mixture of purposive and Convenience sampling was used to come up with the respondents in the different woredas reached by the JP to do an information management, and reporting system mapping for both regions.

Three woredas (Hintalowajerat, SamerSeharti, and NaiderAdet) from Tigray region and four woredas (North Achefor, Sekela, West Estie, and Sekota) from Amhara Region (those woredas which are included in the preliminary field visit are excluded) were targeted for the M&E mapping process. To decrease the probability of bias and to gain a clear picture, respondents who were selected are the direct implementers of program intervention. In conducting the Information management and reporting system mapping a combination of diverse data collection methods were utilized in collecting data. Some of these data collection methods are key informant interviews, in-depth interviews, focus group discussions, observation, and documentary analysis. A combination of different methods were used to maximize validity and reliability of the information collected through triangulation of responses from the different sides.

Based on the Mapping findings, discussion was held with Federal PTC on the recommendations given and ways to reinforce the M&E system. As the result standardized data collection formats were developed and introduced, Uniform information flow system was reintroduced and capacity building training was provided on Management information system (MIS) and Result Based Management (RBM).

This document is developed out of the mapping findings and the inputs provided by implementing partners during the MIS training.. This framework is structured in a way that guides the M&E system of the LNWBWP Joint program implemented by the support of UNFPA



and WFP. This framework will contribute to setting standards and ensuring consistency in M&E practices among the different partners.

This frame work will be used as a guide by all coordinating and implementing partners at Federal, Regional and Woreda levels based on their respective M&E roles. The framework provides practical guideline so that each responsible stakeholder will have mechanisms to collect data from output up to outcome level.

The frame work includes:

- The joint program M&E plan/framework
- Joint Program Indicators Description
- The role of various stakeholders and the information flow from kebele up to federal level.
- Reporting Formats
- Tips on how to conduct joint monitoring visits.

The JP recognizes that this framework forms an essential component in the day to day operation of the program management process.

## Leave No Woman Behind Joint Program Monitoring and Evaluation Framework

Intervention Logic	Indicators	Means of Verifications	Frequency of data collection	Responsible body
<p>1. <b><u>JP out come</u></b>  <b>Increased promotion and protection of human rights and community empowerment (with special emphasis on adolescent girls and women)</b></p>	<p>% of female circumcision (FGM/C)</p> <p>Baseline:            Amhara = 61.7            Tigray = 41.2</p> <p>Target = 15% reduction</p> <p>% of adolescents' girls married before the age of 18.</p> <p>Baseline:            Amhara= 52.4            Tigray = 21.7</p> <p>Target = 30% reduction</p>	<p>End line survey</p> <p>Annual /Final JP report</p>	<p>End of JP 2012</p> <p>Annual</p>	<p>MOFED/RCO/UNFPA/WFP</p> <p>MOWCYA</p>



Intervention Logic	Indicators	Means of Verifications	Frequency of data collection	Responsible body
<p>1.2. Increased institutional capacity of MoWCYA, BoWCYAs and the district Women Affairs offices</p>	<p>Quality and timelessness of Substantive and Final report</p> <p>Base line= Not to standard</p> <p>Target= Timely and result oriented reports</p> <p>% implementation of recommendations or actions proposed in PTC/PMC meetings and field missions</p> <p>Baseline = 0</p> <p>Target = 90%</p>	<p>Routine report</p>	<p>Every quarter</p>	<p>UNFPA/WFP/MOWCYA at federal level</p> <p>BOWCYA, regional level (Regional JP coordinators)</p> <p>WOWCYA at district level (Woreda JP coordinators)</p>

Intervention Logic	Indicators	Means of Verifications	Frequency of data collection	Responsible body
<p><b><u>2. JP Outcome</u></b></p> <p><b>Regional efforts to strategically address gender disparities in literacy and educational attainment increased.</b></p>	<p>% of Literate women aged 25 - 49</p> <p>Baseline: Amhara = 7.5 Tigray = 11.4 Target = 5% increase</p> <p>School dropout rate in primary education of targeted woredas</p> <p>Baseline: 11.6% Target: 10% reduction</p>	<p>End line survey</p> <p>BOE and WOE Annual records</p> <p>Case study to check literacy training of mothers is having indirect effect on girls drop out/net enrollment rate</p>	<p>End of JP 2012</p> <p>Annually Every quarter</p>	<p>MOFED/RCO/UNFPA/WFP</p> <p>WOWCYA, and WOE at district level</p> <p>Woreda JP coordinators</p>

<p><b><u>JP Output</u></b></p> <p><b><u>2.1 Improved life skills and literacy status of adolescent girls and women</u></b></p>	<p>% of girls and women aged 12 -49 who received life skill education</p> <p>Baseline:  Amhara : 12 – 24 = 18.1%                    15 – 49 = 3.7%  Tigray : 12 – 24 = 70.5 %  Target = 10% increase</p> <p># of targeted adolescent girls and women who graduated from adult literacy and life skills training</p> <p>Baseline = 0</p> <p>Target = 77,853</p> <p># of ABE/adult literacy centers, furnished &amp; equipped</p> <p>Baseline= 0</p> <p>Target = 200</p>	<p>End line survey</p> <p>Educators/CC facilitators records</p> <p>Quarterly woreda reports</p>	<p>End of JP 2012</p> <p>Every Month</p> <p>Every Quarter</p>	<p>MOFED/RCO/UNFPA/WFP</p> <p>WOWCYA, and WOE at district level (Woreda JP coordinators)</p> <p>Woreda education office/ Woreda JP coordinators</p>
--	--	---	---	---

Intervention Logic	Indicators	Means of Verifications	Frequency of data collection	Responsible body
<p><b>3) <u>JP Outcome</u></b></p> <p><b>Improved access to and demand for quality, gender sensitive and integrated reproductive health care, including HIV/AIDS prevention services at all levels</b></p>	<p>% of sexually active women using family planning method Baseline = 27.2 Target = 30% increment</p> <p>% of adolescent girls (15 – 49) and women (25 – 49) who received prenatal care during pregnancy Baseline = 24.5 Target = 30% increment</p> <p>% of women aged 15 to 49 who have ever been counseled and tested for HIV (VHCT)  Baseline : Amhara= 13.4 Tigray = 30.9 Target = 10% increase</p>	<p>End line survey</p> <p>BOH and WHO Annual records</p>	<p>End of JP 2012</p> <p>Annually</p>	<p>MOFED/RCO/UNFPA/WFP</p> <p>WOWCYA/WOH at district level (Woreda JP coordinators)</p>

Intervention Logic	Indicators	Means of Verifications	Frequency of data collection	Responsible body
<p><b><u>JP Outputs</u></b></p> <p>3.1 Strengthened women and girls' right claiming capacity for information and services on sexual and reproductive health, HIV/AIDS and addressing GBV</p>	<p>% Of women and adolescent girls who know at least one family planning method Baseline = 92.4 Target = 10% increase</p> <p># of adolescent girls and women who have accessed health posts and health centers for maternal health services Baseline =0 Target = 92,540</p>	<p>End line survey</p> <p>HEW Records</p> <p>HEW records</p>	<p>End of JP 2012</p> <p>Every Month</p> <p>Every Month</p>	<p>MOFED/RCO/UNFPA/WFP</p> <p>WOWCYA/WOH at district level (Wored JP coordinators)</p>



Intervention Logic	Indicators	Means of Verifications	Frequency of data collection	Responsible body
<p>3.2 Strengthened institutional capacity of health facilities for effective and efficient sexual and reproductive health service provisions</p>	<p># of health extension workers and health facility staff trained on RH, HIV and Gender issues;</p> <p>Baseline = 0 Target = 493</p> <p># of health facilities equipped with Emnoc and other health supplies by the JP</p> <p>Baseline = 0 Target = 103</p>	<p>Routine Report</p>	<p>Every Quarter</p> <p>Every quarter</p>	<p>BOWCYA/BOH (Regional coordinator)</p> <p>WOWCYA/WOH at district level (Wored JP coordinators)</p>

<p><b>4) JP Outcome</b></p> <p><b>Target women and their family members enjoy improved and sustainable livelihoods with increased income, improved food security; and enhanced resilience to shocks</b></p>	<p>% of target households with increased income as compared to end of 2008.</p> <p>Baseline = to be collected from agriculture development agents records</p> <p>Target = 50% increment</p> <p>% of target households with increased assets as compared to end of 2008</p> <p>Baseline = to be collected from agriculture development agents records</p> <p>Target = 70% increment</p> <p>Proportion of women saving regularly</p> <p>Baseline: 0</p> <p>Target: 90%</p>	<p>End line survey</p> <p>Base line and end line collected by DAs/Cooperative agents</p> <p>Tracking records on the beneficiaries income asset and income collected by</p> <p>DAs/Cooperative agents</p> <p>Stories of change</p>	<p>End of JP 2012</p> <p>Every quarter</p>	<p>MOFED/RCO/UNFPA/WFP</p> <p>WOARD/DAs at district level (woreda JP coordinators)</p>
---	--	---	--	--

Intervention Logic	Indicators	Means of Verifications	Frequency of data collection	Responsible body
<p><b><u>JP Output</u></b></p> <p>4.1. Improved knowledge of adolescent girls and women on income generating activities</p>	<p>#of adolescent girls and women trained as peer educators in livelihood skills</p> <p>Baseline = 0 Target =10,000</p> <p>#of adolescent girls and women reached by peer educators and get exposure about business development</p> <p>Baseline = 0 Target = 100,000</p>	<p>DAs training records</p>	<p>Every quarter (as the training happen)</p>	<p>WOARD/DAs at district level ( woreda JP coordinators)</p>

<p>4.2. Improved skills of women to create and manage physical, human and social assets</p>	<p># of women who are skilled in credit &amp; saving principles (book keeping, business plan preparation, marketing and leadership)</p> <p>Baseline = 0 Target = 8,000</p> <p># of women engaged in income generating activities (IGA) by type of IGA</p> <p>Baseline = 0 Target = 8,000</p>	<p>Cooperative agents training records DAs records</p> <p>Cooperative agents and SACCOs records</p>	<p>Every quarter</p>	<p>WOC/ cooperative agents at district level</p> <p>WOARD/DA WOC/ cooperative agents at district level</p>
---	--	---	----------------------	--

Intervention Logic	Indicators	Means of Verifications	Frequency of data collection	Responsible body
4.3 Improved access of target women to functioning and financial saving and credit service	<p># of women who are accessing saving and credit services</p> <p>Baseline: 0</p> <p>Target: 8,000</p> <p>Credit recovery rates</p> <p>Baseline: 0</p> <p>Target: 80%</p>	SACCOs records	Every quarter	WOC/cooperative agent at district level

## Joint Program Indicators Description

Intervention Logic	Indicators	Definition
<p><b><u>JP out come</u></b>  <b>Increased promotion and protection of human rights and community empowerment (with special emphasis on adolescent girls and women)</b></p>	<p>% of HH who have circumcised their daughters/ prevalence of FGM</p> <p>% of married adolescents girls less than 18 years.</p>	<p><b>Numerator:</b> Number of respondents who have circumcised their daughters</p> <p><b>Denominator:</b> Number of all respondents.</p> <p><b>Numerator:</b> Number of respondents less than 18 years who are married disaggregated by sex</p> <p><b>Denominator:</b> Number of all respondents less than 18 years disaggregated by sex</p>
<p><b><u>JP Outputs</u></b></p> <p>1. 1. Increased community capacities, particularly vulnerable groups' such as women and girls, to participate in decisions that positively affect gender equality</p>	<p>% of girls (12-24) and women (25 – 49) opposing FGM/C</p> <p># of early marriage case reported to CC facilitators/WOCYA/Justice office</p> <p># of community members reached through resonance effect</p>	<p><b>Numerator:</b> Number of girls and women opposing FGM/C</p> <p><b>Denominator:</b> Number of all respondent girls and women</p> <p>The number of Early marriage cases reported to CC facilitators and stopped. Early marriage cases reported to WOWA and justice office.</p> <p>The number of community members reached through community members regularly in engaged in CC disaggregated by sex and age. ( through resonance</p>

		effect)
1.2. Increased institutional capacity of MoWCYA, BoWCYAs and the district Women Affairs offices	# Quality and timelines of substantive and financial reports  # % implementation of recommendations or actions proposed in PTC/PMC meetings and field missions	
<b><u>.JP Outcome</u></b> <b>Regional efforts to strategically address gender disparities in literacy and educational attainment, sexual and reproductive health services and GBV are strengthened</b>	Level of current literacy among women aged 25 - 49  School dropout rate of targeted woredas	

<p><b><u>JP Output</u></b></p> <p>2 .1 Improved life skills and literacy status of adolescent girls and women</p>	<p>% of girls and women aged 12 -49 who received life skill education</p> <p># of targeted adolescent girls and women who graduated from adult literacy and life skills training</p> <p># of Alternative Education Centers and NFE centers furnished and equipped</p>	<p>The percentage of women aged 12 – 49 who have ever received life skill education</p> <p>The number of a targeted adolescent girls and women who attended literacy and life skill education and graduated being able to read and write.</p> <p>The number of alternative basic education centers rehabilitated or furnished with the support of the program</p>
<p><b><u>3) JP Outcome</u></b></p> <p><b>Improved access to and demand for quality, gender sensitive and integrated reproductive health care, including HIV/AIDS prevention services at all levels</b></p>	<p>% of sexually active women using family planning method</p> <p>% of adolescent girls (15 – 25)and women (25 – 49) who received prenatal care during pregnancy</p> <p>% of adolescents girls and women (15 - 49) who have ever been counseled and tested for HIV/VHCT</p>	<p><b>Numerator:</b> Number of respondent women who ever used contraceptive methods</p> <p><b>Denominator:</b> Number of all respondents</p> <p><b>Numerator:</b> Number of respondents aged 15-49 years who received prenatal care during last pregnancy</p> <p><b>Denominator:</b> Number of all pregnancy respondents aged 15-49</p> <p><b>Numerator:</b> Number of respondents aged 15-49 years who have received voluntary or health care provider initiated HIV counseling and testing</p> <p><b>Denominator:</b> Number of all women respondents between 15-49 years of age</p>
<p><b><u>JP Outputs</u></b></p> <p>3.1 Strengthened women and girls’ right</p>	<p># Of sexually active adolescent girls (15 - 24) and woman (25- 49) who knows of at</p>	<p><b>Numerator:</b> Number of respondents girls and women who know of at least family planning method</p>



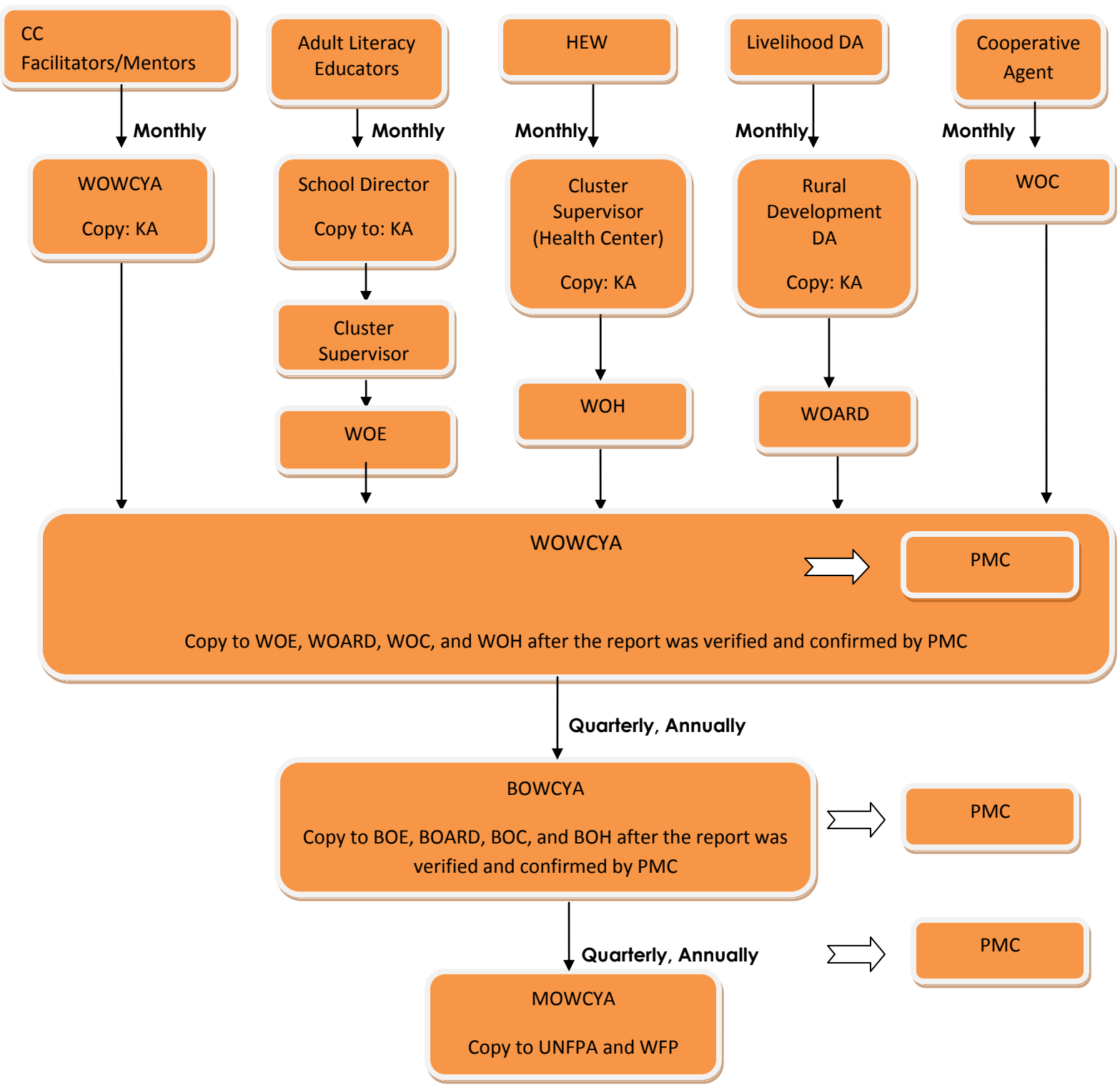
<p>claiming capacity information and services for sexual and reproductive health, HIV/AIDS and addressing GBV</p>	<p>least one family planning method.</p> <p># of adolescent girls and women who have accessed health post or health center for maternal health and basic SRH services</p>	<p><b>Denominator:</b> Number of all respondent girls and women</p> <p>The number of adolescent girls and women who accessed basic sexual reproductive services like ANC, PNC, VCT, PMTCT, FP, and skilled delivery.</p>
<p>3.2 Strengthened institutional capacity of health facilities for effective and efficient sexual and reproductive health service provisions</p>	<p># of health extension workers and health facility staff trained on RH, HIV and Gender issues;</p> <p># and type of equipment and commodities procured and delivered to health facilities</p>	<p>The number of health extension workers and health facility staff trained on Reproductive health, HIV/AIDS, and Gender friendly service approach.</p> <p>The type and number of equipment and commodities procured and delivered to health facilities.</p>
<p><b>4) JP Outcome</b></p> <p><b>Target women and their family members enjoy improved and sustainable livelihoods with increased income, improved food security; and enhanced resilience to shocks</b></p>	<p>% of target households resulting in increased income as compared to end of 2008.</p> <p>% of target households resulting in increased assets as compared to end of 2008</p>	<p><b>Numerator:</b> The number of targeted households resulting an increased in income</p> <p><b>Denominator:</b> The number of targeted Households.</p> <p><b>Numerator:</b> The number of targeted households resulting an increased in asset</p> <p><b>Denominator:</b> The number of targeted Households.</p>

	Proportion of women saving regularly as compared to end of 2008	<p><b>Numerator:</b> No. of women from the targeted households saving regularly</p> <p><b>Denominator:</b> The number of total targeted households</p>
<p><b><u>JP Output</u></b></p> <p>4.1. Improved knowledge of adolescent girls and women on income generating activities</p>	<p>#of adolescent girls and women trained as peer educators in livelihood skills. (IGA)</p> <p>#of adolescent girls and women reached by peer educators and learned about principles of income generating activities.</p>	<p>The number of adolescent girls (12 – 24) and women (24- 49) trained in principles of income generating activities. This is referring to the general IGA training (Introduction to IGA)</p> <p>The number of adolescent girls and women reached by those who are trained by the DAs. (Through 1-9 system).</p>
4.2. Improved skills of women to create and manage physical, human and social assets	<p># of women who are trained in credit &amp; saving principles, book keeping, business plan preparation, marketing and leadership</p> <p>#of women trained in specific IGA package</p> <p># of women engaged in income generating activities (IGA) by type of IGA</p>	<p>The number of women trained in specific income generating activity package such as animal rearing, dairy production horticulture, petty trade, and etc</p> <p>The number of women engaged in income generating</p>

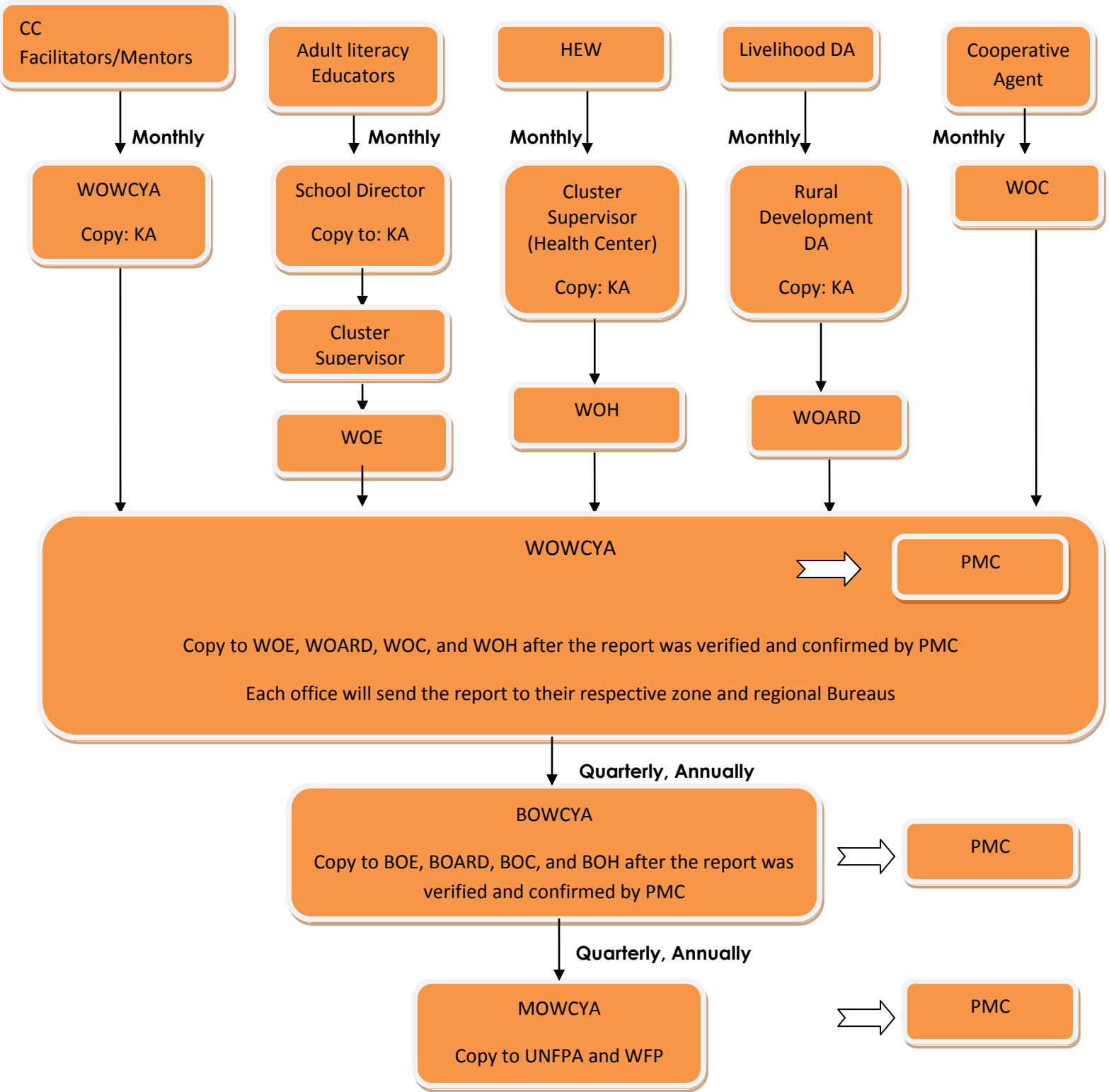
		activities and the type of IGA package
4.3 Improved access of target women to functioning and financial saving and credit service	# of women who have access to saving and credit service  Loan repayment rate	The number of women who make use of LNWB credit service and able to save  <b>Numerator:</b> Amount of total loan repaid  <b>Denominator:</b> Amount of total loan disbursed and already due for repayment

# Information Flow and reporting time frame

## Tigray



**Amhara**



## Data Collection Formats

Leave NO Women Behind Joint Program (LNWB JP)  
Community conversation participants Registration Format

Region: \_\_\_\_\_ Kebele: \_\_\_\_\_  
Woreda: \_\_\_\_\_ Name of CC site: \_\_\_\_\_

S/No	Name of the participants	Age	Sex	Marital status			Family size	Educational status	Village	Social Role	Do you involve in other parts of the LNWB JP program	If yes Specfiy	Remark
				Single	Married	Separated/divorced/widow					Yes/No		

Prepared by: \_\_\_\_\_  
Date: \_\_\_\_\_

Confirmed by : \_\_\_\_\_  
Date: \_\_\_\_\_

**Leave NO Women Behind Joint Program (LNWB JP)  
Community Conversation Reporting Format**

**Region:** \_\_\_\_\_ **Kebele:** \_\_\_\_\_

**Woreda:** \_\_\_\_\_ **Name of CC site:** \_\_\_\_\_

**Date:** \_\_\_\_\_ **Next CC date:** \_\_\_\_\_

**Number of participants: Male:** \_\_\_\_\_ **Female:** \_\_\_\_\_ **Total:** \_\_\_\_\_

**CC session:** \_\_\_\_\_

**Name of the facilitator:** \_\_\_\_\_

**Discussion Topics:** \_\_\_\_\_  
\_\_\_\_\_  
\_\_\_\_\_  
\_\_\_\_\_

**Issues raised during the discussion:** \_\_\_\_\_  
\_\_\_\_\_  
\_\_\_\_\_  
\_\_\_\_\_

**Consensus reached:** \_\_\_\_\_  
\_\_\_\_\_  
\_\_\_\_\_

**CC duration time:** \_\_\_\_\_

**Action taken to reach 1-10:** \_\_\_\_\_

**Changes Observed:**

\* On HTP ( Like FGM/C , early marriage case reported to cc facilitators and stopped, or case reported to Kebele administration)

---

---

---

\* On VCT ( # of participants received VCT)

**T0tal:** \_\_\_\_\_ **Male :** \_\_\_\_\_ **Female:** \_\_\_\_\_

**Challenges:** \_\_\_\_\_

---

---

**Solutions taken:** \_\_\_\_\_

---

Prepared by: \_\_\_\_\_

Confirmed by : \_\_\_\_\_

Date: \_\_\_\_\_

Date: \_\_\_\_\_



**Leave NO Women Behind Joint Program (LNWB JP)**  
**Community Conversation 1-10 effect Reporting Format**

Region: \_\_\_\_\_

Kebele: \_\_\_\_\_

Woreda: \_\_\_\_\_

Name of CC site: \_\_\_\_\_

Date: \_\_\_\_\_

Name of the facilitator: \_\_\_\_\_

S/No	Name of the regular CC participants	# of the pepole reached through 1-10 effect	The pepole reached through 1 - 10 effect						
			Name	Age	Sex	Family size	Martial status	Village	Topics discussed

prepared by: \_\_\_\_\_

Confirmed by: \_\_\_\_\_

Date: \_\_\_\_\_

Date: \_\_\_\_\_

**Leave No women Behind Joint Program (LNWB JP)**

**CC Facilitators profile**

Region: \_\_\_\_\_ Woreda: \_\_\_\_\_

CC site: \_\_\_\_\_

Date: \_\_\_\_\_

S/No	Name	Educational Status	Village	Types of training taken	Years of experience	Starting date	End date

Prepared by: \_\_\_\_\_

Date : \_\_\_\_\_

Confirmed by: \_\_\_\_\_

Date: \_\_\_\_\_

**Leave No Women Behind Joint Program (LNWB JP)**

**Life skill and adult education registration from**

**Region:** \_\_\_\_\_

**Woreda:** \_\_\_\_\_

**Kebele:** \_\_\_\_\_

**Education Center:** \_\_\_\_\_

**Month:** \_\_\_\_\_

**Year:** \_\_\_\_\_ **Date:** \_\_\_\_\_

S/No	Name of students	Age	Education status	Family size	Childern Education status		Martial status			Social role	Do you involve in other parts of the LNWB JP program	If yes Specfiy	Remark
					With in school	Out of school	Single	Married	Separated /divorced/ widow		Yes/No		

Prepared by: \_\_\_\_\_

Confirmed by: \_\_\_\_\_

Date : \_\_\_\_\_

Date: \_\_\_\_\_



**Leave No Women Behind Joint Program (LNWB JP)**

**Life skill and adult education reporting format**

**Region:** \_\_\_\_\_ **Woreda:** \_\_\_\_\_

**Kebele:** \_\_\_\_\_ **Education Center:** \_\_\_\_\_

**Name of the education center:** \_\_\_\_\_

**Date:** \_\_\_\_\_

**Attendance:**

Total Number of women participants registered	# of women attended 4 times	# of women attended 3 time	# of women attended 2 time	# of women attended 1 times

Teaching content: \_\_\_\_\_

Changes observed: (Like mothers started supporting their children education, be able to calculate their income, start putting their signature etc)

**To be filled at the time of graduation, like every three monthes? Or is tl**

S/No	Name	Able to write	Able to read	putting signature	Started sending childrent to School	Abel to Calculate income	graduated

\_\_\_\_\_  
 \_\_\_\_\_  
 \_\_\_\_\_

Challenges: \_\_\_\_\_  
\_\_\_\_\_  
\_\_\_\_\_

Solution taken: \_\_\_\_\_  
\_\_\_\_\_

Prepared by: \_\_\_\_\_  
Date : \_\_\_\_\_

Confirmed by: \_\_\_\_\_  
Date: \_\_\_\_\_

**Leave No women Behind Joint Program (LNWB JP)**  
**Adult literacy and life skill Educators profile**

Region: \_\_\_\_\_ Woreda: \_\_\_\_\_

Education Center: \_\_\_\_\_

Date: \_\_\_\_\_

S/No	Name	Educational Status	Village	Types of training taken	Years of experience	Starting date	End date

Prepared by: \_\_\_\_\_

Date : \_\_\_\_\_

Confirmed by: \_\_\_\_\_

Date: \_\_\_\_\_

**Leave NO Women Behind Joint Program (LNWB JP)**  
**Sensitization and Mobilization Activities Reporting Format**

**Region:** \_\_\_\_\_ **Woreda:** \_\_\_\_\_

**Kebele:** \_\_\_\_\_

**Name of the health post:** \_\_\_\_\_ **Name of the Health Center:** \_\_\_\_\_

**Date:** \_\_\_\_\_

Number of Participants:

adolescent girls : \_\_\_\_\_ women: \_\_\_\_\_ Total: \_\_\_\_\_

Discussion topics: \_\_\_\_\_

---

---

---

---

Issues raised/question raised: \_\_\_\_\_

---

---

---

---



Consensus reached: \_\_\_\_\_  
\_\_\_\_\_  
\_\_\_\_\_  
\_\_\_\_\_

From those discussion participants how many accessed

ANC: \_\_\_\_\_ PNC: \_\_\_\_\_  
FP: \_\_\_\_\_ Skilled delivery: \_\_\_\_\_  
VCT: \_\_\_\_\_ PMTCT: \_\_\_\_\_

Health post beneficiaries accessed

ANC: \_\_\_\_\_ PNC: \_\_\_\_\_  
FP: \_\_\_\_\_ safe and clean delivery: \_\_\_\_\_  
VCT: \_\_\_\_\_ PMTCT: \_\_\_\_\_  
PICT (provider initiative VCT): \_\_\_\_\_

The number and type of Medicines procured and delivered to health post/health center by LNWB JP

**Health Post**

- 1. Name of the medicine: \_\_\_\_\_ Quantity: \_\_\_\_\_
- 2. Name of the medicine: \_\_\_\_\_ Quantity: \_\_\_\_\_
- 3. Name of the medicine: \_\_\_\_\_ Quantity: \_\_\_\_\_

**Health Center**

- 1. Name of the medicine: \_\_\_\_\_ Quantity: \_\_\_\_\_
- 2. Name of the medicine: \_\_\_\_\_ Quantity: \_\_\_\_\_
- 3. Name of the medicine: \_\_\_\_\_ Quantity: \_\_\_\_\_

The number and type of equipment procured and delivered to health post/health Center by LNWB JP

**Health Post**

- 1. Name of the equipment: \_\_\_\_\_ Quantity: \_\_\_\_\_
- 2. Name of the equipment: \_\_\_\_\_ Quantity: \_\_\_\_\_
- 3. Name of the equipment: \_\_\_\_\_ Quantity: \_\_\_\_\_

**Health Center**

- 1. Name of the equipment: \_\_\_\_\_ Quantity: \_\_\_\_\_
- 2. Name of the equipment: \_\_\_\_\_ Quantity: \_\_\_\_\_
- 3. Name of the equipment: \_\_\_\_\_ Quantity: \_\_\_\_\_

Prepared By: \_\_\_\_\_

Date: \_\_\_\_\_

Confirmed by: \_\_\_\_\_

Date: \_\_\_\_\_

**Leave No Women Behind Joint Program (LNWB JP)**

**Baseline data ( profile ) collection format for women who have access credit service**

**Region:** \_\_\_\_\_

**Woreda:** \_\_\_\_\_

**Kebele:** \_\_\_\_\_

**Name of SACCO:** \_\_\_\_\_

S/No	Name of the beneficiary	Age	Village	Marital status (use Code)	Educationa Status	Family size	Do you involve in other parts of the LNWB JP program	If yes Specfiy	Relationship to the HH head (use code)	Occupation (use code)	Disabled? Yes/No	Yearly Income before LNWB (ETB)	Major Income Source (use code)
							Yes/No						

**Marital status:**

1= single      2= Divorced

3= separated    4= woidowed

**Relationship to the head of the HH**

1= self                      4= Grand daughter

2= Daughter                5= employer/domestic worker

3= spouse                  6= other (specfiy)

**Occupation:**

1= Farmer/livestock rearing      2= Fisherman

3= Occasional wage labor          4= Regular waged labor

5= Government worker              6= Carpenter

7= Petty trader                        8= Housewife/househusban

9= Retired                                10= Unemploye d

11= Incapacitated by illness        12= other (specfiy)

**Income Source:**

1= Own crop      2= livestock

3= food aid      4= Wage labour

5= Petty trade    6= Crafts

7= Remittance and gifts      8= Charcoal/firewood

9= Sale of beverage and foods    10= other

**Assets before LNWB**

Land (ha)	# of goats	# of sheep	# of cows	# of oxen	# of donkey	# of horse	# of mule	# of heifer	# of calf	# of chicken	# of beehive	Types of of beehive	# of improved store/storage

Type of house (Use Code)	# of hand-dug well with pump	# of carts pulled by horse/donkey	# of agricultural tools	Wood Loat	# of sewing machine	# of radio	type of telephone	Cash at hand	Total Asset in birr	others (specfiy)

<u>Type of the house</u>	<u>Types of of beehive</u>
1=Hut/touch roof	1= Modern
2=colligated roof	2= Tradational
3=other	

Prepared by: \_\_\_\_\_ Confirmed By: \_\_\_\_\_  
 Date: \_\_\_\_\_ Date: \_\_\_\_\_


**Type of package**

1=Dairy faming      2= Fatening (sheep & goat)  
3= Fatening (cattle)   4= Poultry  
5= Beekeeping      6= Horticulture & irrigation  
7= Sheep goat breeding   8= Small sacle trade (Petty tread)  
9= Fish trade      10= others ( sepcfy)

Changes observed in the lives of the beneficiaries

Changes observed in their asset

Changes observed in their income

Challenges

Prepared by: \_\_\_\_\_

Date: \_\_\_\_\_

Confirmed By: \_\_\_\_\_

Date: \_\_\_\_\_

**Leave No Women Behind Joint Program (LNWB JP)**

**Training records formant for Communities**

**Region:** \_\_\_\_\_

**Woreda:** \_\_\_\_\_

**Year:** \_\_\_\_\_

Type of Training (select one): Introduction to IGA, SACCO/business training, IGA package Training

Topics covered: \_\_\_\_\_

Date of Training: From \_\_\_\_\_ to \_\_\_\_\_

Place of Training: \_\_\_\_\_

Trainers:

S/No	Name of trainers	Sex	Position	Organization/office	Contact Info (tel & email)

Trainees:

S/No	Name of trainees	Sex	Age	Kebele	Village	SACCO

Prepared by: \_\_\_\_\_

Confirmed By: \_\_\_\_\_

Date: \_\_\_\_\_

Date: \_\_\_\_\_

**Leave No Women Behind Joint Program (LNWB JP)**

**Training records formant for GO staff**

**Region:** \_\_\_\_\_

**Woreda (if applicable):** \_\_\_\_\_

**Level of training (select one):** Regional ToT for Woreda staff, Woreda ToT for DAs/Cooperative Agents

**Type of training (select one):** Introduction to IGA, SACCO/business training, IGA package training

**Topics covered:** \_\_\_\_\_

**Date of Training: From** \_\_\_\_\_ **to** \_\_\_\_\_

**Place of Training conducted:** \_\_\_\_\_

**Trainers:**

S/No	Name of trainers	Sex	Position	Organization/office	Contact Info (tel & email)

**Trainees:**

S/No	Name of trainers	Sex	Position	Organization/office	Contact Info (tel & email)

**Types of handout/materials provided to the trainees:**

\_\_\_\_\_

**Prepared by:** \_\_\_\_\_

**Date:** \_\_\_\_\_

**Confirmed By:** \_\_\_\_\_

**Date:** \_\_\_\_\_

**Leave No Women Behind Joint Program (LNWB JP)**

1 - 9 recording format

Region: \_\_\_\_\_

Woreda: \_\_\_\_\_

Kebele: \_\_\_\_\_

S/No	Name of adolescent girl or women trained by the DAs	Age	# of the women reached	Women and adolescent girls reached through 1 - 9 effect						
				Name	Age	Sex	Family size	Martial status	Village	When were they reached?

Prepared by: \_\_\_\_\_ Confirmed by : \_\_\_\_\_

Date : \_\_\_\_\_ Date: \_\_\_\_\_



**Leave No Women Behind Joint Program  
(LNWB JP)**

**Quarterly Progress Report Format**

**Reporting Period: \_\_\_\_\_ - \_\_\_\_\_**

**Report Submitted by: (Implementing partner name)**

<b>Table of Contents</b>	<b>Page</b>
<b>Acronyms.....</b>	
<b>Program Profile .....</b>	
<b>Executive summary.....</b>	
<b>Progress Report .....</b>	
<b>Challenges and Measures taken .....</b>	
<b>Lesson Learned .....</b>	
<b>Action Plan for next quarter .....</b>	

## 2. Program Profile

Title of the programme	Leave No Woman Behind Joint Program
Donor	Millennium Development Goals Achievement Fund (MDGF), through a partnership agreement with Government of Spain and UNDP
Implementation area	
Target Population	
UN partners	UNFPA and WFP
Implementing Partners	Line Ministries offices: Women, Children & Youth Affairs, Finance and Economic Development, Agriculture, and Cooperatives, Health, and Education
M&E	Baseline survey was done MTR was done
Reporting Period	
Total Budget of the quarter	

## **Executive summary**

### **This section includes: (1- Page)**

- A brief overview of implementation area, population, economic zone, and etc
- Summary of planned against accomplished activities
- Summary of modalities/approaches adopted during the process of implementation e.g. involvement of implementing partners, joint monitoring visitis, program management and technical committee meetings etc.
- This section also present a summary of evidence-based progress made on puts to reach outcomes.
- Summary of the strengths and weakness

## **Progress Report**

### **General points to note when preparing the report:**

- In the narrative report please clearly distinguish activities merely funded by LNWB and /or activities implemented with a match from other Government programs;
- Summarized each narrative report under each output indicators
- Make sure that narrative is consistent with the tabular report as well as the financial
- Include case studies/photos where possible (please label and mention who took photos);
- Include challenges faced and measures taken
- Include Lesson learned ( If there is any)

### **JP Output 1.1**

Increased community capacities, particularly vulnerable groups' such as women and girls, to participate in decisions that positively affect gender equality

#### **Indicators**

# of early marriage case reported to CC facilitators/WOCYA/Justice office

# of community members reached through resonance effect

# of CC sites covered,

# of CC facilitators trained,

# Of CC participants who graduated (disaggregated by sex)

# of current CC participants, (disaggregated by sex)

## **JP Output 1.2**

Increased institutional capacity of MoWCYA, BoWCYAs and the district Women Affairs offices

### **Indicators**

# of regular PTC/PMC meetings

# of joint monitoring visits

# of professionals recruited and deployed in M/BoWCYA and district WOWCYAs

# and type of equipment procured for gender ministry staff at federal, regional and district levels

# program review meetings and experience sharing

### **Case Study (If any)**

The case study should contain the following basic attributes:

- Their name, where they live, family size, their economic status, and livelihood zone;
- How they got involved in the program, what support they received;
- What changes have they seen in their lives/ that of their family?
- Please include a photo of the case interviewee

## **JP Output 2.1**

Improved life skills and literacy status of adolescent girls and women

## **Indicators**

# of adolescent girls who are regularly attending the ABE centers

# of girls and women attending adult literacy classes & life skill classes

# of girls and women who are supplied with education materials

# of NFE centers rehabilitated or furnished if there are any

# of targeted adolescent girls and women who are able to read and write

# of Bi-annual review meetings conducted with educators and woreda education office

Case study to check literacy training of mothers is having indirect effect on girls drop out/net enrollment rate

## **Case Study (If any)**

The case study should contain the following basic attributes:

- Their name, where they live, family size, their economic status, and livelihood zone;
- How they got involved in the program, what support they received;
- What changes have they seen in their lives/ that of their family?
- How does the program affect their children education life, how their children education status before was and now
- Please include a photo of the case interviewee

## **JP Output 3.1**

Strengthened women and girls' right claiming capacity information and services for sexual and reproductive health, HIV/AIDS and addressing GBV

**Indicators**

# of SRH sensitization events conducted and total No. of women and girls reached this way

# of women (15 – 49 age) and girls (10 -19) attending SRH classes given by HEW workers disaggregated by age

# and Type of IEC /BCC materials produced

**JP Output 3.2**

Strengthened institutional capacity of health facilities for effective and efficient sexual and reproductive health service provisions

**Indicators**

# of health extension workers and health facility staff trained on RH, HIV and Gender issues;

# and type of equipment and commodities procured and delivered to health facilities

# of Bi-annual review meetings conducted

**JP Output 4.1**

Improved knowledge of adolescent girls and women on income generating activities

**Indicators**

#of adolescent girls and women trained in principles of income generating activities.

(IGA)

#of adolescent girls and women reached by peer educators and learned about principles of income generating activities.



### **JP Output 4.2.**

Improved skills of women to create and manage physical, human and social assets

#### **Indicators**

# of women who are trained in credit & saving principles, book keeping, business plan preparation, marketing and leadership

#of women trained in specific IGA package

# of women engaged in income generating activities (IGA) by type of IGA

### **JP Output 4.3**

Improved access of target women to functioning and financial saving and credit service

#### **Indicators**

# of women who have access to saving and credit service

Loan repayment rate

#### **Case Study (If any)**

- The case study should contain the following basic attributes:
- Their name, where they live, family size, their economic status, and livelihood zone;
- How they got involved in the program, what support they received;
- What changes have they seen in their lives/ that of their family?
- How does the program affect their children education life, improvement show on their income, asst, and generally on their livelihood comparing to before LNWB JP support
- Loan repayment status
- Please include a photo of the case interviewee

## Challenges and Measures taken

### Challenges and measures taken

- This section briefly describe the challenges faced and measures taken to solve the problem

## Lesson Learned

### Lesson Learned (If any)

- The lesson learned include a short summary of an activity or approach which has been used and proved to be of effective, relevant that can be adopted and scaled up by other programs or otherwise something which did not work well and should not be repeated by others

## Action Plan for next quarter

(Please provide plan for next quarter and include pending activities)

Prepared by: \_\_\_\_\_

Reviewed by: \_\_\_\_\_

Date: \_\_\_\_\_

Date: \_\_\_\_\_

**Leave No Women Behind Joint Program  
(LNWB JP)**

**Annual Progress Report Format**

**Reporting Period: \_\_\_\_\_ - \_\_\_\_\_**

**Report Submitted by: (Implementing partner name)**

**Table of Contents** **Page**

**Acronyms.....**

**Program Profile .....**

**Executive summary.....**

**Progress Report .....**

**Challenges and Measures taken .....**

**Lesson Learned .....**

### 3. Program Profile

Title of the program	Leave No Woman Behind Joint Program
Donor	Millennium Development Goals Achievement Fund (MDGF), through a partnership agreement with Government of Spain and UNDP
Implementation area	
Target Population	
UN partners	UNFPA and WFP
Implementing Partners	Line Ministries offices: Women, Children & Youth Affairs, Finance and Economic Development, Agriculture, and Cooperatives, Health, and Education
M&E	Baseline survey was done MTR was done
Reporting Period	
Total Budget of the year	

## **Executive summary**

### **This section includes: (1- 2 Page)**

- A brief overview of implementation area, population, economic zone, and etc
- Summary of planned against accomplished activities
- Summary of modalities/approaches adopted during the process of implementation e.g. involvement of implementing partners, joint monitoring visits, program management and technical committee meetings etc.
- This section also present a summary of evidence-based progress made on outputs to reach outcomes.
- Explain how this year progress contributed to reach the intended out come
- Summary of the strengths and weakness

## **Progress Report**

### **General points to note when preparing the report:**

- In the narrative report please clearly distinguish activities merely funded by LNWB and /or activities implemented with a match from other Government programs;
- Summarized each narrative report under each output and outcome indicators
- Make sure that narrative is consistent with the tabular report as well as the financial
- Focuses on the changes observed.
- Include case studies/photos where possible (please label and mention who took photos);
- Include challenges faced and measures taken
- Include Lesson learned ( If there is any)

#### **1. JP out come**

**Increased promotion and protection of human rights and community empowerment  
(With special emphasis on adolescent girls and women)**

#### **Indicators**

% of adolescent girls 12- 24 and women 25 – 49 who have ever counseled and received testing (VHCT)

#### **JP Output 1.1**

Increased community capacities, particularly vulnerable groups' such as women and girls, to participate in decisions that positively affect gender equality

#### **Indicators**

# of early marriage case reported to CC facilitators/WOCYA/Justice office

# of community members reached through resonance effect

- # of CC sites covered,
- # of CC facilitators trained,
- # Of CC participants who graduated (disaggregated by sex)
- # of current CC participants, (disaggregated by sex)

### **JP Output 1.2**

Increased institutional capacity of MoWCYA, BoWCYAs and the district Women Affairs offices

#### **Indicators**

- # of regular PTC/PMC meetings
- # of joint monitoring visits
- # of professionals recruited and deployed in M/BoWCYA and district WOWCYAs
- # and type of equipment procured for gender ministry staff at federal, regional and district levels
- # Program review meetings and experience sharing

### **2. JP Outcome**

**Regional efforts to strategically address gender disparities in literacy and educational attainment, sexual and reproductive health services and GBV are strengthened**

#### **Indicators**

- The ratio of boys to girls in terms of net enrollment rate
- School dropout rate of targeted woredas<sup>1</sup>

---

<sup>1</sup> Used the annexed table to capture data from WOE (EMIS)



## **JP Output 2.1**

Improved life skills and literacy status of adolescent girls and women

### **Indicators**

# of adolescent girls who are regularly attending the ABE centers

# of girls and women attending adult literacy classes & life skill classes

# of girls and women who are supplied with education materials

# of NFE centers rehabilitated or furnished if there are any

# of targeted adolescent girls and women who are able to read and write

# of Bi-annual review meetings conducted with educators and woreda education office

Case study to check literacy training of mothers is having indirect effect on girls drop out/net enrollment rate

### **Case Study (If any)**

The case study should contain the following basic attributes:

- Their name, where they live, family size, their economic status, and livelihood zone;
- How they got involved in the program, what support they received;
- What changes have they seen in their lives/ that of their family?
- How does the program affect their children education life, how their children education status before was and now
- Please include a photo of the case interviewee

### **3) JP Outcome**

**Improved access to and demand for quality, gender sensitive and integrated reproductive health care, including HIV/AIDS prevention services at all levels**

#### **JP Output 3.1**

Strengthened women and girls' right claiming capacity information and services for sexual and reproductive health, HIV/AIDS and addressing GBV

#### **Indicators**

# of adolescent girls and women accessed basic SRH services (data from health posts and health centers in each program Kebele)<sup>2</sup>

# of SRH sensitization events conducted and total No. of women and girls reached this way

# of women (15 – 49 age) and girls (10 -19) attending SRH classes given by HEW workers disaggregated by age

# and Type of IEC /BCC materials produced

#### **JP Output 3.2**

Strengthened institutional capacity of health facilities for effective and efficient sexual and reproductive health service provisions

#### **Indicators**

# of health extension workers and health facility staff trained on RH, HIV and Gender issues;

# and type of equipment and commodities procured and delivered to health facilities

# of Bi-annual review meetings conducted

---

<sup>2</sup> Use the annexed table to capture data from WOH (HMIS)

#### **4) JP Outcome**

**Target women and their family members enjoy improved and sustainable livelihoods with increased income, improved food security; and enhanced resilience to shocks**

##### **Indicators**

% of target households resulting in increased income as compared to end of 2008.

% of target households resulting in increased assets as compared to end of 2008

##### **JP Output 4.1**

Improved knowledge of adolescent girls and women on income generating activities

##### **Indicators**

#of adolescent girls and women trained in principles of income generating activities(IGA)

#of adolescent girls and women reached by peer educators and learned about principles of income generating activities.

##### **JP Output 4.2.**

Improved skills of women to create and manage physical, human and social assets

##### **Indicators**

# of women who are trained in credit & saving principles, book keeping, business plan preparation, marketing and leadership

#of women trained in specific IGA package

# of women engaged in income generating activities (IGA) by type of IGA

### **JP Output 4.3**

Improved access of target women to functioning and financial saving and credit service

#### **Indicators**

# of women who have access to saving and credit service

Loan repayment rate

#### **Case Study (If any)**

- The case study should contain the following basic attributes:
- Their name, where they live, family size, their economic status, and livelihood zone;
- How they got involved in the program, what support they received;
- What changes have they seen in their lives/ that of their family?
- How does the program affect their children education life, improvement show on their income, asst, and generally on their livelihood comparing to before LNWB JP support
- Loan repayment status
- Please include a photo of the case interviewee

#### **Challenges and Measures taken**

##### **Challenges and measures taken**

- This section briefly describe the challenges faced and measures taken to solve the problem

## Lesson Learned

### Lesson Learned (If any)

- The lesson learned include a short summary of an activity or approach which has been used and proved to be of effective, relevant that can be adopted and scaled up by other programs or otherwise something which did not work well and should not be repeated by others

Prepared by: \_\_\_\_\_

Reviewed by: \_\_\_\_\_

Date: \_\_\_\_\_

Date: \_\_\_\_\_

## Quarterly Report - Physical Leave No Women Behind Joint Program (JP)

Format: Physical

Name of Implementing Agency: \_\_\_\_\_

Program Location: Region: \_\_\_\_\_ Woreda: \_\_\_\_\_

Program Beneficiaries: \_\_\_\_\_

Fiscal Year: \_\_\_\_\_ Reporting Period: \_\_\_\_\_

Total Budget of the year: \_\_\_\_\_ Total budget of the reporting Period: \_\_\_\_\_

S/N	Output indicators	Unit	Target		Achievements				Proportion of female			
			3 year target	Y__ target	Since the Inception (cumulative)		In this quarter		In this year		# of female	%
					Qty	%	Qty	%	Qty	%		

**JP Output**

1. 1. Increased community capacities, particularly vulnerable groups' such as women and girls, to participate in decisions that positively affect gender equality

**JP Output**

1.2 Increased institutional capacity of MoWCYA, BoWCYAs and the district Women Affairs offices

**JP Output**

2.1 Improved life skills and literacy status of adolescent girls and women

**JP Output**  
3.1 Strengthened women and girls' right claiming capacity information and services for sexual and reproductive health, HIV/AIDS and

**JP Output**  
3.2 Strengthened institutional capacity of health facilities for effective and efficient sexual and reproductive health service provisions

**JP Output**  
4.1. Improved knowledge of adolescent girls and women on income generating activities

**JP Output**  
4.2. Improved skills of women to create and manage physical, human and social assets

**JP Output**  
4.3 Improved access of target women to functioning and financial saving and credit service

prepared by: \_\_\_\_\_  
Date: \_\_\_\_\_

Confirmed by: \_\_\_\_\_  
Date: \_\_\_\_\_

## Annual Report - Physical Leave No Women Behind Joint Porgram (LNWB JP)

Format: Physical

Name of Implemeting Agency: \_\_\_\_\_

Program Location: Region: \_\_\_\_\_

Woreda: \_\_\_\_\_

Program Beneficiries: \_\_\_\_\_

Fiscal Year: \_\_\_\_\_

Reporting Period: \_\_\_\_\_

Total Budget of the year: \_\_\_\_\_

Total budget of the reporting Period: \_\_\_\_\_

S/N	Output indicators	Unit	Target		Achivements						Since the Inception			Proption of female	
			3 year target	Y__ target	Q1	Q2	Q3	Q4	Y__ Qty	%	Target	Acivement	%	# of female	%
<b>JP Output</b>															
1. 1. Increased community capacities, particularly vulnerable groups' such as women and girls, to participate in decisions that positively affect gender equality															
<b>JP Output</b>															
1.2 Increased institutional capacity of MoWCYA, BoWCYAs and the district Women Affairs offices															

<b>JP Output</b>															
2.1 Improved life skills and literacy status of adolescent girls and women															



**JP Output**

3.1 Strengthened women and girls' right claiming capacity information and services for sexual and reproductive health, HIV/AIDS and addressing GBV


**JP Output**

3.2 Strengthened institutional capacity of health facilities for effective and efficient sexual and reproductive health service provisions

**JP Output**

4.1. Improved knowledge of adolescent girls and women on income generating activities

**JP Output**

4.2. Improved skills of women to create and manage physical, human and social assets

**JP Output**

4.3 Improved access of target women to functioning and financial saving and credit service

prepared by: \_\_\_\_\_

Date: \_\_\_\_\_

Confirmed by: \_\_\_\_\_

Date: \_\_\_\_\_

**Leave NO Women Behind Joint program  
Data Collection Format From WOE**

**Region:** \_\_\_\_\_

**Woreda:** \_\_\_\_\_

**Reporting Date** \_\_\_\_\_

Name of the School/Kebele	Enrollement						School Drop Out					
	Y-- (base year)		Y---		Y---		Y-- (base year)		Y---		Y---	
	M	F	M	F	M	F	M	F	M	F	M	F

Prepared By: \_\_\_\_\_

Date: \_\_\_\_\_

**Leave NO Women Behind Joint program**

**Data Collection Format From WHO**

**Region:** \_\_\_\_\_

**Woreda:** \_\_\_\_\_ **Reporting Date** \_\_\_\_\_

Name of the Health post/Kebele	ANC			PNC			VCT			FP		Skill delivery/safe delivery			
	Y-- (base year)	Y---	Y---	Y-- (base year)	Y---	Y---	Y-- (base year)	Y---	Y---	Y-- (base year)	Y---	Y---	Y-- (base year)	Y---	Y---

Prepared By: \_\_\_\_\_

Date: \_\_\_\_\_

## Tips on Conducting Joint Monitoring Visit

### Pre- Departure Preparations

- Clarify the purposes of the visit
- What will the visit achieve?
- Are you the right person to go?
- Do you have the technical expertise?
- Timing: Integrate the visit into the work plan of project implementers. Negotiate on the best time which you could fit in with (review/planning exercise, project coordinating meeting etc)
- Review project key document and explore from field staff opportunities for providing support

### Develop the ToR:

- The purpose of the visit
- The proposed approach and methodology
- When it will happen (including itinerary)
- Who will be involved (the participants and their respective roles)
- What resources will be required, who will pay (logistics of a field visit)
- Expected outputs (including the requirements of the report)

### Develop Checklists for different aspects of the project

#### The checklist could include:

- Financial issues/Cash Management,
- Administration/ Human Resource Management
- Project management,
- And other programming issues

## **Example of the Joint Monitoring Visit TOR**

### **Objectives (Included in TOR)**

- To examine the program implementation status and to identify gaps
- Examine the status of program Operations Plans Vs its achievement
- Share experience and provide technical assistance accordingly

### **The proposed approach and methodology**

- Focus Group Discussion (FGD) with the Kebele PTC/PMC
- Key Informant Interview (KII) with Cooperative Agents, Livelihood DAs, HEW, CC facilitators, and

### **When it will happen (including itinerary)**

- Quarterly
- Biannually
- annually

### **Who will be involved (the participants and their respective roles)**

- PTC
- PMC

### **What resources will be required, who will pay (logistics of a field visit)**

- Car
- perdiem/etc

### **Expected outputs (including the requirements of the report)**

- Joint monitoring visit report when by who
- Action plan based on the recommendations
- Issued needs decisions

## **Tips for preparing Joint Monitoring Visit Checklist**

### **Financial Operations/ Cash Management**

**E.g.**

- How the sectors utilized their budget,
- The procurement process
- Utilizing/liquidating the budget on time issues like can be included in the checklist

### **Administration**

### **Program Management**

**E.g.**

- Review the project's progress towards the implementation of its plan.
- Inquire about the level of satisfaction of beneficiaries with project outputs/outcome.
- Look into the JP capacity to report accurately against the approved budget.
- Look into inconsistencies between JP plan and its implementation
- Look into the level of involvement of program beneficiaries.
- Inquire about the effectiveness of the program structures, lines of communication.
- Look into the program issues needs higher level decisions
- Inquire about actions can be taken by PMC in regards to up-coming visit
- Discuss with Kebele level PMC and respective ground level implementers any issues related to timely submission and accuracy of reports.

## LNWB Joint Program Results Framework (Revision #3)

Year 1 (Feb 2009 – Jan 2010), Year 2 (Feb 2010 – Jan 2011), Year 3 (Feb 2011 – Jan 2012), Year 4 ( Feb 2012 – Jan 2013)

### UNDAF Outcome

#### **1) Humanitarian Response, Recovery and Food Security**

By 2011, significantly strengthened capacities of the Government, communities and other relevant stakeholders to respond to situations that threaten the lives and well-being of a significant proportion of a population, which require rapid and appropriate action to ensure their survival, care, protection, and recovery, while enhancing their resilience to shocks and leading to food security and sustainable livelihoods.

#### **2) Basic Social Services and Human Resources**

By 2011, UN agencies will have significantly supported national efforts to achieve MDGs relating to improved and equitable access and utilization of decentralized social services, including those for health, nutrition, education, water, sanitation and hygiene, by developing capacities of both those responsible for service delivery, and those who demand and use such services, while giving special focus to the most vulnerable and underserved groups.

#### **3) HIV/AIDS**

By 2011, achieve substantial progress towards reducing the vulnerability to HIV infection, especially of women and girls, and alleviate the impact of the epidemic, with emphasis on underserved and affected population.

#### **4) Good Governance**

By 2011, contribute to the achievement of Millennium Declaration principles through enhanced demographic empowerment and participation at the grassroots level through justice sector reform , civil service and civil society capacity building and promotion of decentralization at all levels, including upholding of human rights principles, transparency and accountability.

#### **5) Enhanced Economic Growth**

By 2011, at national, regional, organizational and business levels, capacity strengthened and knowledge developed for increased incomes of the poor, through enhanced labour factor productivity and more intense and widespread use of technology in at least one economic growth corridor, with potential interventions related to expansion and diversification in agriculture, industry and services.

### **1. Joint Programme Outcome**

Increased promotion and protection of human rights and community empowerment (with special emphasis on adolescent girls and women)

Indicators: (source for baseline: Population Council, 2009)

1. Percentage of female circumcision (FGM/C) reduced by 15% as compared with end of 2008

Baseline: Amara Region 61.7% & Tigray 41.2%      Targets: 15% reduction      MoV: Baseline & End line survey

2. Percentage of adolescent girls married before the age of 18 reduced by 30% as compared with end of 2008

Baseline: Amara Region 52.4% & Tigray 21.7%      Targets: 30% reduction      MoV: Baseline & End line survey

**Resources: USD 1,497,500** Risks and Assumptions: GoE commitment to implementation

Joint Programme Outputs	SMART Indicators	Reference to Agency priority or Country Programme	Implementing Partners	Indicative activities For each Output	Actual Resource allocation <sup>1</sup> +indicative time frame				Total <sup>4</sup>
					Y1	Y2	Y3 <sup>2</sup>	Y4	
1. 1. Increased community capacities, particularly vulnerable groups' such as women and girls, to participate in	- % of girls ( 12-24) and women (25-49)	UNFPA, Gender CPAP	Ministry of Women Children	- Training of 425 CC facilitators in life	Feb2009 – Jan2010	Feb2010 – Jan2011	Feb2011- Jan2013	Feb2012- Jan 2013 <sup>3</sup>	

<sup>1</sup> Actual resource allocation shows the actual budget utilization status. Although the JP officially started in Feb 2009, actual budget implementation and work plan of the IPs started in July 2009. As a result of this start up delay, the Y1, Y2 and Y3 plan was carried out using only the first and second year budget.

<sup>2</sup> Budget put under year three is remaining budget form 2<sup>nd</sup> year transfer

<sup>3</sup> Although the no cost extension request period is January 2013, the implementation in planned to be finalized in December 2012, and the last month for reporting and submission of final evaluation.

<sup>4</sup> Total budget is calculated as sum of budget under year 1, 2 & 4 minus the remaining budget put under Year 3.

<p><b>decisions that positively affect gender equality</b></p>	<p>opposing FGM/C</p> <p>Baseline: Population Council, 2009</p> <p>Amhara: (12-24)=39.9% (25-49)=30.4%</p> <p>Tigray: 12-49=52.8% 25-49=58.2%</p> <p>Target: 40% increase</p> <p>- No. of early marriage cases reported to CC Facilitators</p> <p>Baseline:0</p> <p>Target:200 cases reported -</p> <p>No.of community members reached by resonance effect</p> <p>Baseline:0</p> <p>Target: 259,400</p>	<p>Outcome: Institutional mechanisms and socio-cultural practices that promote and protect the rights of women and girls are strengthened</p>	<p>and Youth Affairs at federal, regional and district level</p>	<p>skills, RH, GBV and livelihoods and CC methodology</p> <ul style="list-style-type: none"> <li>- identifying 200 CC sites</li> <li>- Mobilizing 20, 130 community members to engage in regular conversations addressing gender, GBV, RH and HIV AIDS</li> <li>- Conduct bi-monthly CC meetings in 200 sites</li> </ul>	<p>\$100,000</p>	<p>\$144,418</p>	<p>\$58,409</p>	<p><b>Remaining 2<sup>nd</sup> Transfer + Budget Y3</b></p> <p>\$133,409</p>	<p>319,418</p>
<p><b>1.2. Increased institutional capacity of MoWA, BoWAs and the district Women Affairs offices</b></p>	<p>-Quality and timeless of substantive and financial reports.</p> <p>Baseline:: Not to standard</p> <p>Target:: Timely and result oriented reports</p> <p>-% implementation of recommendations or actions proposed in PTC/PMC meetings and field missions</p> <p>Baseline: 0</p> <p>Target: 90%</p>	<p>UNFPA, Gender CPAP</p> <p>Outcome: Institutional mechanisms and socio-cultural practices that promote and protect the rights of women and girls are strengthened</p>	<p>Ministry of Women Affairs at federal, regional and district level</p>	<p>- design packages(training, human resource, and equipment) that would enhance capacities of institutions dealing with Gender in the selected districtss</p> <ul style="list-style-type: none"> <li>- Conduct training for government staff from relevant offices on GBV and RH</li> <li>- Procure and deliver supplies and equipment</li> <li>-Procure and deliver vehicles and motor bikes</li> <li>- Recruit project personnel for M/BoWA and district women affairs offices</li> <li>-Provide technical backstopping support by UN</li> </ul>	<p><b>Y1</b></p> <p>\$620,166</p>	<p><b>Y2</b></p> <p>\$306,498</p>	<p><b>Y3</b></p> <p>\$18,609</p>	<p><b>Y4- Jan2013 Remaining 2<sup>nd</sup> Transfer + Budget Y3</b></p> <p>\$270,027</p>	<p><b>Total</b></p> <p>\$1,178,082</p>



**2. Joint Programme Outcome:**

Regional efforts to strategically address gender disparities in literacy and educational attainment are strengthened

Indicators (source for baseline: Population Council, 2009)

1. Percentage of literate women aged 25 to 49 increased by 6% as compared to end of 2008

Baseline: Amara 7.5% & Tigray 11.4% Target: 5% increase MoV: Base line & End line survey

2. School dropout rate for girls in primary education, in targeted woredas, reduced as compared to end of 2008

Baseline: 11.6% (Source: National Education Statistics) Targets:10% reduction MoV: Bureau of Education Records

**Resources: USD 570,764**

Risks and Assumptions: Close and timely supervisory support from key government sectors

Joint Programme Outputs	SMART indicators	Reference to Agency priority or Country Programme	Implementing Partners	Indicative activities For each Output	Actual Resource allocation +indicative time frame				
					Y1 Feb2009 – Jan2010	Y2 Feb2010 – Jan2011	Y3 <sup>5</sup> Feb2011- Jan2013	Y4-Jan2013 Remaining 2 <sup>nd</sup> Transfer + Budget Y3	Total
<b>Life skills and Literacy</b> Improved life skills and literacy status of adolescent girls and women	- % of girls and women aged 12-49 who received life skills education  Baseline: Population Council,2009 Amhara: 12-14=18.1 - 15-49=3.7  Tigray; 12-24=70.5 Target: 10% increase  - No.of targeted adolescent girls and owmen who graduated from adult literacy and life skills training  Baseline; 0 Target:77,853  No. of Alternative Education Centers and NFE furnished and equipped  Baseline:0 Target:200	UNFPA, Gender CPAP Outcome: Institutional mechanisms and socio-cultural practices that promote and protect the rights of women and girls are strengthened	Bureau of Education and district education offices	- Provide basic alternative education and adult functional literacy to adolescent girls and boys and women -Provide training in life skills , RH and legal rights to adolescent girls and women - Procure life skills/literacy materials - Renovate and furnish NFE centers	\$310,488	\$130,138	\$61,629	\$191,767	\$570,764

<sup>5</sup> Budget put under year three is remaining budget form 2<sup>nd</sup> year transfer

### 3. Joint Programme Outcome

Improved access to and demand for quality, gender sensitive and integrated reproductive health care, including HIV/AIDS prevention services at all levels.

Indicators: (source for baseline: Population Council, 2009)

1. % of sexually active women using family planning method increased by 30% as compared to end of 2008  
Baseline: 27.2% Targets: a 30% increase MoV: Baseline & End line survey
2. % of adolescent girls (15-49) and women (25 -49) receiving pre-natal care during pregnancy increased by 30% as compared to end of 2008  
Baseline: 24.5% Targets: a 30% increase MoV: Baseline & End line survey
3. % of women and adolescent girls aged 15 -49 who have ever been counseled and tested for HIV (VHCT) increased by 10% as compared to end of 2008  
Baseline: Amara 13.4% & Tigray: 30.9% Target: a 10% increase MoV: Baseline & End line survey

**Resource: USD 838,996** Risks and Assumptions: Targets and community are willing to adopt new behavioral changes related to RH/HIV/AIDS

Joint Programme Outputs	SMART Outputs and responsible UN Organization	Reference to Agency priority or Country Programme	Implementing Partners	Indicative activities For each Output	Resource allocation +indicative time frame				
					Y1 Feb2009 – Jan2010	Y2 Feb2010 – Jan2011	Y3 <sup>6</sup> Feb2011- Jan2013	Y4- Jan2013 Remaining 2 <sup>nd</sup> Transfer + Budget Y3	Total
<p><b>Reproductive health</b></p> <p>3.1 Strengthened women and girls' right claiming capacity information and services for sexual and reproductive health, HIV/AIDS and addressing GBV</p> <p>3.2.Strengthened institutional capacity of health facilities for effective and efficient sexual and reproductive health service provisions</p>	<p>- % of women who know at least one family planning method</p> <p>Baseline: 92.4 , (Population Council, 2009)</p> <p>Target:10% increase</p> <p>- No.of adolescent girls and women who have accessed health post or/and health center for maternal health related services</p> <p>Baseline:0</p> <p>Target:92,540</p> <p>-No.of health extension worker and health staff trained on RH, HIV and gender.</p> <p>Baseline:0</p> <p>Target;493</p>	<p>UNFPA Reproductive Health , CPAP Outcome: Improved access to, demand for and utilization of high-quality health information and services at all levels for men, women, young people and vulnerable groups, including those in emergency and humanitarian situations, focusing on emergency obstetric care, family planning, reproductive health</p>	<p>Ministry of Health at regional and district level</p> <p>Ministry of Health at regional and district level</p> <p>HAPCO at regional and district level</p> <p>Ministry of Health at regional and district level</p>	<p>- - Develop and disseminate appropriate and tailored IEC/BCC materials and messages on RH, HIV and Gender issues;</p> <p>Conduct sensitization and community mobilization interventions on RH, HIV/AIDS and GBV P</p> <p>Support the regional plans on Integrated Refresher Training (IRT) for health extension workers and health facility staff on RH, HIV and Gender issues;</p> <p>Procure and supply essential health equipment and commodities for selected health facilities in the programme operational districts</p>	<p>\$250,000</p>	<p>\$191,767</p>	<p>\$137,308</p>	<p>\$534,537</p>	<p>\$838,996</p>

<sup>6</sup> Budget put under year three is remaining budget form 2<sup>nd</sup> year transfer

	- No.of health facilities equipped with EMoC and other health supplies, Baseline:0 Target: 103	commodity security, STIs, HIV/AIDS and obstetric fistula							
--	--	--	--	--	--	--	--	--	--

**4. Joint Programme Outcome:**

Target women and their family members enjoy improved and sustainable livelihoods with increased income, improved food security and enhanced resilience to shocks.

Indicator:

- 1) % of target households with increased income as compared to end of 2008  
Baseline: to be collected from development agent records      Targets: 50%      MoV: End line survey      Risk and Assumptions: natural disaster / social and economic stability
- 2) % of target households with increased assets as compared to end of 2008  
Baseline: to be collected from development agent records      Targets: 70%      MoV: Baseline & End line collected by DAs/Cooperative agents      Risks and Assumptions: food availability in the area / natural disaster / social and economic stability
- 3) Proportion of women saving regularly as compared to end of 2008  
Baseline: to be collected from development agent records      Targets: 90%      MoV: Baseline & End line collected by DAs/Cooperative agents      Risks and Assumptions: natural disaster/ social and economic stability:

**Resource USD 4,018,352**

Joint Programme Outputs	SMART Indicators	Reference to Agency priority or Country program	Implementing Partners	Indicative activities For each Output	Resource allocation +indicative time frame				
					Y1 Feb2009 – Jan2010	Y2 Feb2010 – Jan2011	Y3 <sup>7</sup> Feb2011- Jan2013	Y4-Jan2013 Remaining 2 <sup>nd</sup> Transfer + Budget Y3	Total
<b>Livelihoods</b>	(baseline to be recorded from district baseline records on beneficiary women)				\$1,050,745	\$1,582,744	\$170,000	<b>1,554,863</b>	<b>4,018,352</b>
<b>4.1. Improved knowledge of 100,000 adolescent girls and women on income generating activities</b>	10,000 adolescent girls and women trained as peer educators in livelihood skills  10,000 trained girls and women transfer knowledge on livelihood skills to at least 90,000 of their peers	WFP CPAP Outcome Increased ability to manage shocks and meet necessary food needs and diversify livelihoods  "	BoARD / WoARD  BoARD / WoARD	4.1.1. Conduct ToT on livelihood skills for technical personnel such as Development Agents, Experts at District, Zonal and Regional levels  4.1.2. Provide training on income generating activities to 10,000 adolescent girls and women identified under other components  4.1.3. Provide agricultural tools and others to the trained women as a follow up and incentive to ensure they reach at least 10 of their peer groups					

<sup>7</sup> Budget put under year three is remaining budget form 2<sup>nd</sup> year transfer

<b>4.2. Improved skills of 8,000 women to create and manage physical, human and social assets</b> <b>Key Indicators</b>	8000 women skilled in book keeping, business plan preparation, marketing and leadership	„	BoARD / WoARD	4.2.1. Identify potential candidates for the credit scheme through participatory discussions and thorough consultation	Y1	Y2	Y3	Y4 –Jan2013 Remaining 2 <sup>nd</sup> Transfer + Budget Y3	Total
	8000 women engaged in IGA	„	BoARD / WoARD	4.2.2. Mobilize and organize candidate women for credit and saving  4.2.3. Provide training to 8,000 women in credit & saving principles, book keeping, business plan preparation, marketing and leadership  4.2.4. Provide practical training to 8,000 women on specific IGA of their interests					
<b>4.3. Improved access of target women to functioning and sustainable credit and saving service.</b>	8000 women have access to credit and saving service	„	BoARD / WoARD	4.3.1. Define detailed design of saving and credit scheme including selection criteria of women who take credit, and review the design & performance annually	Y1	Y2	Y3	Y4 –Jan2013 Remaining 2 <sup>nd</sup> Transfer + Budget Y3	Total
	Credit recovery rates are more than 80% through 2012.	„	BoARD / WoARD	4.3.2. Provide credit to 8,000 organized and oriented women for IGA					
		„	BoARD / WoARD	4.3.3. Provide technical support for effective IGA  4.3.4. Follow up on credit and saving					

**Resources Summary**

	Direct Programme Cost	7% Indirect Service Charge	Total
UNFPA	\$ 2,990,993	\$ 209,369	\$ 3,200,362
WFP	\$ 4,018,353	\$ 281,285	\$ 4,299,638
Total	\$7,009,346	\$ 490,654	\$ 7,500,000