

UN Ebola Response Multi-Partner Trust Fund

OBJECTIVE

The United Nations Secretary-General launched the United Nations System Response to the Ebola Outbreak to unite efforts of all concerned UN Entities and act as a platform for the global control of the Ebola Outbreak. The Strategic Objectives of the UN System Response to the Ebola Outbreak are: (1) Stop the outbreak; (2) Treat the infected; (3) Ensure essential services; (4) Preserve stability; and (5) Prevent outbreaks in countries currently unaffected. The Strategic Objectives are divided into 13 Mission Critical Actions (MCAs) to which each proposal is contributing.

Mission Critical Actions:

- MCA01 - Identify and tracing
- MCA02 - Safe and dignified burials
- MCA03 - Care for persons
- MCA04 - Medical care for responders
- MCA05 - Food security and nutrition
- MCA06 - Basic Services
- MCA07 - Cash Incentives
- MCA08 - Recovery and Economy
- MCA09 - Materials and Equipment
- MCA10 - Transport and Fuels
- MCA11 - Soc.Mob & Community
- MCA12 - Messaging
- MCA13 - Preparedness

The **Ebola Response Multi-Partner Trust Fund**, which aims to ensure:

- Coherent UN System contribution to the overall Ebola outbreak response through a common financing mechanism;
- Fast, flexible, coordinated and rapid UN action in response to the Ebola outbreak;
- Wide range of funding mobilization from Member

States, regional legislative bodies, inter-governmental or nongovernmental organizations, businesses and individuals;

- Results-based management system to enable monitoring of the Fund's contribution to the Ebola response; and
- Support for UN's efforts in establishing a global platform that facilitates the work of the other partners and stakeholders in the fulfillment of the Strategic Objectives.



© UNICEF

GOVERNANCE STRUCTURE

The Advisory Committee provides guidance to the Special Envoy in the management of the UN Ebola MPTF. The Advisory Committee also serves as a forum for discussing strategic issues and sharing information on funding coverage. The Advisory Committee consists of the following members: Special Envoy on Ebola (as a Chair), three representatives of contributing donors (UK, Sweden and Germany), three representatives of the affected countries (Guinea, Liberia and Sierra Leone), and a representative at UNMEER (observer). Three UN Ebola Crisis Managers serve as Resource Persons to the Advisory Committee. The MPTF Office serves as ex-officio member of the Advisory Committee.

The Special Envoy on Ebola in consultation with the Advisory Committee articulates the Ebola MPTF funding priorities, and make fund allocation decisions.

The Special Envoy is supported by a Fund Secretariat that provides the administrative support to the Advisory Committee; supports the fund mobilization efforts led by the Special Envoy; organizes calls for and appraisal of proposals; and monitors and reports on Fund's programmatic performance to the Advisory Committee.

The Ebola Response MPTF is administered by the UNDP MPTF Office, acting as the Administrative Agent. The UNDP Multi-Partner Trust Fund Office is a UN Facility which administers over 100 UN common funding instruments (<http://mptf.undp.org>). The MPTF Office is responsible for Fund design and set-up, the maintenance of the Fund account, the receipt of donor contributions and the disbursement of funds upon instructions from the Special Envoy and provision of periodic consolidated reports.

FUNDING WINDOWS

The Ebola Response MPTF is uniquely positioned to support this comprehensive approach. To maximize synergies across critical response, preparedness and recovery efforts, the UN Ebola Response MPTF opened two new financing windows to which donors can contribute earmarked contributions: Recovery and Preparedness. The three windows of the UN Ebola Response MPTF (Response, Preparedness and Recovery) will be complementary and will rely on the Fund's flexibility to prioritize resources and assess and fill gaps quickly and efficiently.

FUND OPERATION

Proposals to support Mission Critical Actions, ranging from care for persons with Ebola to social mobilization and community engagement are supported by the Fund. Operational procedures of the Ebola Response MPTF are streamlined to facilitate rapid fund allocation processes.

HOW TO CONTRIBUTE

Contributions to the Ebola Response MPTF may be accepted from Member States, regional legislative bodies, inter-governmental or nongovernmental organizations, businesses and individuals. In order to contribute to the Fund, the Standard Administrative Arrangement with the MPTF Office needs to be signed.


Contributors are encouraged to provide un-earmarked contributions. If due to specific donor preferences the un-earmarked contributions are not feasible, donors may earmark their contributions to a specific window, affected country, or Strategic Objective of Ebola Response. As of 24 July 2015, the Trust Fund received US\$140,664,761 from 40+ member states, private sector, charity organizations and individuals around the world.

UN EBOLA RESPONSE MPTF AT A GLANCE (as of 30 April 2015)

 **140M**
Contributed

 **40**
Donors

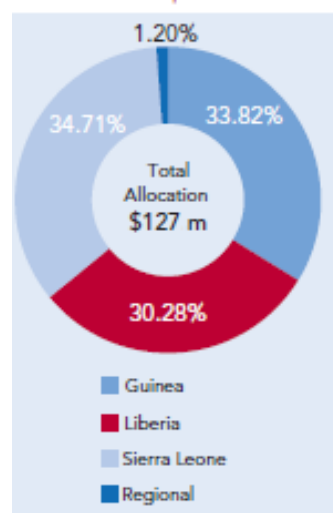
 **71M**
Expenditures

 **127M**
Allocated

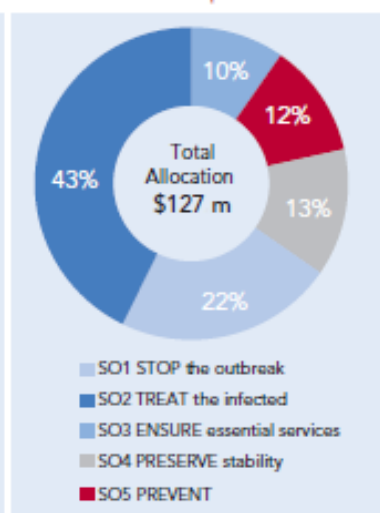
 **9**
UN Entities

 **10**
MCAs Supported

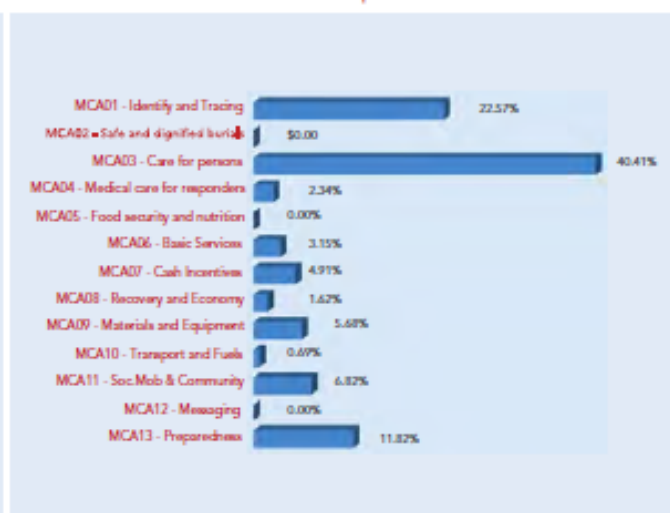
Funding per Country
as of 30 April 2015



Funding per Strategic Objectives
as of 30 April 2015



Funding per Mission Critical Action
as of 30 April 2015



RECIPIENT ORGANISATIONS



FAO



ICAO



IOM



UNDP



UNESCO



UNFPA



UNHCR



UNICEF



UNMEER



UNOPS



UN WOMEN

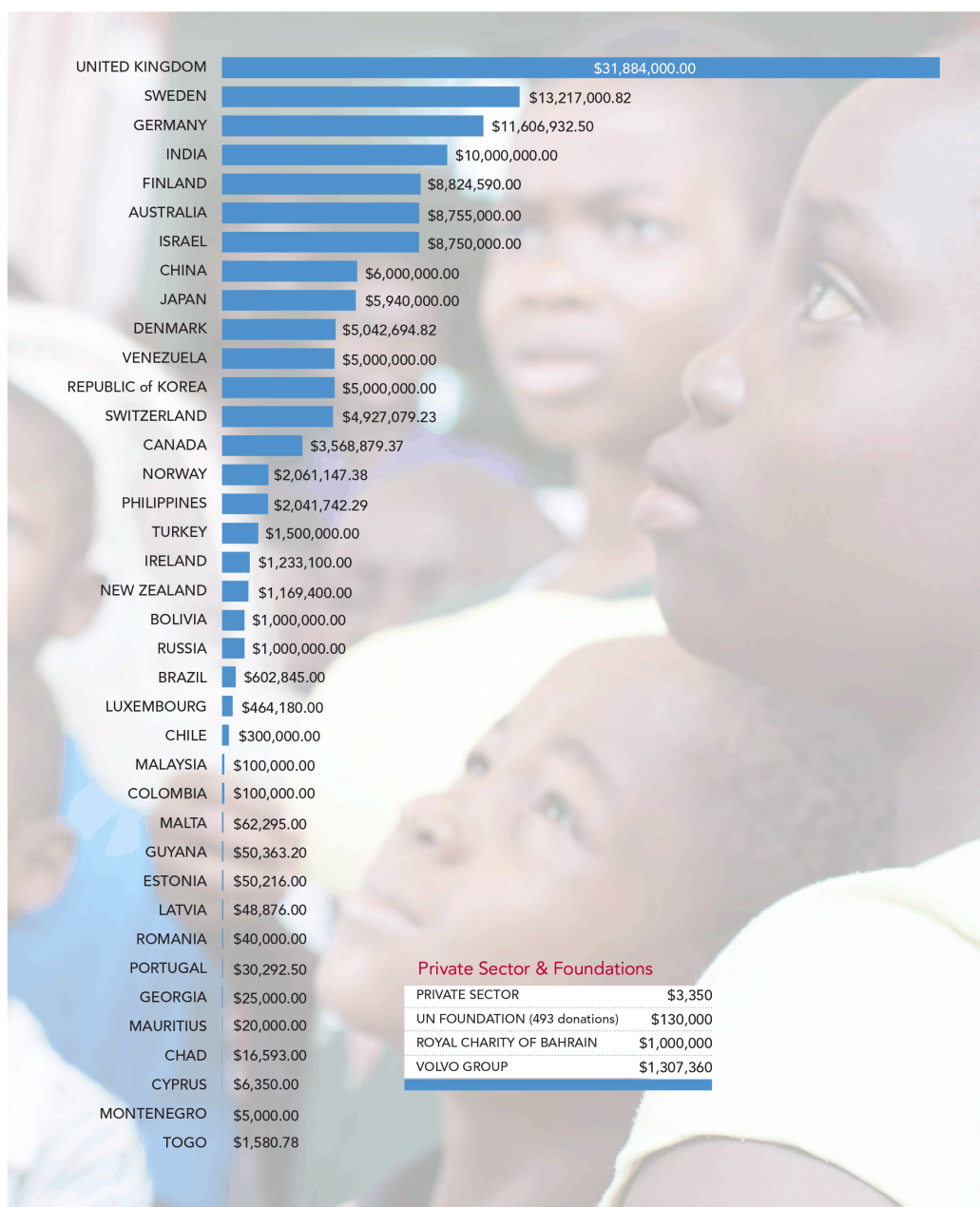


WFP



WHO

CONTRIBUTORS - UN EBOLA RESPONSE MPTF



CONTACTS

For Policy and Programme Issues:

Dr. David Nabarro, Special Envoy on Ebola

E-mail: david.nabarro@undp.org

Ms. Olga Aleshina, Head, Ebola MPTF Technical Secretariat;

Tel: +1 212 906 6155; E-mail: olga.aleshina@undp.org

For Fund Administration Issues:

Multi-Partner Trust Fund Office (MPTF Office)

Ms. Henriette Keijzers, Deputy Executive Coordinator, OIC;

Tel: +1 212 906 5337; E-mail: henriette.keijzers@undp.org

Ms. Eva Sáenz de Jubera, Fund Portfolio Manager;

Tel: +1 212 906 6594; E-mail: eva.saenz@undp.org

For more information about the Ebola Response MPTF, visit the Ebola Response MPTF webpage at:

<http://mptf.undp.org/ebola>