

Women's Peace and Humanitarian Fund (WPHF)

Project Document – Funding Window for WHRDs (Global)

I. Prodoc Cover Page

<p>Project Title: The Women's Peace and Humanitarian Fund Funding Window for Women Human Rights Defenders in crisis and conflict affected countries (Global)</p>	<p>PUNO: UN Women</p>
<p>Project Contact: Name: Margaret Muthama Entity: UN Women Title: Programme Coordinator for the Window for Women Human Rights Defenders Email: margaret.muthama@unwomen.org</p>	<p>Implementing Partner(s): N/A</p>
	<p>Country: Global</p>
	<p>Total amount: 4,105,165 1st tranche (2022) : USD 262,685 2nd tranche (2023) : USD 372,446 3rd tranche (2024) : USD 599,844 4th tranche (2025) : USD 716,942 5th tranche (2026 tentative: subject to resource mobilisation): USD 962,536 6th tranche (2027 tentative: subject to resource mobilization): USD 1,190,712</p>
	<p>Proposed Project Start Date: 01 April 2022 Proposed Project End Date: 31 December 2027 Total duration (in months): 69</p>
<p>WPHF's Outcome the project is contributing to WPHF's Outcome 5 (<i>Protection of Women and Girls</i>): Ensuring that women and girls' safety, physical and mental health, and security are assured, and their human rights respected.</p>	
<p>WPHF's Outcome indicator the project will be reporting on: 5.4 Number of WHRDs supported through flexible funding (type of support, age group, country of origin)¹</p>	
<p>Name of PUNO Representative: Title: Director, Policy Division, UN Women</p>	

¹ To ensure protection of WHRDs and to ensure a limited reporting burden for WHRDs, WPHF and partner NGOs will be responsible for reporting against this indicator.

Signature : 

Date & Seal: Shoko Ishikawa, Deputy, Director,
PPID • Policy, Programme and Intergovernmental Division

24.04.25

II. Context and Situation Analysis

Women Human Rights Defenders (WHRDs) who promote peace and defend human rights in conflict and crisis affected settings face many threats and challenges. They challenge systems linked to violence, question political power structures and aim to change gendered power relations to build more inclusive and lasting peace.

However, as highlighted in the 2023 report of the Secretary General on Women, Peace and Security the worrisome trend of widespread attacks against women human rights defenders in conflict-affected settings continues. In 2022, the Office of the United Nations High Commissioner for Human Rights (OHCHR) reported 34 killings of WHRDs in conflict affected countries; this likely a fraction of the real number of cases. Other forms of harassment and intimidation persist including on digital platforms, and these often manifest into “violence in real life”. In many instances WHRDs are forced to flee their country, often without support to cross borders. A study conducted by VOICE18 revealed that 42% of Afghan WHRDS did not receive any assistance during their resettlement process. The resettlement process is often lengthy and convoluted; Yemeni WHRDs are faced with protracted displacement as they await confirmation of their refugee status, leaving them unable to work and move on with their lives².

Women Human Rights Defenders continue to stand strong across the globe in the face of grave threats, that in some instances lead to fatality among WHRDs. In Afghanistan, WHRDs have continued to advocate against the Taliban’s “widespread and systematic discrimination of Afghan women and girls”. In Yemen, WHRDs have continued to push back against the Houthis efforts to restrict women’s movements in the face of detention and “trumped up” charges against adultery. In Syria WHRDs have raised concerns since the end of Bashar al-Assad’s dictatorship, that women will be excluded from processes related to political transition, peace and reconciliation. In Mali extremist groups continue to seek removal of women from the public sphere and prevent girls from accessing their right to education. War is continuously waged on women’s bodies, with the UN reporting 2,455 cases of conflict related sexual violence in 2022, with the DRC reporting the highest incidents of CRSV (in the first 3 months of 2023, over 20,000 survivors of sexual violence sought support services in Ituri, North and South Kivu, DRC). As the war in Sudan continues, civil society organisations have documented hundreds of cases of conflict related sexual violence, many of whom continue to lack access to “comprehensive and systematic delivery of the full range of sexual and reproductive health services”. WHRDs from conflict and crises settings who collaborate with the UN continue to face reprisals: according to the Secretary General’s report on WPS since 2018, over a third of women briefers at the UN Security Council have been subjected to reprisals and intimidation.

The SG’s report on WPS in 2023 emphasised the “importance of disability inclusion in prevention and protection strategies” and in 2024, the Window for WHRDs at the WPHF hosted an event focused on the application of the LNOB principle, where WHRDs from Myanmar, Sudan, Venezuela, Syria, the Ukraine and Afghanistan had a unique opportunity to present the barriers, obstacles and challenges that they continue to face on the ground in their diverse identities, and share recommendations for women, peace and security stakeholders to strengthen the ecosystem of protection and advocacy support for WHRDs in conflict and crises affected contexts.

When WHRDs face targeted violence, it is often with the aim of discrediting their work for justice and human rights, and deterring or forcibly excluding them from decision-making processes. Additionally, WHRDs’ contributions to peace in their communities, during and after conflict, whether through assisting victims of

² [n2327908en.pdf](#)

violence, or negotiating with different armed actors and contributing to peacebuilding initiatives are often ignored. This lack of recognition can limit their access to solidarity organizations and networks, international institutions and donors, and increase their security threats.³ Without WHRDs' perspectives in decision-making in conflict and crisis settings, it is less likely that provisions related to the protections of women's and girls' rights will be included in any peace process or political settlement.

Following numerous calls for action for a dedicated funding mechanism for WHRDs, and for Member States and the UN to do more to protect and support WHRDs, while ensuring access to safe spaces for their voices to be heard, the WPHF, with the generous support of the Government of Norway, and the Government of Germany established and operationalized the WPHF WHRD Window. The 2023 UN Secretary General's report on WPS acknowledges the efforts of the United Nations to address the plight of WHRDs, making specific reference to the WPHF, and the launch and operationalization of the Funding Window for Women Human Rights Defenders, which has to date provided support to 676 WHRDs, and 1,912 of their dependents.

In his 2023 report on WPS the UN Secretary General urged the international community to pay consistent attention to the threats and violence faced by women human rights defenders, which remains on the rise. Despite gains made in the implementation of the WPS agenda, we are yet to attain the full, equal, meaningful and safe participation of women in building and sustaining peace. The SG urges the international community in his 2023 report on WPS to strive for this as "the norm, and not an afterthought". Specific recommendations from the 2023 SG report on WPS include the need for additional measures to support WHRDs to undertake their work in a safe and sustainable manner, to facilitate the evacuation and relocation of WHRDs at immediate risk, and to implement strategies for long term support for WHRDs in exile.

Fully operational since September 2022, the WPHF Window for WHRDs continues to address funding gaps for the protection and participation of WHRDs from/working in conflict and crisis-affected contexts. The window continues to serve as a unique mechanism with capacity to respond to the increasing needs of WHRDs in a responsive, flexible and adaptive manner. Importantly the WPHF WHRD Window provides in many instances life saving support to WHRDs, and enables them to continue their activism in the defense of human rights, and the rights of women and girls, and to support the safe participation of WHRDs in decision-making and advocacy spaces at the national, regional and international level, working towards just and inclusive peace.

III. Purpose and Functions of the WHRDs Window

The WHRDs Window's overall objective is to ensure that WHRDs, whether in their native countries or exile, have access to adequate protection support mechanisms, as well as to guarantee their secure and equal participation in key advocacy events/meetings to promote women's rights and reflect women's needs in political decision-making, peacebuilding, and humanitarian response.

Type and modalities of support provided

The WHRDs Window supports these initiatives through:

- **A safety net** through flexible funding for WHRDs to cover urgent costs, such as short-term livelihood and protection expenses including (but not limited to): equipment (computers, printers, security cameras), internet and mental health care services. Funding under this stream is provided for a maximum of USD

³ Women Human Rights Defenders International Coalition, Global Report on the Situation of Women Human Rights Defenders. p. 27 and 28, 2012.

10,000 to meet needs covering up to a 6 months timeframe. The support can be renewable, based on reassessment of the situation.

- **Advocacy support** through direct logistical assistance to arrange and cover logistical expenses (e.g. transportation, visa fees, accommodation, translation, daily subsistence allowance, accessibility for WHRDs with disabilities) to attend, either individually or as a delegation, a meeting, event or decision-making process, at the national, regional or international level, which contributes to their advocacy work for human rights and peace. Funding under this stream is provided for up to five working days (excluding travel days) and this support is potentially renewable.

The Safety Net is provided to WHRDs through NGO partners of the window, following a screening undertaken by the WHRD Unit and verification and validation by the NGO partners of the Window. As of December 2024, the WPHF WHRD Window has partnered with eight INGO partners, all of whom have been selected through a Call for Proposals launched in 2022 (5 partners) and 2023 (3 partners). Following selection, a Harmonized Approaches for Cash Transfers Micro Assessment (HACT) and Prevention of Sexual Exploitation, Abuse and Harassment Assessment (PSEAH) were conducted, as required by the Multi-Partner Trust Fund Office (MPTFO). The current coverage of countries in conflict and crises is comprehensive, especially following the addition of 3 INGO partners with expertise and reach in the Asia Pacific Region, including Myanmar.

For Advocacy Support, assistance is provided directly by the WHRD Unit. Requests are shared with an advisory Advocacy Committee to avoid duplication and increase opportunities for more visibility and influence. The WHRD window continues to convene human rights stakeholders, including our INGO partners, and WHRDs who have received support from the window to inform the window's advocacy support at the regional and national levels.

In addition to this, the window will facilitate dialogues and briefings between WHRDs who receive support from the WPHF WHRD Window and member states, UN entities and agencies, and other human rights stakeholders frequently during the project time frame. For example, in February 2025, the WPHF WHRD Window is sponsoring 10 Afghan WHRDs to participate in the 58th session of the Human Rights Council in Geneva. During their visit to Geneva, the WPHF WHRD will facilitate opportunities for the Afghan WHRDs to meet and convey their advocacy messages directly to member states and UN agencies and entities including UN Women and the Office of the Special Rapporteur for the Situation of Human Rights in Afghanistan.

In 2026-27 the Window will also seek to partner with an INGO or CSO that can provide capacity building support to WHRDs in the lead up to their participation in national, regional and international events, to ensure that their advocacy efforts are strategic and impactful in the lead up, during and after engagement in advocacy platforms. This is in line with the 3rd function of the WPHF to influence policies on funding mechanisms for the implementation of the WPS agenda, with a specific focus on conflict and crises contexts.

Geographical scope

This Window focuses on crisis and conflict affected countries,⁴ and targets WHRDs in and from countries facing conflicts and crisis, including:

- o WHRDs at risk inside their native country;
- o WHRDs relocated to a host country; and
- o WHRDs relocated to a transit country.

⁴For the list of matters of which the UN Security Council is seized please see UNSC Resolution S/2022/10: <https://documents-dds-ny.un.org/doc>

Timeline for support

The safety net support is short-term in nature. It is granted for a period of one to six months, on an exceptional renewable basis. This allows for flexibility and reassessment of the situation and needs, as individual situations and wider crisis contexts evolve. The advocacy support is limited to participation in a maximum of 2 events per calendar year to ensure equal access of WHRDs to the logistical support provided to a diverse range of WHRDs from different backgrounds, conflict and crises contexts, based on available funds.

IV. The WPHF Funding Window for WHRDs Unit

The Funding Window for WHRDs includes:

- Advisory and technical support from OHCHR;
- An advisory Advocacy Committee, composed of UN Women, OHCHR, and civil society networks (coordinated through the NGO Working Group on Women Peace and Security), for increased coordination and amplification of advocacy opportunities; and
- A WHRD Unit within the WPHF Secretariat, to implement everyday activities required for the Window's functioning.

Specifically, the WHRD Unit has the following functions:

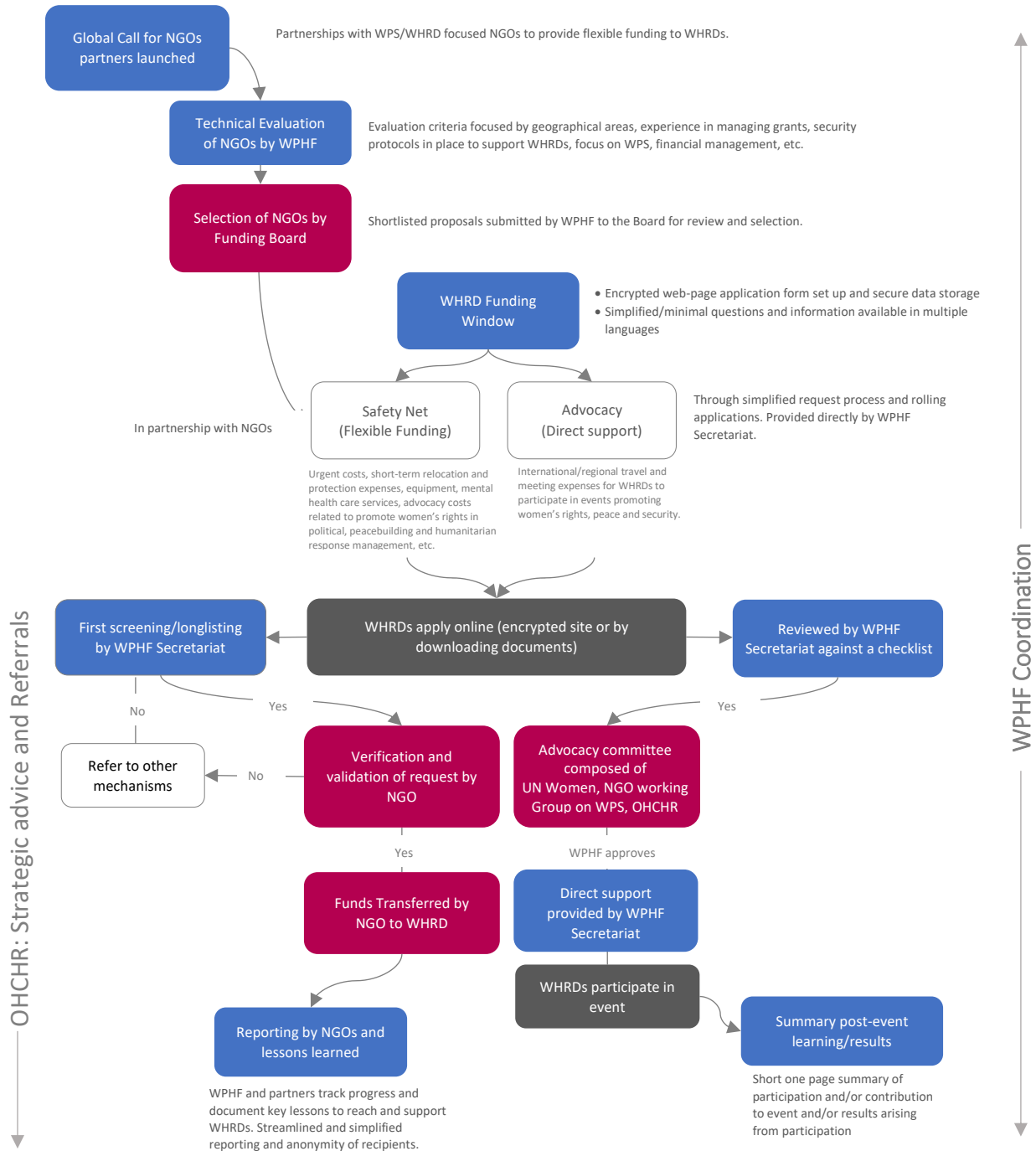
- Coordinate between different stakeholders, including implementing partners, UN entities and CSOs
- Manage applications for both streams of support
- Manage direct implementation of the Advocacy Support
- Manage partnerships with NGOs for Safety Nets
- Provide for risk management, monitoring and evaluation and reporting on the window
- Document lessons learned and best practices
- Monitor and review the risks and mitigation strategies on a regular basis

The WHRDs Unit is overseen by the Head of the Secretariat (P5) with support from WPHF Deputy Head (P4). The staffing dedicated to the WHRDs Unit (Global) is composed of:

- 50 % of the time of a WHRD Window Program Specialist (P3), to lead on overall management of the Window
- A Programme Analyst (P2) to provide technical inputs to the development of the WPHF WHRDs Window strategies, partnerships, and communications efforts, to support the advocacy of the window and to contribute to the reporting, monitoring, and implementation of the Window.
- A Programme Analyst (P1) to provide technical inputs to the development of the WPHF WHRDs Window strategies, partnerships, and communications efforts, to support the advocacy of the window and to contribute to the reporting, monitoring, and implementation of the Window.
- An administrative assistant for travel support (G5) (cost-shared with the Secretariat), to provide operations leadership for the Window.

The window recruits additional consultants or UN Volunteers to address specific needs.

Overview of the window process



V. Results and Resources Framework

The Window's intended outcome is to increase access of WHRDs in crisis and conflict settings to protection mechanisms and advocacy opportunities, for their safe participation in the promotion of human rights and peace. This is linked to the WPHF's Theory of Change and Outcome 5: Enhanced safety, security, and mental health of women and girls and their human rights respected.

This will be achieved through the following three outputs:

Output 1.1. Efficient, effective, and timely management and implementation of the Funding Window for WHRDs is ensured

The Unit will consult OHCHR, as a UN agency with protection expertise, to provide advisory support throughout implementation, and consult partner NGOs, to ensure appropriate processes are respected.

The Unit will coordinate and manage all day-to-day tasks necessary for the smooth management and delivery of the Window, and ensure compliance with the Window's rules and procedures as approved in the Concept Note.

The Unit will review all requests submitted through the secured WPHF web portal (and other requests by email). The Unit will refer cases that it cannot support to other relevant mechanisms.

- For the Safety Net applications, the Unit will assess the requests and share them with relevant NGO partners for verification and validation in a timely manner.
- For the Advocacy Support, the Unit will assess the requests and share them with the Advocacy Committee for feedback on the advisability of support, as well as to identify additional entry points for more influence and mobilization. Requests approved by the unit will be implemented directly by the Unit through logistical support.

The Unit will ensure coordination with and between different stakeholders involved including UN Women, OHCHR, networks of women human rights defenders, international and local civil society organizations, the Office of the UN Special Rapporteur on Human Rights Defenders, as well as other existing mechanisms supporting HRDs. The Unit will coordinate and consult NGO partners on a monthly basis, as well as review their narrative quarterly reports, to ensure coordination and quality and timely support is provided to WHRDs. In 2023, the Unit is recruiting an additional NGO partner to support implementation in the Asia-Pacific region.

The Unit will be responsible for reviewing and monitoring risks on a regular basis, following the risk table and update the risk matrix every quarter. (see page 9).

Output 1.2. Monitoring and evaluation of best practices and lessons to ensure flexible and responsive support to meet evolving needs of WHRDs is generated and utilized

The WHRD Window will continually monitor the Window to track how many WHRDs have been supported and types of support provided through the NGO quarterly reporting, as well as evaluate the efficiency of the processes to provide rapid and flexible financing to WHRDs. It will also carry out period time analysis, threats, and on reasons for 'rejections'. While still maintaining anonymity of WHRDs, the Window will also collect profiles and showcase the Window's impact on their lives and work through reports and communications.

Specific sub-indicators will be considered for this Funding Window under WPHF outcome area 5: “*Enhanced safety, security and mental health of women and girls’ and their human rights respected,*” against which partner NGOs will report under the Safety Net Stream and by which the WHRD Unit reports for the Advocacy Stream. These are outlined in the WHRDs Window Monitoring, Evaluation and Reporting Strategy (2024 updated). NGOs will report against Safety Net indicators on a quarterly and annual basis, and document their impact, lessons learned and best practices, in order to adapt programming on an iterative basis.

Data protection of WHRDs is at the center of this Window’s processes and communications, ensuring a ‘do no harm’ approach is applied throughout implementation. To ensure protection of the WHRDs and limited the burden on them, only WPHF and partner NGOs will be responsible for reporting against WPHF indicators. Short anonymous post-support surveys and telephone interviews with WHRDs will be conducted under the Advocacy Stream, following all data protection and privacy parameters, to capture lessons learned in supporting them, including how the support has facilitated/helped with protection and how it can be improved for other recipients in the future. Under the Safety Net Stream, the Unit will explore the design and administration of an impact survey jointly between WPHF and partner NGOs, focused on capturing the results and impact that the Window has had on the lives and work of WHRDs, while also ensuring minimal burden to WHRDs and through secure means.

The Unit will be responsible for incorporating findings from NGO reports and data into a global Window report on an annual basis. The Unit will continually review and analyze challenges and recommendations, to ensure these are integrated into iterative program adaptations, and the Window remains flexible and responsive to emerging needs.

A participatory approach

The WHRD Unit will organize twice a year in person/online consultations with NGO partners, WHRDs, CSOs and UN agencies, to collect and discuss challenges, best practices and lessons learned. The Unit will incorporate associated recommendations into the design and processes of the window, following the Funding Board’s approval. The WHRD Unit will amplify the best practices and lessons learned resulting from these conversations with a variety of actors, including through its annual report and participation in events.

Output 1.3. Advocacy and visibility to increase access and support to WHRDs protection and participation on the global stage is promoted

Global advocacy support

In addition, to influence the international community to further support and recognize both the contributions of WHRDs to human rights and peace, as well as the risks that WHRDs face, the WHRD Unit will leverage its platform and NGO partnerships to increase visibility and spaces for WHRDs’ safe participation and influence.

The Unit will screen all applications under the Advocacy Support Stream and share relevant ones with the Advocacy Committee for coordination of efforts and recommendations. Based on the feedback, the Deputy Head of WPHF Secretariat will approve or reject the request. The WHRD Unit will provide direct logistical support to the WHRDs and connect them to other relevant stakeholders, to enhance their leadership and influence.

Additionally, all WHRDs supported through WPHF will be invited to engage - at their discretion and to the extent they feel comfortable - in institutional capacity sharing, peer exchange and global mentorship opportunities provided by the WPHF Global Learning Hub, with the aim of strengthening their strategic advocacy, communications and other skills relevant to their work.

Communication, visibility and dissemination

WPHF will disseminate information on the Window with relevant stakeholders in the UN, civil society, donor government representatives (and relevant embassies) and other stakeholders, as appropriate, to encourage applications, drive visibility, and refer cases to the Window. Building trust among WHRDs and applying 'do no harm' principles is central to the implementation of the Window and its communication/visibility efforts.

VI. Risks and Mitigation Measures

TYPE OF RISK	Likelihood 5=Very High 4=Likely 3=Possible 2=Unlikely 1=Rare	Impact 5=Extreme 4=Major 3=Moderate 2=Minor 1=Insignificant	RISK MITIGATION MEASURES
Operational and Implementation Risks			
<p>Support provided under the WPHF WHRDs Window is delayed and does not respond to WHRDs emerging and urgent needs:</p> <ul style="list-style-type: none"> Delays in financial transfers to INGOs partners under the Safety Net Stream and subsequent delays in supporting applications received. For advocacy support the WHRDs window disburses funds through means that are cumbersome and not accessible to WHRDs from/working in conflict and crisis-affected contexts WPHF WHRDs Window develops a reputation for not being able to respond as rapidly as and responsively as claimed in certain regions. WPHF WHRDs window INGO partner is not able to consider the case, as the request is not aligned with the costs that can be covered. Applicants do not respond to INGO partners' email when contacted to validate their applications, because applicants do not recognize the connection between the WPHF WHRDs window and the INGO partner. Consequently, the application gets rejected for impossibility to verify the case. Applicants / References' lack of access to communications tools, including internet, delay WHRDs Window Unit and INGO Partners verification processes. 	Unlikely (2)	Major (4)	<ul style="list-style-type: none"> Clear, quick and more adequate procedures for release of second tranche and cost extensions to Safety Net INGO partners are agreed, set up and communicated to INGO partners by the WHRDs window unit. UN Women procurement/operations processes and bottlenecks are reviewed and discussed with UN Women Headquarters to improve travel support advocacy stream. WPHF WHRDs window unit requests WHRDs to apply for advocacy support at least 6-weeks before the event takes place to ensure there is enough time to provide adequate support. Approval criteria are regularly reviewed and adjusted with INGO partners, as necessary, in response to the types and numbers of applications, as well as percentage of cases approved. The WPHF in 2025 will embark on a process to digitize the currently manual review of applications received by the 3 windows, with a specific focus on the WHRD Window due to the high volume of applications received in 2023 and 2024. WHRDs window unit regularly reviews geographical scopes and WHRDs costs covered by each INGOs to identify gaps and ensure the window can respond to requests and support is available where should be. Names of WPHF WHRDs Window INGO Partners are available online and, if applications are transferred to INGO partners' review, WHRDs window unit informs WHRDs that they will be contacted by our INGO partner on the status of their application under the safety net stream. WPHF WHRDs window unit transparently and directly communicates with applicants of the advocacy stream in order to manage expectations on process to follow and timelines for DSA disbursement and mitigate risks of independent booking arrangements. Applicants are also promptly informed via email when delays are expected in support provision.
<p>WHRD's increased risks due to/following WPHF 's support.</p> <ul style="list-style-type: none"> WHRDs from/working in conflict and crisis affected contexts may face 	Rare (1)	Major (4)	<ul style="list-style-type: none"> Conflict sensitive approach is employed; utilized simple processed to avoid burden on applicants is used; protected data and information, with careful dissemination of information, including information on the amount of financial support to be provided, which is only communicated to the WHRD.

<p>further risks and threats during and/or due to the support provided.</p> <ul style="list-style-type: none"> • WHRDs from/working in conflict and crisis affected contexts supported under the Advocacy Support stream face reprisals after taking part in events/meeting/decision making processes. • WHRDs from/working in conflict and crisis affected contexts supported under the Advocacy Support stream might be at risk for traveling without Mahrams. 			<ul style="list-style-type: none"> • Public reports/messaging on this funding do not mention names, geographical location, or sensitive information, unless approved by the WHRDs. • All INGO partners providing safety net support undergo a PSEAH assessment every 24 months and the WHRDs window unit monitors the implementation of recommendations. Among others, the PSEAH assessment requires that INGO partners hold training for all personnel and have mechanisms and procedures in place to report SEAH allegations. • WPHF WHRDs window unit and INGO partners regularly exchange on these cases and directly check on/with WHRDs to make sure prompt context-adjusted actions can be taken if new risks arise, • In the provision of advocacy support process to assess, mitigate and follow up on reprisals is used, including for cooperation with OHCHR, and redirection to the WPHF WHRDs Window Safety Net stream when needed. • In the provision of advocacy support, WHRDs window unit applies option for funding accompaniment by male guardians to Afghan women (known as Mahrams), to increase feasibility and protection of WHRDs wishing to attend events. Before her travel is approved, the WHRD is asked to clarify whether for her safety she should be accompanied by a Mahram. • The WHRD window unit exchange regularly with other WPHF funding streams, the UN Women Country Office and implementing INGO partners, to review evolution of political/security risks that may affect applicants.
<p>WPHF WHRDs Window is not accessible to grassroots WHRDs from/working in conflict and crisis affected contexts and/or living in situations of vulnerabilities or with intersecting forms of marginalization i.e. displacement, age, sexual orientation, disabilities, ethnicities, religious minority.</p> <ul style="list-style-type: none"> • Access to support is limited to a capital level/elite group of well-connected women human rights defenders. • WHRDs working at the local level might not be able to provide a well-known reference person, as they might not have particular connection to more established international/national organizations. 	<p>Possible (3) (although level of risk varies by region)</p>	<p>Major (4)</p>	<ul style="list-style-type: none"> • Documents and information are publicized in six languages. • Wide dissemination of information through webinars, social media posts, information session and meetings with multiple types of stakeholders are shared with INGO networks, to encourage applications from outside main cities and WHRDs from different backgrounds and living in different conditions. • Information sessions for UN Country Teams in Conflict and Crises Affected Contexts will be held in collaboration with the Window and the Funds UN partners, including UN Women and UNFPA, and the RC's office to ensure wider and more comprehensive dissemination of information regarding the protection and advocacy support that the window avails to WHRDs. • Application templates (in six languages) are revised in December 2022 and December 2023 to ensure simplicity of the application is balanced with the need for clarity on essential information. • Profiles of supported WHRDs are regularly reviewed to improve targeted outreach to rural women working at local community level and in different living conditions. • Under advocacy support stream, WPHF WHRDs Window Unit and the Advocacy Committee use prioritization criteria for WHRDs from/working in conflict and crisis affected contexts living with multiple intersecting forms of marginalization.
<p>Contextual Risks</p>			

<p>Mistrust of the United Nations impacts the WPHF WHRDs Window's reputation as a trusted funding mechanism for WHRDs from/working in conflict and crisis affected contexts.</p> <ul style="list-style-type: none"> • WHRDs do not apply to WHRDs window because they are against statements and/or actions taken by other UN agencies to which WPHF is perceived to be linked to. • Following approval of their advocacy application, WHRDs are not granted visas or accreditations to participate in events. • For advocacy support, WHRD might not feel at ease communicating/sharing information with people they do not know or have not been introduced to. 	<p>Rare (1)</p>	<p>Moderate (3)</p>	<ul style="list-style-type: none"> • WPHF WHRDs Window unit uses every public/closed door, formal and informal, opportunity to communicate on its values, grantmaking principles and mandate focused on mobilizing and channeling funding to WHRDs and works to strengthen its partnerships with trusted and experienced INGOs working with WHRDs. • When appropriate, WPHF WHRDs Window publicly emphasizes how civil society organizations have equal participation and decision-making powers over the Fund's strategic direction and funding decisions as Board members of the WPHF. • WPHF WHRDs Window considers cultural sensitiveness and makes sure that the organizational culture and internal processes effectively empower women human rights defenders. • Each application is assigned to a specific staff member to better communicate and facilitate partners' communications.
<p>Challenges related to financial operations in crisis context delay or impede the Window to operate efficiently.</p> <ul style="list-style-type: none"> • WHRDs from/working in conflict and crisis affected contexts pay large fees to open and close accounts in USD, just to receive transfers from the WPHF WHRDs Window and its INGO Partners. • Bank accounts of WHRDs frozen and impossibility to withdraw cash. • Authoritarian regimes, DeFacto Authorities, Occupying Authorities might impose increasing scrutiny on sources of international funding, even with alternative money transfer mechanisms. 	<p>Unlikely (2)</p>	<p>Major (4)</p>	<ul style="list-style-type: none"> • INGO partners review and adapt verification/disbursement processes to increase efficiency and speed of disbursement to WHRDs and overall support under the safety net stream. • Alternative transfer options such as Money Gram, Dahabhsiil, travel checks, the Hawala system, as well as other informal ways of collecting support in cash as used, such as transfers through relatives or friends in third or bordering countries. • Under the safety net stream, INGO partners collaborate through monthly calls in sharing best practice on safe and efficient funds transfer mechanisms, to speed up disbursements into Afghanistan and other countries. • WPHF WHRDs window unit works together with UN Women Country Offices on localized, flexible banking options. • For Safety Nets stream, INGO partners work through/with their regional/local CSOs networks to facilitate transfers via these organizations.
<p>Financial Risks</p>			
<p>Duplication of Funding</p> <ul style="list-style-type: none"> • Applicants benefit from multiple sources of funding to address the same risks. 	<p>Unlikely (2)</p>	<p>Minor (2)</p>	<ul style="list-style-type: none"> • The WHRD Window Unit INGO partners consult and coordinate with other UN and INGO entities regarding previous or parallel funding to WHRDs. • Information on the INGO partnerships is included on the website, so it is clear which organizations are supporting Safety Nets implementation, and to reduce the number of applications these organizations receive in parallel from the same applicants. • Receiving funding from another source is not eliminatory. However, the applications shall include information on how funding is complementary and not a duplication to WPHF's support.
<p>Funds being diverted from eligible WHRDs from/working in conflict and crisis affected contexts</p> <ul style="list-style-type: none"> • Fraudulent applications selected. 	<p>Unlikely (2)</p>	<p>Minor (2)</p>	<ul style="list-style-type: none"> • Under the safety net stream, INGO partners conduct due diligence and a thorough verification of each application to verify the identity of the woman, threats and her role in human rights activism, including through consultations with references.

<ul style="list-style-type: none"> • Third parties request funding in exchange for being listed in an application as third parties. • Funding is diverted to groups on the UN Sanctions list. 			<p>Under the advocacy support stream, the WHRD Window Unit conducts due diligence consultations with members of the Advocacy Committee.</p> <ul style="list-style-type: none"> • In cooperation with other protection mechanisms, a list of individuals/ organizations with a proven record of sending fraudulent applications will be developed. • The process of release of funds and potential risks of money transfers are reviewed and discussed in the monthly coordination meetings with INGOs. • Application forms state that being a reference person should be on a voluntary basis and unpaid. • INGO partners do not disclose information on the amount of funds granted to anyone other than the WHRD supported. • All INGO partners are required to submit audited accounts at the end of each project period, and the WPHF will undertake regular spot checks for increased oversight of budget expenditure as per project documents and approved budgets.
-----------------------------------------------------------------------------------------------------------------------------------------------------------------------------------------------------------------------	--	--	------------------------------------------------------------------------------------------------------------------------------------------------------------------------------------------------------------------------------------------------------------------------------------------------------------------------------------------------------------------------------------------------------------------------------------------------------------------------------------------------------------------------------------------------------------------------------------------------------------------------------------------------------------------------------------------------------------------------------------------------------------------------------------------------------------------------------------------------------------------------------------------------------------------------------------------------------------------------------------------------------------------------------

VII. Partnerships

The WPHF Funding Window for WHRDs will continue building on the longstanding relationship of the WPHF, UN Women and its NGO partners with women's organizations, particularly WHRDs that act as peace activists, to strengthen linkages and partnerships for flexible support to WHRDs promoting human rights and peace.

Close collaboration between WPHF, UN agencies (including UN Women and OHCHR), NGOs, and Member States will ensure coordinated efforts for the protection of WHRDs, and their increased participation in decision-making and advocacy spaces.

WPHF, as a UN multi-partner trust fund, will continue to mobilize its partners and build on its strategic position in the UN and the diplomatic community to support the work of WHRDs. The private sector is also a partner of WPHF, and will be engaged as a key stakeholder and source of additional support.

Annex A – WPHF WHRDs Unit Results Framework

Results	Indicators	Means of Verification/ Sources of Information	Activities
Impact <i>Enhanced advocacy, protection and well-being of women and young women human rights defenders from crisis and conflict settings.</i>	1. Percentage of WHRDs that have adopted new protective measures, including self-care strategies (by country of origin and age group) 2. Degree to which WHRDs have greater influence and agency in advocating for the promotion of human rights and peace (by country of origin and age group) 3. Degree to which WHRDs report reduced risks as a result of protection grants	WHRD Impact Survey (annually) Post-Support Advocacy Surveys and Interviews six months after initiative WHRD Impact Survey (annually)	
Project Outcome: Increased access of WHRDs in crisis and conflict settings to protection mechanisms and advocacy opportunities, for their safe participation in the promotion of human rights and peace	1. Number of WHRDs supported through Safety Net funding (by age group and country of origin) Baseline: 38 (2022) Target: N/A 2. Number of WHRDs supported through Advocacy Support (by age group and country of origin) Baseline: 19 (2022) Target: N/A	WPHF Web-Portal, NGO Reports WPHF Management Information System	
Output 1.1 Efficient, effective, and timely management and implementation of the WHRD Window is ensured	1.1a Renewal of partnership agreements with 8 existing NGOs partner(s) Baseline: 0 (2022) Target: 8 (2027) 1.1b OHCHR partnership is continued for quality technical and advisory support Baseline: 0 Target: partnership continued 1.1c Number of requests received and screened (by stream) Baseline: 333 (2022) Target: N/A	WPHF website and encrypted page, proposal documents, Internal operational manual for logistical support Call for Proposals, NGO evaluations OHCHR agreement Web-portal, Proposal documents	1.1.1 Update/translate required documents for the Window, including simplified applications, checklist/evaluations and guidance 1.1.2 Updates to encrypted web-page/web-portal and electronic application process 1.1.3 Select 1 new NGO partner and undertake HACT assessments 1.1.4 Coordinate with OHCHR for technical and advisory support 1.1.5 Coordinate/manage day-to-day tasks for implementation of the Window 1.1.6 Review/screen requests received for each stream 1.1.7 Coordinate with Advocacy Support Committee on recommended direct support requests. 1.1.9 Conduct regular and ongoing monitoring of risks, including for WHRDs supported through the advocacy stream 1.1.10 Conduct regular and timely coordination meetings with NGOs

	<p>1.1d Types of additional support provided to WHRDs Targets:</p> <ul style="list-style-type: none"> Referral process for WHRDs, including those who do not qualify for support under the WHRD Window (2025) Partnership with an existing or new INGO partner to provide capacity support to WHRDs engaging in high level national, regional and international advocacy platforms (2026) Dedicated partner to provide protection planning support to WHRDs who face reprisals following engagement in advocacy platforms including with the UN <p>1.1e Risk and mitigation strategies table is reviewed and revised, as needed Target: Quarterly</p>	<p>WPHF Management Information System</p> <p>Risk and mitigation matrix</p> <p>Call for Proposals, NGO evaluations</p> <p>Call for Proposals, NGO evaluations</p>	<p>1.1.11 Develop a process to share information and opportunities to WHRDs who do not qualify for support from the Window</p> <p>1.1.12 Capacity building for WHRDs on strategic advocacy efforts (demand based)</p>
<p>Output 1.2 Monitoring and evaluation of best practices and lessons to ensure flexible and responsive support to meet evolving needs of WHRDs is generated and utilized</p>	<p>1.2a Participatory review and consultation process with NGOs, WHRDs, CSOs and UN agencies conducted Baseline: 0 (2022)</p> <p>Target: 2 Surveys per year (1 impact survey under SFTN and one post-support advocacy survey (six months after) and 3 workshops for partners in 2025, 2026 and 2027)</p>	<p>NGO reports, WHRD anonymous survey</p>	<p>1.2.1 Conduct in person workshop annually with NGO partners, WHRDs, CSOs and UN agencies</p> <p>1.2.2 Conduct global Impact surveys for 2025, 2026 and 2027 focused on capturing results and impact</p> <p>1.2.3 Review quarterly narrative reports from NGO partners</p> <p>1.2.4 Conduct post-support advocacy surveys and interviews focused on capturing results</p> <p>1.2.5 Collaborate with other organizations and networks on analysis of WHRD needs</p>
<p>Output 1.3 Advocacy and visibility to increase access and support to WHRDs protection and participation on the global stage is promoted</p>	<p>1.3a Number of information sessions conducted with various stakeholders to disseminate information on the WHRD window Baseline: 4 (2022) Target: 4-5 (per year)</p>	<p>Meeting minutes, event invitations, event concept notes</p> <p>WPHF Management information System</p>	<p>1.3.1 Conduct information sessions with UN agencies and donor governments to disseminate information on window across relevant networks</p> <p>1.3.2 Facilitate training for WHRDs on protection and advocacy in coordination with WPHF's COP/L-Hub⁶.</p> <p>1.3.3 Facilitate conversation between UN, Member States and WHRDs to raise awareness on the WHRDs Window among donors and potential applicants.</p>

⁶ To ensure protection, only WHRDs who have provided consent to be included in the Global L-HUB listserv which informs CSOs and activists of capacity strengthening opportunities will be tracked.

	<p>1.3b Number/Type of advocacy and visibility or events conducted to increase visibility and awareness on the needs and roles of WHRDs in the full implementation of the Women, Peace and Security Agenda, and the importance of the protection and promotion of human rights, including the rights of women and girls in conflict and crises settings Baseline: 3 (2024) Target: 6 per year</p> <p>1.3c Number of knowledge products produced across the Global and Afghanistan projects to influence international, regional and national policies on funding mechanisms for the WPS agenda, and the protection and promotion of the rights of women and girls in conflict and crises settings Baseline (across the Afghanistan and Global Projects): 3 (2024) Target: 3 (1 per year)</p> <p>1.3c Number of WHRDS who have accessed capacity sharing opportunities through the L-HUB⁵ Baseline: 0 (2022) Target: N/A</p>	<p>NGO Reports</p>	<p>1.3.4 Develop/update a Communications Plan to promote WHRD Window opportunities 1.3.5 Develop/update a Communications guidance note plan to promote WHRD Window opportunities 1.3.6 Work in close collaboration with WHRDs to amplify key advocacy messages, including through the WPHF social media platforms 1.3.7 Work in close collaboration with WHRDs to generate and disseminate knowledge products, including the WPHF WHRD Impact survey to key stakeholders to influence global, regional and national policies on funding mechanisms for the implementation of the WPS agenda, and the protection and promotion of human rights, and the rights of women and girls in conflict and crises settings.</p>
--	----------------------------------------------------------------------------------------------------------------------------------------------------------------------------------------------------------------------------------------------------------------------------------------------------------------------------------------------------------------------------------------------------------------------------------------------------------------------------------------------------------------------------------------------------------------------------------------------------------------------------------------------------------------------------------------------------------------------------------------------------------------------------------------------------------------------------------------------------------------------------------------------------------------------------------------------------	--------------------	-----------------------------------------------------------------------------------------------------------------------------------------------------------------------------------------------------------------------------------------------------------------------------------------------------------------------------------------------------------------------------------------------------------------------------------------------------------------------------------------------------------------------------------------------------------------------------------------------------------------------------------------------------------------------------------------------------------------------------------

⁵ Ibid.

Annex B - Budget per category

UNDG Categories	2022	2023	2024	2025	2026	2027	Total
1. Staff and other personnel costs	120,000	229,081	354,102	406,539	519,716	559,980	2,189,418
2. Supplies, Commodities, and Materials							
3. Equipment, Vehicles, and Furniture, including Depreciation							
4. Contractual Services	29,500	-	12,500	38,500	42,350	46,585	169,435
5. Travel	96,000	115,000	190,000	225,000	337,500	506,250	1,469,750
7. General Operating Expenses and other direct costs		4,000	4,000	-	-	-	8,000
Sub-total	245,500	348,081	560,602	670,039	899,566	1,112,815	3,836,603
8. Indirect Support Costs	17,185	24,366	39,242	46,903	62,970	77,897	268,562
TOTAL	262,685	372,466	599,844	716,942	962,536	1,190,712	4,105,165