



**Global
Disability
Fund**

Annual Report 2025



20th Celebrating
the Anniversary
of the CRPD



UN GDF has supported

100

countries to date on
CRPD implementation





” Acknowledging the importance of dedicated, predictable and flexible funding to support national implementation of the Convention on the Rights of Persons with Disabilities, particularly in developing countries, and recognizing in this regard the role of the United Nations Global Disability Fund, which serves as a United Nations pooled fund that channels resources to countries to promote and strengthen disability-inclusive policies and practices at all levels”

Extract from UN General Assembly resolution [A/RES/80/197](#) on the implementation of the Convention on the Rights of Persons with Disabilities, 22 December 2025.

©Zambia



Message from the UN Global Disability Fund Steering Committee Chair

The promise of disability inclusion is simple: persons with disabilities must be able to participate fully and equally in every aspect of society.

This principle lies at the heart of the Convention on the Rights of Persons with Disabilities (CRPD), which 20 years later continues to centre persons with disabilities as rights-holders entitled to full and equal participation.

However, for over 1 billion persons with disabilities worldwide, this promise remains unequally realized. Persistent barriers continue to limit access to education, information, cultural life and decision-making. Bridging the gap between commitment and implementation is an urgent global responsibility.

The UN Global Disability Fund (UN GDF) has emerged as a vital mechanism to meet this challenge. Since 2012, it has supported over 116 joint UN programmes in 100 countries across multiple regions, mobilizing over US\$100 million and reaching over 879 million persons with disabilities. As the only United Nations inter-agency pooled fund dedicated to advancing CRPD implementation, the fund brings together governments, UN entities, organizations of persons with disabilities and development partners around coordinated action. Its value lies in strengthening policies, financing solutions and supporting partnerships across humanitarian, development and climate efforts.

The progress presented in this report reflects the strength of this model. The Fund has helped countries move from fragmented initiatives to coherent and inclusive systems at scale. This is reflected in the multi-country programmes, as seen in Colombia and Kenya, which address the lack of publicly funded disability support and the burden of unpaid care work done by women and girls.

UNESCO was proud to serve as Chair of the UN GDF Steering Committee in 2025 and to contribute as an implementing partner. Through our country offices, we supported UN GDF programmes that advance equality and non-discrimination, inclusive systems and services, accessibility and accountability.

As the Fund embarks on its 2025–2030 strategy, it does so with a growing partnership base and strong momentum. By 2030, UN GDF aims to operate in 100 countries, support 85 national and regional programmes and directly reach 300 million persons with disabilities. This will require large-scale delivery, stronger partnerships, resource mobilization and sustained leadership from organizations of persons with disabilities.

As global challenges rise, no one must be left behind. UNESCO remains fully committed to this shared endeavour, especially following the adoption with acclamation of UNESCO's Disability Inclusion Strategy by its 43rd General Conference in November 2025. Together with the UN Global Disability Fund and its partners, we will work towards a future where inclusion is not an aspiration, but a reality for all.

Prof. Khaled El-Enany
Director-General, UNESCO



Message from the UN Global Disability Fund Director

The 20th anniversary of the Convention on the Rights of Persons with Disabilities (CRPD) is an important moment to reflect on progress and look ahead. Over the past two decades, disability inclusion has gained visibility, recognition and institutional support. Yet major challenges remain. Conflict, climate-related shocks, widening inequalities, pressure on development financing and growing humanitarian crises are creating one of the most demanding environments this agenda has faced. In this context, advancing disability inclusion – while safeguarding progress already achieved – is both an urgent priority and a shared responsibility.

Within this landscape, the UN Global Disability Fund (UN GDF) continues to play a distinct role. As the only United Nations interagency funding mechanism dedicated to CRPD implementation, UN GDF supports countries to translate global commitments into practical action. Its strength lies not only in what it funds, but in how it works: through country-led programming and a people-centred, rights-based approach that brings together governments, UN entities, organizations of persons with disabilities and other partners around shared priorities and coordinated action.

This partnership model reduces fragmentation, strengthens coordination and helps embed disability inclusion within broader development, humanitarian and institutional reform efforts, rather than treating it as a stand-alone issue. It also reinforces the principle of “Nothing about us without us” through the systematic participation of persons with disabilities and their representative organizations. UN GDF recognizes that meaningful participation requires not only consultation, but also resources, influence and leadership.

This report marks an important transition point in UN GDF’s journey. It reflects on achievements during the 2020–2025 strategic period, presents results achieved in 2025 and introduces UN GDF’s new strategic direction for 2025–2030. Together, these pages tell a story of growth, learning and adaptation in response to evolving global challenges and country demand. They also reinforce a central lesson: disability inclusion cannot remain peripheral to development and humanitarian action. When exclusion is overlooked,

institutions become less responsive, inequalities deepen and social and economic costs grow. Disability inclusion must therefore be embedded in how countries and institutions design policies, allocate resources and respond to today’s challenges.

This approach is especially relevant as the UN system seeks to deliver with greater coherence, efficiency and impact. UN GDF demonstrates the value of pooled, collaborative and country-responsive mechanisms that bridge the gap between policy ambition and tangible results. In this sense, UN GDF offers not only financing, but also a practical model for how the UN system and its partners can work together more effectively in support of national priorities and the lived realities of persons with disabilities.

The next strategic phase builds on this foundation while responding to an increasingly complex global context. It is an opportunity to deepen impact, strengthen inclusive systems and reinforce the leadership of persons with disabilities and their representative organizations in decisions that affect their lives. As this report demonstrates, there is a strong base on which to build. The task ahead is to ensure that progress on the rights of persons with disabilities is not only advanced, but protected from erosion and more firmly embedded within the policies, systems and decisions that shape societies. The UN Global Disability Fund remains committed to supporting that work.

Dr Ola Abualghaib

Director
UN Global Disability Fund



Acknowledgement of UN GDF donors

The work of the UN Global Disability Fund is made possible thanks to the generous contributions of its donors.



Australia



Canada



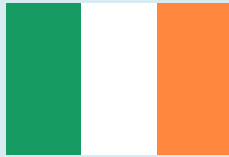
European Union



Finland



Germany



Ireland



Mexico



Norway



Spain



Sweden



United Kingdom



Contents

Executive summary	7
About the UN Global Disability Fund	15
2025 in review	20
UN GDF programme results in 2025	23
Outcome 1: National stakeholders are equipped with the knowledge and practical tools for disability-inclusive policies and systems	25
Outcome 2: Gaps in achieving the essential building blocks or preconditions to CRPD implementation are addressed	35
Outcome 3: National development plans and monitoring processes include disability mainstreaming	43
UN GDF's contribution to the United Nations Disability Inclusion Strategy	49
Partnerships, outreach and global influence	52
From commitment to impact: Results of the 2020–2025 strategy	58
Anniversary feature: From recognition to implementation	64
Navigating a changing global context	69
Looking forward to 2026	73
Annual financial report	77
Endnotes	104



Executive summary

UN Global Disability Fund - 2025 Annual Report





©Office of the United Nations High Commissioner for Human Rights, State of Palestine

About the UN Global Disability Fund

The UN GDF is the only dedicated UN Multi-Partner Trust Fund focused exclusively on advancing the rights of persons with disabilities through collective, system-wide action. Its central purpose is to translate the Convention on the Rights of Persons with Disabilities (CRPD) into operational reality by strengthening national institutions, public systems and coordinated UN support to ensure disability inclusion is embedded, sustained and scalable.

Established in 2012, UN GDF brings together UN entities, donors, organizations of persons with disabilities (OPDs) and civil society actors around a shared disability inclusion agenda. Since its inception, UN GDF has reached 100 countries, supported 116 joint programmes and mobilized over \$120 million, while also catalysing reform throughout the UN system, including through providing support to the development of the United Nations Disability Inclusion Strategy.

The UN Global Disability Fund is UN reform in action: coordinated financing, shared purpose, and local leadership at the center of change. UNDP is proud to host it, serve on its steering committee, and as an implementing partner.

Ms. Francine Pickup

UNDP's Deputy Director in the Bureau for Policy and Programme Support (BPPS)



Key achievements in 2025

In the final year of its 2020–2025 Strategy, UN GDF advanced implementation of the CRPD through national and multi-country programmes across development, humanitarian action, climate resilience, gender equality, care systems, urban development and governance. In 2025, UN GDF supported 37 national programmes and five multi-country programmes across 51 countries, bringing together governments, OPDs, United Nations entities and development partners to strengthen disability-inclusive systems, policies and financing.

Across the portfolio, 30,560 stakeholders were trained and supported to design, reform and implement disability-inclusive policies and systems aligned with the CRPD and the Sustainable Development Goals (SDGs). This included induction and systems-strengthening training delivered to countries in inception phase, alongside targeted technical support provided through joint programmes and global initiatives that are in full-scale implementation. In total, 1,387 OPD members were engaged in programme design, implementation, monitoring and policy dialogue processes, reinforcing the meaningful participation of persons with disabilities in development and humanitarian action.

Knowledge generation and evidence-building remained central to UN GDF’s work in 2025. Situational analyses were completed in 10 countries, generating critical evidence on barriers, gaps and opportunities for CRPD implementation. Among them was the landmark situational analysis in the State of Palestine, which informed more inclusive humanitarian and recovery planning by identifying the risks and exclusion faced by persons with disabilities in crisis settings. Across the portfolio, 120 tools, guidelines and knowledge products were developed to strengthen disability-inclusive governance, service delivery, accessibility, budgeting and accountability systems. Peer-to-peer learning and South-South cooperation also enabled 22 countries to exchange experiences and scale emerging good practices.

UN GDF programmes continued to strengthen the key preconditions required to accelerate CRPD implementation: equality and non-discrimination, inclusive service delivery, accessibility, CRPD-compliant budgeting and accountability. Programmes worked towards developing, revising, or reforming 12 laws, 17 policies, 4 Reviews, 28 regulations, and 37 system-level changes across 36 countries in areas such as social protection, health, sexual and reproductive health, education, employment, disability support services, early warning systems, urban disaster risk

©UNICEF Mozambique





©Office of the United Nations High Commissioner for Human Rights, Mozambique

reduction plans, accessibility standards and budgeting and financing processes, including the costing of disability action plans.

To drive systemic change, UN GDF works to mainstream disability inclusion within national and international development frameworks. In 2025, UN GDF programmes continued to engage with key national and UN-led processes: 59 percent of joint programmes actively contributed to Common Country Analysis (CCA) and United Nations Sustainable Development Cooperation Frameworks (UNSDCF) processes. In addition, 74% of UN GDF programmes developed inclusive national development planning and monitoring to advance the SDGs.

At the country level, 93 percent of UN GDF programmes have identified opportunities for persons with disabilities and OPDs to systematically engage in multi-stakeholder planning processes – key entry points for ensuring disability-inclusive national development plans.

UN GDF also continued contributing to implementation of the United Nations Disability Inclusion Strategy (UNDIS), supporting United Nations Country Teams (UNCTs) to strengthen disability inclusion in CCA, UNSDCF and national development planning processes. All UN GDF's portfolio of countries indicated contribution to UNCT scorecards. UNCTs in 31 countries reported that UN GDF-supported programmes contributed to approaching requirements, 32 countries to meeting requirements, and 26 countries to exceeding requirements across the 14 UNCT-level indicators.

Beyond country programmes, UN GDF continued to shape global disability inclusion agendas and partnerships in 2025 through engagement at major international forums, including the Global Disability Summit, the Conference of States Parties to the CRPD and the Second World Summit for Social Development.

UN GDF Key Achievements – 2025



349 million

persons with disabilities were impacted



98 national

frameworks, systems, legislations, policies, or strategies strengthened to deliver more inclusive services



30,560

representatives from 37 countries trained on disability inclusion

Progress made, challenges ahead

The CRPD anniversary provides an important moment to reflect on progress and unfinished implementation. The Convention shifted the global understanding of disability from a charity or medical model to a human rights model. Many countries have adopted legal and policy frameworks, but implementation remains uneven. Systems, financing, data, accessibility, services and accountability have not yet advanced at the scale required.

Evidence from a meta-analysis of 51 national situational analyses shows real progress. Governments are establishing frameworks for coordination and accountability, integrating disability into public budgeting and engaging more systematically with OPDs. Accessibility is gaining traction in legal frameworks, and some countries are modernizing disability assessment systems. However, progress remains uneven and inclusive outcomes are not yet delivered at scale. Systemic barriers still restrict the full and equal participation of persons with disabilities.

©UNFPA Uruguay



From 2025 results to the next strategy

The 2025 results closed a five-year strategic period and pointed clearly to the next challenge. UN GDF has helped countries build foundations for CRPD implementation. The next phase must deepen impact, scale evidence-based models and ensure that disability inclusion is built into systems from the outset.

UN GDF's 2025–2030 Strategy responds to this need by moving from broad reach to deeper systemic transformation, from policy commitments to implementation, from consultation to OPD co-leadership and from standardized approaches to flexible country pathways.

Through its new strategy, by 2030, UN GDF aims to operate in 100 countries, and directly reach 400 million persons with disabilities directly through the UN GDF-supported programmes, including at least an estimated 260 million women and girls with disabilities.

UN GDF will deliver its strategy through pursuing five interconnected goals, supported by three tailored country programme models. Catalytic financing is applied across all models, embedding disability inclusion within mainstream investments, mobilizing additional funding and encouraging national ownership to ensure sustainability. The ICH will act as the institutional engine, consolidating functions and driving implementation by strengthening OPD leadership and partnerships, generating evidence and advancing inclusive financing.

Looking ahead to 2026, UN GDF will focus on operationalizing its strategy, expanding its programme portfolio, strengthening global partnerships and embedding learning, innovation and financing across its work. Through this work, UN GDF will reinforce its role as a leading global platform for disability-inclusive systems change – helping to realize the transformative vision of the CRPD in practice and at scale.

By 2030, GDF aims to operate in **100 countries**

GDF will directly reach **400 million** persons with disabilities

GDF-supported programmes will indirectly impact **1 billion** persons with disabilities



2012

2025

2030

List of abbreviations

BMZ	Federal Ministry for Economic Cooperation and Development (Germany)
CCA	Common Country Analysis
COP	Conference of the Parties to the United Nations Framework Convention on Climate Change
COSP	Conference of State Parties to the Convention on the Rights of Persons with Disabilities
CRPD	Convention on the Rights of Persons with Disabilities
CSO	Civil society organization
DAC	Disability Action Council (Cambodia)
DIB	Disability-inclusive budgeting
EMIS	Education management information system
FAO	Food and Agriculture Organization
GBV	Gender-based violence
GDI	Global Disability Innovation
UN GDF	UN Global Disability Fund
GDS	Global Disability Summit
GIZ	Agency for International Cooperation (Germany)
HMIS	Health management information system
HNO	Humanitarian Needs Overview
HRP	Humanitarian Response Plan
ICH	Inclusion Catalyst Hub
IDB	Inter-American Development Bank
IDPD	International Day of Persons with Disabilities
ILO	International Labour Organization
ITU	International Telecommunication Union
MMDAs	Metropolitan, Municipal and District Assemblies (Ghana)
MPTFO	Multi-Partner Trust Fund Office
NDPC	National Development Planning Commission (Ghana)
NDSP3	Third National Disability Strategic Plan (Cambodia)
ODA	Official development assistance
OECD DAC	Development Assistance Committee of the Organisation for Economic Co-operation and Development
OHCHR	Office of the United Nations High Commissioner for Human Rights
OPD	Organization of persons with disabilities
PDAC	Provincial Disability Action Council (Cambodia)
PUNO	Participating United Nations Organization
RCO	Resident Coordinator Office
RICH	Resilient and Inclusive Cities Hub
SDG	Sustainable Development Goal
SOF	Strategic Operational Framework
SRH	Sexual and reproductive health
UCLG	United Cities and Local Governments
UNCT	United Nations Country Team
UNDESA	United Nations Department of Economic and Social Affairs
UNDIS	United Nations Disability Inclusion Strategy
UNDP	United Nations Development Programme
UNDRR	United Nations Office for Disaster Risk Reduction
UNECE	United Nations Economic Commission for Europe
UNESCO	United Nations Educational, Scientific and Cultural Organization
UNFCCC	United Nations Framework Convention on Climate Change
UNFPA	United Nations Population Fund
UNGA	United Nations General Assembly
UN-Habitat	United Nations Human Settlements Programme
UNHCR	United Nations High Commissioner for Refugees
UNICEF	United Nations Children's Fund
UNSDCF	United Nations Sustainable Development Cooperation Framework
UNU	United Nations University
UN WOMEN	United Nations Entity for Gender Equality and the Empowerment of Women
VNR	Voluntary National Review
WFP	World Food Programme
WHO	World Health Organization
WSSD	World Summit for Social Development
WWDF	Women with Disabilities Forum



About the UN Global Disability Fund

UN Global Disability Fund - 2025 Annual Report



©UNICEF Mozambique

About the UN Global Disability Fund

©UNICEF
Rwanda



About the UN Global Disability Fund

Mandate and role

The UN GDF is the only dedicated UN Multi-Partner Trust Fund focused exclusively on advancing the rights of persons with disabilities through collective, system-wide action.

Its core purpose is to help translate the Convention on the Rights of Persons with Disabilities into operational reality by strengthening national institutions, public systems and coordinated UN support to ensure disability inclusion is embedded, sustained and scalable.

Established in 2012 by Member States and UN entities, UN GDF has evolved into a central mechanism for disability-inclusive joint programming in the UN system. It combines pooled financing, technical support, evidence generation, capacity-building and multi-stakeholder partnerships to help countries move from commitment to implementation.

It has also played a catalytic role in broader UN reform, including through providing support to the early development of the United Nations Disability Inclusion Strategy. Independent evaluations and UN General Assembly resolutions have consistently recognized UN GDF's strategic relevance, effectiveness and value for money.

Governance and management

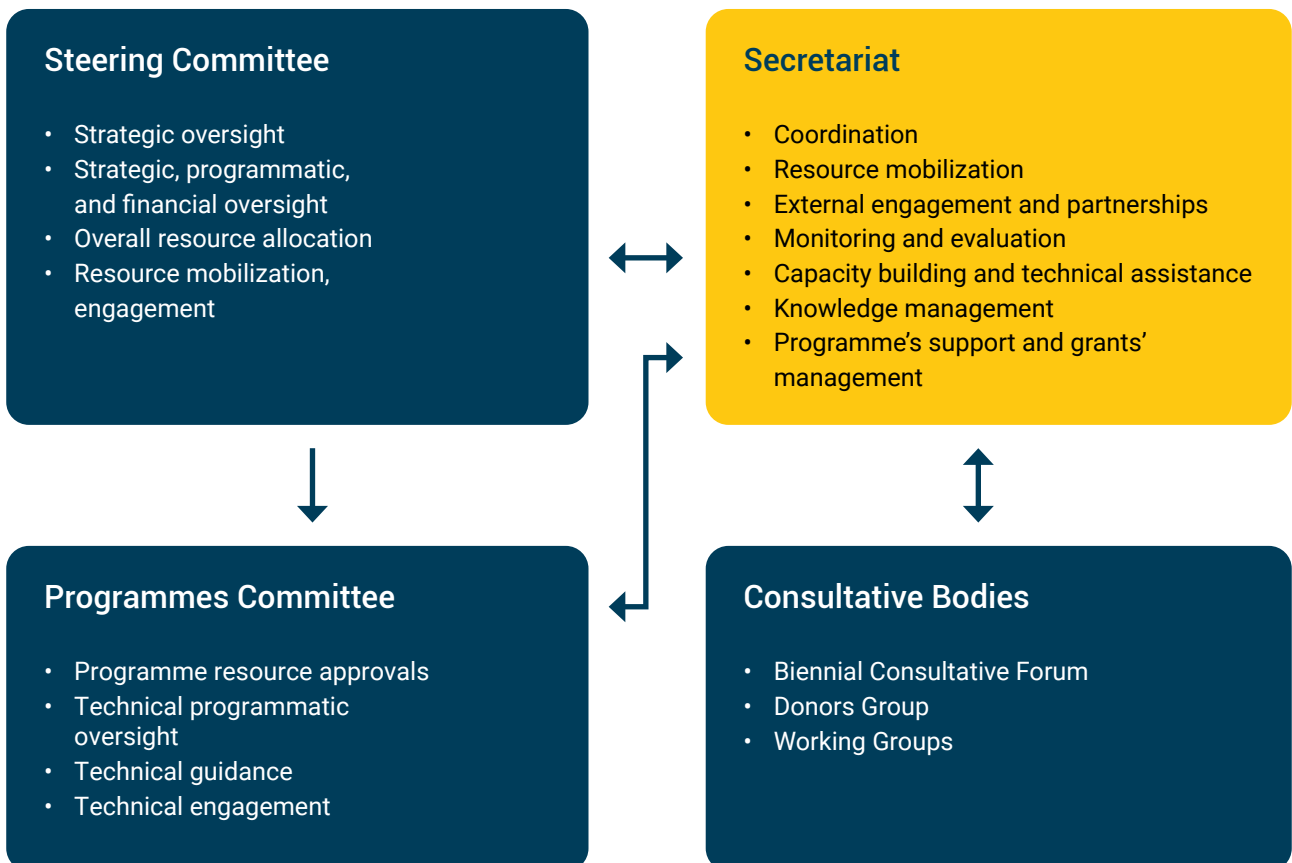
UN GDF is governed through a two-tier structure composed of a high-level Steering Committee and a working-level Programmes Committee. The Steering Committee provides overall strategic direction, strategic programmatic and financial oversight, and support for resource mobilization. The Programmes Committee, as a standing committee of the Steering Committee, is responsible for technical oversight of programme implementation and for approving programme funding decisions.

The Steering Committee is an inclusive, constituency-based body composed of representatives from Participating United Nations Organizations (PUNOs), donors and OPD/civil society constituencies. It includes four UN seats, of which one is permanently held by UN GDF as host, three donor seats and three OPD/civil society organization (CSO) seats. The Programmes Committee mirrors this multi-stakeholder approach at the technical level, including UN focal

points, donor representatives and implementation-level OPD/CSO representatives. Rotation arrangements are built into both bodies to ensure broad participation and shared ownership.

Supporting these formal bodies are several complementary mechanisms, including the UN Strategic Collaboration Working Group, the Donors Group, the Synergies Working Group and the Biennial Consultative Forum. Together, these structures help ensure strategic oversight, technical quality assurance, stakeholder engagement, learning and alignment with wider UN disability inclusion efforts. The UN GDF Secretariat, hosted within the United Nations Development Programme (UNDP), manages day-to-day coordination, external relations, resource mobilization, programme quality assurance, governance servicing and liaison with the administrative agent, the Multi-Partner Trust Fund Office (MPTFO), which provides fund design and administration services.

FIGURE 1.
UN GDF Fund Governance



Expansion of membership, including non-UN organizations

UN GDF has expanded over time into a broad-based partnership platform that brings together UN entities, donors, OPDs, civil society actors and, under the new strategy, non-UN implementing partners. This evolution strengthens UN GDF's ability to support more diverse country-led approaches and to engage new actors in disability-inclusive systems change.

Today, UN GDF includes 18 UN entities: the Food and Agriculture Organization (FAO); the International Labour Organization (ILO); the International Telecommunication Union (ITU); the Office of the United Nations High Commissioner for Human Rights (OHCHR); the United Nations Children's Fund (UNICEF); the United Nations Department of Economic and Social Affairs (UNDESA); the United Nations Development Programme (UNDP); the United Nations Economic Commission for Europe (UNECE); the United Nations Educational, Scientific and Cultural Organization (UNESCO); the United Nations Entity for Gender Equality and the Empowerment of Women (UN Women); the United Nations High Commissioner for Refugees (UNHCR); the United Nations Human

Settlements Programme (UN-Habitat); the United Nations Office for Disaster Risk Reduction (UNDRR); the United Nations Population Fund (UNFPA); the United Nations Relief and Works Agency for Palestine Refugees in the Near East (UNRWA); United Nations University (UNU); the World Food Programme (WFP); and the World Health Organization (WHO).

UN GDF is governed through a multi-stakeholder model that includes donor representatives and OPD/civil society constituencies alongside the UN system. This reflects UN GDF's emphasis on shared accountability, meaningful participation and collective action. With the new UN GDF Strategy, non-UN organizations may also serve as direct implementers of UN GDF-supported initiatives, which represents an important evolution in UN GDF's partnership and delivery model. Recent new members welcomed into UN GDF include the FAO, UNECE, UN-Habitat, UNHCR and UNRWA, as well as non-UN partners which include the Inter-American Development Bank (IDB) and the Global Disability Innovation (GDI) Hub.

UNHCR is pleased to join the UN Global Disability Fund to advance disability-inclusive humanitarian action. In situations of forced displacement, persons with disabilities face heightened risks and significant barriers to accessing protection and essential services. Through this partnership, we will work closely with governments, UN partners and organizations of persons with disabilities to ensure that humanitarian responses are inclusive by design – addressing barriers from the outset and promoting equitable access to assistance, protection and solutions. Together, we are

committed to upholding the dignity, rights and meaningful participation of persons with disabilities, including in the most challenging contexts.”

Barham Salih
UNHCR High Commissioner



UN GDF Global Partnership Ecosystem

UN partners



Civil Society



Cities Networks



Development Banks and Academia



Private Sector





2025 in review

©UNFPA Uruguay

UN Global Disability Fund - 2025 Annual Report





©UNFPA Uruguay

Where we worked in 2025

In 2025, UN GDF funded 37 national programmes and five multi-country programmes to advance implementation of the CRPD and disability-inclusive SDGs.

All UN GDF programmes must adopt a multi-stakeholder approach involving UN organizations, governments, OPDs, NGOs and broader civil society. In addition, joint programmes must meaningfully involve OPDs, while country programmes must respond to local needs.



In 2025 UN GDF Funded

37 national programmes

5 multi-country programmes

to advance implementation of the CRPD and disability inclusive SDGs in 51 countries

2025 UN GDF Programme Implementation in 51 Countries

Americas	Africa	Europe	Asia	Oceania
Argentina	Algeria	Armenia	Azerbaijan	Fiji
Barbados	Cameroon	Georgia	Cambodia	Kiribati
Colombia	Democratic Republic of the Congo	Montenegro	China	Marshall Islands
Costa Rica	Eswatini	Serbia	Jordan	Micronesia, F. S.
Ecuador	Ethiopia		Kyrgyz Republic	Nauru
Guatemala	The Gambia		Philippines	Palau
Panama	Ghana		Nepal	Samoa
Peru	Kenya		State of Palestine	Solomon Islands
	Malawi		Timor-Leste	Tonga
	Mali		Uzbekistan	Tuvalu
	Mozambique		Viet Nam	Vanuatu
	Sao Tome and Principe			
	Somalia			
	South Africa			
	United Republic of Tanzania			
	Zambia			
	Zimbabwe			



UN GDF programme results in 2025

UN Global Disability Fund - 2025 Annual Report



**UN GDF
programme
results
in 2025**



©International Labour Organization Fiji

UN GDF programme results in 2025

UN GDF’s 2025 programme results show how catalytic financing, technical support and multi-stakeholder partnerships can advance CRPD implementation in practice. Across its portfolio, UN GDF supported countries to build knowledge and tools, address preconditions for CRPD implementation and mainstream disability inclusion into national and UN planning and monitoring processes.

The results presented in this section are organized around the three outcomes of the 2020–2025 Strategic Operational Framework (SOF). The section also highlights UN GDF’s contribution to implementation of the United Nations Disability Inclusion Strategy, as well as key achievements in partnerships, outreach and global influence during 2025.

- 1 Outcome 1**
National stakeholders are equipped with the knowledge and practical tools for disability-inclusive policies and systems
- 2 Outcome 2**
Gaps in achieving the essential building blocks or preconditions to CRPD implementation are addressed
- 3 Outcome 3**
National development plans and monitoring processes include disability mainstreaming



©UNFPA
Eswatini

Outcome 1: National stakeholders are equipped with the knowledge and practical tools for disability-inclusive policies and systems

30,560
stakeholders

INDICATOR 1.1 Number of stakeholders (disaggregated by type of stakeholders¹) in UN GDF-supported countries² with increased knowledge and capacities to design/reform and deliver inclusive policies and systems for CRPD and/or SDG implementation

37
countries (73%)

INDICATOR 1.2 Number and percentage of UN GDF-supported countries that undertook multi-stakeholder capacity-building initiatives on disability-inclusive policies and systems

29 **120**
countries tools

INDICATOR 1.3 Number of UN GDF-supported countries that have developed and/or strengthened national guidelines, protocols and/or standards to inform policies and systems through a multi-stakeholder approach (disaggregated by tool²)

10
countries

INDICATOR 1.4 Number of UN GDF-supported countries report using UN GDF's situational analysis³ to inform processes and planning.

22
multi stakeholder
processes

INDICATOR 1.5 Number of multi-stakeholder processes to exchange learning on inclusive policies and systems.

Outcome 1 focuses on strengthening the knowledge, tools and capacities needed to drive disability inclusion within national systems, while also informing the global disability agenda. Knowledge generation and capacity-building are critical enablers, supporting the operationalization of the preconditions for CRPD implementation (Outcome 2) and the mainstreaming of disability inclusion (Outcome 3), by ensuring that actions are evidence-based, context-specific and scalable. In 2025, UN GDF supported governments, UN partners and OPDs to generate evidence, develop practical guidance and strengthen capacities for effective implementation.

Capacity-building

To accelerate CRPD implementation and realize the rights of all persons with disabilities, multiple stakeholders need to have the technical knowledge and capacity to drive reform. UN GDF provides specific and targeted capacity-building to meet this need. In the inception phase and throughout the implementation of all of its programmes, UN GDF prioritizes strengthening the technical capacity of governments, OPDs, UN entities, civil society and other partners, to enable them to meaningfully design and deliver lasting reforms at national and local level.

Joint Programme Induction Training

UN GDF's comprehensive training programme, 'Joint Programme Induction Training: Cross-Cutting Approaches and Preconditions for Disability-Inclusive Development', brings together representatives from governments, OPDs, UN entities, civil society and other relevant partners to develop a shared understanding of how to accelerate implementation of the CRPD and the SDGs at national levels. The programme covers the essential preconditions required for effective CRPD implementation, as well as critical cross-cutting issues such as gender equality, meaningful participation, the inclusion of underrepresented persons with disabilities and the importance of inclusive climate action, disaster risk reduction and humanitarian response and recovery.

In 2025, the induction training was conducted in 10 countries across the Pacific: **Kiribati, the Marshall Islands, the Federated States of Micronesia, Nauru, Palau, Samoa, Solomon Islands, Tonga, Tuvalu and Vanuatu**. In each country, in-person trainings were delivered in partnership with the Pacific Disability Forum.

Across the 10 countries, 262 people took part in the training, of whom 69 percent were female (180) and 31 percent were male (82). Participants included 98

representatives from governments, 62 representatives from OPDs and 69 from UN entities and other stakeholders.

Participants from all 10 countries reported very positive feedback on the training and its delivery: 91 percent praised the knowledge and quality of the facilitators; 90 percent gave positive feedback on learning facilities and environments; 89 percent valued the accessibility and inclusiveness of sessions; and 87 percent rated the course materials very highly. Importantly, participation in the training programme has a demonstrably positive impact on knowledge. Participants reporting strong knowledge of disability inclusion increased from 51 percent of all participants before the training to 85 percent after the training. Participants who had reported neutral levels of knowledge decreased from 32 percent to 15 percent, and participants giving negative responses decreased from 17 percent to under 1 percent.

In **Samoa**, the Joint Programme Induction Training brought together 21 stakeholders from diverse groups, including government officials, OPDs, UN agencies and local civil society. The five-day session was facilitated by local experts from the Pacific Disability Forum and local OPD Nuanua O Le Alofa. The training fostered meaningful dialogue and renewed commitment to advancing the rights of persons with disabilities in Samoa and generated significant media coverage, in which government representatives reported new impetus towards CRPD implementation in policymaking and OPD participants highlighted the importance of lived experience for guiding inclusive planning.

Targeted capacity-building

Alongside induction training, 27 joint programmes delivered targeted capacity-building through 420 training sessions for government officials, service providers and OPD participants. Capacity-building remained a core enabler of CRPD advancement throughout implementation, with training sessions reaching 5,611 government officials, 5,930 OPD participants and 235 UN representatives.

These sessions were co-designed and facilitated with OPDs and local subject-matter experts, including academic and service delivery institutions, ensuring the trainings' relevance and practical application. Training focused on strengthening technical capacity across key areas such as CRPD-compliant budgeting and policy formulation, inclusive health and sexual and reproductive health and rights legislation, disability-inclusive climate adaptation and inclusive education systems.

In **Eswatini**, a UN GDF-funded programme delivered targeted capacity-building to strengthen disability-inclusive policy implementation, governance and service delivery. Five national training programmes reached 430 stakeholders, including government officials, 39 parliamentarians, 140 OPD representatives and 41 traditional leaders, with training focused on CRPD-compliant budgeting, inclusive governance, gender-based violence (GBV) prevention and response, non-discrimination and advocacy. In parallel, 44 health and education staff were trained to integrate disability indicators into national health management information systems (HMIS) and education management information systems (EMIS), while 319 healthcare workers received training on neonatal disability screening procedures. As a result, 86–92 percent of participants reported increased knowledge and capacity, contributing to operationalization of the National Disability Plan of Action (2024–2028), integration of disability indicators into national data systems and roll-out of standardized disability screening across health facilities.

Knowledge generation

A critical obstacle in fully implementing the CRPD is that decision-makers, policymakers, practitioners and service providers lack knowledge and understanding about the rights and priorities of persons with disabilities. This is compounded by a shortage of practical tools, guidance and operational frameworks at the national level that could help translate CRPD commitments into inclusive policies, systems and services.

UN GDF joint programmes aim to develop and disseminate high-quality tools and guidance to address these gaps and support a wide range of stakeholders. Its knowledge generation strategy is structured around three core areas:

- i. Country-level situational analysis reports, assessing disability rights, policies and implementation challenges
- ii. Practical resources including guidelines, checklists and documented good practices to support policymakers, development stakeholders and OPDs in advancing CRPD commitments
- iii. Global tools, tested and refined across multiple country contexts to address persistent knowledge gaps in the disability sector.

Situational analysis

The UN GDF situational analysis framework is a key tool for generating robust, multi-stakeholder evidence to inform and advance CRPD implementation and inclusive development at the national level. It was designed to support national stakeholders to analyse barriers to CRPD implementation and gaps in disability-inclusive SDGs and humanitarian action processes. It enables stakeholders to work jointly to identify priorities for advancing disability-inclusive reforms and acts as a foundation for programme design, ensuring that interventions are grounded in evidence. The process acts as a multi-stakeholder planning mechanism, while also generating a key contribution to the expanding global evidence base on CRPD implementation and inclusive development.

During 2025, 10 situational analyses were completed, one of which took place in a humanitarian context (**the State of Palestine**) using guidelines tailored to conflict and crisis settings.

©Gambia





The State of Palestine: From situational analysis to inclusive humanitarian action

In 2025, GDF supported a landmark [Situational Analysis on Persons with Disabilities in the Occupied Palestinian Territory](#), led by OHCHR and UN Women on behalf of the UNCT. Development of the analysis included in-person consultations in Gaza, the State of Palestine, and extensive engagement with OPDs, humanitarian actors and civil society.

The analysis generated critical evidence on the barriers faced by persons with disabilities in humanitarian and recovery settings, including loss of assistive devices, limited access to essential services, weak disability data systems and exclusion from decision-making processes.

The findings catalysed action across the humanitarian response. They informed disability-inclusive recovery planning, strengthened disability indicators within sectoral frameworks and contributed to the Rapid Damage and Needs Assessment process. GDF also

supported 15 training sessions reaching 120 stakeholders, multi-stakeholder workshops engaging more than 500 participants and new coordination platforms to strengthen inclusive humanitarian action. Practical tools, including a Disability Inclusion Watchdog Mechanism and guidance on gender and disability inclusion, were developed, while OPDs were supported to engage directly in monitoring, advocacy and humanitarian coordination.

These efforts contributed to improved coordination across humanitarian clusters, increased inclusion of persons with disabilities in cash assistance programmes and stronger OPD participation in decision-making processes. In particular, GDF support contributed directly to strengthening and helping to rebuild the capacity of Gaza-based OPDs, who play a critical role in the humanitarian response for persons with disabilities.

In recognition of these efforts, the UN Disability Inclusion Working Group in Palestine received the UN Secretary-General's Award for Disability Inclusion in 2025.



The UN Global Disability Fund has played a critical role in bringing the UN Country Team together around a shared, coordinated approach to disability inclusion. By grounding our work in evidence and elevating the voices of persons with disabilities, we are strengthening how the UN plans, responds and delivers – ensuring that inclusion is not an add-on, but a core principle across humanitarian and recovery efforts in Palestine.

Dr Ramiz Alakbarov

Deputy Special Coordinator for the Middle East Peace Process and Resident and Humanitarian Coordinator for the Occupied Palestinian Territory

National programmes developing essential tools and resources

In 2025, 29 national programmes developed 120 diverse resources that can be used to advance mainstreaming of disability in national development plans. The knowledge products developed include 64 guidelines, 14 tools – that is, checklists, protocols and training modules – and 42 reports from studies conducted in 2025. Over 58 percent of these resources were designed specifically to support the needs of women and girls with disabilities. Participation of persons with disabilities is central to UN GDF’s strategy, and in each national programme, knowledge and tool development was carried out in partnership with OPDs, to ensure that resources reflect the priorities and lived realities of persons with disabilities.

In **Guatemala**, through the UN GDF programme, UN agencies worked with OPDs to create a comprehensive set of knowledge products and practical tools translating CRPD standards into actionable guidance for policy, legal reform and public administration. These included Guidelines for the application of reasonable accommodation and a set of guidelines to establish accessibility parameters for dialogue processes, with a view to ensuring the participation of persons with disabilities on a basis of substantive equality; disability data tools (such as harmonized administrative records and municipal disability registries); analytical products such as *La Boletina* publication which provides rights based analysis of key issues relevant to women and serves as a key tool for decision-making, visibility and advocacy.

Crucially, these products were developed through structured, participatory processes that included representatives of OPDs, who actively co-designed, reviewed, validated and applied the tools. OPDs contributed technical inputs, as well as political advocacy and communication efforts, to legislative proposals, public policy formulation and data analysis processes, including the development of evidence-based advocacy products and participation guidelines upholding the principle of “nothing about us without us”. This participatory approach strengthened the quality and legitimacy of the knowledge products, while also building OPD capacity to use them for sustained advocacy and policy influence, reinforcing their role as technical and political actors in CRPD implementation.

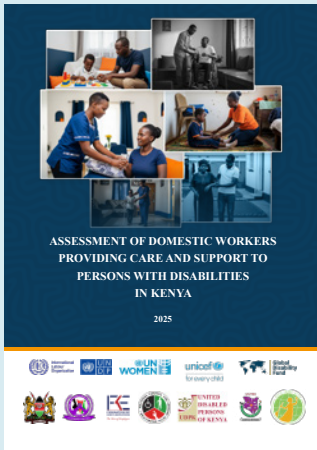
Multi-country programmes developing and testing knowledge products

UN GDF provides support for multi-country joint programmes to identify critical knowledge and capacity gaps and develop and test knowledge tools in diverse contexts, to gain evidence before they are implemented at scale. These resources aim to provide practical and evidence-based guidance to national governments and their implementing partners towards strengthening policy frameworks and ensuring the rights of all persons with disabilities. In 2025, UN GDF implemented five multi-country initiatives on knowledge building to support CRPD implementation, progress towards achieving the SDGs for persons with disabilities and inclusive humanitarian and climate action responses.



©UNICEF
State of Palestine

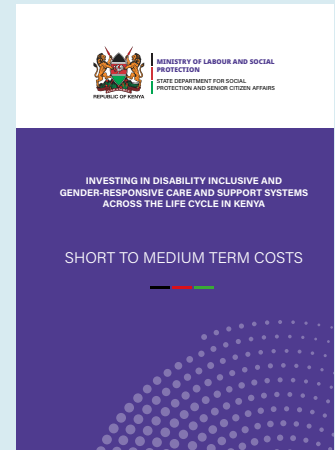
Multi-country programme knowledge products and key situational analyses published in 2025



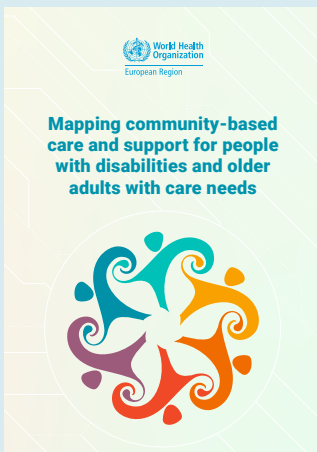
[Assessment of Domestic Workers Providing Care and Support to Persons with Disabilities in Kenya](#)



[Disability Care and Support Systems: Country Assessment Tool](#)



[Investing in Disability Inclusive and Gender-Responsive Care and Support Systems Across the Lifecycle in Kenya: Short to Medium Term Costs](#)



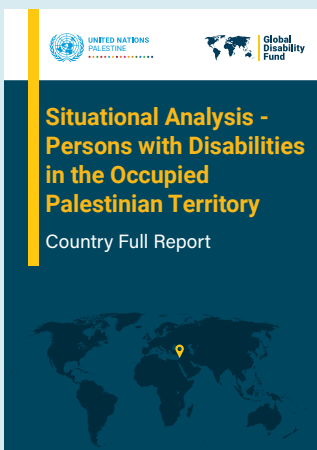
[Mapping community-based care and support for people with disabilities and older adults with care needs](#)



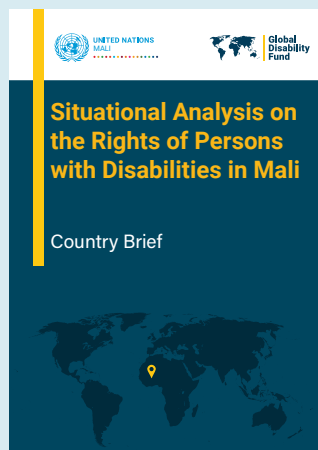
[Mapping community-based care and support for people with disabilities and older adults with care needs: Implementation guide](#)



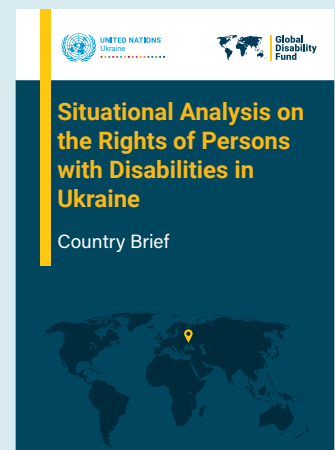
[Standard Operating Procedure \(SOP\) for the Provision of Inclusive Services in the Area of Sexual and Reproductive Health and Gender-Based Violence \(in Portuguese\)](#)



[Situational Analysis - Persons with Disabilities in the Occupied Palestinian Territory](#)



[Situational Analysis on the Rights of Persons with Disabilities in Mali](#)



[Situational Analysis on the Rights of Persons with Disabilities in Ukraine](#)

Climate change, disability inclusion and intersectionality programme

This multi-country programme laid the foundation for some of UN GDF's pioneering work on disability inclusion climate action. The programme, implemented in **Jordan, Somalia** and **South Africa**, addresses the exclusion of persons with disabilities in climate policy and action. It seeks to embed disability rights in climate strategies through advocacy, tools and capacity-building. The programme has developed the following key knowledge products:

- i. Online training module for OPDs on disability-inclusive climate action (completed and published in 2024)
- ii. Guidance note on how to mainstream a disability-inclusive and intersectional approach into the National Adaptation Plan process at national level (completed and published in 2024)
- iii. Guidance note on how to integrate an intersectional approach to disability-inclusive climate action.

In 2025, the programme developed a global guidance note on integrating an intersectional approach to disability-inclusive climate action. The guidance note is a comprehensive, action-oriented tool that consolidates lessons from Jordan, Somalia and South Africa. The development process included multiple rounds of consultation and a global validation workshop, ensuring inputs from UN agencies, OPDs and national stakeholders. The final product integrates human rights-based and intersectional approaches, including considerations related to gender, youth and marginalization, and provides practical recommendations for embedding disability inclusion across national climate policies and systems. Accompanied by country case studies, the guidance note is a key reference for policymakers and practitioners, helping to turn global commitments into inclusive national climate action.

Mapping and strengthening community-based care resources for persons with disabilities and long-term support needs

The UN GDF multi-country programme in **Armenia** and **Georgia** aims to address limited progress in deinstitutionalization agendas in lower-middle-income European countries. The programme focuses on developing community support structures encompassing health, social protection, education, labour market access and housing. This is because gaps in services, including availability, accessibility, quality and financing, are key factors contributing to institutionalization of persons with disabilities, particularly those with complex support needs. To assist policymakers, advocates and service providers, the programme has developed the following toolkit and guide:

- i. A toolkit for integrated mapping of community-based care resources for persons with disabilities and long-term support needs
- ii. An accessible implementation guide for national and local stakeholders.

In 2025, the multi-country programme made substantial progress in developing and disseminating knowledge products to support deinstitutionalization and the shift toward community-based care. The two flagship global products – the technical report, [Mapping community-based care and support for people with disabilities and older adults with care needs](#), and its accompanying [implementation guide](#) – were finalized in March 2025 and launched in a global online event in June 2025. Development of these products was highly participatory and involved a technical working group with representatives of OPDs, organizations of older persons, academic experts, policy contributors, UN GDF and WHO experts.



©UNDP Colombia

Enabling development of community support and care systems for inclusion of persons with disabilities across the life cycle

This UN GDF multi-country programme is implemented in **Colombia** and **Kenya**, and aims to address the lack of publicly funded disability support for persons with higher support needs, particularly in low- and middle-income countries. Despite the rights of persons with disabilities to live independently in the community, as stipulated under the CRPD, many still rely on unpaid care work and lack access to formal support services, which can lead to their placement in segregated settings.

The programme aims to develop the following tools:

- i. A community support and care system country assessment tool to better understand the normative framework and its implications at the country level
- ii. Two costed policy scenarios for development of gender-responsive community support and care systems.

The [Community Support and Care System Country Assessment Tool](#) was finalized and published in 2025, following an extensive process of global consultation, piloting and validation. After initial development and piloting in Kenya in 2024, the tool underwent further refinement and was validated through a multi-stakeholder process in Colombia in March 2025. It was subsequently finalized, peer reviewed, translated and disseminated as a global public good.

Significant progress was made during the reporting year on the development of costed policy scenarios for community support and care systems. In Kenya, a comprehensive, government-led costed policy scenario was completed and launched, providing a practical, budget-informed road map for the development of disability-inclusive and gender-responsive care systems.

The process involved extensive participation from government ministries, OPDs, service providers and development partners, and directly informed national policy processes, including the disability policy and implementation of the Persons with Disabilities Act 2025.

Unpaid care, disability and gender transformative approach programme

This UN GDF multi-country programme is implemented in **Colombia, Kenya, Mozambique, Panama** and the **United Republic of Tanzania**. The programme aims to address the disproportionate burden of unpaid care work, primarily carried by women and girls, and the lack of inclusive, publicly supported care and support systems for persons with disabilities. Through generating evidence, developing practical tools, and testing service delivery models, the programme supports national stakeholders to design CRPD-aligned care systems that promote gender equality.

The programme aims to develop a range of knowledge products and tools across countries, including:

- i. Analytical and data tools (e.g. care mapping, georeferencing tools, policy reviews, qualitative studies) to identify gaps in care systems and inform decision-making
- ii. Operational models, guidance and training packages to support implementation of inclusive care systems
- iii. Evidence from pilots and studies to inform policy reform, financing and service delivery models.

In 2025, the programme made substantial progress in the development of these knowledge products. Several tools have been completed and are already influencing policy and practice and all of the knowledge products are expected to be completed by the time the project ends in 2026.

In Colombia and Panama, care georeferencing and mapping platforms were developed to identify “care deserts” and analyse supply, demand and accessibility gaps in care services. Governments are already using these innovative tools to guide the expansion and relocation of services and to strengthen inclusive planning. In parallel, policy reviews and legislative mapping, integrating disability and gender perspectives, were completed or advanced, providing actionable recommendations for strengthening national and local care systems.

The programme generated new evidence through studies and assessments, many of which were completed or reached advanced stages in 2025. These include qualitative studies on unpaid caregivers (in Panama), situational analyses on gender-based violence in care contexts (in Colombia and Mozambique) and subnational assessments of



care needs and services (in the United Republic of Tanzania). These products provide critical insights into the lived experiences of women caregivers and persons with disabilities, highlighting systemic barriers and informing the design of more inclusive and gender-responsive policies and services. Although some assessments will be finalized in 2026, their findings are already being used to shape policy discussions and programme design.

Practical tools, operational models and training products were developed and scaled in 2025, representing tangible, transferable progress. In **Colombia**, the Local Management Model for Inclusive Care Systems and national guidance on inclusive early childhood education were completed and validated and are currently being scaled through government systems. In Panama, adapted case management and early childhood development tools are already being rolled out nationally with public funding. In **Mozambique**, standard operating procedures, operational manuals and communication tools for inclusive sexual and reproductive health (SRH) and GBV services were piloted and refined, strengthening service provider capacity. In **Kenya**, guidelines for the training and accreditation of caregivers were developed to support the professionalization of the care workforce. In parallel, a global training package linking CRPD, gender-transformative approaches and care system reform was developed, providing a transferable resource for capacity-building across countries.

Knowledge sharing and learning

UN GDF conducts peer-to-peer learning processes to help programme teams learn from their peers, exchange ideas and promote knowledge sharing and best practices across countries. These processes include online knowledge and learning clinics, the UN GDF online Help Desk and the provision of technical guidance.

In 2025, 69 percent of UN GDF joint programmes initiated preliminary action to establish working groups, South-South learning exchanges and online forums for sharing experiences and expertise on what worked to advance CRPD implementation.

In **Timor-Leste**, the UN GDF programme strengthened peer learning and multi-stakeholder knowledge exchange to advance disability-inclusive and gender-responsive planning and budgeting. In 2025, national and local learning platforms brought together government ministries, OPDs, civil society, UN agencies, community leaders and women with disabilities to share evidence, review progress and identify practical approaches for strengthening disability inclusion within institutional and local development processes. A municipal conference in Bobonaro engaged 78 participants in peer learning and advocacy on inclusion of rural women with disabilities in climate resilience and GBV prevention and protection reforms, generating recommendations to improve disability-inclusive governance, planning and community development.



Cambodia: Building capacity, knowledge tools and learning to drive CRPD implementation at scale

The GDF-funded Accelerating Disability Rights in Cambodia programme (2022–2025) demonstrated how capacity-building, practical knowledge tools and peer-to-peer learning can drive systemic change and accelerate CRPD implementation.

The programme reached more than 4,500 stakeholders, 42 percent of whom were women, through structured training, technical support and multi-stakeholder learning processes involving government institutions, OPDs, women-led organizations and civil society. Overall, 87 percent of participants reported increased knowledge and skills to design and implement disability-inclusive policies, systems and services.

Training was supported by practical tools and knowledge systems, including localized CRPD manuals, access-to-justice modules and a digital monitoring system for the National Disability Strategic Plan, enabling government institutions to apply learning directly within planning, monitoring and reporting processes. These investments contributed to major national achievements, including development of a CRPD-aligned disability law, launch of the National

Disability Strategic Plan 2024–2028 and submission of Cambodia’s initial CRPD State Report in 2026.

Peer-to-peer learning and replication of successful local models helped translate knowledge into scaled implementation. The programme strengthened six Provincial Disability Action Councils (PDACs) and supported establishment of 18 District Disability Action Councils, equipping local authorities with practical guidance, coordination mechanisms and disability-inclusive planning tools. Good practices, including the Kampong Cham PDAC model, were documented and shared across provinces, supporting replication, stronger government ownership and increased budget allocations for disability inclusion.

As a result, access to inclusive services increased from 4,995 persons with disabilities in 2021 to 46,487 in 2025. The programme also placed strong emphasis on gender equality and OPD leadership, supporting at least 15 OPDs, including five Women with Disabilities Forum organizations, through training, advocacy toolkits and participation in policy dialogue platforms. This strengthened the participation of women with disabilities and OPDs in local governance and decision-making structures, including Commune Committees for Women and Children.



Thanks to support from the Global Disability Fund, we have implemented a range of projects in Cambodia that have played a key role in promoting disability inclusion and ensuring that persons with disabilities can access essential services, including disability ID cards. The GDF support has made a meaningful difference in the lives of persons with disabilities in Cambodia.”

Mr Mean Vibolratanak

Projects Coordinator at the Cambodian Disabled People’s Organisation (CDPO).



Outcome 2: Gaps in achieving the essential building blocks or preconditions to CRPD implementation are addressed

36

country level programmes

INDICATOR 2.1 This is a subset of GDF programmes in the implementation phase only and does not include programmes under inception phase that accelerated CRPD implementation by improving preconditions for disability inclusion.

28

country level programmes

INDICATOR 2.2 This is calculated based on GDF programmes in the implementation phase only and does not include programmes under inception phase. that accelerated CRPD implementation by improving preconditions for disability inclusion focused on women with disabilities.

22

country level programmes

INDICATOR 2.3 This is calculated based on GDF programmes in the implementation phase only and does not include programmes under inception phase. that accelerated CRPD implementation by improving preconditions for disability inclusion focused on underrepresented groups⁴.

98

regulatory frameworks and systems

INDICATOR 2.4 Number of inclusive national regulatory frameworks and inclusive systems changes (disaggregated by type of regulatory framework and system change⁵).

22

countries

INDICATOR 2.5 Number of UN GDF-supported countries with enhanced or newly established mechanisms supporting formal and informal participation of OPDs to support CRPD implementation.

1,323

stakeholders

INDICATOR 2.6 Number of stakeholders that participated in the design/reform and implementation of inclusive policies and systems to advance preconditions for disability inclusion (disaggregation by stakeholder Government/UN/OPDs/other).

All UN GDF programmes are designed to advance a set of essential preconditions that are needed to accelerate CRPD implementation. These preconditions form the foundation for realizing the rights of persons with disabilities at the national level, which means ensuring they are all consistently integrated across policies, laws and programmes is critical to achieving systemic change.

The preconditions include equality and non-discrimination; inclusive service delivery; accessibility; CRPD-compliant budgeting and financial management; and accountability and governance. Together, they underpin the protection of rights in laws and policies, enable access to services across sectors and strengthen the availability of quality data and monitoring systems to track progress.

Achieving these preconditions requires coordinated, cross-sectoral action, as well as the systematic, meaningful participation of persons with disabilities and their representative organizations, along with broader civil society.

This section highlights programmes that have implemented targeted activities aligned with each precondition and presents examples of interventions that have advanced policy and systems-level change by establishing the foundations for disability inclusion.

In 2025, 97 percent of UN GDF programmes focused on equality and non-discrimination, 89 percent on inclusive service delivery, 22 percent on accessibility, 44 percent on CRPD-compliant budgeting and financial management and 100 percent on accountability and governance.

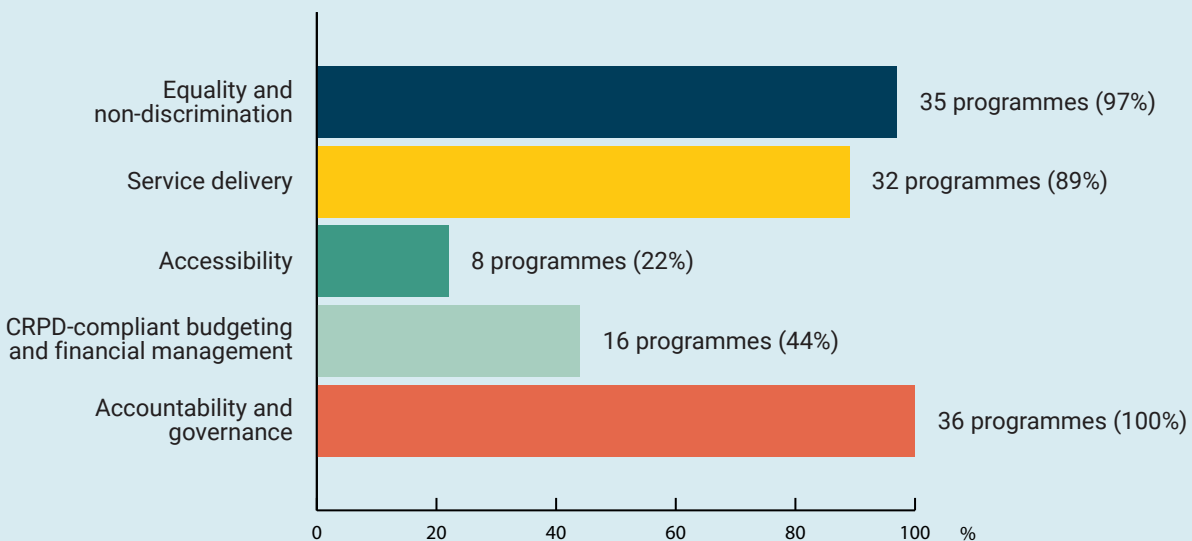
Equality and non-discrimination

Under Article 5 of the CRPD, States must recognize persons with disabilities as full rights holders and prohibit all forms of disability-based discrimination. Yet in practice, many legal and policy frameworks remain grounded in outdated charity or medical models and fail to address structural inequalities and entrenched attitudinal barriers, including stigma and discriminatory practices that limit the full and equal participation of persons with disabilities.

To ensure lasting change, 35 UN GDF programmes in 32 countries in 2025 focused on equality and non-discrimination.

In 2025, 35 programmes in 32 different countries focused on designing, revising and implementing equality and non-discrimination measures. Of these, 8 programmes are reviewing legislation; 10 are working to reform and revise legislation; 6 programmes are operationalizing and implementing legislation; 3 are working to develop new legislation; and 8 are working on a combination.

FIGURE 2.
Focus areas of GDF programmes in 2025



UN GDF's programme in **Fiji** is supporting efforts to align employment legislation with the CRPD, with a particular focus on strengthening equality and non-discrimination for persons with disabilities. The UN GDF situational analysis identified gaps in existing employment laws, showing that policies contain discriminatory provisions and do not fully guarantee equal rights to persons with disabilities. Building on these findings, the programme convened a multi-stakeholder workshop, 'Promoting and Ensuring the Labour Rights and Inclusion of Persons with Disabilities in the World of Work in Fiji'. The workshop brought together government representatives, OPDs, employers, workers' rights organizations and UN partners to strengthen knowledge about labour rights of persons with disabilities, identify gaps in the existing legal framework, and assess progress and remaining challenges in achieving access to decent work for persons with disabilities.

Through targeted capacity-building and technical support, stakeholders in Fiji are being equipped with knowledge of CRPD-aligned legislative standards, including intersectional and inclusive approaches, as well as competences on advocacy and policy reform. This process is enabling stakeholders to propose amendments that better reflect the rights of persons with disabilities, including equal access to employment opportunities and stronger protections against discrimination. The work is laying the foundation

for future legal and policy reforms that advance more equitable and inclusive employment systems in Fiji and ensure equality and non-discrimination in employment.

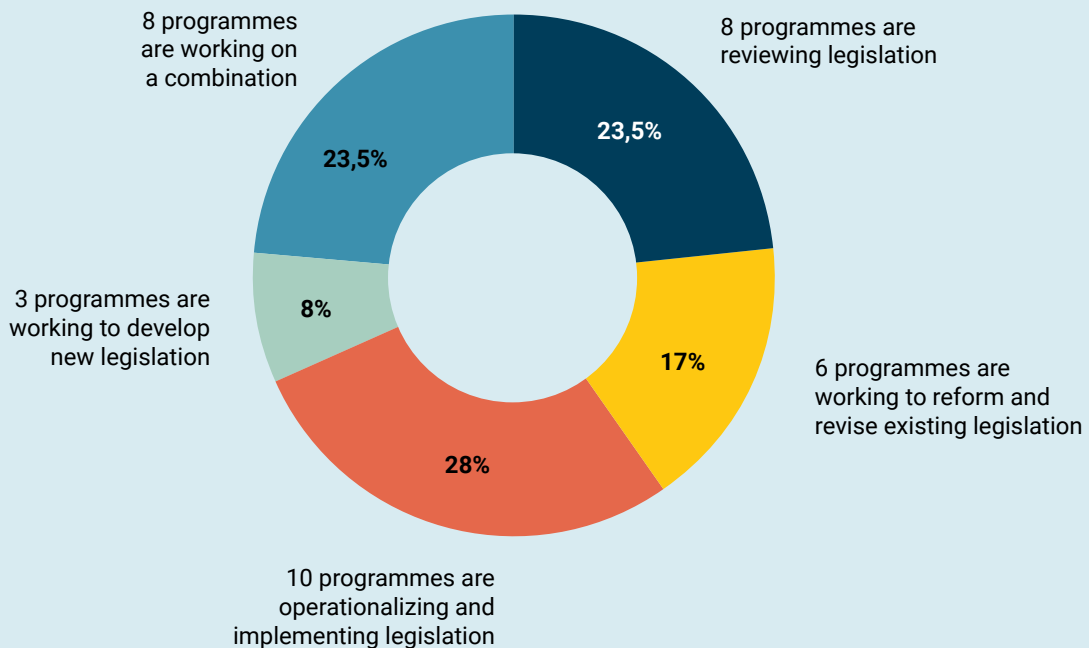
Inclusive service delivery

To ensure the full and effective participation of persons with disabilities, service delivery must mainstream disability inclusion across all services while also providing targeted, disability-specific services.

Targeted services include establishing CRPD-compliant disability assessment and referral systems that enable persons with disabilities to access quality information, support and services that empower them to live independently and participate on an equal basis. Mainstream services, such as health, education, vocational training and social protection, must be inclusive by design, as well as available, accessible, affordable, accountable and of high quality for persons with disabilities.

In 2025, 32 programmes in 30 countries focused on different aspects of disability-inclusive service delivery, including more than one area in some cases. This includes 13 programmes working on disability assessment and determination systems, 12 programmes working on disability support services, 12 on social protection systems, 12 on sexual and

FIGURE 3.
Equality and non discrimination measures



reproductive health services, 8 on health systems, 7 on inclusive education and 5 covering employment and skills development.

In **Ecuador**, the UN GDF programme plays a pivotal role in strengthening capacities to ensure the rights of persons with disabilities groups and organizations of persons with disabilities are upheld. The programme provides technical assistance to government entities to promote policy-level environments that support women and girls with disabilities in exercising their rights and accessing justice and GBV protection, particularly in rural areas. To gather evidence on specific barriers and foster autonomy, participatory workshops were conducted across multiple provinces with diverse persons with disabilities.

These activities strengthened advocacy nationwide, empowering participants to recognize themselves as rights-holders and leaders, while enhancing organizations of people with disabilities to promote their active role in shaping inclusive public policies.

The programme has strengthened inclusive service frameworks by working with the Ministry of Health to update the national manual on sexual and reproductive health and gender-based violence services, aligning it with CRPD standards and embedding disability inclusion across service delivery systems.

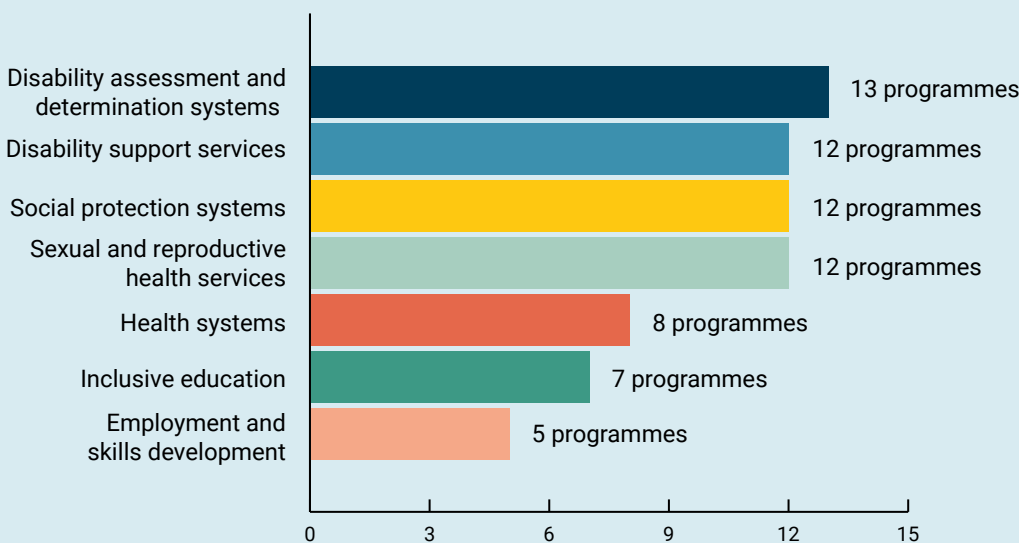
Extensive consultations with women with disabilities and their representative organizations were held to ensure the revised manual reflects their access needs and the barriers they face. The manual also underwent technical reviews, including regional reviews with health workers and Ministry of Public Health staff, before being submitted to the Ministry of Public Health for formal adoption.

Accessibility

Accessibility is a fundamental precondition needed to ensure persons with disabilities can live independently, access essential services and participate fully and equally in all aspects of life, in accordance with the CRPD. States are obligated to take appropriate measures to ensure that persons with disabilities have access, on an equal basis with others, to the physical environment, transportation, information and communications, and to all facilities, platforms, services and systems open or provided to the public.

In 2025, eight programmes in eight different countries focused on addressing accessibility, including working to improve the accessibility of early warning systems, urban disaster risk management plans, cultural heritage centres, public institutions, museums, primary, secondary and higher education facilities, accessible

FIGURE 4.
32 programmes focused on inclusive service delivery



learning materials, digital systems and online accessibility, national accessibility plans, standard operating procedures and guidance, and the provision of accessible public information.

In **China**, a UN GDF-supported programme advanced accessibility through practical tools, digital innovation and multi-stakeholder collaboration involving government institutions, universities, museums and OPDs. A major achievement was the development of China's first bilingual national Guidelines on Museum Accessibility, alongside awareness-raising materials and good practice resources to support more accessible cultural institutions and public spaces.

The programme also strengthened digital accessibility for college students with disabilities and women with disabilities by developing a customized large language model-based agent tailored to their digital literacy needs and an accessible online learning portal. More than 600 learning resources were reviewed and adapted with accessibility features such as screen reader compatibility and structured navigation. The design of these tools was informed by an accessibility needs assessment involving 390 respondents with diverse disabilities, helping ensure that digital learning systems responded directly to users' needs and experiences.

The programme strengthened information and communication accessibility through national advocacy campaigns and public awareness initiatives on sign language rights. As a result of the programme's work, accessibility was embedded across national systems and planning frameworks, contributing to broader progress on CRPD implementation, including inclusive service delivery and barrier-free environments.



CRPD-compliant budgeting and financial management

To effectively operationalize commitments under the CRPD, States must allocate adequate financial resources to progressively realizing economic, social and cultural rights. This means ensuring legislation, policies, programmes and services are properly costed and budgeted.

In 2025, 16 programmes in 16 different countries focused on ensuring CRPD-compliant budgeting and financing, including costing national disability action plans, costing and budgeting the provision of care and community-based services, developing disability-inclusive budgeting tools for use across ministries, strengthening cross-sectoral monitoring and annual budgeting processes, reviewing national budgetary systems and tracking allocations to increase financial allocations across sectors.

In **Montenegro**, UN GDF support strengthened the Government's capacity to operationalize CRPD commitments, with disability-inclusive budgeting being introduced into national public financial systems. In 2025, the programme supported development of a practical disability-inclusive budgeting tool and step-by-step manual, enabling ministries to systematically cost the rights of persons with disabilities and integrate them into budget proposals. This contributed to shifting disability inclusion from broad policy commitments to costed and actionable measures aligned with national budget cycles and programme-based budgeting reforms.

Targeted training and technical support also strengthened the capacity of the Ministry of Social Welfare, Family Care and Demography to apply CRPD-compliant budgeting in practice, including costing priority reforms under the CRPD Action Plan (2026–2030). Alongside other reforms, this supported deinstitutionalization and expansion of family- and community-based services through budgeted interventions with dedicated resources, while OPDs and oversight bodies were better equipped to engage in monitoring and accountability processes.

Through sustained efforts Montenegro recorded measurable progress in deinstitutionalization: the number of children with disabilities in institutions decreased from 47 percent in 2024 to 33 percent in 2025; foster care placements increased by 12 percent since 2020; non-kinship foster care rose by 45 percent; and the number of children with disabilities in foster care tripled. These results demonstrate how CRPD-compliant budgeting can contribute to translating policy commitments into sustained financing and tangible improvements in people's lives.



Accountability and governance

To effectively implement the CRPD, States need to establish strong governance, information and accountability mechanisms to monitor implementation. This includes developing inclusive data and evidence systems that enable accurate disability data to be collected, analysed and used to inform inclusive policies and programming. States are also required to designate one or more focal points for the CRPD and to establish an independent mechanism to promote, protect and monitor implementation. To achieve this, deliberate cross-sector coordination is needed, together with partnerships with OPDs, civil society, the private sector, academia and international organizations.

In 2025, all programmes in all countries focused on accountability and governance. All 36 programmes in implementation phase are working to ensure deliberate coordination across sectors. Of those, 11 programmes are working to establish independent monitoring mechanisms and 9 programmes are working to strengthen inclusive data collection systems.

In **Zambia**, the UN GDF programme supported the establishment of a national coordination mechanism aligned with Article 33 of the CRPD. The programme clarified institutional mandates across key line ministries and established terms of reference and technical committees to define roles, responsibilities, oversight processes, reporting functions and grievance redress pathways.

A central accountability arrangement was agreed, designating a national human rights institution, the Human Rights Commission, as lead for CRPD monitoring and reporting, with support from Zambia's ombudsman and national OPD umbrella bodies.

The programme strengthened decentralized coordination mechanisms, enabling local-level monitoring, feedback and accountability linked to national systems. These structures formally include OPDs, and targeted capacity-building on budget analysis, policy monitoring and advocacy was provided to reinforce OPDs' effective participation.

©Timor Leste





Zimbabwe: From policy reform to inclusive services

In Zimbabwe, GDF investments have catalysed systemic change across the essential building blocks for CRPD implementation, demonstrating how coordinated support can turn policy reform into tangible improvements in the lives of persons with disabilities. Over four years, the programme strengthened national systems across policy, financing, accountability and service delivery, enabling disability inclusion to be embedded within government structures and operationalized at scale.

At the policy and systems level, the programme supported the development and adoption of the National Disability Policy and its costed Action Plan (2024–2028) – a critical milestone that translated commitments into budgeted, actionable priorities across sectors. This was complemented by the development of CRPD-compliant budgeting guidelines and templates, which are now approved for use across line ministries, helping to integrate disability inclusion throughout the public finance management cycle.

In parallel, the programme strengthened accountability systems by introducing CRPD-compliant auditing guidelines and indicators, now embedded within the Office of the Auditor General’s framework. As well as strengthened partnerships between the Ministry of Public Service, Labour and Social Welfare, the Ministry of Finance, Economic Development and Investment Promotion and OPDs, these reforms have created a more coherent, transparent and financially grounded system for advancing disability inclusion across government.

Building on these foundations, the programme focused on operationalizing policy commitments through inclusive service delivery models, particularly in addressing the intersection of disability and GBV. Following service gap assessments, the programme trained multi-sectoral service providers – including health, police, legal and social services – on disability inclusion and piloted integrated one-stop centres and mobile outreach services. These models reduced key financial, physical and informational barriers and brought services closer to underserved communities. In 2025 alone, over 552 women and girls with disabilities accessed GBV services through these pilots, marking a significant increase from previously low levels of access.



Zimbabwe’s experience demonstrates that when strong national leadership is matched with catalytic support from the UN Global Disability Fund, meaningful, system-wide progress is possible. As we move into the implementation of our costed National Disability Policy, sustained and scaled financing will be critical to ensure that disability inclusion is fully embedded across all sectors and reaches every community.”

Hon. E. Moyo
Minister of Public Service, Labour and Social Welfare, Zimbabwe



Outcome 3: National development plans and monitoring processes include disability mainstreaming

25
countries

INDICATOR 3.1 Number of UN GDF-supported countries with inclusive planning, implementation and monitoring of UN development and humanitarian activities

31
countries

INDICATOR 3.2 Number of countries that developed inclusive national development planning and monitoring to advance the SDGs

39
countries

INDICATOR 3.5 Number of UN GDF-supported countries with formal participation of persons with disabilities through their representative organizations in national development plans and/or monitoring processes for inclusive SDGs.

Mainstreaming disability inclusion within national and international development frameworks remains a central pathway through which UN GDF drives systemic change. Across UN GDF's portfolio, UN GDF-supported programmes work to ensure that

disability is not addressed in isolation, but is integrated into core planning, implementation and accountability mechanisms that shape development and humanitarian action.

Strengthening disability inclusion in UN activities at country level

In 2025, UN GDF programmes continued to engage with key national and UN-led processes, including Common Country Analyses, United Nations Sustainable Development Cooperation Frameworks, Humanitarian Response Plans (HRPs), Humanitarian Needs Overviews (HNOs) and national development and adaptation plans. Through these entry points, programmes contribute to embedding disability inclusion within the broader architecture of SDG implementation at country level.

In 2025, nine country situational analyses and one regional situational analysis across ten countries in the Pacific were completed. These situational analyses assessed the extent to which disability inclusion is reflected in national level UN frameworks, identifying gaps and opportunities for more inclusive planning and monitoring.⁶ At the same time, programmes in implementation phases advanced targeted actions to strengthen the extent to which disability inclusion is operationalized within these systems. These actions ranged from influencing planning processes to improving monitoring mechanisms and data use.

UN GDF recognizes the critical role of UNCTs in supporting governments to advance their commitments under the CRPD. In 2025, 59 percent of joint programmes actively contributed to CCA and UNSDCF processes, including development, review and monitoring cycles. This work helps to ensure that disability inclusion is reflected not only in policy commitments, but also in implementation and results tracking.

The **Mozambique** programme played a key role in strengthening the capacity of the UNCT on disability inclusion, primarily through coordinated inter-agency engagement and technical support. The programme actively supported a UNCT Technical Working Group on Disability, which brought together UN agencies to build a shared understanding of disability inclusion, contribute to the UNCT Disability Scorecard and align approaches across programming. In parallel, the programme strengthened national and UN stakeholder capacity through the situational analysis on disability rights, training and multi-stakeholder engagement processes, which equipped UN actors with evidence, tools and practical entry points to mainstream disability inclusion across sectors.

This strengthened capacity translated directly into more systematic inclusion of disability in key UN planning frameworks. In an important shift from previous cycles, the CCA included a dedicated section on persons with disabilities, which drew on evidence from the UN GDF situational analysis. This work informed the ongoing development of the UNSDCF.

The programme also ensured meaningful participation of persons with disabilities and OPDs in CCA consultations, so that the CCA was informed by lived experiences and structural barriers. Through these efforts, the programme ensured that disability inclusion was not treated as an add-on, but institutionalized within UN planning, analysis and future programming frameworks in Mozambique.

” The UN Global Disability Fund has financed UNCTs through a specific channel to support implementation of the UNDIS ... UN Global Disability Fund funding has been a catalyst in a number of ways, including supporting the capacity and development of OPDs, supporting the UNCT to mainstream disability inclusion in UNSDCFs, and the development of technical guidance for the United Nations and partners on disability inclusion in specific contexts.”

Extract from United Nations Sustainable Development Group System-Wide Evaluation Office, [Evaluation of the United Nations Disability Strategy](#), 22 September 2025

Supporting countries to institutionalize disability inclusion across national systems

UN GDF joint programmes help countries to integrate disability inclusion into assessment, planning, budgeting, implementation and monitoring processes. This integrated approach strengthens the alignment between national development priorities and the SDGs, while reinforcing accountability for inclusive outcomes.

In 2025, 74 percent of UN GDF joint programmes have focused on enhancing the implementation of disability-inclusive SDGs through national-level assessments, planning, budgeting, programming and monitoring mechanisms. These include national development plans, national adaptation plans and other key frameworks.

In **Ghana**, the programme has demonstrated how strengthening data systems and institutional capacity can drive more inclusive planning and SDG reporting. Key achievements have been the development of a National Disability Database and the operationalization

of the National Disability Data Framework, improving the collection, harmonization and use of disability-disaggregated data across sectors. Capacity-building efforts supported government stakeholders to apply standardized tools in data collection processes, such as the Washington Group Questions, a standard set of universal questions on disability developed by the Washington Group on Disability Statistics.

The National Disability Database and the National Disability Data Framework are now interoperable with national platforms such as the Ghana Statistical Service's data hub, StatsBank, enabling real-time use of data for planning and monitoring. As a result, national institutions are better equipped to generate and apply disability data in decision-making, including in Ghana's Voluntary National Review (VNR), where disability-related SDG indicators are now more systematically reflected.

©UNDP Ghana





©UNICEF Uzbekistan

To complement these system-level improvements, the programme strengthened coordination and stakeholder engagement. In collaboration with the National Development Planning Commission (NDPC), a multi-stakeholder workshop including 65 participants, drawn from OPDs, ministries, Metropolitan, Municipal and District Assemblies (MMDAs), civil society and the UN, provided a platform to assess progress on disability inclusion within national development frameworks and SDG reporting processes.

Finally, the programme supported the integration of disability inclusion into planning and accountability

systems through targeted capacity-building, policy briefs and technical guidance. This work has strengthened the ability of government institutions to apply inclusive, evidence-based approaches in development planning and implementation. The meaningful participation of persons with disabilities and OPDs has been central to this process, ensuring that national systems increasingly reflect lived experiences and uphold rights-based approaches. Together, these efforts are helping to shift disability inclusion from a peripheral issue to a core component of national development planning and SDG accountability in Ghana.

” Ghana has made important strides in embedding disability inclusion within national development planning and monitoring systems. The strengthening of disability data frameworks and the integration of disability into SDG processes are enabling more evidence-based, accountable and inclusive decision-making. This marks a critical shift from commitment to implementation, ensuring that persons with disabilities are increasingly visible in national policies, budgets and development outcomes.”

Dr. Audrey Smock Amoah
 Director-General, National Development Planning Commission, Ghana.

© NDPC



Supporting OPDs to systematically engage in national development coordination mechanisms and accountability frameworks

Multi-stakeholder planning processes at the country level are the most effective entry point for ensuring national development plans are disability-inclusive. Over 90 percent of GDF programmes have identified opportunities for persons with disabilities and their representative organizations to systematically engage in these processes, so that disability is mainstreamed into SDG programmes, CCAs, UNSCDFs and other national development frameworks and policies.

The programme in **Kenya** advanced disability inclusion in humanitarian and emergency preparedness planning by strengthening OPDs' participation and influence in county-level planning, budgeting and accountability processes. Through regional budget hubs, OPDs engaged in budget analysis, submitted memoranda and participated in public consultations with county assemblies to advocate for disability-inclusive priorities in budgets for 2025/26, including those linked to social protection, humanitarian preparedness and response. This made disability more visible within preparedness planning and strengthened OPDs' role

in monitoring and accountability. The programme also supported the development of disability-inclusive humanitarian guidelines, data systems and coordination mechanisms, supporting the institutionalization of disability inclusion across national and decentralized development systems and contributing to more inclusive and responsive humanitarian systems.

In **Serbia**, the programme focused on enabling OPDs, including those representing marginalized and underrepresented groups, to engage in national and local coordination frameworks in a systematic and meaningful way, particularly in disaster risk reduction and emergency management. The programme supported OPDs to become active contributors to national development processes beyond one-off consultations, ensuring that the perspectives and rights of persons with disabilities are embedded within planning, coordination and monitoring systems in line with the CRPD.

©UNDP Kenya





©UNICEF India

The work included a combination of capacity-building, practical tools and institutional integration mechanisms. OPDs were directly involved in the co-development of the Methodology and Guide for Disability-Inclusive Disaster Risk Reduction, working alongside government institutions and emergency management authorities. Through structured consultations, working sessions and coordination meetings, OPDs helped identify systemic barriers and shape inclusive approaches to disaster preparedness and response. Targeted training was delivered to 70 persons with disabilities (of whom 54 were women and 16 men), strengthening their capacity to engage effectively in technical discussions and coordination processes.

Importantly, the programme created practical entry points for OPD participation within formal coordination structures. Through pilot implementation in the municipality of Zaječar, OPDs participated in emergency headquarters discussions, simulation exercises and evaluation processes, demonstrating their role as partners in planning and response. Follow-up consultations helped formalize OPD engagement within emergency coordination mechanisms, including their involvement in monitoring the implementation of national disaster risk reduction action plans. Special attention was given to ensuring the inclusion of marginalized groups, such as persons with intellectual disabilities, within these processes.



For the first time, we are not being consulted as an afterthought – we are part of the systems that plan and respond to crises. Through this programme, organizations of persons with disabilities in Serbia have gained the knowledge, tools and recognition to actively engage in disaster preparedness and emergency coordination. Our lived experiences are now informing how policies and responses are designed, helping ensure that no one is left behind when it matters most.”

Ms. Ivanka Jovanović

Executive Director of NOOIS (National Organization of Persons with Disabilities of Serbia)



UN GDF's contribution to the United Nations Disability Inclusion Strategy



UN GDF's contribution to the United Nations Disability Inclusion Strategy



©UNICEF Rwanda

UN GDF's contribution to UNDIS

The United Nations Disability Inclusion Strategy provides the UN system-wide accountability framework for advancing disability inclusion across UN entities and UN Country Teams. The framework promotes a comprehensive approach to disability inclusion through strengthened leadership, inclusive programming, accessibility, coordination, organizational culture and accountability mechanisms.

In 2025, UN GDF continued to play a catalytic role in supporting UNCTs to strengthen disability inclusion and advance implementation of the UNDIS framework across development and humanitarian settings. All 33 UN GDF-supported programme countries reported against at least one UNCT-level indicator through the UNCT disability scorecards.

Overall, UN GDF-supported programmes contributed to UNCTs in 31 countries approaching requirements, 32 countries meeting requirements, and 26 countries exceeding requirements across the 14 UNCT-level indicators. Leadership was the most consistently reported indicator across programme countries, while

the indicators most frequently meeting or exceeding requirements related to leadership and coordination, consultation with OPDs, joint programming, disability-inclusive planning, disability data, monitoring and evaluation, and capacity development of UN staff.

The UN GDF annual reports from the 33 countries provide concrete examples of how these results were achieved. Notably, the **Kyrgyz Republic** emerged as one of the strongest-performing UN GDF-supported countries in the 2025 UNCT disability scorecards, with the UNCT exceeding requirements across nine indicators.

The programme contributed significantly to strengthening disability-inclusive governance, accessibility, data systems, employment, climate adaptation and institutional capacity through close collaboration between UN agencies, government institutions and OPDs, demonstrating how UN GDF-supported programmes can help drive system-wide disability inclusion across the UNCT and national development systems.

The table below summarizes the UN GDF joint programme contributions towards the most frequently reported UNCT accountability scorecard indicators.⁷

UNCT Accountability Scorecard Indicator and UN GDF role	Contributions to achieve the indicator
<p>Indicator 1 Leadership, strategic planning and management</p> <p>UN GDF joint programmes enable UNCT leadership, especially the RCOs in the country to champion leadership in disability inclusion.</p>	<p>UN GDF joint programmes strengthen UNCT leadership on disability inclusion, particularly through the Resident Coordinator Offices (RCOs). At the national level, RCOs play a pivotal role in driving disability inclusion across UN programming, ensuring it is integrated into workplans and maintained as a standing agenda item in UNCT meetings. Joint programmes also serve as key platforms for promoting disability-inclusive national development with government and other partners.</p> <p>In 2025, UNCTs in 33 UN GDF programme countries reported contributions to this indicator.</p>
<p>Indicator 5 Consultations with persons with disabilities</p> <p>Meaningful participation of OPDs, including underrepresented groups of persons with disabilities and women and girls with disabilities is core to the UN GDF's strategic framework.</p>	<p>In 2025, all UN GDF-supported national and multi-country programmes engaged OPDs through formal and informal collaborations, in which OPDs acted as collaborators, advisors and implementers. These partnerships enabled UNCTs in 30 countries implementing UN GDF programmes to report against this indicator.</p>
<p>Indicator 8 Joint programmes</p> <p>UN GDF provides funding and support for country-level joint programmes to advance disability inclusion, thus increasing the number of UNCTs receiving funding for more joint programmes integrating disability inclusion.</p>	<p>In 2025, UN GDF supported 31 joint programmes to promote the implementation of the CRPD and disability-inclusive SDGs. Disability inclusion scorecards during this period showed that in 29 countries, UN GDF-funded programmes enabled UNCTs to either approach, meet or exceed the requirements under this indicator.</p>
<p>Indicator 9 Data</p> <p>UN GDF joint programmes provide the opportunity to strengthen data on persons with disabilities by enabling UNCTs to work with national stakeholders to develop a situational analysis, build the capacity of national statistics offices and report on disaggregated data.</p>	<p>Strengthening disability data systems is a key focus across UN GDF programmes, achieved by funding evidence-based programme design such as undertaking a multi-stakeholder situational analysis and supporting countries to identify policy and system reforms that enhance the collection and use of disaggregated data for informed planning and decision-making.</p> <p>In 2025, 29 UN GDF-funded programmes reported contributions toward helping UNCTs meet this indicator.</p>
<p>Indicator 13 Capacity-building for UN staff</p> <p>UN entity offices at country level are active participants in capacity-building activities as a central component of UN GDF programmes, often alongside governments and civil society actors in the programme design and implementation phases on a range of topics, including a human-rights based approach to disability inclusion, the CRPD, disability elements of the SDGs, OPD engagement and programme focus areas.</p>	<p>In 2025, UN GDF joint programmes in ten countries implemented the standardized disability inclusion training package during their inception phases. This ensured that all implementing partners, including 69 UN staff members, had access to foundational knowledge on effective CRPD implementation and disability-inclusive SDG integration.</p> <p>Additionally, 27 joint programmes conducted tailored capacity-building activities during the implementation phase, developed in consultation with OPDs and subject matter experts. These trainings included 235 UN staff in country programmes.</p>

Partnerships, outreach and global influence

UN Global Disability Fund - 2025 Annual Report



Partnerships, outreach and global influence



Partnerships

In 2025, UN GDF used strategic communications, high-level policy influencing and partnerships to strengthen its role as a convener, knowledge broker and catalyst for disability-inclusive systems change. Outreach focused on three priorities: influencing global policy, supporting OPD co-leadership, building multi-stakeholder financing. Meanwhile, UN GDF continued to strengthen global partnerships to achieve real change.

Influencing global policy through evidence and learning

UN GDF's outreach aims to support governments and partners to translate political commitments into implementation-ready action, as well as to provide the evidence needed to drive real change.

©UN GDF



At a [high-level roundtable](#) convened by UN GDF on the sidelines of the GDS, 42 ministers and senior representatives from programme and donor countries, as well as key stakeholders from OPDs, explored how UN GDF's new strategic direction can empower governments to turn national disability pledges into real, local change.

UN GDF advocated for disability inclusion in social development agendas at the Second World Summit for Social Development (WSSD 2). To demonstrate how disability-inclusive approaches contribute to poverty reduction, equality and social cohesion, UN GDF highlighted evidence from its programmes on inclusive social protection, care and support systems and employment.

The International Day of Persons with Disabilities (IDPD) provided a key platform for knowledge dissemination. On IDPD, UN GDF launched its [e-learning platform](#), developed in collaboration with Accenture, which provides governments, UN entities and civil society with access to structured capacity-building resources. UN GDF also released a global report, [Situational Analyses and Lessons from 51 Countries on the Rights of Persons with Disabilities](#), which consolidates evidence and lessons from UN GDF-supported programmes, to inform policy dialogue and decision-making on investment.

Supporting OPD co-leadership

UN GDF is committed to the principle of “nothing about us without us”. Through its outreach in 2025, it has promoted OPD participation and inclusion to ensure meaningful participation of persons with disabilities in policymaking and decision-making.

At the 18th Conference of State Parties to the CRPD (COSP 18), for example, UN GDF actively participated in high-level events addressing OPD participation and inclusive social protection and care systems. And engagements at WSSD 2 highlighted the importance of aligning social development policies with CRPD obligations and ensuring meaningful participation of persons with disabilities.

Intersectionality and participation were also emphasized at the UN GDF-organized side event, [‘Scaling Disability-Responsive Solutions for a Resilient Future’](#), at the Conference of the Parties to the United Nations Framework Convention on Climate Change (COP 30) in Belém, Brazil. At the event, UN GDF shared practical tools and guidance on integrating the rights of persons with disabilities into nationally determined contributions, national adaptation plans and climate finance mechanisms.

©UN GDF



Building multi-stakeholder financing

As the development finance space becomes constrained, it has become more important than ever before to identify new ways of working with partners to crowd in funding.

At COSP 18, the UN GDF-organized side event '[Financing for Development: Opportunities to accelerate funding for disability inclusion](#)' identified funding opportunities and proposed strategies to strengthen monitoring and accountability of disability inclusion in development cooperation.

A side event at the 80th session of the United Nations General Assembly (UNGA) demonstrated how the new UN GDF strategy converts the Sevilla Commitments agreed at COSP 18 into investable, OPD-led country pipelines, while aligning with development finance institutions, multilateral development banks and organizations such as the Green Climate Fund to crowd in private and domestic finance.

Among its activities for IDPD, UN GDF organized and participated in a global webinar on Disability-Inclusive Climate Action, highlighting practical approaches to integrating the rights of persons with disabilities into climate policy and finance.



UN GDF's digital reach in 2025

UN GDF continued to strengthen its digital impact in 2025:



Digital outreach

in 2025

focused on programme impact, partnerships, knowledge products and strategic priorities.



Website visitors increased from approximately 18,000 in 2024 to around

38,000

in 2025.



Social media reach grew from 1,519 people reached in 2024 to

55,879

in 2025.

UN-Habitat is proud to partner with the UN Global Disability Fund to advance adequate housing and inclusive, resilient urban development. At a time when cities face mounting pressures – from the global housing crisis to climate change and rapid urbanization – this collaboration helps ensure that inclusion is at the foundation of how we build and govern urban systems. Together, we are reimagining cities as spaces where persons with disabilities are not only protected but empowered as active agents of change.”

Anacláudia Rossbach
Executive Director, UN-Habitat

Strengthening partnerships and influencing global agendas

UN GDF plays a leading role in strategic global forums, networks and alliances to embed disability inclusion across the work of the wider international community.

In 2025, UN GDF worked with GIZ, the International Disability Alliance and UNICEF to establish a Joint Helpdesk to support signatories of the Amman-Berlin Declaration on Global Disability Inclusion (a significant outcome of GDS 2025) in achieving their national and local commitments. The Joint Helpdesk provides training for government officials from official development assistance (ODA) recipient countries, building their practical skills to actively implement and monitor their targets within their national ODA portfolios. The trainings delivered through this initiative are equipping partners to analyse existing ODA portfolios, understand the mechanics of the Disability Inclusion Marker created by the Development Assistance Committee of the Organisation for Economic Co-operation and Development (OECD DAC) and advocate for its use, and contribute to South-South exchange by identifying best practices and challenges to share in regional and global exchanges.

UN GDF has also been an active participant in the Global Action on Disability Network and continued to co-chair the Disability Inclusive Climate Action Working Group to help lead efforts to strengthen inclusion and OPD engagement in United Nations Framework Convention on Climate Change (UNFCCC) and COP processes and wider climate action. In 2025, UN GDF

participated as a member of the Steering Committee in the first ever Lancet Commission on Disability and Health, and joined the WHO's landmark initiative to create the Disability Health Equity Network.

These partnerships expanded UN GDF's reach and positioned UN GDF as a trusted intermediary, connecting governments, donors, UN entities, OPDs and financing institutions to drive coordinated and scalable action.

The UN GDF funded programmes have transformed disability inclusion from a fragmented agenda into a shared national commitment, sustained by data, joint responsibility and high-level institutional engagement."

Miguel Barreto

UN Resident Coordinator, Guatemala



©UN GDF



Inclusive Urban Transformation Through Strategic Partnerships

GDF's Resilient and Inclusive Cities Hub (RICH), launched in 2025 with support from Germany through the Federal Ministry for Economic Cooperation and Development (BMZ), represents a new model for advancing disability-inclusive urban development. RICH works to transform how mainstream urban systems operate by embedding accessibility, resilience and inclusion into city planning, infrastructure, governance and financing systems. Rather than creating parallel disability-specific projects, the initiative supports cities to integrate disability inclusion into existing urban investments and public systems, demonstrating how relatively small catalytic investments can influence much larger development financing streams and institutional reforms.

In 2025, RICH supported its first cohort of programmes across six cities: Addis Ababa (Ethiopia), Kisumu (Kenya), Mopti (Mali), Lima (Peru) and Baguio City (the Philippines). Across all initiatives, OPDs are positioned as co-designers and decision-makers rather than beneficiaries, ensuring that lived experience directly shapes urban policy, planning and investment decisions. The programmes address critical urban challenges including accessible infrastructure, inclusive housing, climate resilience, disaster risk reduction, urban mobility, digital accessibility and disability-inclusive city governance.

RICH programmes demonstrate how disability inclusion can be embedded into large-scale mainstream urban investments. In Lima, Peru, a RICH investment of \$1.4 million was integrated into a broader \$40 million historic city regeneration programme, contributing to the city's first disability-inclusive multi-hazard early warning system and accessible evacuation routes in the UNESCO heritage district of Rímac. The initiative is expected to directly benefit more than 184,000 residents, including over 35,000 persons with disabilities. In Mopti, Mali, RICH support is helping influence disability-inclusive planning within the €128.5 million Sahel Resilience Partnership, which operates across more than 200 municipalities in five countries.

Alongside city-level programmes, RICH is also investing in innovation through pilot grants that test scalable approaches to disability-inclusive urban transformation. These include crowdsourced climate adaptation tools in Cambodia, accessible housing innovation in Egypt, artificial intelligence-powered urban vulnerability mapping in India, georeferenced accessibility audits in Nigeria and digital disability registries in Sierra Leone.

RICH aims to establish a global network of cities demonstrating scalable models for disability-inclusive urban development across diverse contexts. Through comparative learning across participating cities, the initiative will generate evidence on what works in different urban settings and develop practical guidance, technical tools and replicable models that can be integrated into municipal policies, infrastructure standards, climate adaptation strategies and urban financing frameworks. RICH also seeks to strengthen the technical capacity of local governments and OPDs, while expanding a global community of practice connecting cities, development partners, technical institutions and financing actors working on inclusive urban resilience.

Looking ahead to the 2028 Global Disability Summit in Doha, GDF expects RICH to demonstrate how disability inclusion can be embedded as a core component of sustainable and climate-resilient urban development rather than treated as a stand-alone social intervention.

RICH impact at a glance



11 programmes and innovation pilots

launched across 4 regions



\$8 million+ invested

in disability-inclusive urban development



1 million+ people

expected to benefit directly and indirectly



From commitment to impact: Results of the 2020–2025 strategy

UN Global Disability Fund - 2025 Annual Report





Cumulative achievements against top-line targets of the Strategic Operational Framework 2020–2025

SOF top level target	Achievement June 2020–December 2025	Percentage of target
Joint programmes in at least 50 countries over the five-year period to accelerate CRPD implementation.	57 joint programmes funded since 2020 to accelerate CRPD implementation	<p>114%⁸ Based on estimated demand</p> <p>52% Based on actual need</p>
Catalytic funding to support at least 50 countries on disability inclusive national development planning and monitoring to advance the SDGs.	57 ⁹ joint programmes funded since 2020 on disability inclusive national development planning and monitoring to advance the SDGs.	<p>114%¹⁰ Based on estimated demand</p> <p>52%¹¹ Based on actual need</p>
Five multi-country initiatives to pilot UN GDF global knowledge management tools for disability inclusion across 10 countries.	9 multi- country programmes funded since 2020	180%
Fifteen knowledge management tools and/or systems created and shared to enhance program delivery.	Multi-country programmes designed 23 global knowledge products. A total of 18 have been published	120%
One hundred multi-stakeholder trainings delivered to support UN GDF joint programmes.	901 training workshops delivered to Government, OPDs and UN representatives	901%
Two evaluations conducted during the period.	<ol style="list-style-type: none"> 1. Review of the SOF was done during the new strategy development in 2025; 2. Mid Term Evaluation of the SOF completed 	100%
<p>Adequate resource mobilization targets include:</p> <ol style="list-style-type: none"> 1. Estimated average funds at the time of the SOF development (US \$ 10 M per year). 2. Actual Funds needed due to increased demand (US \$ 74 M) following pipeline created in 2021 after 4th Funding Round. 	<ol style="list-style-type: none"> 1. The Fund secured commitments of US\$21.36 million in 2025. 2. US\$78.59 million committed to deliver SOF from 2020-2025. 	<p>213%¹² based on estimate</p> <p>78%¹³ based on actual need</p>

Lessons from the 2020–2025 strategy

Implementation of the 2020–2025 Strategy provided important insights into what is required to accelerate sustainable disability inclusion at country level.

1.

Systems change is essential for sustainable impact

The 2020–2025 strategy demonstrated that broad reach alone is not sufficient to achieve lasting disability inclusion. Sustainable progress was strongest where programmes invested in strengthening governance systems, coordination mechanisms, financing, accountability frameworks, data systems and integrated service delivery models. This reinforced the importance of moving beyond isolated interventions towards deeper systems transformation.

2.

Policy commitments must be matched by implementation and financing

While many countries strengthened disability-inclusive laws, policies and commitments during the strategy period, implementation often remained uneven due to limited institutional capacity, financing gaps and weak accountability mechanisms. This highlighted the need to support countries not only in shaping policy reforms, but also in operationalizing, financing and scaling them within national systems.

3.

OPD leadership improves relevance, ownership and sustainability

Experience across GDF-supported programmes showed that outcomes were more effective and sustainable when OPDs were meaningfully engaged as equal partners throughout programme design, implementation, monitoring and advocacy. The strategy period reinforced that meaningful participation requires OPDs to be adequately resourced, strengthened and positioned as co-leaders rather than only consulted stakeholders.

4.

Flexible and context-responsive approaches are critical

Countries participating in GDF programmes were at different stages of readiness, institutional capacity and policy development. The strategy demonstrated that standardized approaches are less effective than adaptable pathways tailored to national priorities, contexts and levels of progress. This reinforced the importance of flexible programme models that can support countries from foundational systems strengthening through to scaling successful approaches.

These lessons directly informed the evolution of the 2025–2030 Strategy, which shifts from broad reach to deeper systems impact, from policy commitments to implementation and financing, from consultation to co-leadership with OPDs and from standardized programming to more flexible and context-responsive pathways for change.



Global reach, local impact: UN GDF since establishment

Cumulative impact 2012–2025



879 MILLION
lives of persons with disabilities impacted



116 JOINT PROGRAMMES
in 100 countries



4,287
OPD MEMBERS
participated in system-level changes



147,187
REPRESENTATIVES
from government, OPDs and UN entities were trained on disability inclusion



319
SYSTEM-LEVEL CHANGES
resulting in more inclusive services and data collection systems



161
LAWS
policies, strategies and regulations adopted to advance the rights of persons with disabilities

GDF investments 2012–2025

Total:
US\$64 Million

116 Joint Programmes
100 Countries

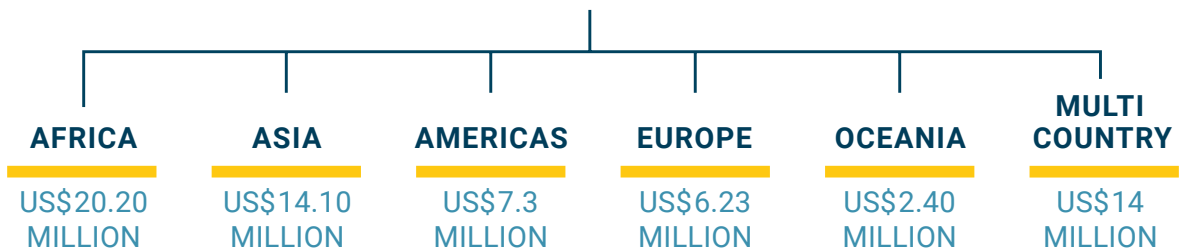
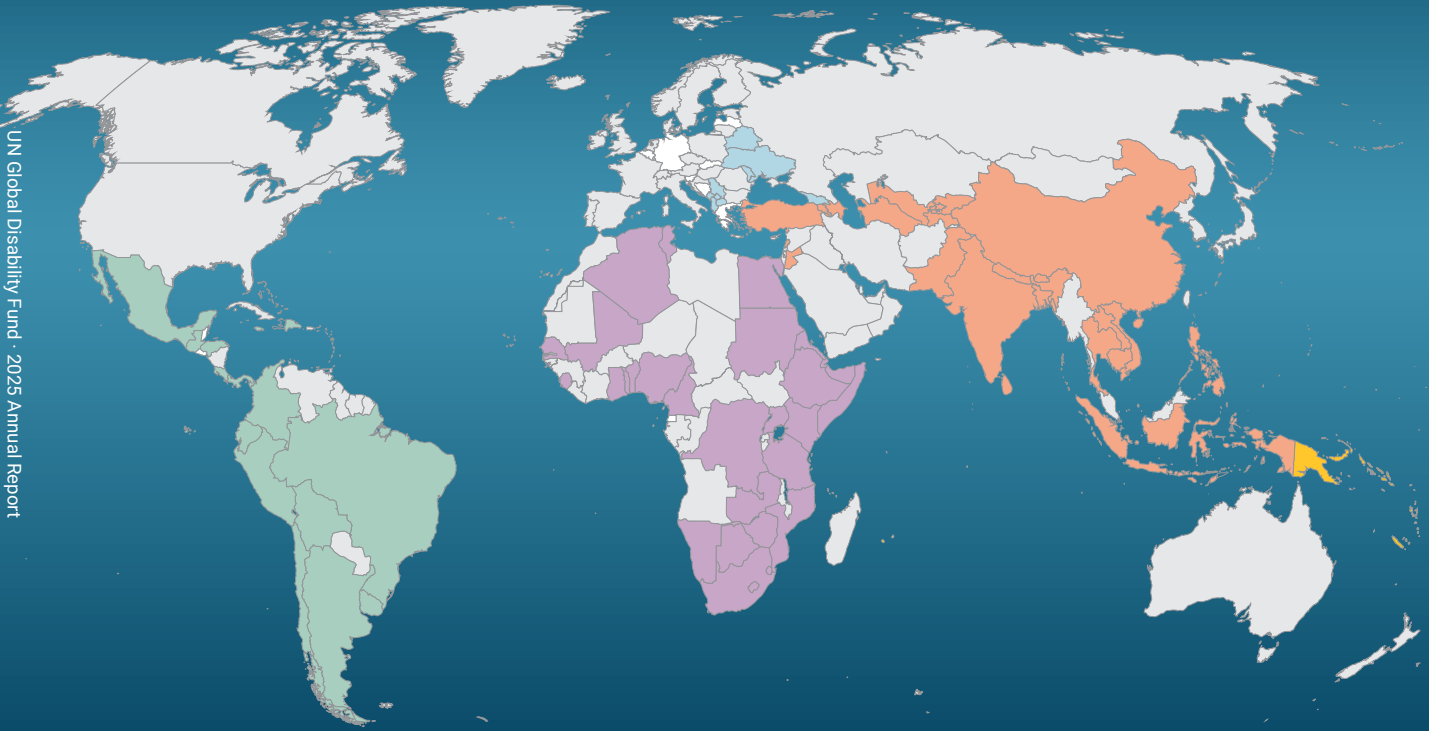


FIGURE 5.
The UN Global Disability Fund footprint:
Our reach in 100 countries¹⁴

UN Global Disability Fund - 2025 Annual Report



● National programme ■ Multi-country programme

Americas	Asia			Oceania	Europe
● ■ Argentina	● ■ Armenia	● ■ Viet Nam	■ Lesotho	● ■ Cook Islands	■ Albania
● Barbados	● Azerbaijan	● Maldives	● Mali	● ■ Fiji	● ■ Georgia
■ Brazil	● ■ Bangladesh	● ■ Nepal	■ Malawi	■ Kiribati	● ■ Kosovo
● Bolivia	● ■ Bhutan	● ■ Pakistan	■ Mauritius	■ Micronesia, F. S.	● ■ Moldova
■ Chile	● ■ Cambodia	● ■ State of Palestine	● ■ Namibia	■ Nauru	● ■ Montenegro
● ■ Colombia	● ■ China	● ■ Philippines	● ■ Nigeria	■ Palau	● ■ North Macedonia
● Costa Rica	● Democratic People's Republic of Korea	● ■ Sri Lanka	● ■ Rwanda	■ Papua New Guinea	● ■ Serbia
■ Dominican Republic	● ■ India	Africa		■ Samoa	● ■ Ukraine
● ■ Ecuador	● ■ Indonesia	● ■ Algeria	● ■ Sao Tome and Principe	● ■ Solomon Islands	
● Guatemala	● ■ Jordan	● ■ Benin	■ Senegal	■ Tonga	
■ Honduras	● ■ Kyrgyz Republic	● ■ Botswana	● ■ Sierra Leone	■ Tuvalu	
■ Jamaica	■ Laos	● ■ Cameroon	● ■ South Africa	■ Vanuatu	
● ■ Mexico	■ Lebanon	● ■ D. R. Congo	● ■ Sudan		
● ■ Panama	● ■ Tajikistan	● ■ Djibouti	■ Somalia		
● ■ Peru	● ■ Timor-Leste	■ Eritrea	● ■ Togo		
■ St Lucia	■ Thailand	● ■ Egypt	● ■ Tunisia		
● ■ Trinidad and Tobago	■ Turkey	● ■ Eswatini	● ■ Uganda		
● Uruguay	■ Turkmenistan	● ■ Ethiopia	● ■ U. R. Tanzania		
	● ■ Uzbekistan	● ■ The Gambia	● ■ Zambia		
		● ■ Ghana	● ■ Zimbabwe		
		● ■ Kenya	● ■ Morocco		
			● ■ Mozambique		

Anniversary feature: From recognition to implementation



**Anniversary
feature: From
recognition
to implemen-
tation**



©UNICEF Panama

Twenty years of CRPD

This anniversary marks a defining moment for disability inclusion. It is an opportunity to recognize how far the global community has come in affirming the rights of persons with disabilities – and to confront the implementation gap that continues to prevent those rights from being fully realized in practice. Twenty years after the adoption of the CRPD, the global community stands at an important transition point: from securing recognition of disability rights to ensuring those rights are realized in practice, through sustained implementation, accountability and systems change.

What changed? Progress in CRPD implementation

The CRPD brought about a profound shift in how disability is understood. Persons with disabilities are not recipients of charity or care, but rights-holders entitled to full and equal participation in all aspects of society. The Convention also established a new standard for meaningful participation, becoming the first UN human rights treaty negotiated with the direct and sustained engagement of persons with disabilities and their representative organizations.

Over the past two decades, this shift has driven important progress across many countries. To date, 192 State Parties have adopted disability laws, policies and institutional frameworks aligned with CRPD principles, helping to reposition disability inclusion as a cross-sector governance and human rights issue rather than a medical or welfare concern. National experiences have also contributed to a growing body of evidence on what enables progress – and what continues to hinder implementation.

UN GDF’s meta-analysis of 51 national situational analyses on CRPD implementation highlights several common trends. Governments are increasingly establishing coordination mechanisms and engaging OPDs more systematically in national processes. Accessibility is gaining greater prominence within legal and policy reforms, while some countries are beginning to modernize disability assessment systems toward more rights-based approaches. There are also early shifts toward community-based services, stronger recognition of disability within public planning and budgeting systems and increased visibility of persons with disabilities in public decision-making. Together, these developments reflect growing institutional commitment to advancing the promise of the CRPD.

Persistent gaps and implementation challenges

Despite progress, implementation remains uneven. Legal and policy commitments have not yet translated into fully functioning systems at scale.

Across the 51-country analysis, persistent gaps remain in:

- Weak coordination and accountability mechanisms
- Insufficient and unpredictable financing
- Limited availability and use of disability-disaggregated data
- Continued reliance on medical-model assessment systems
- Inaccessible infrastructure and services across key sectors
- Ongoing stigma and discrimination
- Limited meaningful participation of OPDs in decision-making.

As a result, persons with disabilities continue to face significant barriers in accessing health, education, employment and justice.

©Algeria



Unrealized Rights: Global Gaps & Progress in CRPD Implementation

Meta-analysis of 51 Country Situational Analyses by the UN Global Disability Fund

The UN Global Disability Fund (GDF) conducted a meta-analysis of 51 country situational analyses to evaluate the implementation of the Convention on the Rights of Persons with Disabilities (CRPD).

The findings identify systemic barriers and outline pathways for inclusive development across Sub-Saharan Africa, Latin America, Eastern Europe, Central Asia, and the Pacific.

Five Systemic Bottlenecks Blocking Inclusion	Five Sectors Furthest Behind in Inclusion	Emerging progress and evidence of change	GDF's Response: Accelerating Sustainable Change	The Path Forward
<p>Weak coordination: 49 countries assign CRPD responsibility to social welfare ministries that lack authority or resources. Only five of 36 national disability councils function effectively.</p>	<p>Disability support services: Weakest area globally. Institutionalization remains the default. Inadequate community-based services.</p>	<p>Legislative reform: 40 countries now possess dedicated national disability laws or comprehensive policies.</p>	<p>Evidence-based programming: Using situational analyses to design targeted interventions.</p>	<p>The path forward strengthens cross-sector coordination and centers OPD leadership to embed disability rights in systems and move beyond medical and segregated approaches.</p> <p>This evidence base helps countries identify bottlenecks and accelerate CRPD implementation ahead of its 20th anniversary.</p> <p>Success will require sustained commitment, adequate financing, genuine OPD partnership, and coordinated UN-government action.</p>
<p>Persistent stigma: 30 countries identify attitudes as key obstacles. Charity models dominate service delivery, denying rights and perpetuating exclusion.</p>	<p>Employment: Employment opportunities for persons with disabilities remain extremely limited across contexts. Quota systems are poorly enforced.</p>	<p>OPD leadership: Organizations of Persons with Disabilities (OPDs) are increasingly influential in one third of surveyed countries.</p>	<p>Catalytic financing: Leveraging resources for impact across climate, development, and humanitarian sectors.</p>	
<p>Inaccessible environments: Physical, digital, and legal barriers exist across all domains. 85% of countries report critical gaps in access to justice.</p>	<p>Inclusive education: Enrollment rates for children with disabilities vary drastically, from 1% to 46%. Segregated systems and inaccessible infrastructure persist.</p>	<p>Disaster inclusion: Countries like Fiji and Bangladesh demonstrate success in inclusive disaster planning when OPDs co-design systems.</p>	<p>OPD co-leadership: Providing OPDs with the resources and capacity to co-lead programmes and participate equally in decision-making.</p>	
<p>Non-compliant assessment: 42 countries use disability assessment systems grounded in medical models, channeling individuals into segregated services rather than inclusive opportunities. Only nine countries use rights-based, multidisciplinary frameworks.</p>	<p>Health: Discrimination and refusal of care are widespread. Informed consent is routinely denied to persons with psychosocial or intellectual disabilities.</p>	<p>Accessibility frameworks: Cross-sector strategies succeed when OPDs co-lead audits, as evidenced in Ukraine.</p>	<p>Capacity building: Delivering multi-stakeholder inclusion trainings.</p>	
<p>Data gaps: 49 countries lack reliable disability data. Only one third use Washington Group questions, and indicators are absent from SDG monitoring systems.</p>	<p>Accessibility: Enforcement of legislation and standards is weak, impacting transport, infrastructure, and ICT.</p>			
	<p>Access to justice: 85% of countries report barriers in courts, police stations, and legal processes.</p>			

The UN Global Disability Fund's role in advancing CRPD implementation

UN GDF helps countries move from CRPD commitments to implementation. By combining pooled financing, technical assistance, OPD participation and evidence-based reform, UN GDF supports systemic change across governance, services and accountability systems.

To address these systemic gaps in CRPD implementation, UN GDF is supporting governments to meet their CRPD commitments at the national level. For example, UN GDF supported the establishment and operationalization of the Gambia's CRPD Article 33 National Advisory Council, strengthening coordination, parliamentary oversight and OPD participation through a dedicated Secretariat and national budget, which enhanced national systems for disability rights monitoring and accountability.

Countries such as Armenia, Georgia and Uzbekistan are being supported to adopt rights-based assessment systems and building the capacities of institutions and service providers to shift to community-based services. For example, in Armenia, the UN GDF programme helped establish an assistive technology service model. In Georgia, the programme strengthened informed consent practices in healthcare, promoting dignity, autonomy and the right to make informed

decisions about one's care. And in Uzbekistan, the UN GDF programme supported the development of foster care services for children with disabilities to prevent institutionalization.

Countries such as the United Republic of Tanzania are strengthening disability legislation and policy, in partnership with OPDs, to align with the CRPD. OPDs, including women-led OPDs, were engaged in legislative reviews of the National Disability Policy (2004) in Mainland Tanzania, the Disability Act (2010) in Zanzibar and the National Plan of Action to End Violence Against Women and Children II (2024/25 – 2028/29) to ensure alignment with the CRPD. And governments including Zimbabwe are adopting disability-inclusive budgets to support the implementation of national disability rights policies and laws.

As countries look ahead to the next decade of CRPD implementation, accelerating progress will require sustained systems change, predictable financing and stronger institutional capacity, anchored in the leadership and participation of persons with disabilities and their representative organizations. UN GDF's role, therefore, is not only to support individual reforms, but to help countries build the partnerships, systems and financing mechanisms needed to realize disability inclusion at scale.

As we mark the 20th anniversary of the CRPD this year, it is important to recognize that UN GDF represents something historically significant. It is not simply a fund. It is a practical expression of international cooperation under Article 32 of the Convention."

Miyeon Kim

Chairperson, Independent Committee on the Rights of the Persons with Disabilities





Navigating a changing global context

UN Global Disability Fund - 2025 Annual Report



©UNDP Eswatini

**Navigating
a changing
global
context**



©UNDP Mozambique

Navigating a changing global context

As UN GDF closes its 2020–2025 strategy and moves into its next phase, the global context is changing rapidly. The Fund enters this period with strong evidence and a growing partnership base, but also with a clear understanding that disability inclusion must advance in a more complex environment shaped by UN reform, constrained development financing and rising demand for implementation support.

UN reform and the UN80 agenda

The UN80 agenda calls for a more coherent, efficient and results-oriented multilateral system. This agenda represents a fundamental rethinking of how the UN delivers, coordinates and accounts for its impact in an increasingly complex world.

For disability inclusion, this carries both risk and opportunity. Risk, because reform processes can inadvertently narrow the institutional space for cross-

cutting rights-based agendas. The opportunity is that UN GDF’s model – pooled, country-led, coordinated and results-focused – directly supports the kind of coherent UN action that reform requires. Grounded in partnership, OPD participation and evidence-based programming, UN GDF is well positioned to contribute to this evolving agenda.

The changing donor climate

Reductions in official development assistance and shifting donor priorities are increasing pressure across the development system. In this environment, investments must demonstrate clear results, strengthen national systems and contribute to sustainable change. UN GDF is well placed to respond because its model focuses on catalytic financing, country ownership, evidence generation and system-level outcomes that can drive longer-term transformation.

“ We view the UN Global Disability Fund as one of the clearest examples of a mechanism that really works [...] it has demonstrated over and over that political commitments can be translated into investment-ready programmes, measurable outcomes and meaningful impact.”

H. E. Alicia Buenrostro Massieu
Ambassador of Mexico to the United Nations



Strategic ambition and goals

By 2030, UN GDF aims to operate in 100 countries, and directly reach 400 million persons with disabilities, with an indirect impact on 1 billion people.

UN GDF’s 2025–2030 strategy is organized around five interconnected goal areas: OPDs leading the change, equitable access to essential services, physical and digital accessibility, support and protection services, and resilience to crises. To achieve these goals, country-level action will be connected to global systemic transformation through four interdependent pathways: practices, partnerships, policies and financing, and knowledge and learning.

At its core, the UN GDF Strategy 2025–2030 is about ensuring that disability inclusion is no longer treated as a marginal issue, but is embedded in policies, budgets and systems at scale. It is a commitment not only to progress, but to transformation.

How UN GDF will deliver

UN GDF will deliver the strategy through tailored country engagement models, catalytic financing and the Inclusion Catalyst Hub. Country programmes will follow three pathways: Transformative Programmes for long-term systemic change, Acceleration Programmes for scaling proven solutions and Response and Entry Programmes for immediate needs, policy windows and early-stage innovation. Catalytic funding will position disability inclusion within large-scale mainstream investment, while crowding in funding from development banks and partners and ensuring domestic integration to embed inclusion within national systems. The Inclusion Catalyst Hub (ICH) will connect country-level learning with global influence, technical support, policy, financing and OPD leadership.

The ICH, established in 2025 as the institutional engine of the strategy, is central to delivering the 2025–2030 strategy. The ICH is a unified platform that consolidates expertise, translates learning into action and influences policies, practices and financing systems. Rather than replacing national leadership, the ICH enables and influences change.

Through this integrated approach, UN GDF will help move disability inclusion from the margins to the mainstream – ensuring it is systematically embedded in policies, financing and institutions across development, humanitarian and climate action.



FIGURE 6.
What will we achieve by 2030 – Five Strategic Goals



Looking forward to 2026

UN Global Disability Fund - 2025 Annual Report



©Spain

Looking forward to 2026



©Ukraine

Looking forward to 2026

UN GDF moves into 2026 at a decisive moment – shifting from strategy design to large-scale delivery. Building on the foundations laid in 2025, the year ahead will focus on translating ambition into action: operationalizing the new Strategy, expanding country programmes, strengthening systems and evidence and positioning UN GDF as a leading global platform for disability-inclusive systems change and financing.

Operationalizing the strategy for scale

A central priority for 2026 will be to ensure that UN GDF's strategic ambition is matched by robust and efficient delivery systems. This includes strengthening core operational functions – grant-making, financial management and programme oversight – to support a growing and more diverse portfolio of partners. As UN GDF expands its engagement beyond UN entities, due diligence, risk management and accountability frameworks will be further reinforced.

At the same time, UN GDF will establish the systems required to deliver and measure impact at scale. This includes finalizing its results and measurement framework, completing a global baseline and operationalizing real-time monitoring, evaluation and learning systems. Together, these investments will enable stronger performance tracking, adaptive management and transparency – ensuring that programmes not only expand, but deliver measurable and sustained results.

Driving results through an expanded programme portfolio

In 2026, UN GDF will significantly expand and deepen its country-level engagement, supporting both the implementation of ongoing programmes and the launch of new initiatives across its strategic priority areas. Active programmes will be strengthened through technical assistance, quality assurance, regular performance reviews, safeguarding and financial oversight and cross-country learning.

At the same time, completed programmes will be systematically closed through final evaluations, risk analysis and knowledge capture – so that lessons learned inform future programming and scale-up efforts.

New programmes will be launched across key thematic areas, including inclusive cities, climate action, essential services and humanitarian and recovery contexts.

This includes the continued expansion of the Resilient and Inclusive Cities portfolio, the implementation of multi-country initiatives such as the unpaid care programme, and new programming in contexts such as the State of Palestine, Sudan and Ukraine as well as climate-focused initiatives in the Pacific. These efforts will prioritize both innovation and scalability, generating practical models and evidence to inform national systems and global policy.

Across this expanding portfolio, the focus will remain on embedding disability inclusion within national systems – strengthening policies, institutions and financing mechanisms to ensure long-term, sustainable impact.

OPDs will remain central to this approach, with expanded support for their leadership, participation and co-creation across all stages of programme design and implementation.

Powering knowledge, partnerships and financing through the Inclusion Catalyst Hub

The ICH will serve as the engine of UN GDF’s work in 2026 – integrating knowledge, innovation, partnerships and financing to accelerate systems change across the portfolio. Fully operational, the Hub will provide technical support to country programmes while strengthening quality assurance, cross-country learning and innovation.

A major focus will be on building a strong knowledge and learning ecosystem. This includes the launch of a global knowledge repository and helpdesk, the production of situational analyses and global knowledge products, and the facilitation of thematic learning clinics and South-South exchange. These efforts will ensure that lessons from implementation are systematically captured, shared and scaled across countries.

At the same time, the ICH will advance inclusive financing by piloting innovative and blended financing approaches, engaging multilateral development banks, donors and governments and strengthening global evidence on disability-inclusive financing. Through these efforts, UN GDF will support the integration of disability inclusion into mainstream financing systems and unlock new resources for scale.

©UNFPA Guatemala



Expanding global influence and partnerships

In 2026, UN GDF will further strengthen its role as a global convener and influencer, engaging with the UN system, multilateral institutions and global policy platforms to advance disability-inclusive development and financing. Key global moments and partnerships will be leveraged to promote alignment, collaboration and collective action.

A major milestone will be the UN GDF Biennial Conference, bringing together governments, OPDs, development partners and thought leaders to share progress, showcase innovation and shape future priorities. Alongside this, UN GDF will continue to strengthen its outreach and visibility, ensuring that evidence, learning and results are effectively documented and shared.

Resource mobilization will remain a critical priority. Through sustained engagement with donors, development finance institutions and the private sector, UN GDF will expand its financing pipeline and advance innovative approaches to mobilize and align resources for disability inclusion at scale.

The path ahead

By the end of 2026, UN GDF aims to have fully operationalized its Strategy as well as the Inclusion Catalyst Hub, expanded and strengthened its country programmes and embedded learning, innovation and financing across its work. Through this work, UN GDF will reinforce its role as a leading global platform for disability-inclusive systems change – driving impact at scale and advancing the realization of the CRPD worldwide.

” As we look ahead, we must turn commitments into concrete action. Germany calls for three key steps: adopt accessibility and meaningful participation of organizations of persons with disabilities as a standard in recovery finance, backed by data and targets; channel resources through the UN Global Disability Fund to scale inclusive solutions with catalytic financing and technical support; and invest in initiatives such as the Resilient and Inclusive Cities Hub to support local governments and OPDs in building climate-resilient, inclusive cities.”

H. E. Johann Saathoff

Parliamentary State Secretary, Federal Ministry for Economic Cooperation and Development (BMZ)





Annual financial report

UN Global Disability Fund - 2025 Annual Report

Definitions

Allocation/Total Approved Budget

Amount approved by the Steering Committee for a project/programme. The total approved budget represents the cumulative amount of allocations approved by the Steering Committee.

Approved Project/Programme

A project/programme including budget, etc., that is approved by the Steering Committee for funds' allocation purposes.

Contributor Commitment

Amount(s) committed by a contributor to a Fund in a signed donor agreement with the UNDP Multi-Partner Trust Fund Office (MPTF Office), in its capacity as the Administrative Agent. A commitment may be paid or pending payment.

Contributor Deposit

Cash deposit received by the MPTF Office for the Fund from a contributor in accordance with a signed donor agreement.

Delivery Rate

The percentage of funds that have been utilized, calculated by comparing expenditures reported by a Participating Organization or Non-UN Organization against the 'net funded amount'. This does not include expense commitments by Participating Organizations.

Contribution Agreement

Standard Administrative Arrangement (SAA) and/or European Commission contribution agreement between contributor/donor and MPTF Office.

Net Funded Amount

Amount transferred to a Participating Organization less any refunds transferred back to the MPTF Office by a Participating Organization.

Participating Organization

An organization that is a partner in a Fund, as represented by signing the applicable legal agreement with the MPTF Office for that particular Fund.

Project Expenditure

The sum of expenses reported by all Participating Organizations for a Fund reported to the Administrative Agent.

Project Financial Closure

A project or programme is considered financially closed when all financial obligations of an operationally completed project or programme have been settled, and no further financial charges may be incurred¹. MPTF Office will report a project financially closed once the financial report(s) has been received and any balance of funds refunded.

Project Operational Closure

A project or programme is deemed operationally closed once all activities funded for Participating Organization(s) have been concluded, and the Steering Committee has approved the final narrative report.

US Dollar Amount

The financial data in the report is recorded in US Dollars.

Transferred Funds

Funds transferred to Participating Organizations by the Administrative Agent in accordance with the Steering Committee's request.

¹ Financial closure must be completed within eighteen (18) months following operational closure, or within the timeframe established by the organization's financial regulations and rules, whichever occurs first.



Contents

Introduction	80
2025 Financial Performance	81
1. Sources and Uses of Funds	82
2. Partner Contributions	83
3. Interest Earned	84
4. Transfer Of Funds	85
5. Expenditure and Financial Delivery Rates	86
6. Cost Recovery	88
7. Accountability and Transparency	88
8. Direct Costs	89
Annex	90

Introduction

This Consolidated Annual Financial Report of the **UN Global Disability Fund** is prepared by the United Nations Development Programme (UNDP) Multi-Partner Trust Fund Office (MPTF Office) in fulfillment of its obligations as Administrative Agent, as per the Terms of Reference (TOR), the Memorandum of Understanding (MOU) or relevant legal agreement signed between the UNDP MPTF Office and the Participating Organizations and the donor agreement signed with contributors/donors.

The MPTF Office, as Administrative Agent, is responsible for concluding an MOU with Participating Organizations and donor agreements with contribu-

tors/donors. It receives, administers and manages contributions, and disburses these funds to the Participating Organizations. The Administrative Agent prepares and submits annual consolidated financial reports, as well as regular financial statements, for transmission to stakeholders.

This consolidated financial report covers the period 8 June 2011 to 31 December 2025 and provides financial data on progress made in the implementation of projects of the **UN Global Disability Fund**. It is posted on the MPTF Office GATEWAY (<https://mptf.undp.org/fund/rpd00>).

2025 Financial Performance

This chapter presents financial data and analysis of the **UN Global Disability Fund** using the pass-through funding modality as of 31 December **2025**. Financial information for this Fund is also available on the MPTF Office GATEWAY, at the following address: <https://mptf.undp.org/fund/rpd00>.

1. Sources and Uses of Funds

As of 31 December 2025, 16 contributors deposited US\$114,546,51 and US\$2,606,820 was earned in interest.

The cumulative source of funds was US\$117,152,871.

Of this amount, US\$81,585,764 has been net funded to 14 Participating Organizations, of which

US\$70,149,036 has been reported as expenditure. The Administrative Agent fee has been charged at the approved rate of 1% on deposits and amounts to US\$1,090,770. Table 1 provides an overview of the overall sources, uses, and balance of the **UN Global Disability Fund** as of 31 December 2025.

Table 1 Financial Overview, as of 31 December 2025 (in US Dollars)

	Prior Years up to 31 Dec 2024	Financial Year Jan-Dec 2025	Total
Sources of Funds			
Contributions from donors	93,182,061	21,363,990	114,546,051
Sub-total Contributions	93,182,061	21,363,990	114,546,051
Fund Interest and Investment Income Earned	1,575,551	1,008,264	2,583,815
Interest Income received from Participating Organizations	23,006	-	23,006
Total: Sources of Funds	94,780,617	22,372,254	117,152,871
Use of Funds			
Transfers to Participating Organizations	64,022,064	1,346,271	65,368,335
Transfers to Participating Organizations for Direct Cost – Fund Secretariat etc.	12,449,534	4,766,646	17,216,180
Sub-Total Transfers	76,471,597	6,112,917	82,584,515
Refunds received from Participating Organizations	(901,088)	(97,663)	(998,751)
Sub-Total Refunds	(901,088)	(97,663)	(998,751)
Administrative Agent Fees	877,130	213,640	1,090,770
Bank Charges	3,633	561	4,194
Other Expenditures	54,690	-	54,690
Total: Uses of Funds	76,505,962	6,229,455	82,735,418
Change in Fund cash balance with Administrative Agent	18,274,654	16,142,799	34,417,454
Opening Fund balance (1 January)	14,060,117	18,274,654	-
Closing Fund balance (31 December)	18,274,654	34,417,454	34,417,454
Net Funded Amount (Includes Direct Cost)	75,570,509	6,015,254	81,585,764
Participating Organizations Expenditure (Includes Direct Cost)	57,023,243	13,125,793	70,149,036
Balance of Funds with Participating Organizations	18,547,266	(7,110,538)	11,436,728

2. Partner Contributions

Table 2 provides information on cumulative contributions received from all contributors to this fund as of 31 December 2025.

The **UN Global Disability Fund** is currently being funded by **16** contributors, as listed in the table below.

The table includes financial commitments made by the contributors through signed Standard Administrative Agreements with an anticipated deposit date as per the schedule of payments by 31 December 2025 and deposits received by the same date. It does not include commitments that were made to the fund beyond 2025.

Table 2. Contributions, as of 31 December 2025 (in US Dollars)

Contributors	Total Commitments	Total Deposits
European Union	5,469,000	5,469,000
Government of Australia	21,595,758	21,595,758
Government of Canada	4,254,252	4,254,252
Government of Cyprus	5,160	5,160
Government of Finland	28,112,955	28,112,955
Government of Germany	8,500,049	8,500,049
Government of Ireland	440,720	440,720
Government of Israel	35,000	35,000
Government of Mexico	180,000	180,000
Government of Norway	10,016,324	10,016,324
Government of Spain	123,113	123,113
Government of the United Kingdom (Foreign, Commonwealth & Development Office)	6,437,947	6,437,947
Government of the United Kingdom	6,013,463	6,013,463
Government of Sweden	23,362,311	23,362,311
Grand Total	114,546,051	114,546,051

3. Interest Earned

Interest income is earned in two ways: 1) on the balance of funds held by the Administrative Agent (Fund earned interest), and 2) on the balance of funds held by the Participating Organizations (Agency earned interest) where their Financial Regulations and Rules allow return of interest to the Administrative Agent.

Interest received from Participating Organizations amounts to US\$**23,006**, bringing the cumulative interest received to US\$**2,606,820**. Details are provided in the table below.

As of 31 December **2025**, Fund earned interest amounts to US\$**2,583,815**.

Table 3. Sources of Interest and Investment Income, as of 31 December 2024 (in US Dollars)

Interest Earned	Prior Years up to 31-Dec-2024	Financial Year Jan-Dec-2025	Total
Administrative Agent			
Fund Interest and Investment Income Earned	1,575,551	1,008,264	2,583,815
Total: Fund Interest Earned	1,575,551	1,008,264	2,583,815
Participating Organization			
EOSG	15,731	-	15,731
ILO	924	-	924
UNDESA	81	-	81
UNESCO	6,270	-	6,270
Total: Agency Interest Earned	23,006	-	23,006
Grand Total	1,598,556	1,008,264	2,606,820

4. Transfer Of Funds

Allocations to Participating Organizations are approved by the Steering Committee and disbursed by the Administrative Agent. As of 31 December 2025, the Administrative Agent has transferred **US\$82,584,515** to **14** Participating Organizations (see list below).

Table 4 provides additional information on the refunds received by the MPTF Office, and the net funded amount for each of the Participating Organizations.

Table 4. Transfer, Refund, and Net Funded Amount to Participating Organization (in US Dollars)

Participating Organization	Prior Years up to 31-Dec-2024			Financial Year Jan-Dec 2025			Total		
	Transfers	Refunds	Net Funded	Transfers	Refunds	Net Funded	Transfers	Refunds	Net Funded
EOSG	4,571,043	-	4,571,043	245,855	-	245,855	4,816,898	-	4,816,898
GDI	-	-	-	200,419	-	200,419	200,419	-	200,419
IDB	-	-	-	200,000	-	200,000	200,000	-	200,000
ILO	5,085,395	(147,128)	4,938,267	68,052	(16,289)	51,763	5,153,447	(163,417)	4,990,030
OHCHR	4,795,528	(275,989)	4,519,539	163,893	(6,244)	157,649	4,959,421	(282,234)	4,677,188
PAHO/WHO	781,435	(345)	781,090	-	(17,849)	(17,849)	781,435	(18,194)	763,241
UNDESA	151,940	(66,574)	85,366	-	-	-	151,940	(66,574)	85,366
UNDP	27,350,651	(68,896)	27,281,755	4,766,646	(10,552)	4,756,094	32,117,297	(79,448)	32,037,849
UNDRR	-	-	-	200,000	-	200,000	200,000	-	200,000
UNESCO	5,131,084	(113,974)	5,017,110	68,052	(4,603)	63,449	5,199,136	(118,577)	5,080,559
UNFPA	8,446,664	(68,638)	8,378,026	-	(39,958)	(39,958)	8,446,664	(108,596)	8,338,068
UNICEF	11,813,096	(93,883)	11,719,214	200,000	(304)	199,696	12,013,096	(94,187)	11,918,910
UNWOMEN	5,375,410	(10,827)	5,364,583	-	(1,865)	(1,865)	5,375,410	(12,691)	5,362,719
WHO	2,969,350	(54,833)	2,914,517	-	-	-	2,969,350	(54,833)	2,914,517
Grand Total	76,471,597	(901,088)	75,570,509	6,112,917	(97,663)	6,015,254	82,584,515	(998,751)	81,585,764

5. Expenditure and Financial Delivery Rates

All expenditures reported are submitted as certified financial information by the Headquarters of the Participating Organizations. These were consolidated by the MPTF Office.

Joint Programme/Project expenditures are incurred and monitored by each Participating Organization, and are reported to the Administrative Agent as per the agreed upon categories for inter-agency harmonized reporting. The expenditures are reported via the MPTF Office's online expenditure reporting tool. The **2025** expenditure data has been posted on the MPTF Office GATEWAY at <https://mptf.undp.org/fund/rpd00>.

5.1 Expenditure Reported by Participating Organization

In **2025**, US\$**6,015,254** was net funded to Participating Organizations, and US\$**13,125,793** was reported in expenditure.

As shown in the table below, the cumulative net funded amount is US\$**81,585,764** and cumulative expenditures reported by the Participating Organizations amount to US\$**70,149,036**. This equates to an overall Fund expenditure delivery rate of **85.98** percent.

Table 5.1 Net Funded Amount and Reported Expenditures by Participating Organization, as of 31 December 2025 (in US Dollars)

Participating Organization	Approved Amount	Net Funded Amount	Expenditure			Delivery Rate %
			Prior Years up to 31-Dec-2024	Financial Year Jan-Dec-2025	Cumulative	
EOSG	4,816,898	4,816,898	3,821,533	887,609	4,709,142	97.76
GDI	200,419	200,419	-	-	-	-
IDB	200,000	200,000	-	13,084	13,084	6.54
ILO	5,153,447	4,990,030	4,041,490	501,410	4,542,900	91.04
OHCHR	4,959,421	4,677,188	3,140,203	818,985	3,959,188	84.65
PAHO/WHO	781,435	763,241	762,999	-	762,999	99.97
UNDESA	128,904	85,366	85,366	-	85,366	100
UNDP	32,157,297	32,037,849	20,350,571	4,843,670	25,194,241	78.64
UNDRR	200,000	200,000	-	182,017	182,017	91.01
UNESCO	5,199,136	5,080,559	3,921,805	813,174	4,734,979	93.2
UNFPA	8,446,664	8,338,068	5,649,026	1,958,206	7,607,231	91.23
UNICEF	12,013,096	11,918,910	8,651,341	1,996,198	10,647,538	89.33
UNWOMEN	5,375,410	5,362,719	3,830,942	964,897	4,795,838	89.43
WHO	2,947,949	2,914,517	2,767,969	146,544	2,914,512	100
Grand Total	82,580,078	81,585,764	57,023,243	13,125,793	70,149,036	85.98

5.2 Expenditures Reported by Category

Project expenditures are incurred and monitored by each Participating Organization and are reported as per the agreed categories for inter-agency harmonized reporting.

Table 5.2. Expenditure by UNSDG Budget Category, as of 31 December 2025 (in US Dollars)

Category	Expenditures			Percentage of Total Programme Cost
	Prior Years up to 31-Dec-2024	Financial Year Jan-Dec-2025	Total	
Staff & Personnel Cost	12,642,705	3,768,253	16,410,958	25.02
Supplies, commodities and materials	838,271	47,989	886,261	1.35
Equipment, vehicles, furniture and depreciation	395,064	14,493	409,558	0.62
Contractual Services Expenses	22,137,341	4,554,330	26,691,671	40.70
Travel	3,343,617	925,713	4,269,330	6.51
Transfers and Grants	6,502,226	1,324,903	7,827,129	11.93
General Operating	7,409,171	1,679,761	9,088,933	13.86
Programme Costs Total	53,268,396	12,315,443	65,583,840	100.00
² Indirect Support Costs Total	3,754,847	810,349	4,565,196	6.96
Grand Total	57,023,243	13,125,793	70,149,036	-

² Indirect Support Costs charged by Participating Organization, based on their financial regulations, can be deducted upfront or at a later stage during implementation. The percentage may therefore appear to exceed the 7% agreed upon for on-going projects. Once project is financially closed, this number is not to exceed 7%.

6. Cost Recovery

Cost recovery policies for the Fund are guided by the applicable provisions of the Terms of Reference, the MOU concluded between the Administrative Agent and Participating Organizations, and the SAAs concluded between the Administrative Agent and Contributors, based on rates approved by UNDG.

The policies in place, as of 31 December 2025, were as follows:

- **The Administrative Agent fee:** 1% is charged at the time of the contributor deposit and covers services provided on that contribution for the entire duration of the Fund. Cumulatively, as of 31 December 2025, US\$**1,090,770** has been charged in Administrative Agent fees.
- **Indirect Costs of Participating Organizations:** A general cost that cannot be directly related to any particular programme or activity of the Participating Organizations. Participating Organizations may charge 7% indirect costs based on UNSDG policy, establishing an indirect cost rate as a percentage of the programmable costs for interagency pass-through pool funds. In the current reporting period US\$**810,349** was deducted in indirect costs by Participating Organizations. Cumulatively, indirect costs amount to US\$**4,565,196** as of 31 December 2025.

7. Accountability and Transparency

In order to effectively provide fund administration services and facilitate monitoring and reporting to the UN system and its partners, the MPTF Office has developed a public website, the MPTF Office Gateway (<https://mptf.undp.org>). Refreshed daily from an internal enterprise resource planning system, the MPTF Office Gateway has become a standard setter for providing transparent and accountable trust fund administration services.

The Gateway provides financial information including: contributor commitments and deposits, approved programme budgets, transfers to and expenditures reported by Participating Organizations, interest income and other expenses. In addition, the Gateway provides an overview of the MPTF Office portfolio and extensive information on individual Funds, including their purpose, governance structure and key documents. By providing easy access to the growing number of narrative and financial reports, as well as related project documents, the Gateway collects and preserves important institutional knowledge and facilitates knowledge sharing and management among UN Organizations and their development partners, thereby contributing to UN coherence and development effectiveness.

8. Direct Costs

The Fund governance mechanism may approve an allocation to a Participating Organization to cover costs associated with Fund coordination covering overall coordination, and fund level reviews and evaluations. These allocations are referred to as 'direct costs'. Cumulatively, as of 31 December 2025, US\$**17,216,180** has been charged as Direct Costs.

Participating Organization	Approved Amount	Net Funded Amount	Expenditures			Delivery Rate %
			Prior Years up to 31-Dec-2024	Financial Year Jan-Dec-2025	Total	
UNDP	17,256,180	17,216,180	9,746,610	2,527,296	12,273,906	71.29
Grand Total	17,256,180	17,216,180	9,746,610	2,527,296	12,273,906	71.29

Annex

Country / Project No. and Project Title		Participating Organization	Total Approved Amount	Net Funded Amount	Total Expenditure	Delivery Rate ³ %
Algeria						
140462	Inception Phase 4FR, Algeria	UNFPA	70,000	70,000	52,644	75.21
Algeria: Total			70,000	70,000	52,644	75.21
Argentina						
126110	Promoting the realization of t	PAHO/WHO	100,000	100,000	100,000	100.00
126110	Promoting the realization of t	UNDP	200,000	200,000	193,785	96.89
126110	Promoting the realization of t	UNFPA	100,000	97,614	97,614	100.00
Argentina: Total			400,000	397,614	391,398	98.44
Armenia						
91319	UNPRPD Armenia Improving Acces	UNDP	218,528	218,528	218,528	100.00
91319	UNPRPD Armenia Improving Acces	UNICEF	330,978	330,978	330,978	100.00
126111	Creating enabling environment	UNDP	200,000	195,251	195,251	100.00
126111	Creating enabling environment	UNFPA	100,000	100,000	99,989	99.99
126111	Creating enabling environment	UNICEF	100,000	100,000	99,996	100.00
Armenia: Total			949,506	944,757	944,741	100.00
Azerbaijan						
140439	Inception Phase 4FR, Azerbaija	UNDP	70,000	68,647	68,647	100.00
Azerbaijan: Total			70,000	68,647	68,647	100.00
Bangladesh						
126112	Inception Phase 4th Funding Ro	ILO	298,658	282,369	282,369	100.00
126112	Inception Phase 4th Funding Ro	UNICEF	173,340	173,340	173,331	99.99
126112	Inception Phase 4th Funding Ro	UNWOMEN	227,763	225,898	225,898	100.00
Bangladesh: Total			699,761	681,607	681,598	100.00
Barbados						
140487	Inception Phase 4FR, Barbados	UNDP	70,000	70,000	55,393	79.13
Barbados: Total			70,000	70,000	55,393	79.13

³ Deliveries exceeding 100% will be adjusted at the final financial reporting and closure.

Country / Project No. and Project Title		Participating Organization	Total Approved Amount	Net Funded Amount	Total Expenditure	Delivery Rate ³ %
Benin						
108684	Delivering as One to Advance D	UNDP	100,000	100,000	100,000	100.00
108684	Delivering as One to Advance D	UNFPA	100,000	100,000	100,000	100.00
108684	Delivering as One to Advance D	UNICEF	100,000	99,662	99,662	100.00
108684	Delivering as One to Advance D	WHO	100,000	100,000	100,000	100.00
126113	Inception Phase 4th Funding Ro	UNDP	100,000	100,000	97,884	97.88
Benin: Total			500,000	499,662	497,546	99.58
Bhutan						
111046	Advancing the rights of people	UNDP	171,200	171,200	171,277	100.05
111046	Advancing the rights of people	UNICEF	127,150	127,150	127,150	100.00
111046	Advancing the rights of people	WHO	101,650	101,650	101,649	100.00
Bhutan: Total			400,000	400,000	400,076	100.02
Bolivia (Plurinational State of)						
92231	UNPRPD Bolivia Capacity for in	OHCHR	50,241	50,241	50,241	100.00
92231	UNPRPD Bolivia Capacity for in	UNESCO	143,444	116,482	116,482	100.00
92231	UNPRPD Bolivia Capacity for in	UNFPA	103,158	101,699	101,699	100.00
92231	UNPRPD Bolivia Capacity for in	UNICEF	145,555	145,148	145,148	100.00
92231	UNPRPD Bolivia Capacity for in	WHO	106,700	106,363	106,363	100.00
Bolivia (Plurinational State of): Total			549,098	519,933	519,933	100.00
Botswana						
140460	Inception Phase 4FR, Bostwana	UNDP	70,000	70,000	68,045	97.21
Botswana: Total			70,000	70,000	68,045	97.21
Cambodia						
109167	Access to justice without barr	OHCHR	189,166	183,190	183,190	100.00
109167	Access to justice without barr	UNDP	313,403	313,403	313,403	100.00
126114	Accelerating Disability rights	OHCHR	370,176	370,176	370,176	100.00
126114	Accelerating Disability rights	UNDP	590,792	590,792	572,585	96.92
126114	Accelerating Disability rights	UNESCO	209,032	209,032	197,867	94.66
Cambodia: Total			1,672,569	1,666,593	1,637,222	98.24
Cameroon						
126115	Strengthening Disability Right	OHCHR	312,538	312,538	269,238	86.15
126115	Strengthening Disability Right	UNESCO	618,792	618,792	483,965	78.21
126115	Strengthening Disability Right	UNFPA	268,669	268,669	234,553	87.30
Cameroon: Total			1,199,999	1,199,999	987,756	82.31

Country / Project No. and Project Title		Participating Organization	Total Approved Amount	Net Funded Amount	Total Expenditure	Delivery Rate ³ %
China						
91320	UNPRPD China Support to Rights	ILO	105,966	105,966	105,966	100.00
91320	UNPRPD China Support to Rights	UNDP	161,966	161,966	161,966	100.00
91320	UNPRPD China Support to Rights	UNESCO	201,966	201,547	201,547	100.00
91320	UNPRPD China Support to Rights	UNFPA	28,000	28,000	28,000	100.00
91320	UNPRPD China Support to Rights	UNICEF	52,100	52,100	52,100	100.00
132952	Enhancing D Rights & SD in Chi	ILO	88,000	88,000	79,156	89.95
132952	Enhancing D Rights & SD in Chi	UNESCO	224,000	224,000	190,569	85.08
132952	Enhancing D Rights & SD in Chi	UNFPA	88,000	88,000	75,906	86.26
China: Total			949,998	949,579	895,210	94.27
Colombia						
126116	Towards the Inclusion of Women	UNFPA	75,000	75,000	74,938	99.92
126116	Towards the Inclusion of Women	UNICEF	75,000	75,000	75,000	100.00
126116	Towards the Inclusion of Women	UNWOMEN	250,000	250,000	250,000	100.00
Colombia: Total			400,000	400,000	399,938	99.98
Congo (the Democratic Republic of the)						
126118	Inception Phase 4th Funding Ro	OHCHR	515,160	515,160	437,399	84.91
126118	Inception Phase 4th Funding Ro	UNESCO	109,675	109,675	100,464	91.60
126118	Inception Phase 4th Funding Ro	UNWOMEN	74,900	74,900	71,427	95.36
Congo (the Democratic Republic of the): Total			699,735	699,735	609,291	87.07
Cook Islands (the)						
126117	Arangatu Me Okota-I - Strength	UNDP	286,580	286,580	266,307	92.93
126117	Arangatu Me Okota-I - Strength	UNICEF	113,420	113,420	113,333	99.92
Cook Islands (the): Total			400,000	400,000	379,641	94.91
Costa Rica						
84088	UNPRPD Costa Rica National pla	ILO	223,588	215,657	215,657	100.00
84088	UNPRPD Costa Rica National pla	UNDP	326,412	326,412	326,412	100.00
140463	Inception Phase 4FR, Costa Ric	UNFPA	70,000	70,000	70,578	100.83
Costa Rica: Total			620,000	612,069	612,646	100.09
Djibouti						
116198	Advancing the rights of person	UNDP	217,963	216,150	216,150	100.00
116198	Advancing the rights of person	UNFPA	90,935	90,935	90,869	99.93
116198	Advancing the rights of person	UNICEF	91,102	91,102	91,102	100.00
Djibouti: Total			400,000	398,187	398,121	99.98

Country / Project No. and Project Title		Participating Organization	Total Approved Amount	Net Funded Amount	Total Expenditure	Delivery Rate ³ %
Dominican Republic (the)						
115410	Capacity Building for Soc Incl	PAHO/WHO	101,757	101,757	101,644	99.89
115410	Capacity Building for Soc Incl	UNDP	182,013	182,013	182,013	100.00
115410	Capacity Building for Soc Incl	UNICEF	106,251	106,251	106,251	100.00
Dominican Republic (the): Total			390,021	390,021	389,908	99.97
Ecuador						
132954	Inception Phase 4th Funding Ro	UNDP	100,000	100,000	99,770	99.77
132954	Inception Phase 4th Funding Ro	UNFPA	300,000	300,000	299,261	99.75
Ecuador: Total			400,000	400,000	399,032	99.76
Egypt						
91321	UNPRPD Egypt Jobs and Skills	ILO	317,295	305,117	305,117	100.00
91321	UNPRPD Egypt Jobs and Skills	UNDP	232,702	232,702	230,275	98.96
Egypt: Total			549,997	537,819	535,393	99.55
Eswatini						
126119	Strengthening the Inclusion an	UNESCO	186,676	186,676	180,782	96.84
126119	Strengthening the Inclusion an	UNFPA	751,609	751,609	728,688	96.95
126119	Strengthening the Inclusion an	UNICEF	260,990	260,990	245,028	93.88
Eswatini: Total			1,199,275	1,199,275	1,154,498	96.27
Ethiopia						
93449	Support to ADF - Regional proj	UNDP	414,000	414,000	414,000	100.00
95517	UNPRPD R2 Promoting social inc	ILO	549,675	549,675	549,675	100.00
141411	Delivering Inclusive Cities	GDI	200,419	200,419	-	-
Ethiopia: Total			1,164,094	1,164,094	963,675	82.78
Fiji						
84093	UNPRPD Pacific Island Countrie	ILO	64,200	64,200	64,200	100.00
84093	UNPRPD Pacific Island Countrie	OHCHR	200,000	155,717	155,717	100.00
84093	UNPRPD Pacific Island Countrie	UNICEF	243,000	239,574	239,574	100.00
84093	UNPRPD Pacific Island Countrie	WHO	42,800	42,680	42,680	100.00
133174	Inception Phase 4th Funding Ro	ILO	68,052	68,052	21,928	32.22
133174	Inception Phase 4th Funding Ro	OHCHR	263,893	263,893	60,034	22.75
133174	Inception Phase 4th Funding ⁴ Ro	UNESCO	68,052	68,052	-	-
Fiji: Total			949,997	902,168	584,132	64.75

⁴ Please note that the financial reporting has not yet been finalized due to a system change; this issue is currently being addressed.

Country / Project No. and Project Title		Participating Organization	Total Approved Amount	Net Funded Amount	Total Expenditure	Delivery Rate ³ %
Gambia (the)						
126130	Advancing the rights of person	UNFPA	549,867	549,867	485,541	88.30
126130	Advancing the rights of person	UNICEF	649,868	649,868	648,071	99.72
Gambia (the): Total			1,199,735	1,199,735	1,133,613	94.49
Georgia						
126120	Leave N one behind – from pol	OHCHR	200,000	200,000	158,997	79.50
126120	Leave N one behind – from pol	UNDP	300,000	300,000	235,482	78.49
126120	Leave N one behind – from pol	UNFPA	200,000	197,607	159,043	80.48
Georgia: Total			700,000	697,607	553,522	79.35
Ghana						
129552	Inception Phase 4th Funding Ro	UNDP	598,885	598,885	519,302	86.71
129552	Inception Phase 4th Funding Ro	UNFPA	101,115	101,115	56,346	55.72
Ghana: Total			700,000	700,000	575,648	82.24
Global and Interregional						
83525	UNPRPD Secretariat	UNDP	17,256,180	17,216,180	12,273,906	71.29
85729	UNPRPD Global Post-2015 develo	UNDESA	30,464	7,874	7,874	100.00
85729	UNPRPD Global Post-2015 develo	UNDP	64,200	15,456	-	-
85729	UNPRPD Global Post-2015 develo	UNICEF	160,179	157,930	157,930	100.00
91747	UNPRPD - Disability Statistics	ILO	125,201	92,890	92,890	100.00
91747	UNPRPD - Disability Statistics	UNFPA	21,400	21,400	21,400	100.00
91747	UNPRPD - Disability Statistics	UNICEF	139,101	134,522	134,522	100.00
91747	UNPRPD - Disability Statistics	WHO	117,699	117,699	117,699	100.00
96832	Enhancing multi-stakeholder di	UNICEF	128,400	128,400	128,400	100.00
112679	Formulation of a UN system-wid	EOSG	1,049,850	1,049,850	1,049,850	100.00
112679	Formulation of a UN system-wid	ILO	124,997	99,324	99,324	100.00
113185	Advancing participation of per	UNDP	99,992	99,992	97,706	97.71
115083	TOWARDS INCLUSIVE SOCIAL PROTE	ILO	589,590	559,274	559,274	100.00
115083	TOWARDS INCLUSIVE SOCIAL PROTE	UNICEF	110,410	110,117	110,117	100.00
116192	Advancing inclusive education	UNESCO	345,985	317,517	317,517	100.00
116192	Advancing inclusive education	UNICEF	353,150	351,856	351,856	100.00
121258	Understanding how to use an in	UNWOMEN	99,510	99,510	99,510	100.00
122664	UN joint programme to support	ILO	200,000	198,924	198,924	100.00
122664	UN joint programme to support	OHCHR	199,106	198,396	198,396	100.00

Country / Project No. and Project Title		Participating Organization	Total Approved Amount	Net Funded Amount	Total Expenditure	Delivery Rate ³ %
122664	UN joint programme to support	UNDESA	98,440	77,492	77,492	100.00
122664	UN joint programme to support	UNDP	199,983	199,983	174,334	87.17
122664	UN joint programme to support	UNESCO	200,000	168,209	168,209	100.00
122664	UN joint programme to support	UNFPA	200,000	200,000	199,533	99.77
122664	UN joint programme to support	UNICEF	200,000	200,000	200,000	100.00
122664	UN joint programme to support	UNWOMEN	400,000	400,000	398,232	99.56
122664	UN joint programme to support	WHO	199,020	199,020	199,020	100.00
122780	Supporting national implementa	OHCHR	95,432	95,432	94,931	99.48
123376	UNDIS: A Framework for Trans.	EOSG	3,767,048	3,767,048	3,659,292	97.14
126346	Ending Stigma and Discriminati	ILO	193,884	192,793	192,793	100.00
126346	Ending Stigma and Discriminati	UNESCO	306,116	305,866	305,866	100.00
126482	Addressing stigma, discriminat	UNDP	250,000	250,000	245,478	98.19
126482	Addressing stigma, discriminat	UNWOMEN	250,000	250,000	225,015	90.01
134089	Mainstreaming a disability inc	OHCHR	134,999	128,755	128,755	100.00
134089	Mainstreaming a disability inc	UNFPA	150,000	149,499	149,499	100.00
134089	Mainstreaming a disability inc	UNICEF	135,000	135,000	134,944	99.96
134089	Mainstreaming a disability inc	UNWOMEN	150,000	150,000	148,611	99.07
134089	Mainstreaming a disability inc	WHO	229,853	229,853	229,851	100.00
140138	Mapping and strengthening comt	ILO	91,594	91,594	89,876	98.12
140138	Mapping and strengthening comt	WHO	208,310	208,310	208,308	100.00
140190	Map strength community-based r	OHCHR	86,670	86,670	86,613	99.93
140190	Map strength community-based r	UNICEF	213,310	213,310	211,071	98.95
140259	Climate Change, disability inc	ILO	199,983	199,983	198,968	99.49
140259	Climate Change, disability inc	OHCHR	199,835	199,835	197,434	98.80
140259	Climate Change, disability inc	UNDP	199,827	199,827	85,071	42.57
140504	Inception Phase 4FR, Pacific	UNICEF	500,000	500,000	458,228	91.65
140509	TS to earmarked programmes	UNDP	566,355	566,355	322,109	56.87
140719	Unpaid care programme	ILO	209,752	209,752	81,660	38.93
140719	Unpaid care programme	OHCHR	251,771	251,771	161,259	64.05
140719	Unpaid care programme	UNDP	1,377,640	1,377,640	647,675	47.01
140719	Unpaid care programme	UNFPA	629,250	629,250	330,816	52.57
140719	Unpaid care programme	UNICEF	755,420	755,420	333,882	44.20
140719	Unpaid care programme	UNWOMEN	839,000	839,000	287,424	34.26
Global and Interregional: Total			34,703,906	34,404,778	26,649,343	77.46

Country / Project No. and Project Title		Participating Organization	Total Approved Amount	Net Funded Amount	Total Expenditure	Delivery Rate ³ %
Guatemala						
109261	Addressing Labor Inclusion for	OHCHR	107,643	107,643	107,643	100.00
109261	Addressing Labor Inclusion for	UNDP	184,714	184,714	184,714	100.00
109261	Addressing Labor Inclusion for	UNESCO	107,643	107,643	107,643	100.00
126121	Establishing the preconditions	OHCHR	292,891	292,891	268,662	91.73
126121	Establishing the preconditions	UNDP	274,145	274,145	226,278	82.54
126121	Establishing the preconditions	UNFPA	132,964	132,964	87,163	65.55
Guatemala: Total			1,100,000	1,100,000	982,104	89.28
India						
91322	UNPRPD India Promoting Rights	UNDP	199,876	199,876	199,876	100.00
91322	UNPRPD India Promoting Rights	UNESCO	150,000	149,705	149,705	100.00
91322	UNPRPD India Promoting Rights	UNICEF	200,000	200,000	200,000	100.00
India: Total			549,876	549,581	549,581	100.00
Indonesia						
84090	UNPRPD Indonesia Promoting the	ILO	278,747	273,882	273,882	100.00
84090	UNPRPD Indonesia Promoting the	UNESCO	78,875	77,342	77,342	100.00
84090	UNPRPD Indonesia Promoting the	WHO	169,852	169,852	169,852	100.00
Indonesia: Total			527,474	521,076	521,076	100.00
Jordan						
140723	Inception Phase Jordan	OHCHR	99,510	99,510	68,869	69.21
Jordan: Total			99,510	99,510	68,869	69.21
Kenya						
132955	Inception Phase 4th Funding Ro	ILO	287,570	287,570	174,188	60.57
132955	Inception Phase 4th Funding Ro	UNFPA	220,000	220,000	145,132	65.97
132955	Inception Phase 4th Funding Ro	UNICEF	192,430	192,430	21,409	11.13
Kenya: Total			700,000	700,000	340,729	48.68
Korea (the Democratic People's Republic of)						
112316	UNPRPD - DPRK - Leveraging Ear	UNICEF	200,002	127,298	127,298	100.00
Korea (the Democratic People's Republic of): Total			200,002	127,298	127,298	100.00
Kosovo (As per UNSCR 1244)						
140440	Inception Phase 4FR, Kosovo	UNICEF	70,000	70,000	69,944	99.92
Kosovo (As per UNSCR 1244): Total			70,000	70,000	69,944	99.92

Country / Project No. and Project Title		Participating Organization	Total Approved Amount	Net Funded Amount	Total Expenditure	Delivery Rate ³ %
Kyrgyzstan						
132953	Advancing D Rights in Kyrgyzst	UNDP	350,214	350,214	328,393	93.77
132953	Advancing D Rights in Kyrgyzst	UNFPA	174,893	174,893	174,782	99.94
132953	Advancing D Rights in Kyrgyzst	UNICEF	174,893	174,893	167,675	95.87
Kyrgyzstan: Total			700,000	700,000	670,849	95.84
Malawi						
109168	Advancing disability rights to	UNDP	100,000	100,000	96,729	96.73
109168	Advancing disability rights to	UNFPA	100,000	61,629	61,629	100.00
109168	Advancing disability rights to	UNICEF	100,000	98,678	98,678	100.00
109168	Advancing disability rights to	UNWOMEN	100,000	100,000	98,667	98.67
140482	Inception Phase 4FR, Malawi	UNICEF	70,000	70,000	69,898	99.85
Malawi: Total			470,000	430,307	425,601	98.91
Maldives						
140461	Inception Phase 4FR, Maldives	UNDP	70,000	70,000	69,421	99.17
Maldives: Total			70,000	70,000	69,421	99.17
Mali						
140464	Inception Phase 4FR, Mali	UNFPA	70,000	70,000	68,068	97.24
141175	Inclusive and Resilient SRP: M	UNICEF	200,000	200,000	-	-
Mali: Total			270,000	270,000	68,068	25.21
Mexico						
94644	UNPRPD Mexico	PAHO/WHO	87,500	87,155	87,155	100.00
94644	UNPRPD Mexico	UNDP	375,002	375,002	375,002	100.00
94644	UNPRPD Mexico	UNICEF	87,500	87,500	87,500	100.00
Mexico: Total			550,002	549,657	549,657	100.00
Moldova (the Republic of)						
84091	UNPRPD Moldova Paradigm shift	OHCHR	138,052	134,318	134,318	100.00
84091	UNPRPD Moldova Paradigm shift	UNDP	163,111	163,111	163,111	100.00
84091	UNPRPD Moldova Paradigm shift	UNICEF	104,570	102,881	102,881	100.00
84091	UNPRPD Moldova Paradigm shift	WHO	144,160	140,945	140,945	100.00
126122	Paradigm Shift to Disability I	OHCHR	165,152	165,152	165,152	100.00
126122	Paradigm Shift to Disability I	UNDP	354,874	352,512	352,512	100.00
126122	Paradigm Shift to Disability I	UNICEF	179,974	179,974	179,630	99.81
Moldova (the Republic of): Total			1,249,893	1,238,894	1,238,550	99.97

Country / Project No. and Project Title		Participating Organization	Total Approved Amount	Net Funded Amount	Total Expenditure	Delivery Rate ³ %
Montenegro						
126123	Accelerating Disability Inclus	UNDP	277,005	277,005	185,074	66.81
126123	Accelerating Disability Inclus	UNICEF	422,995	422,995	382,647	90.46
Montenegro: Total			700,000	700,000	567,721	81.10
Morocco						
109892	Changing mindsets and instilli	UNDP	87,587	87,587	86,842	99.15
109892	Changing mindsets and instilli	UNESCO	142,854	142,854	142,853	100.00
109892	Changing mindsets and instilli	UNFPA	90,608	84,971	84,971	100.00
109892	Changing mindsets and instilli	WHO	78,645	78,645	78,645	100.00
Morocco: Total			399,694	394,057	393,311	99.81
Mozambique						
84087	UNPRPD Mozambique UN Partnersh	UNDP	100,366	100,366	100,366	100.00
84087	UNPRPD Mozambique UN Partnersh	UNICEF	239,680	238,353	238,353	100.00
133175	Partnering for DR in Mozambique	OHCHR	180,541	180,541	153,391	84.96
133175	Partnering for DR in Mozambique	UNFPA	198,505	198,505	197,045	99.26
133175	Partnering for DR in Mozambique	UNICEF	320,954	320,954	228,201	71.10
Mozambique: Total			1,040,046	1,038,719	917,356	88.32
Namibia						
113184	UNPRPD_R3_ Access to Services	UNDP	122,748	122,748	122,748	100.00
113184	UNPRPD_R3_ Access to Services	UNFPA	99,428	99,428	99,428	100.00
113184	UNPRPD_R3_ Access to Services	UNICEF	177,824	177,824	177,824	100.00
Namibia: Total			400,000	400,000	400,000	100.00
Nepal						
112314	UNPRPD - NEPAL- Aawaaz (Voice)	UNDP	176,505	176,134	176,134	100.00
112314	UNPRPD - NEPAL- Aawaaz (Voice)	UNFPA	100,000	100,000	100,000	100.00
112314	UNPRPD - NEPAL- Aawaaz (Voice)	UNWOMEN	100,000	100,000	99,653	99.65
112314	UNPRPD - NEPAL- Aawaaz (Voice)	WHO	153,500	153,500	153,500	100.00
126124	Disability inclusive developme	UNDP	320,000	320,000	307,168	95.99
126124	Disability inclusive developme	UNWOMEN	150,000	150,000	152,079	101.39
126124	Disability inclusive developme	WHO	200,000	200,000	200,001	100.00
Nepal: Total			1,200,005	1,199,634	1,188,534	99.07

Country / Project No. and Project Title		Participating Organization	Total Approved Amount	Net Funded Amount	Total Expenditure	Delivery Rate ³ %
Nigeria						
140465	Inception Phase 4FR, Nigeria	UNESCO	70,000	70,000	48,512	69.30
Nigeria: Total			70,000	70,000	48,512	69.30
North Macedonia						
110653	Working bottom up - building a	UNDP	100,000	100,000	100,000	100.00
110653	Working bottom up - building a	UNFPA	100,000	91,708	91,708	100.00
110653	Working bottom up - building a	UNICEF	100,000	100,000	100,000	100.00
110653	Working bottom up - building a	UNWOMEN	100,000	91,939	91,939	100.00
126125	From Knowledge and Engagement	UNDP	100,000	99,724	99,724	100.00
126125	From Knowledge and Engagement	UNFPA	100,000	93,534	93,788	100.27
126125	From Knowledge and Engagement	UNICEF	200,000	200,000	199,971	99.99
North Macedonia: Total			800,000	776,905	777,131	100.03
Pakistan						
109169	Moving from Charity model to R	UNWOMEN	400,000	397,234	397,234	100.00
Pakistan: Total			400,000	397,234	397,234	100.00
Palestine, State of						
87521	UNPRPD Palestine Awareness & M	ILO	74,900	74,332	74,332	100.00
87521	UNPRPD Palestine Awareness & M	UNDP	48,150	48,150	48,150	100.00
87521	UNPRPD Palestine Awareness & M	UNICEF	135,890	135,890	135,890	100.00
87521	UNPRPD Palestine Awareness & M	WHO	90,950	90,950	90,950	100.00
140807	Enabling international respons	OHCHR	166,050	166,050	86,680	52.20
140807	Enabling international respons	UNWOMEN	333,950	333,950	348,770	104.44
Palestine, State of: Total			849,890	849,322	784,773	92.40
Panama						
126126	Advancing in the setting of a	ILO	100,000	94,099	94,099	100.00
126126	Advancing in the setting of a	PAHO/WHO	100,000	98,950	98,950	100.00
126126	Advancing in the setting of a	UNESCO	100,000	99,439	99,439	100.00
126126	Advancing in the setting of a	UNWOMEN	100,000	100,000	92,379	92.38
Panama: Total			400,000	392,488	384,866	98.06

Country / Project No. and Project Title		Participating Organization	Total Approved Amount	Net Funded Amount	Total Expenditure	Delivery Rate ³ %
Peru						
109170	ACCESS TO DECENT EMPLOYMENT FO	ILO	111,815	109,622	109,622	100.00
109170	ACCESS TO DECENT EMPLOYMENT FO	UNESCO	117,433	117,433	117,433	100.00
109170	ACCESS TO DECENT EMPLOYMENT FO	UNFPA	123,401	120,800	120,800	100.00
133176	TVET education and work access	ILO	199,510	197,112	116,547	59.13
133176	TVET education and work access	UNESCO	200,000	200,000	146,703	73.35
141408	Cultural heritage as a driver	IDB	200,000	200,000	13,084	6.54
Peru: Total			952,159	944,968	624,190	66.05
Philippines (the)						
141142	Disability Inclusive RICH-MHEW	UNDRR	200,000	200,000	182,017	91.01
Philippines (the): Total			200,000	200,000	182,017	91.01
Rwanda						
126127	Strengthening disability inclu	UNDP	456,406	456,406	394,361	86.41
126127	Strengthening disability inclu	UNICEF	132,680	132,376	132,376	100.00
126127	Strengthening disability inclu	UNWOMEN	110,914	110,914	94,107	84.85
Rwanda: Total			700,000	699,697	620,845	88.73
Sao Tome and Principe						
140438	Inception Phase 4FR, Sao Tome	UNDP	70,000	70,000	50,756	72.51
Sao Tome and Principe: Total			70,000	70,000	50,756	72.51
Serbia						
109257	AutoNmy, Voice and Participat	ILO	24,610	24,487	24,487	100.00
109257	AutoNmy, Voice and Participat	OHCHR	122,611	108,669	108,669	100.00
109257	AutoNmy, Voice and Participat	UNDP	106,433	106,433	106,433	100.00
109257	AutoNmy, Voice and Participat	UNFPA	30,890	29,023	29,023	100.00
109257	AutoNmy, Voice and Participat	UNWOMEN	114,918	114,918	114,918	100.00
132956	Strengthening ERBIA in Serbia	UNDP	117,797	117,797	117,761	99.97
132956	Strengthening ERBIA in Serbia	UNFPA	88,594	88,594	88,229	99.59
132956	Strengthening ERBIA in Serbia	UNWOMEN	193,609	193,609	193,609	100.00
Serbia: Total			799,462	783,530	783,127	99.95
Sierra Leone						
126128	Advancing Disability Inclusion	UNDP	190,000	190,000	147,647	77.71
126128	Advancing Disability Inclusion	UNFPA	320,000	299,906	299,906	100.00
126128	Advancing Disability Inclusion	UNICEF	190,000	190,000	190,000	100.00
Sierra Leone: Total			700,000	679,906	637,553	93.77

Country / Project No. and Project Title		Participating Organization	Total Approved Amount	Net Funded Amount	Total Expenditure	Delivery Rate ³ %
South Africa						
85929	Strengthening Disability Inclu	OHCHR	140,170	98,443	98,443	100.00
85929	Strengthening Disability Inclu	UNDP	113,420	113,420	113,420	100.00
85929	Strengthening Disability Inclu	UNICEF	96,300	96,300	96,300	100.00
125195	Strengthening Disability Inclu	OHCHR	32,100	18,473	18,473	100.00
125195	Strengthening Disability Inclu	UNDP	80,965	80,692	80,692	100.00
125195	Strengthening Disability Inclu	UNICEF	86,918	83,162	83,162	100.00
South Africa: Total			549,873	490,489	490,489	100.00
Sri Lanka						
140477	Inception Phase 4FR, Sri Lanka	UNDP	70,000	70,000	69,836	99.77
Sri Lanka: Total			70,000	70,000	69,836	99.77
Sudan (the)						
91323	UNPRPD Sudan Promoting Access	UNESCO	251,980	248,193	248,193	100.00
91323	UNPRPD Sudan Promoting Access	UNICEF	117,700	117,700	117,700	100.00
91323	UNPRPD Sudan Promoting Access	WHO	180,000	150,999	150,999	100.00
Sudan (the): Total			549,680	516,892	516,892	100.00
Tajikistan						
92306	UNPRPD Tajikistan Inclusive Po	UNDP	155,000	155,000	155,000	100.00
92306	UNPRPD Tajikistan Inclusive Po	UNICEF	213,071	213,071	213,071	100.00
92306	UNPRPD Tajikistan Inclusive Po	WHO	181,929	181,929	181,929	100.00
Tajikistan: Total			550,000	550,000	550,000	100.00
Tanzania, United Republic of						
126129	UN Joint Programme to Advance	UNFPA	470,175	467,970	467,970	100.00
126129	UN Joint Programme to Advance	UNWOMEN	229,575	229,575	229,429	99.94
Tanzania, United Republic of: Total			699,750	697,545	697,399	99.98
Timor-Leste						
109007	Empower for Change - Reducing	UNWOMEN	279,090	279,090	279,090	100.00
109007	Empower for Change - Reducing	WHO	120,910	120,910	120,910	100.00
133177	Empower for Inclusion - Timor	UNICEF	123,723	123,723	104,593	84.54
133177	Empower for Inclusion - Timor	UNWOMEN	576,277	576,277	604,157	104.84
Timor-Leste: Total			1,100,000	1,100,000	1,108,750	100.80

Country / Project No. and Project Title		Participating Organization	Total Approved Amount	Net Funded Amount	Total Expenditure	Delivery Rate ³ %
Togo						
84094	UNPRPD Togo Promoting the righ	OHCHR	39,572	39,572	39,572	100.00
84094	UNPRPD Togo Promoting the righ	UNICEF	345,504	345,504	345,504	100.00
84094	UNPRPD Togo Promoting the righ	WHO	163,072	162,323	162,323	100.00
Togo: Total			548,148	547,399	547,399	100.00
Trinidad and Tobago						
126131	#NoOneLeftBehind: Empowering P	PAHO/WHO	270,102	253,303	253,303	100.00
126131	#NoOneLeftBehind: Empowering P	UNFPA	129,898	128,394	128,296	99.92
Trinidad and Tobago: Total			400,000	381,697	381,599	99.97
Tunisia						
87795	UNPRPD New Tunisia	ILO	65,000	50,891	50,891	100.00
87795	UNPRPD New Tunisia	OHCHR	261,095	109,105	109,105	100.00
87795	UNPRPD New Tunisia	UNDP	38,958	22,983	22,983	100.00
87795	UNPRPD New Tunisia	UNICEF	185,000	184,502	184,502	100.00
126132	Inception Phase 4th Funding Ro	OHCHR	145,047	145,047	47,832	32.98
126132	Inception Phase 4th Funding Ro	UNESCO	203,000	198,647	198,647	100.00
126132	Inception Phase 4th Funding Ro	UNFPA	351,953	343,648	343,648	100.00
Tunisia: Total			1,250,053	1,054,823	957,608	90.78
Uganda						
92230	UNPRPD Uganda Promoting Rights	UNESCO	226,417	206,258	206,258	100.00
92230	UNPRPD Uganda Promoting Rights	UNICEF	317,790	317,790	317,790	100.00
Uganda: Total			544,207	524,048	524,048	100.00
Ukraine						
84095	UNPRPD Ukraine Promoting mains	UNDP	415,800	415,800	415,800	100.00
84095	UNPRPD Ukraine Promoting mains	UNICEF	58,900	58,900	58,900	100.00
84095	UNPRPD Ukraine Promoting mains	WHO	58,900	58,890	58,890	100.00
131808	Mainstreaming gender-responsiv	UNDP	278,200	277,779	277,779	100.00
131808	Mainstreaming gender-responsiv	UNFPA	222,083	222,083	221,862	99.9
131808	Mainstreaming gender-responsiv	UNICEF	227,910	227,910	227,878	99.99
131808	Mainstreaming gender-responsiv	UNWOMEN	107,000	107,000	106,599	99.62
140407	Developing UN Coordinated DI i	WHO	300,000	300,000	300,000	100.00
Ukraine: Total			1,668,793	1,668,362	1,667,708	99.96

Country / Project No. and Project Title		Participating Organization	Total Approved Amount	Net Funded Amount	Total Expenditure	Delivery Rate ³ %
Uruguay						
109025	The right to equality and Nn	PAHO/WHO	122,076	122,076	121,947	99.89
109025	The right to equality and Nn	UNFPA	215,975	215,005	215,005	100.00
109025	The right to equality and Nn	UNWOMEN	188,904	188,904	187,091	99.04
140441	Inception Phase 4FR, Uruguay	UNFPA	70,000	70,000	69,997	100.00
Uruguay: Total			596,955	595,985	594,040	99.67
Uzbekistan						
126133	Transformation of Social Servi	UNDP	325,000	325,000	289,396	89.04
126133	Transformation of Social Servi	UNFPA	225,000	225,000	223,858	99.49
126133	Transformation of Social Servi	UNICEF	650,000	650,000	580,289	89.28
Uzbekistan: Total			1,200,000	1,200,000	1,093,544	91.13
Viet Nam						
85728	UNPRPD Vietnam Disability Righ	ILO	150,000	144,474	144,474	100.00
85728	UNPRPD Vietnam Disability Righ	UNDP	210,000	210,000	210,000	100.00
85728	UNPRPD Vietnam Disability Righ	UNICEF	190,000	190,000	190,000	100.00
126134	UNJP: Working together for an	UNDP	635,759	635,759	485,968	76.44
126134	UNJP: Working together for an	UNFPA	281,980	281,980	217,918	77.28
126134	UNJP: Working together for an	UNICEF	281,980	281,980	189,537	67.22
Viet Nam: Total			1,749,719	1,744,193	1,437,897	82.44
Zambia						
109891	Promoting disability inclusion	ILO	241,686	240,817	240,817	100.00
109891	Promoting disability inclusion	UNFPA	158,314	152,770	152,770	100.00
133178	Inception Phase 4th Funding Ro	ILO	169,174	169,174	101,785	60.17
133178	Inception Phase 4th Funding Ro	UNDP	175,641	175,641	102,820	58.54
133178	Inception Phase 4th Funding Ro	UNICEF	355,184	355,184	260,464	73.33
Zambia: Total			1,099,999	1,093,586	858,656	78.52
Zimbabwe						
108075	Advancing the Rights of Women	UNDP	100,000	96,887	96,887	100.00
108075	Advancing the Rights of Women	UNESCO	317,196	317,196	317,196	100.00
108075	Advancing the Rights of Women	UNFPA	100,000	100,000	100,000	100.00
126135	Strengthening Disability Right	UNDP	275,000	275,000	281,703	102.44
126135	Strengthening Disability Right	UNESCO	620,000	620,000	611,784	98.67
126135	Strengthening Disability Right	UNFPA	275,000	275,000	267,318	97.21
Zimbabwe: Total			1,687,196	1,684,083	1,674,889	99.45
Grand Total			82,580,078	81,585,764	70,149,036	85.98



Endnotes



1. The 30,560 stakeholders trained include 5,611 government officials and service providers, 5,930 OPD representatives, 235 UN staff and 18,784 others.
2. The 120 knowledge products developed through national programmes in 2025 include 64 guidelines, 42 reports, and 14 tools
3. In 2025, 10 countries completed developing a situational analysis. These were Algeria, Azerbaijan, Costa Rica, Malawi, Mali, Sao Tome and Principe, Jordan, Barbados, State of Palestine and the Pacific Region.
4. Underrepresented persons with disabilities are those with less formal representation within the disability movement, such as persons with intellectual disabilities, persons with psychosocial disabilities, persons with autism, persons with albinism, persons who are deaf or blind and little people. Marginalized persons with disabilities are those who experience multiple and intersecting forms of discrimination based on disability and other factors such as age, location, race, ethnicity, indigenous identity, gender identity and expression, sexual orientation, sex characteristics, religion, migration status, and others.
5. In 2025, GDF national programmes worked towards developing, revising, or reforming 12 laws, 17 policies, 4 Reviews, 28 regulations, and 37 system-level changes.
6. In 2025, UN GDF supported finalisation of nine situational analyses (Algeria, Azerbaijan, Costa Rica, Malawi, Mali, Sao Tome and Principe, Jordan, Barbados, State of Palestine) and one regional situational analysis in the Pacific (covering Federated States of Micronesia, Kiribati, Marshall Islands, Nauru, Palau, Samoa, Solomon Islands, Tonga, Tuvalu, Vanuatu).
7. Source: UNDIS UNCT Reports and GDF programme reports for 2025.
8. 114 percent is based on the initial estimate when the SOF was developed in 2020.
9. The GDF's 57 joint programmes include only national programmes either at the implementation or inception phase. Multi-country programmes are captured under a separate target in the SOF.
10. 114 percent is based on the initial estimate when the SOF was developed in 2020.
11. 52 percent is based on the actual number of countries placed in the pipeline following the Round 4 call in 2020.
12. 213 percent is based on GDF's annual budget of US\$10 million as outlined in the SOF.
13. 78 percent represents the proportion of funds generated to implement the SOF, compared to the total resources required for all Round 4 submissions.
14. The designations employed and the presentation of material on this map do not imply the expression of any opinion whatsoever on the part of the Secretariat of the United Nations concerning the legal status of any country, territory, city or area or of its authorities, or concerning the delimitation of its frontiers or boundaries.



Global Disability Fund



globaldisabilityfund.org

 @UN_GDF

 linkedin.com/company/unprpd