



# 2018 Annual Report

## UN HAITI CHOLERA RESPONSE MULTI-PARTNER TRUST FUND





# New UN approach to cholera in Haiti

UN Secretary-General Antonio Guterres has successfully led the UN and its partners to work closely with the Government of Haiti in implementing the new approach to cholera: significant progress has been made towards elimination of the disease, as well as the provision of material assistance and support to communities most directly affected. The UN, in partnership with the Government of Haiti, has intensified its support to treat and reduce cholera, and ultimately to cut the transmission of the disease to zero and end this chapter with dignity. In addition, the UN has sought to increase investment in long-term solutions that facilitates equitable and sustainable access to water, sanitation and health systems, while developing a package of material assistance and support for those Haitians most directly affected by cholera. Successfully ending the cholera epidemic will require adequate resources and will, and a concerted focus on coordination and partnership with all stakeholders, including the Government and People of Haiti, the UN, the International Community and Civil Society.

## **TRACK 1**

### **INTENSIFYING SUPPORT FOR CHOLERA CONTROL AND RESPONSE**

The first track is a greatly intensified effort to respond to and reduce the incidence of cholera in Haiti.

**Track 1a:** Intensifying support for cholera control and response

- ⇒ Rapid Response
- ⇒ Surveillance
- ⇒ Vaccination
- ⇒ Emergency Medical Care

**Track 1b:** Addressing effectively the medium to long-term solutions on water, sanitation and health systems

## **TRACK 2**

### **PROVIDING MATERIAL ASSISTANCE FOR THOSE MOST AFFECTED BY CHOLERA**

# CONTENT

1

FOREWORD

3

OVERVIEW OF THE FUND OPERATIONS

7

FUND FACTS

8

CONTRIBUTORS

10

KEY ACHIEVEMENTS

15

FINANCIAL INFORMATION

## CONTRIBUTORS

	ALGERIA		IRELAND		PHILIPPINES
	ARGENTINA		ISRAEL		PORTUGAL
	BAHAMAS		ITALY		QATAR
	BELGIUM		JAMAICA		REPUBLIC of KOREA
	BELIZE		JAPAN		SENEGAL
	CANADA		LIECHTENSTEIN		SLOVAK REPUBLIC
	CHILE		LUXEMBOURG		SRI LANKA
	COTE D'IVOIRE		MEXICO		SUDAN
	CUBA		MYANMAR		SWEDEN
	CYPRUS		NEPAL		UKRAINE
	FRANCE		NETHERLANDS		UNITED KINGDOM
	GRENADA		NORWAY		URUGUAY
	GUYANA		PALAU		VENEZUELA
	INDIA		PARAGUAY		OPEN SOCIETY FOUNDATION

## RECIPIENT ORGANIZATIONS



Empowered lives.  
Resilient nations.



## FOREWORD

Haiti is on the threshold of ending the transmission of cholera. Progress in reducing transmission rates has been significant in the last two years since the aftermath of Hurricane Matthew in 2016, when over 41,000 suspected cases were reported. With less than 308 suspected cases reported from 1 January up to 20 April 2019, the year has started with encouraging signs that we are incredibly close to defeating the disease. Even more significant is that laboratory testing of suspected cases has been strengthened and we are now seeing several weeks go by with zero laboratory-confirmed cases. However, one case of cholera, is still one too many, so we must make sure we maintain the momentum, until we achieve the WHO target of zero laboratory confirmed cases for three years.



As tireless and innovative efforts by the Government of Haiti and key partners are realized, we must be clear about the steps that need to be taken to ensure all the hard-won gains are not lost. The Haitian Government's Long-Term Plan for the elimination of cholera, jointly endorsed by Prime Minister Jean Henry Céant and me during my visit to Haiti in November 2018, and recently launched by the Ministry of Public Health and Population, will carry forward efforts to reinforce national capacity in surveillance, laboratory analysis, community health care and a long-term community alert and response system for the period from 2019 to 2022. These investments, which align with the Secretary-General's plans for Track 1a in the New Approach to cholera in Haiti, are critical for the final stages of cholera elimination and for reducing the many other water-borne diseases, as well as strengthening emergency response capacity in the event of sudden onset emergencies.

The Long-Term Plan will serve as a roadmap to cut the transmission of cholera, as well as lay out needed investments required in priority communes to build up water, sanitation, waste treatment and health care as part of extended efforts towards achieving the Sustainable Development Goals in Haiti. These efforts also align with Track 1b of the new approach. We must continue to work simultaneously on both elements of Track 1.

I am pleased to report that the pilot phase of Track 2, which focuses on supporting victims of cholera and their communities through community-centered material support projects has concluded successfully. I was honored that 42 countries answered the call of the Secretary-General and contributed to the UN Haiti Cholera Response MPTF, making it one of the most widely supported Trust Funds in the MPTF portfolio.

In 2018, I was also especially honored to have participated in the inauguration of the market in Crête Brûlée in November and was amazed by the community's positive reaction. This market, which will benefit as many as 45,000 people, is an example of how Track 2 gives a voice to affected communities and can change lives. We have shown that the UN is listening to Haitians and creating opportunities for empowerment and healing which can support communities affected by cholera, and restore trust in the UN. I am thrilled that Track 2 projects will now be expanded to 20 additional communities starting in 2019 and will build on the success of this consultation process that seeks to provide the best possible outcomes to communities and victims, with and the most efficient and transparent use of donors' money. We strongly appeal for more support for Track 2 so that we can widen the number of communities that we can reach and end this chapter in Haiti with dignity.

Josette Sheeran  
UN Secretary-General's Special Envoy for Haiti



# OVERVIEW OF THE FUND OPERATIONS

**A**s we close in on prolonged periods of ‘zero laboratory-confirmed cases’ of cholera in Haiti, the Office of the Special Envoy remains focused on supporting the coordinated efforts of the Government of Haiti and key partners to completely cut the transmission of the disease.

## Résumé de la Situation du Choléra, Haïti, 2010 à 2019

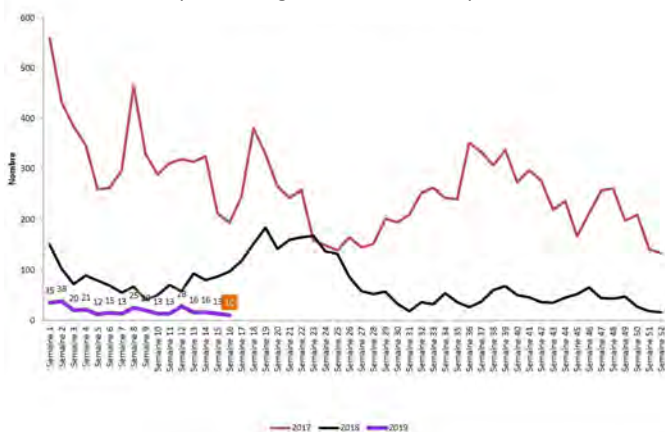
Année	Population	Cas Suspects	Décès Institutionnels	Décès communautaires	Total Décès	Taux d'incidence par 1000 hbts
2010	10085214	185351	2521	1580	4101	18.38
2011	10248306	352033	1950	977	2927	34.35
2012	10413211	101503	597	311	908	9.75
2013	10579230	58574	403	184	587	5.54
2014	10745665	27392	209	88	297	2.55
2015	10911819	36045	224	98	322	3.30
2016	11078033	41421	307	140	447	3.74
2017	12201437	13681	110	49	159	1.12
2018	12542135	3777	20	21	41	0.30
2019	12893402	308	2	1	3	0.02

Source: Ministry of Health Haiti - 20 April 2019

### Track 1

Under the leadership of the Haitian Ministry of Public Health and Population (MSPP) as well as the National Directorate of Water Supply and Sanitation (DINEPA), progress in reducing transmission rates has been significant since the end of 2016. Early signs in 2019 indicate that the benchmark of “a prolonged period” of zero laboratory-confirmed cases is very close which puts Haiti at the threshold of elimination.

Weekly Cholera Suspected Cases, 2016-2019  
Epidemiological Week 16, 20 April 2019



Source: Ministry of Health Haiti - 20 April 2019

Cholera elimination is defined by the Global Task Force for Cholera Control (GFTCC) as “**any country that reports no confirmed cases with evidence of local transmission for at least three consecutive years and has a well-functioning epidemiologic and laboratory surveillance system able to detect and confirm cases.**” The Haiti National Cholera Elimination Plan has elimination as the national objective by 2022 but measures it as one suspected case in 10,000 or 0.001% incidence rate.

So far, the number of suspect cholera cases for epidemiological weeks (EW) 1–16 of 2019 is 24.5% of those reported during the same period of 2018 (308 vs. 1,257). Today virtually all suspected cases are laboratory tested allowing the Government and partners to track the incidence of cholera transmission. Importantly, we have now seen a number of weeks with no confirmed cases in the most affected departments. The next objective is to maintain the period of ‘zero-confirmed cases’ for up to three years.

In November 2018, the Government, the Special Envoy and partners jointly endorsed the last stage of the Government’s National Plan to Eliminate Cholera by 2022. The Long-Term Plan includes coordinated efforts to reinforce national capacity in epidemiological surveillance, laboratory analysis, community health care and a long-term community alert and response system. The Plan foresees long-term capacity building of government rapid response teams, promotion of hygiene behavior and vaccination in cholera persistent areas.

The Long-Term Plan also clearly articulates investments required in priority communes to build up water, sanitation, waste treatment and health care system strengthening.



© Office of the UN Secretary-General’s Special Envoy for Haiti Rapid Response Team from MSPP, PAHO and partners

## OVERVIEW OF THE FUND OPERATIONS

As part of national efforts to improve water and sanitation coverage, the interventions will support Haiti on its path towards the Sustainable Development Goals as well as support efforts to reduce other water-borne diseases.

This achievement has been in part a result of support from MPTF partners UNICEF and PAHO/OMS in Track 1. MPTF supported UNICEF in strengthening the rapid response and community alert system, improving coordination, supporting hygiene communication and improved monitoring of chlorination of water systems. PAHO/OMS was supported in reinforcing the medical case management system to adequately treat suspected cholera cases and the epidemiological surveillance system to better respond rapidly to cholera alerts and notifications.

### Track 2

In April 2017, UNDP started implementing a pilot project in Mirebalais, the commune where cholera started in Haiti, as part of Track 2 of the Secretary-General's new approach. The project represents a concrete and tangible expression of the UN's regret for the suffering that the Haitian people have endured as a result of cholera.



New Mina Market - Crête Brulé in Mirebalais, November 15th 2018  
© Office of the UN Secretary-General's Special Envoy for Haiti

This project involved the development of a consultation methodology and the creation of local platforms comprised of victims of cholera from affected communities.

The platforms further engaged with the wider community of victims, identified community priorities, and worked with the UN to develop projects that respond to those priorities. Under this methodology, projects - with a construction envelope of \$150,000 per community - currently includes the rehabilitation of a water system in Gascogne and Sarazin, the installation of drinking water supply systems in three localities of Grand Boucan, the construction of the Mina Market in the section of Crête Brûlée and the development of a project in Mirebalais centre ville.



© UNDP Haiti - Construction drinking water supply system Sarazin

The implementation of the symbolic Track 2 project in Mirebalais provided important lessons that fed into the scale-up of this initiative in 2019. It was particularly important that the consultations were systematic and broadly inclusive, that they were seen as legitimate, victim-led, impartial and included follow-up dialogue with communities to discuss decisions made as a result of the consultations. Finally, it was also important that the consultations were conducted in a transparent and sensitive manner that allowed survivors to speak openly about their views.

In February 2019, the MPTF Advisory Committee approved scaling-up Track 2 to another 20 communities. The above key conditions underpin the planning and scale-up of Track 2 projects to be implemented in the communes of Cap-Haitien, Quartier-Morin, Limbé and Dondon, in the North Department of the country (see Fig.1 on the following page).

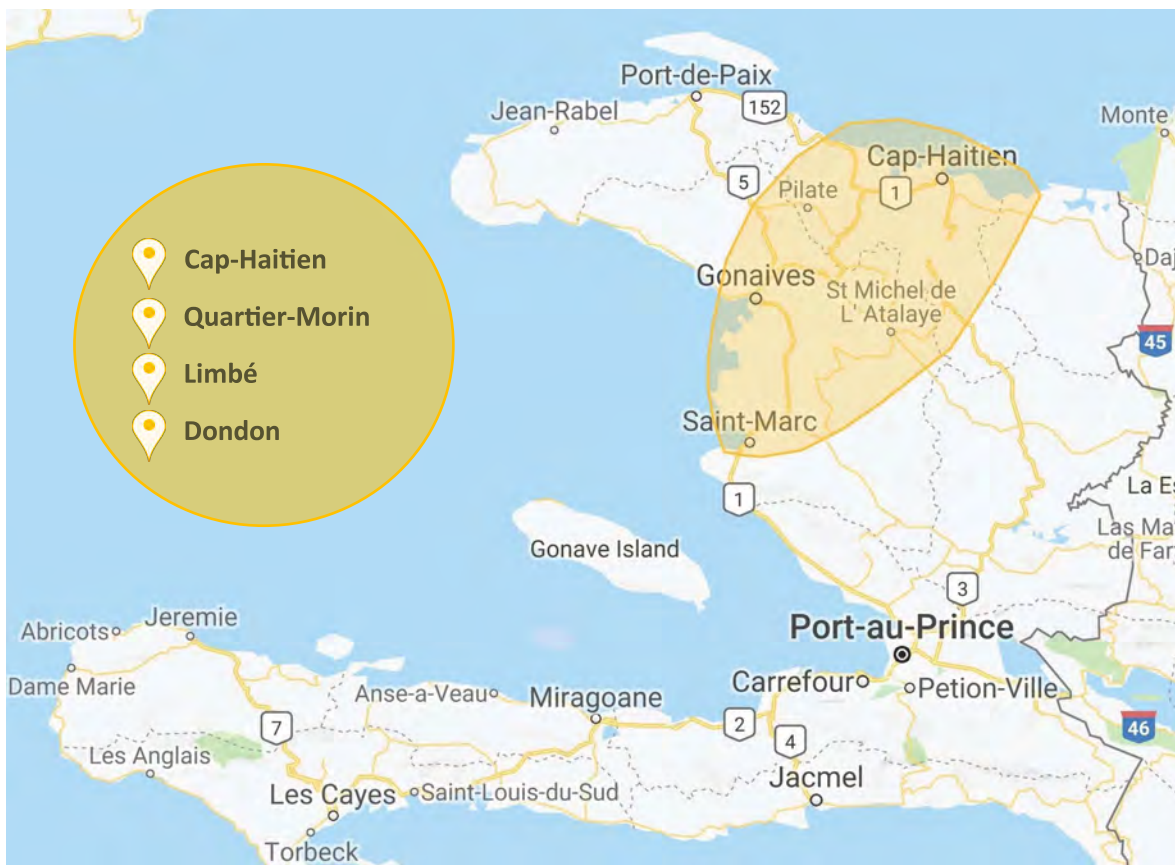
## OVERVIEW OF THE FUND OPERATIONS

The next phase of the Track 2 project will be implemented jointly by UNDP and UNOPS with the overall objective to expand local consultations and community assistance through providing material support to those Haitians and their communities most directly affected by cholera. This project has four main objectives: i) undertake local consultations in priority communes selected for Phase 2 with cholera victims and their families, affected communities, including local representatives, formal and informal leaders and vulnerable groups; ii) undertake participatory community

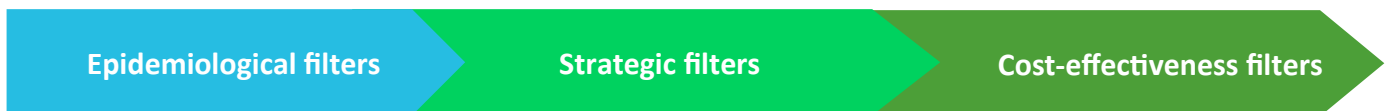
assessments, iii) implement the community projects, and (iv) ensure capacity development for sustainable community management of the projects.

In order to align with the Track 2 expansion, the MPTF fund has been extended for three more years, through December 2022, aligning it with the Government of Haiti’s Long-Term Plan. In addition, the MPTF Advisory Committee has changed the project progress reporting period from monthly to quarterly. Further to this decision, the Terms of Reference of the fund will be adjusted accordingly.

**Fig. 1. Selected geographical area after epidemiological and strategic screening ( Map data © Google)**



**Fig. 2. Layered system of communes’ prioritization**



As illustrated in Fig.2 above, prioritization of geographical areas resulted from applying several filters: the first filter identified communes highly impacted by cholera, the second filter sought a balance of rural,

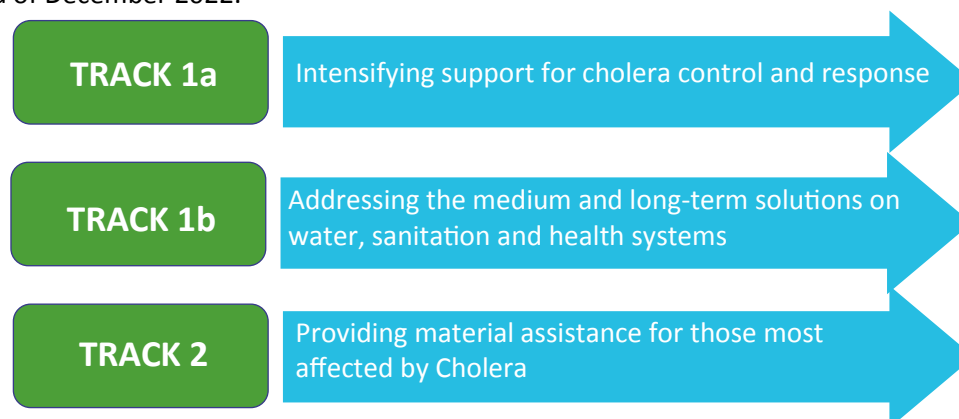
urban and peri-urban communities, and the third capitalized on geographic clustering and cost-effectiveness analysis.

# FUND FACTS AND INFOGRAPHICS



## FUND FACTS

The [UN Haiti Cholera Response MPTF](#), established in October 2016, supports transparent, low-cost allocation of donor resources to address the most critical needs in line with the two tracks of the new approach. The Fund's timeline was extended to align with the Government of Haiti's Long-Term Plan which aims to eliminate cholera in Haiti by the end of December 2022.



### GOVERNING BODIES

The **Governance Structure** is led by the UN Secretary-General's Special Envoy for Haiti and the Director of the Sustainable Development Unit of the Executive Office of the Secretary-General, who co-chair the MPTF's Advisory Committee.

The **Advisory Committee** also includes the DSRSG/HC/RC for Haiti, PAHO/WHO, UNICEF, UNDP, UNOPS (2019), OCHA, seven donors - Canada, Chile, France, Japan, Norway, Republic of Korea, the United Kingdom - and the Government of Haiti (observer).

The Fund is administered by the **Multi-Partner Trust Fund Office**, a UN hub in pooled financing, serving UN entities, national governments and non-governmental partners. MPTF Office Gateway (<http://mptf.undp.org>) reports on fund administration in real time.

### KEY FIGURES



**Contributions**  
Million

**\$9.7**

**Transfers\***  
Million

**\$4.5**

*\*In February 2019, an additional \$5.6 million was approved in two tranches for Track 2 of the community assistance in 4 cholera priority communes (Cap-Haitien area) as part of the new United Nations approach to*



**Recipient Organizations**

**4**

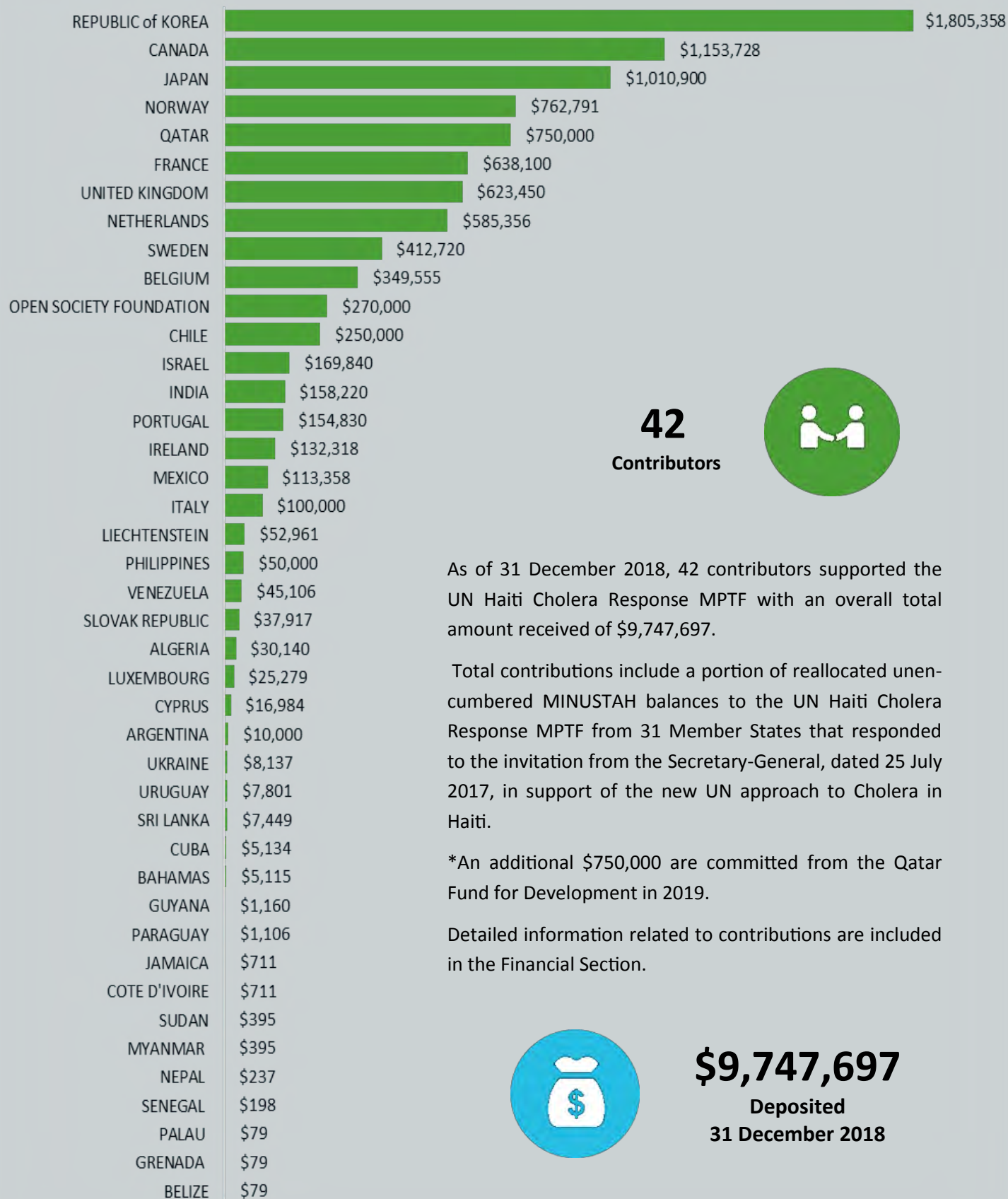
**Number of projects**

**5**

**Table 2. List of UN Haiti Cholera Response MPTF as of 31 Dec 2018**

SUMMARY OF THE 2018 PROJECTS	TRACK	UN Entity	Amount million
Haiti Cholera Medical Response	TRACK 1A	PAHO/WHO	\$1.5
Community assistance Mirebalais: New UN Approach cholera Haiti	TRACK 2	UNDP	\$1.2
Preventing and Cutting Transmission in four persistent departments	TRACK 1A	UNICEF	\$0.5
Preventing and cutting cholera transmission in Ouest Department	TRACK 1A	UNICEF	\$1.0
Operational and Technical Support to the OSE for a UN response to cholera in Haiti	GLOBAL SUPPORT	UN	\$0.3

## CONTRIBUTORS



**42**  
Contributors



As of 31 December 2018, 42 contributors supported the UN Haiti Cholera Response MPTF with an overall total amount received of \$9,747,697.

Total contributions include a portion of reallocated unencumbered MINUSTAH balances to the UN Haiti Cholera Response MPTF from 31 Member States that responded to the invitation from the Secretary-General, dated 25 July 2017, in support of the new UN approach to Cholera in Haiti.

\*An additional \$750,000 are committed from the Qatar Fund for Development in 2019.

Detailed information related to contributions are included in the Financial Section.



**\$9,747,697**  
Deposited  
31 December 2018



The Special Envoy Visit to Haiti November 2018  
© Office of the UN Secretary-General's Special Envoy for Haiti

## KEY ACHIEVEMENTS - TRACK 1a

### Intensifying support for cholera control and response



Net Transfer amount  
**\$1,500,000**



Recipient  
Organization



#### Project

#### Haiti Cholera Medical Response

End of Project Report [Link](#)

#### START DATE

1 Jun 2017

#### END DATE

31 Mar 2018

Implementing  
Partners  
MSPP  
French Red Cross

#### Activities and Results

**100%** % Cholera alerts received coordinated Rapid Medical Response

**59%**

National

**83%**

(Arbonite and  
Centre -reported  
65% of cases)

% of evaluated cholera treatment facilities scoring over 75% quality assurance

**94 functional CTDA's evaluated** between June 2017 and March 2018

**5 DHD (Departmental Health Directorates) staffed with assistant epidemiologists**

**12,000 Cary Blair transport medium for cholera samples** were purchased and transferred to Direction d'Epidemiologie de Laboratoire et de Recherche (DELR)

**4 lab-moto nurses** in three priority departments (Arbonite, Centre and West) to ensure Cary Blair supply, increasing sampling percentage among suspected cholera cases to 81% in March 2018

**85 Staff Deployed**

through French Red Cross including Doctors, Nurses, Auxiliaries, Hygienists and Others

In 2017, the MSPP (Ministry of Public Health and Population) supported by PAHO/WHO, created an inventory of all the CTDA's (Centres de Traitement des Diarrhées Aiguës) present in Haiti and evaluated their performance. Information collected provided an overview of the capacity of each CTDA to respond to cholera cases and recommended actions in order to improve standard quality of care to prevent deaths and transmission within the treatment center. As a result, interventions to improve medical case management were implemented by the French Red Cross and/or PAHO/WHO with positive evaluation score particularly in CTDA's with higher cholera transmission (Artibonite and Centre). Moving forward, it would prove to be useful to continue evaluations of these CTDA's to ensure that limited resources are being used strategically by identifying CTDA's that require support.

## KEY ACHIEVEMENTS - TRACK 1a

### Intensifying support for cholera control and response



Net Transfer amount  
**\$1,500,791**



Recipient  
Organization

unicef 

#### Project

### Preventing and cutting cholera transmission

#### Phase I - four persistent departments

End of Project Report [Link](#)

#### Phase II - West departments

2018 Annual Report [Link](#)

Phase II  
START DATE  
05 Apr 2018  
END DATE  
31 Mar 2019

#### Implementing Partners

MSPP—DINEPA  
DSO and NGOs



UNICEF Haiti works with its partners to support the rapid response strategy of the Ministry of Health to eliminate cholera with its mobile teams.

Here is the story of Michelange:

<https://bit.ly/2EEsZVM> Fanfan, Jean panel, "Lancement de l'opération coup de poing 2018 contre le choléra » 2018 : <https://bit.ly/2ETUE4W>

#### Activities and Results

#### Phase I - Completed

Four persistent departments: West, Centre, Arbonite, North

- 3** Departments with coordination alert-response reinforced
- 4** MoH Rapid Response Teams supported in the 4 departments
- 4** DINEPA chlorination agents supported in the West departments
- 3** Communication plans implemented

#### Phase II West departments

- 1** Departments with coordination alert-response reinforced
- 7** DINEPA staff supported within the National Cholera Coordination Cell
- 19** NGOs teams supporting MSPP rapid response teams in the West departments
- 2** Joint mobile DINEPA-NGO teams activated
- 24** Deployment weeks in other departments done by joint teams Including National EMO-EPAH and Rapid Response teams (no EMO-EPAH)

# KEY ACHIEVEMENTS - TRACK 2

## Assistance and support



**Net Transfer amount**  
**\$1,172,876**



**Recipient Organization**

*Empowered lives.  
Resilient nations.*

### Project

### Activities and Results

**Community Assistance Mirebalais**  
2018 Annual Report [Link](#)

**START DATE**  
15 Jun 2017

**END DATE**  
31 Dec 2018



- 1** Market constructed in Crête Brûlée  
120+ merchants selling their products
- 3** Water supply systems constructed in Gascogne, Sarazin and Grand Boucan
- 1** Road in Mirebalais centre ville
- 5** Community consultations

*A new joint programme on Track 2 was approved by the Advisory Committee while this report was being finalized. UNDP and UNOPS will be working together for the next couple of years to scale-up this community approach to an additional 20 communities in the North Department.*



© Office of the UN Secretary-General's Special Envoy for Haiti  
Cutting the ribbon Mina Market in the section of Crête Brûlée



© UNDP Haiti Community Consultation

The people directly involved in this initial project were the communities in Mirebalais, especially the individuals and families most affected by cholera. Their engagement and participation in the consultations, identification of priorities and implementation contributed to the success of this project. Cholera victims, and those indirectly impacted, had a new voice and leadership in this process. Women and men participated and were heard equally.

*"This is the first time that we feel heard. This is the first time we feel respected. Nothing can bring back those we lost, but this apology is accepted. It allows us to start a new chapter."*  
*The Mayor of Mirebalais*



New Mina Market in the section of Crête Brûlée  
© Office of the UN Secretary-General's Special Envoy for Haiti

## GLOBAL SUPPORT

Global strategic engagement in support of the new approach to cholera in Haiti and organizational learning



Net Transfer amount  
**\$ 337,300**



Recipient  
Organization



Project

Operational and Technical Support by the Office of the Special Envoy (OSE) to a UN response to cholera in Haiti

2018 Annual Report [Link](#)

START DATE

4 Apr 2018

END DATE

30 Jun 2019

Implementing  
Partner  
Office of the  
Special Envoy for  
Haiti

Activities to support  
efficient coordination and partnership

Full implementation of the UN new approach to reducing the transmission of cholera in Haiti

Launch of Track 2 activities for communities and victims of cholera

Launch feasibility study into innovative financing mechanisms in Haiti

Integrate cholera response and long-term WASH in the 2030 agenda

Technical support to the Government on the Long-Term Plan (2019-2022), aligned with the new UN approach, serving as roadmap to implement coordinated action required to finally eliminate cholera from Haiti

Official inauguration of a community market in Crête Brulée in the presence of the victims from the communities, the local government officials and the UN Representatives for Haiti



© Office of the UN Secretary-General's Special Envoy for Haiti

*"The Special Envoy for Haiti, Ambassador Josette Sheeran, during the inauguration of the Market constructed in Crête Brulée, talked about the meaningful and effective partnership built between the UN and the community resulted in a project chosen by the people, and a market that reflected the people's vision and needs. She added that it is essential that future partnerships be based on the listening and responding to the needs of the people and communities the UN endeavors to help."*

# 2018 FINANCIAL INFORMATION

for the period 1 January to 31 December 2018



## DEFINITIONS

### **Allocation**

Amount approved by the Advisory Committee for a project/programme.

### **Approved Project/Programme**

A project/programme including budget, etc., that is approved by the Advisory Committee for fund allocation purposes.

### **Contributor Commitment**

Amount(s) committed by a donor to a Fund in a signed Standard Administrative Arrangement with the UN Multi-Partner Trust Fund Office (MPTF Office), in its capacity as the Administrative Agent. A commitment may be paid or pending payment.

### **Contributor Deposit**

Cash deposit received by the MPTF Office for the Fund from a contributor in accordance with a signed Standard Administrative Arrangement.

### **Delivery Rate**

The percentage of funds that have been utilized, calculated by comparing expenditures reported by a Recipient Organization against the 'net funded amount'.

### **Indirect Support Costs**

A general cost that cannot be directly related to any particular programme or activity of the Recipient Organizations. UNDG policy establishes a fixed indirect cost rate of 7% of programmable costs.

### **Net Funded Amount**

Amount transferred to a Recipient Organization less any refunds transferred back to the MPTF Office by a Recipient Organization.

### **Recipient Organization**

A UN Organization or other inter-governmental Organization that is an implementing partner in a Fund, as represented by signing a Memorandum of Understanding (MOU) with the MPTF Office for a particular Fund.

### **Project Expenditure**

The sum of expenses and/or expenditure reported by all Recipient Organizations for a Fund irrespective of which basis of accounting each Recipient Organization follows for donor reporting.

### **Project Financial Closure**

A project or programme is considered financially closed when all financial obligations of an operationally completed project or programme have been settled, and no further financial charges may be incurred.

### **Project Operational Closure**

A project or programme is considered operationally closed when all programmatic activities for which Recipient Organization(s) received funding have been completed.

### **Project Start Date**

Date of transfer of first instalment from the MPTF Office to the Recipient Organization.

### **Total Approved Budget**

This represents the cumulative amount of allocations approved by the Advisory Committee.

### **US Dollar Amount**

The financial data in the report is recorded in US Dollars and due to rounding off of numbers, the totals may not add up.

## INTRODUCTION

This Consolidated Annual Financial Report of the UN Haiti Cholera Response MPTF is prepared by the UN Multi-Partner Trust Fund Office (MPTF Office) in fulfillment of its obligations as Administrative Agent, as per the Terms of Reference (TOR), the Memorandum of Understanding (MOU) signed between the UN MPTF Office and the Recipient Organizations, and the Standard Administrative Arrangement (SAA) signed with contributors.

The MPTF Office, as Administrative Agent, is responsible for concluding an MOU with Recipient Organizations and SAAs with contributors. It receives, administers and manages contributions, and disburses these funds to the Recipient Organizations.

The Administrative Agent prepares and submits annual consolidated financial reports, as well as regular financial statements, for transmission to contributors.

This consolidated financial report covers the period 1 January to 31 December 2018 and provides financial data on progress made in the implementation of projects of the UN Haiti Cholera Response MPTF Fund. It is posted on the MPTF Office GATEWAY (<http://mptf.undp.org/factsheet/fund/CLH00>).

The financial data in the report is recorded in US Dollars and due to rounding off of numbers, the totals may not add up.

## 2018 FINANCIAL PERFORMANCE

This chapter presents financial data and analysis of the UN Haiti Cholera Response MPTF Fund using the pass-through funding modality as of 31 December 2018. Financial information for this Fund is also available on the MPTF Office GATEWAY, at the following address:

<http://mptf.undp.org/factsheet/fund/CLH00>.

### 1. SOURCES AND USES OF FUNDS

As of 31 December 2018, 42 contributors deposited US\$ 9,747,697 in contributions and US\$ 115,397 was earned in interest.

The cumulative source of funds was US\$ 9,863,095.

Of this amount, US\$ 4,510,967 has been net funded to 4 Recipient Organizations, of which US\$ 2,622,770 has been reported as expenditure. The Administrative Agent fee has been charged at the approved rate of 1% on deposits and amounts to US\$ 97,477. Table 1 provides an overview of the overall sources, uses, and balance of the UN Haiti Cholera Response MPTF Fund as of 31 December 2018.

**Table 1. Financial Overview, as of 31 December 2018 (in US Dollars)**

	Annual 2017	Annual 2018	Cumulative
<b>Sources of Funds</b>			
Contributions from donors	6,944,982	2,164,615	9,747,697
Fund Earned Interest and Investment Income	19,974	95,031	115,397
Interest Income received from Recipient Organizations	-	-	-
Refunds by Administrative Agent to Contributors	-	-	-
Fund balance transferred to another MDTF	-	-	-
Other Income	-	-	-
<b>Total: Sources of Funds</b>	<b>6,964,956</b>	<b>2,259,646</b>	<b>9,863,095</b>
<b>Use of Funds</b>			
Transfers to Recipient Organizations	2,500,000	2,010,967	4,510,967
Refunds received from Recipient Organizations	-	-	-
<b>Net Funded Amount</b>	<b>2,500,000</b>	<b>2,010,967</b>	<b>4,510,967</b>
Administrative Agent Fees	69,450	21,646	97,477
Direct Costs: (Advisory Committee, Secretariat...etc.)	-	-	-
Bank Charges	89	302	397
Other Expenditures	-	-	-
<b>Total: Uses of Funds</b>	<b>2,569,539</b>	<b>2,032,915</b>	<b>4,608,841</b>
<b>Change in Fund cash balance with Administrative Agent</b>	<b>4,395,417</b>	<b>226,731</b>	<b>5,254,253</b>
Opening Fund balance (1 January)	632,105	5,027,522	-
<b>Closing Fund balance (31 December)</b>	<b>5,027,522</b>	<b>5,254,253</b>	<b>5,254,253</b>
Net Funded Amount (Includes Direct Cost)	2,500,000	2,010,967	4,510,967
Recipient Organizations' Expenditure (Includes Direct Cost)	1,216,314	1,406,455	2,622,770
<b>Balance of Funds with Recipient Organizations</b>			<b>1,888,198</b>

## 2. PARTNER CONTRIBUTIONS

Table 2 provides information on cumulative contributions received from all contributors to this Fund as of 31 December 2018.

The UN Haiti Cholera Response MPTF Fund is currently being financed by 42 contributors, as listed in the table below.

The table below includes commitments made up to 31 December 2018 through signed Standard Administrative Agreements, and deposits made through 2018. It does not include commitments that were made to the fund beyond 2018.

**Table 2. Contributors' Commitments and Deposits, as of 31 December 2018 (in US Dollars)**

Contributors	Total Commitments	Prior Years as of 31-Dec-2017 Deposits	Current Year Jan-Dec-2018 Deposits	Total Deposits
ALGERIA	30,140	30,140	-	30,140
ARGENTINA	10,000	10,000	-	10,000
BAHAMAS	5,115	5,115	-	5,115
BELGIUM	349,555	349,555	-	349,555
BELIZE	79	79	-	79
CANADA	1,153,728	1,153,728	-	1,153,728
CHILE	250,000	250,000	-	250,000
COTE D'IVOIRE	711	711	-	711
CUBA	5,134	5,134	-	5,134
CYPRUS	16,984	16,984	-	16,984
FRANCE	638,100	638,100	-	638,100
GRENADA	79	79	-	79
GUYANA	1,160	158	1,002	1,160
INDIA	158,220	158,220	-	158,220
IRELAND	132,318	-	132,318	132,318
ISRAEL	169,840	169,840	-	169,840
ITALY	100,000	100,000	-	100,000
JAMAICA	711	711	-	711
JAPAN	1,010,900	-	1,010,900	1,010,900
LIECHTENSTEIN	52,961	52,961	-	52,961
LUXEMBOURG	25,279	25,279	-	25,279
MEXICO	113,358	113,358	-	113,358
MYANMAR	395	395	-	395
NEPAL	237	237	-	237
NETHERLANDS	585,356	585,356	-	585,356
NORWAY	762,791	762,791	-	762,791
OPEN SOCIETY FOUNDATION	270,000	-	270,000	270,000
PALAU	79	79	-	79
PARAGUAY	1,106	1,106	-	1,106
PHILIPPINES	50,000	50,000	-	50,000
PORTUGAL	154,830	154,830	-	154,830
QATAR	750,000	-	750,000	750,000

REPUBLIC of KOREA	1,805,358	1,805,358	-	1,805,358
SENEGAL	198	198	-	198
SLOVAK REPUBLIC	37,917	37,917	-	37,917
SRI LANKA	7,449	7,449	-	7,449
SUDAN	395	-	395	395
SWEDEN	412,720	412,720	-	412,720
UKRAINE	8,137	8,137	-	8,137
UNITED KINGDOM	623,450	623,450	-	623,450
URUGUAY	7,801	7,801	-	7,801
VENEZUELA	45,106	45,106	-	45,106
<b>Grand Total</b>	<b>9,747,697</b>	<b>7,583,082</b>	<b>2,164,615</b>	<b>9,747,697</b>

### 3. INTEREST EARNED

Interest income is earned in two ways: 1) on the balance of funds held by the Administrative Agent (Fund earned interest), and 2) on the balance of funds held by the Recipient Organizations (Agency earned interest) where their Financial Regulations and Rules allow return of interest to the AA.

As of 31 December 2018, Fund earned interest amounts to US\$ 115,397.

Details are provided in the table below.

**Table 3. Sources of Interest and Investment Income, as of 31 December 2018 (in US Dollars)**

Interest Earned	Prior Years as of 31-Dec-2017	Current Year Jan-Dec-2018	Total
<b>Administrative Agent</b>			
Fund Earned Interest and Investment Income	20,366	95,031	115,397
<b>Total: Fund Earned Interest</b>	<b>20,366</b>	<b>95,031</b>	<b>115,397</b>
<b>Recipient Organization</b>			
<b>Total: Agency earned interest</b>			
<b>Grand Total</b>	<b>20,366</b>	<b>95,031</b>	<b>115,397</b>

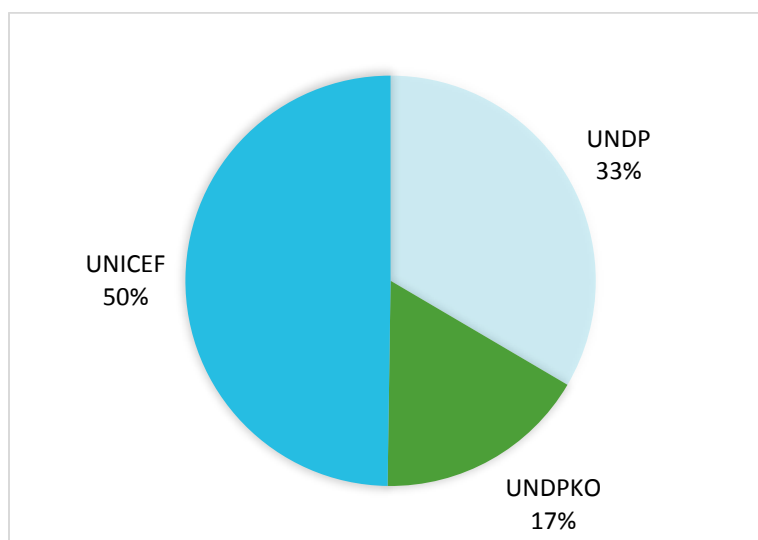
#### 4. TRANSFER OF FUNDS

Allocations to Recipient Organizations are approved by the Co-Chairs in consultation with the Advisory Committee and disbursed by the Administrative Agent. As of 31 December 2018, the AA has transferred US\$ 4,510,967 to 4 Recipient Organizations (see list below).

**Table 4. Transfer, Refund, and Net Funded Amount by Recipient Organization, as of 31 December 2018 (in US Dollars)**

Recipient Organization	Prior Years as of 31-Dec-2017			Current Year Jan-Dec-2018			Total		
	Transfers	Refunds	Net Funded	Transfers	Refunds	Net Funded	Transfers	Refunds	Net Funded
PAHO/WHO	1,500,000		1,500,000				1,500,000		1,500,000
UNDP	500,000		500,000	672,876		672,876	1,172,876		1,172,876
UNDPKO				337,300		337,300	337,300		337,300
UNICEF	500,000		500,000	1,000,791		1,000,791	1,500,791		1,500,791
<b>Grand Total</b>	<b>2,500,000</b>		<b>2,500,000</b>	<b>2,010,967</b>		<b>2,010,967</b>	<b>4,510,967</b>		<b>4,510,967</b>

**Figure 2: Transfers amount by Recipient Organization for the period of 1 January to 31 December 2018**



## 5. EXPENDITURE AND FINANCIAL DELIVERY RATES

All final expenditures reported for the year 2018 were submitted by the Headquarters of the Recipient Organizations. These were consolidated by the MPTF Office.

Project expenditures are incurred and monitored by each Recipient Organization and are reported as per the agreed upon categories for inter-agency harmonized reporting. The reported expenditures were submitted via the MPTF Office's online expenditure reporting tool. The 2018 expenditure data has been posted on the MPTF Office GATEWAY at <http://mptf.undp.org/factsheet/fund/CLH00>.

### 5.1 EXPENDITURE REPORTED BY RECIPIENT ORGANIZATION

In 2018, US\$ 2,010,967 was net funded to Recipient Organizations, and US\$ 1,406,455 was reported in expenditure.

As shown in table below, the cumulative net funded amount is US\$ 4,510,967 and cumulative expenditures reported by the Recipient Organizations amount to US\$ 2,622,770. This equates to an overall Fund expenditure delivery rate of 58 percent.

The agencies with the three highest delivery rates are: UNICEF (75%), UNDP (59%) and PAHO/WHO (46%)

**Table 5.1 Net Funded Amount, Reported Expenditure, and Financial Delivery by Recipient Organization, as of 31 December 2018 (in US Dollars)**

Recipient Organization	Approved Amount	Net Funded Amount	Expenditure			Delivery Rate %
			Prior Years as of 31-Dec-2017	Current Year Jan-Dec-2018	Cumulative	
PAHO/WHO	1,500,000	1,500,000	653,172	34,944	688,116	45.87
UNDP	1,172,876	1,172,876	75,921	614,070	689,991	58.83
UNDPKO	337,300	337,300		124,226	124,226	36.83
UNICEF	1,500,791	1,500,791	487,221	633,215	1,120,436	74.66
<b>Grand Total</b>	<b>4,510,967</b>	<b>4,510,967</b>	<b>1,216,314</b>	<b>1,406,455</b>	<b>2,622,770</b>	<b>58.14</b>

### 5.2 EXPENDITURE BY PROJECT

Table 5.2 displays the net funded amounts, expenditures reported and the financial delivery rates by Recipient Organizations.

**Table 5.2 Expenditure by Project within Sector, as of 31 December 2018 (in US Dollars)**

Sector / Project No. and Project Title		Recipient Organization	Project Status	Total Approved Amount	Net Funded Amount	Total Expenditure	Delivery Rate %
<b>1a Prevent &amp; Cut Transmission</b>							
00105773	#1 HAITI CHOLERA MEDICAL RESPO	PAHO/WHO	On Going	1,500,000	1,500,000	688,116	45.87
00109989	#4 PREVENTING AND CUTTING	UNICEF	On Going	1,000,791	1,000,791	676,924	67.64
00105774	#3 PREVENTING & CUTTING TRANSM	UNICEF	Operationally Closed	500,000	500,000	443,512	88.70
<b>1a Prevent &amp; Cut Transmission: Total</b>				<b>3,000,791</b>	<b>3,000,791</b>	<b>1,808,553</b>	<b>60.27</b>
<b>2 Support to Affected</b>							
00105932	#2 COMMUNITY ASSIST. MIRABALAIS	UNDP	On Going	1,172,876	1,172,876	689,991	58.83
<b>2 Support to Affected: Total</b>				<b>1,172,876</b>	<b>1,172,876</b>	<b>689,991</b>	<b>58.83</b>

Global Support							
00109990	#5 Operational and Technical	UNDPKO	On Going	337,300	337,300	124,226	36.83
<b>Global Support: Total</b>				<b>337,300</b>	<b>337,300</b>	<b>124,226</b>	<b>36.83</b>
<b>Grand Total</b>				<b>4,510,967</b>	<b>4,510,967</b>	<b>2,622,770</b>	<b>58.14</b>

### 5.3 EXPENDITURE REPORTED BY CATEGORY

Project expenditures are incurred and monitored by each Recipient Organization and are reported as per the agreed categories for inter-agency harmonized reporting. Table 5.3 reflects expenditures reported in the UNDG expense categories.

#### 2012 CEB Expense Categories

1. Staff and personnel costs
2. Supplies, commodities and materials
3. Equipment, vehicles, furniture and depreciation
4. Contractual services
5. Travel
6. Transfers and grants
7. General operating expenses
8. Indirect costs

**Table 5.3 Expenditure by UNDG Budget Category, as of 31 December 2018 (in US Dollars)**

Category	Expenditure			Percentage of Total Programme Cost
	Prior Years as of 31-Dec-2017	Current Year Jan-Dec-2018	Total	
Staff & Personnel Cost	242,784	120,679	363,462	14.83
Suppl, Comm, Materials	107,283	10,271	117,553	4.80
Equipment, Vehicles, Furniture, Depreciation	37,642	354,959	392,602	16.02
Contractual Services	74,285	154,012	228,297	9.31
Travel	110,700	43,566	154,266	6.29
Transfers and Grants	528,105	575,787	1,103,892	45.04
General Operating	35,939	55,021	90,961	3.71
<b>Programme Costs Total</b>	<b>1,136,737</b>	<b>1,314,295</b>	<b>2,451,033</b>	<b>100.00</b>
<sup>1</sup> Indirect Support Costs Total	79,577	92,160	171,737	7.01
<b>Total</b>	<b>1,216,314</b>	<b>1,406,455</b>	<b>2,622,770</b>	

<sup>1</sup> **Indirect Support Costs** charged by Recipient Organization, based on their financial regulations, can be deducted upfront or at a later stage during implementation. The percentage may therefore appear to exceed the 7% agreed-upon for on-going projects. Once projects are financially closed, this number is not to exceed 7%.

## 6. COST RECOVERY

Cost recovery policies for the Fund are guided by the applicable provisions of the Terms of Reference, the MOU concluded between the Administrative Agent and Recipient Organizations, and the SAAs concluded between the Administrative Agent and Contributors, based on rates approved by UNDG.

The policies in place, as of 31 December 2018, were as follows:

- **The Administrative Agent (AA) fee:** 1% is charged at the time of contributor deposit and covers services provided on that contribution for the entire duration of the Fund. In the reporting period US\$ 21,646 was deducted in AA-fees. Cumulatively, as of 31 December 2018, US\$ 97,477 has been charged in AA-fees.
- **Indirect Costs:** Recipient Organizations may charge 7% indirect costs. In the current reporting period US\$ 92,160 was deducted in indirect costs by Recipient Organizations. Cumulatively, indirect costs amount to US\$ 171,737 as of 31 December 2018.

## 7. ACCOUNTABILITY AND TRANSPARENCY

In order to effectively provide fund administration services and facilitate monitoring and reporting to the UN system and its partners, the MPTF Office has developed a public website, the MPTF Office Gateway (<http://mptf.undp.org>). Refreshed in real time every two hours from an internal enterprise resource planning system, the MPTF Office Gateway has become a standard setter for providing transparent and accountable trust fund administration services.

The Gateway provides financial information including: contributor commitments and deposits, approved programme budgets, transfers to and expenditures reported by Recipient Organizations, interest income and other expenses. In addition, the Gateway provides an overview of the MPTF Office portfolio and extensive information on individual Funds, including their purpose, governance structure and key documents. By providing easy access to the growing number of narrative and financial reports, as well as related project documents, the Gateway collects and preserves important institutional knowledge and facilitates knowledge sharing and management among UN Organizations and their development partners, thereby contributing to UN coherence and development effectiveness.

## Acknowledgments

This report was prepared by the Office of the Special Envoy for Haiti and the Office of the Director of the Sustainable Development Unit of the Executive Office of the Secretary-General with the support of the UN MPTF Office Annual Reporting Team . The information included in the infographics for the two Tracks and the Global Support sections were provided by the Recipient UN Organizations.

Cover Photo: Child drinking water in Grande Anse Department, Haiti  
Credit: ©UNICEF-Haiti/2017/Bradley  
Layout Designer: UN MPTF Office Reporting Team



Office of the UN Secretary-General's Special Envoy for Haiti and  
UN Multi-Partner Trust Fund Office  
<http://mpf.undp.org/cholera>