

Liberia Peace building Fund
QUARTERLY STATUS REPORT AS OF 30/06/09

Recipient UN Organization:	UNDP	PBF Priority Area:	Critical interventions to promote peace and resolve conflict – Area 2		
Implementing Partner(s):	Landmine Action				
Project Number:	PBF/ Chrono Ref: 006				
Project Title:	Tumutu Agricultural Training Programme				
Total Approved Project Budget	\$1,123,500				
Funds Committed:	\$736,019.01	Percentage of Approved:	65%		
Funds Disbursed:	\$832,233.76	Percentage of Approved:	74%		
SC Approval Date:	13/08/08				
Expected Project Duration:	18 Months	Forecast Final Date:	03/10	Delay (Months):	0

Outputs:	Progress:	Percentage of planned:
Course II Graduated	368 students graduated on 17 th April 2009	100%
Course II reintegration planning complete and final reintegration materials provided	368 students had their individual reintegration plans formulated	100%
Course II reintegration planning complete and final reintegration materials procured	Completed, all procurement undertaken following UNDP procurement rules	100%
Course II beneficiaries relocated to chosen communities	Completed	100%
Training centre prepared for Course III	On-going	33%
Course III Equipment purchased	Not started	0%
Transition planning	On-going	30%

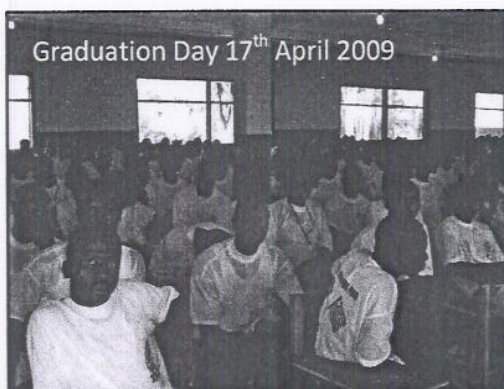
landmine action

Tumutu Agricultural Training Project (TATP)

Course II Second Quarter (April – June 2009) Report

This report covers the period from April to June 2009. The second course of TATP training started on the 10th of November 2008 with an enrolment of 400 (364 male and 36 female), mostly ex-combatant from Bomi, Grand Cape Mount, Lofa and Bong counties of Liberia.

368 Students successfully completed the course, (335 male and 33 female) and graduated on 17th April 2009



Curriculum administration and individual subject reviews were covered in detail in the previous report (January – March 2009), so this report will focus on the reintegration of the graduates to their selected communities

Reintegration

The reintegration phase of Course II commenced on Saturday 18th April and all graduates had been returned to their selected communities by Sunday 26th April. This was an exceptional achievement that was as a direct result of the hard work of LMA field staff, drivers and supervisors who worked tirelessly and without a break over the 8 days. Annex 1 details the County, District and Town of return for the 368 graduates.

The reintegration phase is divided into two key stages;

1. Pre-graduation; Trainees' reintegration interviews were conducted in February to establish the students post graduation aspirations mainly on their interest to choose among six types of agricultural reintegration and preferred community of relocation. Using this information, the LMA mobile field teams visited all of the recipient communities in question to 'prepare the ground' for the trainees return and to discuss the availability of suitable agricultural land. As

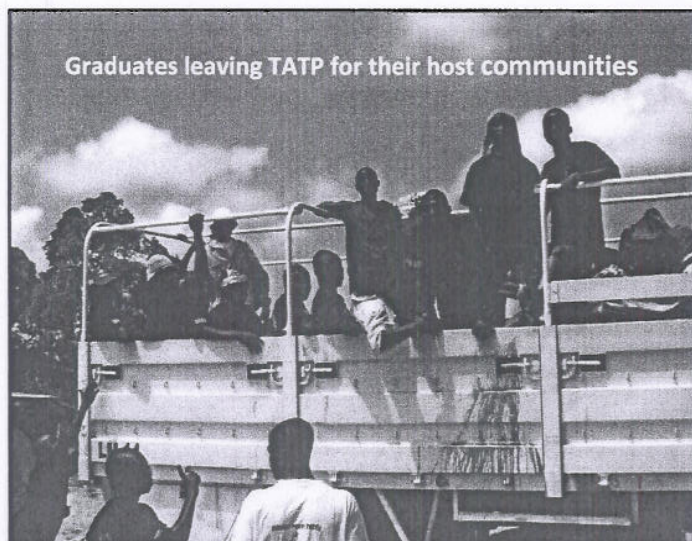
detailed in the previous report the community response was overwhelmingly positive with a 100% acceptance of the return

As a result of lessons learnt exercise undertaken following Course I, where it was evident that the method selected for provision of reintegration packages caused considerable difficulties¹, standardised reintegration packages were provided to students. The standardisation of packages ensured that all graduates had the same change of success as they receive all of the items necessary to be successful regardless of their selection. The composition of the standardised packages is included as Annex 2.

The following table documents total number of students by activity and includes a breakdown of collectives and individuals

Reintegration Package	Total Number of Students	Number of Collectives
Vegetable	278	2 collectives of 2 graduates 1 collective of 6 graduates
Rubber	13	
Rice	5	
Rabbits	27	
Poultry	33	
Pigs	12	4 collectives of 3 graduates
TOTAL	368	

Phase One Reintegration



Phase one reintegration was commenced on 18th April 2009 and was completed in 8 days as previously noted.

Graduates were reinserted into 9 Counties of Liberia including Bomi, Bong, Cape Mount, Gbarpolu, Lofa, Margibi, Montserrado, Sinoe and Maryland.

On leaving the TATP site, each graduate was given the first batch of their reintegration package as agreed in their individual reintegration plans. Each graduate also signed a contract with Landmine Action agreeing to

¹ Landmine Action (2009) Report on Implementation of Tumutu Agricultural Training Project in Liberia: Course 1 p52

undertake various preparation works on their new farms prior to receiving their Phase Two reintegration package. The phase 1 reintegration packages were designed to enable the graduates to start off their small-holdings efficiently and effectively

Phase Two Reintegration

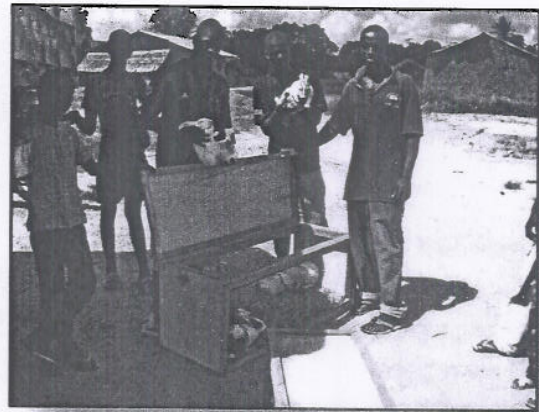
Delivery of the Phase Two reintegration packages commenced on 8th June 2009. Handover of the second phase package is dependent on the graduates demonstrating that they have achieved all their jointly agreed targets outlined in their student contracts which were signed before leaving TATP.

The targets are individually tailored to students/collectives, dependent on their reintegration packages and included but were not limited to;

- a) Land assigned being brushed and cleared or a significant start made to the task
- b) Nursery beds prepared
- c) Animal housing constructed
- d) Graduates remain in possession of all farming implements provided to them in phase 1 and;
- e) There are no reports of the graduates causing problems in the host community

To date 313 graduates have received their batch II packages and a total of 55 graduates are awaiting delivery. This includes a total of all 33 who are awaiting delivery of their batch II poultry which has been delayed due to difficulties sourcing a reliable and healthy supply of day old chicks

Below is a selection of pictures of graduates receiving their Batch II deliveries;



Phase II delivery is anticipated to be completed by 10th July 2009